



SAOPĆENJE FIRST RELEASE



Molimo korisnike da prilikom upotrebe podataka obavezno navedu izvor
Users are kindly requested to mention the data source

GODINA / YEAR VIII

SARAJEVO, 13.03. 2020.

BROJ / NUMBER 1A

POSLOVNE STATISTIKE / BUSINESS STATISTICS

MJESEČNI INDEKSI INDUSTRIJSKE PROIZVODNJE ZA BOSNU I HERCEGOVINU JANUAR 2019 - JANUAR 2020 – KONAČNI REZULTATI MONTHLY INDICES OF INDUSTRIAL PRODUCTION FOR BOSNIA AND HERZEGOVINA JANUARY 2019 – JANUARY 2020 – FINAL RESULT

Agencija za statistiku BiH, pored redovnog mjesečnog saopćenja o indeksu fizičkog obima industrijske proizvodnje, počela je redovno objavljivanje serije mjesečnih indeksa koji obuhvataju trinaest posljednjih mjeseci obračunatih prema baznoj, 2015. godini.

Rezultati indeksa industrijske proizvodnje prikazuju se u četiri oblika:

- Izvorni indeksi obima industrijske proizvodnje
- Desezonirani indeksi obima industrijske proizvodnje
- Kalendarski prilagođeni indeksi obima industrijske proizvodnje
- Trend serija indeksa obima industrijske proizvodnje

Prikazane serije obuhvataju izvještajni mjesec tekuće godine i dvanaest mjeseci koji mu prethode, uvijek uključujući isti mjesec prethodne godine.

Agency for Statistics of BiH, next to regular monthly release on the volume index of industrial production, started with the regular publication of monthly series covering the last thirteen months calculated according to the base, 2015th year.

Results of the indices of industrial production are presented in four forms:

- Gross indices of industrial production
- Seasonally adjusted indices of industrial production
- Working-day adjusted indices of industrial production
- Trend series of industrial production indices

Presented series include the reporting month of the current year and the twelve months preceding it, always including the same month last year.

Grafik 1. Mjesečna serija indeksa industrija ukupno - izvorni, kalendarski i sezonski prilagođeni indeksi: januar 2019 - januar 2020 (2015=100)
Graph 1. Monthly series of industrial indices for total - Gross, Working-day and Seasonally Adjusted indices: January 2019 - January 2020 (2015=100)

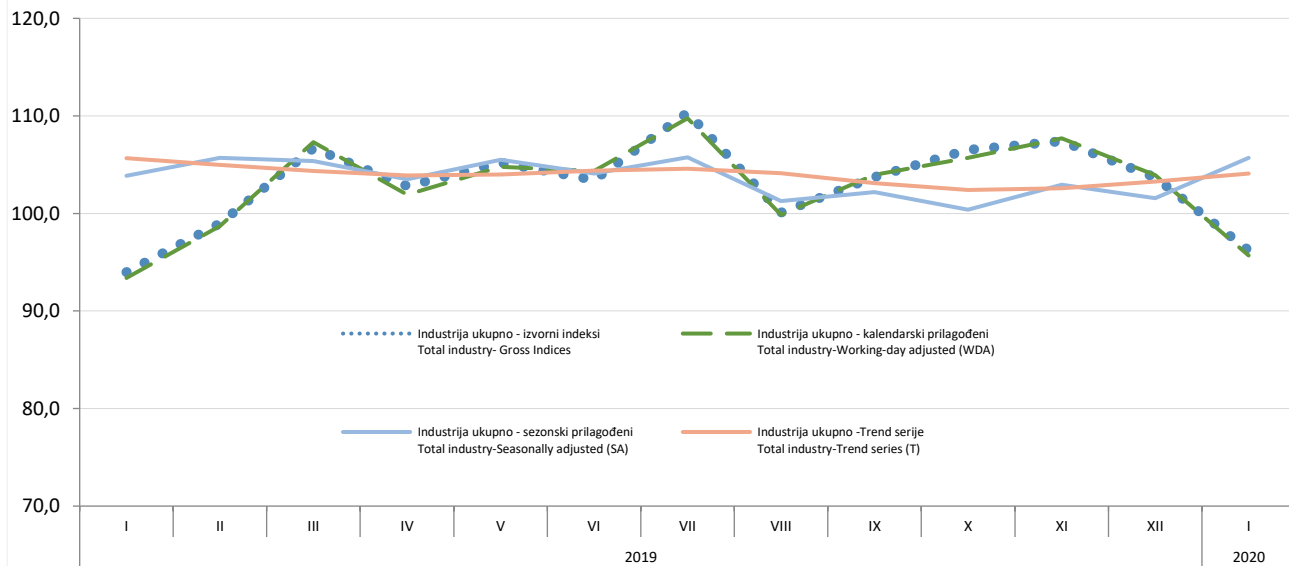


TABELA 1. MJESEČNA SERIJA INDEKSA INDUSTRIJSKE PROIZVODNJE - IZVORNI INDEKSI
TABLE 1. MONTHLY SERIES OF INDUSTRIAL PRODUCTION INDICES - GROSS INDICES

ϕ 2015 = 100

KD BiH 2010: GIG, Područja i Oblasti	IZVORNI INDEKSI / Gross indices													NACE Rev. 2: MIGs, Sections and Divisions
	I/19	II/19	III/19	IV/19	V/19	VI/19	VII/19	VIII/19	IX/19	X/19	XI/19	XII/19	I/20	
Ukupno	94.0	99.0	106.7	102.8	105.2	103.4	110.3	100.1	103.7	106.5	107.4	103.7	96.2	Total
AI	80.9	94.8	104.9	108.6	109.6	106.6	113.5	100.6	108.3	111.6	104.1	90.4	84.0	AI
AE	106.9	103.2	105.1	85.8	93.0	94.0	102.1	101.0	90.4	90.7	108.3	120.3	117.5	AE
BB	98.8	107.3	122.0	110.7	114.7	119.9	114.4	99.9	117.4	121.1	111.0	97.9	92.3	BB
CD	113.1	104.6	106.6	128.1	113.9	99.6	97.9	87.0	102.8	98.2	106.0	93.0	91.3	CD
CN	90.6	94.8	104.6	109.2	109.2	104.5	116.8	100.6	108.5	114.6	109.6	105.3	87.2	CN
Područje B	81.8	97.3	108.1	97.8	99.2	108.2	115.1	114.4	110.5	109.4	119.0	109.4	92.7	Section B
05	104.6	105.2	114.6	94.0	97.3	105.7	111.6	105.4	101.9	105.9	121.9	123.2	112.7	05
07	19.6	74.8	81.4	82.1	88.0	102.0	111.4	129.2	116.3	92.1	97.6	65.7	18.0	07
08	54.2	78.0	103.1	133.6	115.8	116.1	123.4	119.4	131.0	145.2	122.9	93.7	90.7	08
Područje C	89.3	95.4	105.3	107.7	107.7	104.1	110.1	95.1	105.2	109.7	103.6	94.9	86.2	Section C
10	92.9	95.3	105.3	112.6	114.7	98.4	118.4	114.6	112.4	113.0	108.8	113.1	94.9	10
11	78.9	67.6	105.6	119.3	109.6	118.8	132.1	130.1	110.9	101.3	96.7	114.3	54.9	11
12	55.0	49.8	19.6	24.0	19.0	19.3	19.0	22.8	16.5	13.1	15.0	120.5	8.1	12
13	72.9	69.7	67.7	63.8	74.6	62.0	57.2	55.4	59.0	67.1	59.1	66.5	76.8	13
14	106.1	114.5	107.9	123.7	115.9	115.1	119.5	79.7	131.7	128.2	123.3	109.1	94.9	14
15	92.4	94.0	90.1	81.5	88.6	92.2	99.3	69.6	93.6	97.2	91.9	78.1	82.0	15
16	60.4	75.6	87.7	85.8	91.6	82.6	93.6	86.1	95.9	103.1	92.2	78.7	70.9	16
17	82.0	104.2	68.4	98.8	105.2	100.1	108.6	61.8	104.4	103.8	91.6	94.8	101.8	17
18	86.1	95.7	119.1	108.8	118.8	97.7	94.6	149.5	129.6	129.2	123.9	109.6	97.2	18
19	34.8	33.3	38.2	45.7	36.1	32.1	32.6	30.2	32.1	31.5	30.1	31.7	30.7	19
20	103.0	99.4	109.7	104.6	108.7	107.4	121.2	104.2	104.2	112.0	106.8	101.9	100.6	20
21	72.0	99.4	127.2	118.1	114.0	131.2	153.4	68.0	96.4	199.0	186.0	93.7	92.8	21
22	115.4	125.9	139.1	144.8	144.7	139.1	158.6	131.2	151.4	159.7	152.2	126.8	119.7	22
23	44.4	66.8	106.4	111.7	107.8	101.9	108.0	108.2	109.1	126.3	108.6	84.9	58.8	23
24	104.6	99.5	108.4	108.5	108.9	93.1	84.3	80.5	71.6	69.2	75.2	65.9	74.2	24
25	94.0	108.5	121.0	107.2	120.3	123.8	127.6	109.2	120.5	124.9	108.9	106.0	96.2	25
26	309.1	269.4	335.2	337.8	286.7	276.1	294.9	260.4	405.3	453.5	361.2	482.0	304.4	26
27	107.0	120.7	120.0	131.9	122.8	118.4	127.9	107.9	123.9	124.5	129.4	103.9	109.3	27
28	122.6	113.2	134.9	132.9	122.6	151.4	132.8	109.2	134.1	126.5	124.3	98.0	105.8	28
29	100.3	108.6	119.7	113.9	100.5	112.4	91.3	73.7	102.7	105.6	106.1	65.2	88.6	29
30	56.1	80.6	86.8	89.2	91.1	79.6	79.2	67.3	67.4	70.3	73.0	75.8	47.0	30
31	114.7	106.4	109.5	131.1	115.7	101.4	99.4	87.8	103.2	97.9	106.9	94.0	92.7	31
32	123.7	182.1	197.9	225.3	211.9	204.5	246.1	160.1	143.6	136.9	147.3	235.2	117.6	32
33	103.3	108.1	93.7	96.8	86.2	91.3	102.4	93.8	108.9	112.3	97.2	105.1	90.5	33
Područje D	118.0	112.5	110.7	87.9	99.3	98.0	108.1	109.4	94.1	93.0	114.0	132.0	131.2	Section D
35	118.0	112.5	110.7	87.9	99.3	98.0	108.1	109.4	94.1	93.0	114.0	132.0	131.2	35

TABELA 2. MJESEČNA SERIJA INDEKSA INDUSTRIJSKE PROIZVODNJE - KALENDARSKI PRILAGOĐENI INDEKSI
 TABLE 2. MONTHLY SERIES OF INDUSTRIAL PRODUCTION INDICES - WORKING-DAY ADJUSTED INDICES

φ 2015 = 100

KD BiH 2010: GIG, Područja i Oblasti	KALENDARSKI PRILAGOĐENI INDEKSI / Working-day adjusted indices													NACE Rev. 2: MIGs, Sections and Divisions
	I/19	II/19	III/19	IV/19	V/19	VI/19	VII/19	VIII/19	IX/19	X/19	XI/19	XII/19	I/20	
Ukupno	93.4	98.7	107.3	101.9	104.8	104.3	109.8	99.9	103.9	105.7	107.7	103.9	95.7	Total
AI	79.7	95.5	105.5	108.1	109.1	107.9	113.0	101.2	109.0	110.9	104.8	90.7	83.6	AI
AE	107.5	103.8	105.7	86.8	93.5	94.4	102.4	101.4	90.8	91.4	108.7	121.0	118.4	AE
BB	96.3	106.7	118.1	115.7	114.3	120.4	115.7	97.5	118.4	116.9	109.3	100.0	90.9	BB
CD	118.7	107.5	111.0	130.3	118.0	104.6	100.2	90.0	105.7	102.0	111.8	96.8	96.1	CD
CN	89.8	94.5	106.2	107.9	109.4	107.1	115.4	100.0	109.6	113.8	110.8	106.2	86.2	CN
Područje B	81.6	97.4	108.1	97.6	99.3	108.4	115.4	114.8	110.7	109.6	119.3	109.5	92.8	Section B
05	105.4	106.0	114.5	91.8	97.3	106.8	112.9	107.2	102.9	107.3	123.7	125.3	113.8	05
07	20.0	75.1	81.8	82.3	88.5	102.0	111.9	129.3	116.8	92.6	97.7	66.1	19.8	07
08	51.3	76.8	102.5	132.6	114.5	115.2	124.3	119.5	130.6	146.4	123.5	95.4	88.4	08
Područje C	87.8	94.7	106.6	106.5	106.7	106.1	108.4	94.4	105.6	107.9	104.1	95.2	85.4	Section C
10	92.1	95.3	107.2	111.2	115.6	101.0	117.1	114.2	113.7	113.4	111.2	114.4	93.7	10
11	78.3	65.8	105.0	121.6	111.1	121.8	132.1	131.8	114.5	103.8	98.7	117.1	56.2	11
12	54.7	52.4	21.1	23.5	18.9	21.0	18.4	22.5	16.9	12.7	15.6	124.1	8.2	12
13	72.9	69.1	66.2	62.6	72.6	60.5	55.1	54.9	57.7	66.4	57.8	65.8	76.5	13
14	100.4	108.6	102.9	117.6	109.8	109.6	112.8	76.2	125.1	122.9	116.3	103.8	90.4	14
15	92.9	94.8	90.7	82.1	89.3	92.9	100.2	69.9	94.3	98.1	92.6	78.6	83.2	15
16	58.1	74.7	87.4	85.2	92.2	83.6	94.4	88.1	96.9	104.7	92.5	79.6	78.3	16
17	82.8	101.7	71.9	96.6	103.1	98.8	105.5	65.5	102.6	101.7	92.0	94.9	100.2	17
18	85.9	95.7	118.5	108.5	118.5	97.8	94.5	149.1	129.4	128.9	123.6	109.8	95.1	18
19	25.5	24.5	28.1	38.1	26.7	23.7	24.0	22.3	24.3	23.3	22.1	23.4	21.8	19
20	102.5	99.3	109.4	104.2	108.6	107.2	121.2	103.9	103.8	111.4	106.4	101.5	101.9	20
21	71.3	103.0	142.5	119.8	119.5	141.9	149.3	72.6	102.5	190.2	190.1	110.0	101.7	21
22	113.5	125.0	138.6	144.6	145.2	138.9	157.5	130.9	151.9	159.1	151.1	126.1	118.6	22
23	43.4	65.7	104.6	110.4	106.3	101.5	107.2	107.2	108.0	125.7	108.6	84.4	58.1	23
24	103.4	98.1	107.0	107.1	108.3	92.9	84.0	81.6	73.2	69.6	74.8	66.4	73.9	24
25	94.0	108.3	121.0	107.8	120.9	125.1	128.4	109.0	120.6	124.6	108.9	106.8	96.3	25
26	294.9	270.9	339.1	326.6	299.6	290.0	330.2	274.2	404.5	455.9	398.1	493.2	322.0	26
27	104.1	117.2	116.6	128.1	119.7	115.4	124.3	105.3	120.4	121.2	125.6	100.5	102.8	27
28	119.7	110.2	130.4	129.7	118.8	148.3	134.8	107.1	132.8	126.6	123.1	100.2	104.3	28
29	97.9	106.1	116.2	110.3	97.9	107.7	89.0	72.3	101.1	102.4	103.1	65.6	86.4	29
30	61.3	90.9	98.5	99.9	102.9	87.9	83.5	71.8	73.9	77.9	81.1	84.1	51.6	30
31	119.9	108.9	113.8	133.2	119.6	106.4	101.1	90.7	106.1	101.2	112.4	97.6	97.4	31
32	131.2	194.3	207.9	240.6	220.5	214.2	258.2	169.8	153.2	146.0	157.9	254.2	127.7	32
33	96.0	95.1	81.7	84.1	68.4	80.0	92.0	83.4	93.0	96.0	85.4	93.4	79.1	33
Područje D	119.1	113.1	111.0	89.6	99.4	97.9	107.9	109.4	94.1	94.2	114.2	132.9	133.2	Section D
35	119.1	113.1	111.0	89.6	99.4	97.9	107.9	109.4	94.1	94.2	114.2	132.9	133.2	35

TABELA 3. MJESEČNA SERIJA INDEKSA INDUSTRIJSKE PROIZVODNJE - DESEZONIRANI INDEKSI
TABLE 3. MONTHLY SERIES OF INDUSTRIAL PRODUCTION INDICES - SEASONALLY ADJUSTED INDICES

φ 2015 = 100

KD BiH 2010: GIG, Područja i Oblasti	DESEZONIRANI INDEKSI / Seasonally adjusted indices													NACE Rev. 2: MIGs, Sections and Divisions
	I/19	II/19	III/19	IV/19	V/19	VI/19	VII/19	VIII/19	IX/19	X/19	XI/19	XII/19	I/20	
Ukupno	103.9	105.7	105.4	103.5	105.5	104.1	105.8	101.3	102.2	100.4	103.0	101.6	105.7	Total
AI	100.1	108.5	107.3	105.9	104.9	103.5	104.9	99.3	101.9	101.5	101.0	98.3	105.9	AI
AE	100.6	100.8	99.8	94.9	100.2	102.0	105.6	105.4	96.0	91.1	102.6	107.4	110.6	AE
BB	122.1	119.2	118.9	115.6	113.4	114.7	112.5	103.8	106.5	101.5	103.6	104.8	114.1	BB
CD	121.7	110.2	109.6	123.0	120.4	106.4	106.5	99.9	100.2	95.5	108.2	94.4	99.0	CD
CN	105.1	107.1	108.2	105.5	109.2	103.5	107.3	101.7	106.5	107.9	108.2	101.7	101.2	CN
Područje B	99.5	108.6	109.7	107.5	105.8	109.5	110.8	106.8	102.5	98.0	107.0	107.0	111.4	Section B
05	109.2	111.4	112.7	101.2	104.5	112.1	114.3	105.5	101.1	99.9	113.0	116.7	117.7	05
07	69.0	89.4	85.4	92.5	89.4	96.1	92.5	107.3	96.2	73.2	85.7	90.3	73.1	07
08	98.0	123.5	125.9	134.2	121.6	105.0	108.0	95.4	104.2	113.1	106.5	101.0	149.9	08
Područje C	104.8	105.6	107.3	103.8	103.9	102.1	102.1	97.6	100.5	100.3	101.0	97.4	101.9	Section C
10	104.6	106.4	108.3	108.3	117.2	102.0	110.3	106.5	111.1	109.4	111.7	111.2	106.3	10
11	118.1	101.9	113.8	106.8	106.2	108.8	104.0	101.9	115.8	110.4	110.2	111.9	88.6	11
12	63.8	45.2	32.6	31.3	27.2	24.9	24.3	19.5	20.3	17.8	18.4	26.4	13.0	12
13	76.7	70.1	62.4	59.5	70.8	56.2	57.4	64.9	52.8	60.9	55.9	80.1	80.4	13
14	104.0	107.3	104.7	109.3	107.4	107.7	104.8	94.5	112.1	113.2	106.4	100.1	94.8	14
15	93.8	92.4	88.4	89.2	89.2	90.4	93.9	90.8	90.4	91.7	89.0	78.0	84.4	15
16	86.1	91.4	89.9	86.7	87.2	78.1	87.0	85.2	87.9	90.8	84.5	85.4	105.6	16
17	87.5	102.7	86.4	98.9	94.2	93.0	96.6	72.2	95.9	98.0	90.5	93.3	105.2	17
18	108.5	121.2	116.0	113.0	124.4	115.6	102.0	119.8	114.3	112.3	111.8	100.7	118.1	18
19	24.2	26.2	27.3	37.5	27.4	25.8	23.6	21.4	23.3	22.3	22.8	24.6	20.8	19
20	111.7	110.3	109.3	100.2	107.6	107.5	118.4	108.7	100.7	102.3	104.0	101.7	109.6	20
21	93.5	112.5	150.7	120.6	128.6	144.8	145.4	100.8	108.4	142.5	140.6	98.2	127.7	21
22	149.2	142.5	140.5	141.0	136.6	128.6	144.8	130.9	144.5	144.5	149.9	139.6	156.1	22
23	90.9	106.6	111.5	100.3	95.4	92.1	96.4	93.6	93.4	102.9	105.5	108.1	112.9	23
24	104.8	101.0	102.9	106.0	105.1	94.9	80.8	81.3	75.2	71.8	73.8	66.7	75.4	24
25	123.8	128.9	122.8	110.2	117.6	117.1	122.9	106.0	107.9	107.2	104.7	112.8	126.8	25
26	315.8	272.4	324.6	340.6	294.9	289.1	337.3	294.8	389.5	450.9	389.7	466.0	356.7	26
27	118.8	124.2	118.5	127.6	119.4	114.0	123.9	111.3	113.9	111.7	117.6	101.4	116.0	27
28	124.0	120.3	129.1	121.9	118.0	133.7	125.0	116.6	124.6	118.5	120.3	111.9	111.0	28
29	99.8	101.9	105.3	102.5	98.4	98.9	95.2	90.1	95.0	93.7	93.9	85.8	88.7	29
30	97.3	109.1	99.7	88.1	98.3	80.8	82.1	78.1	77.6	71.0	80.9	73.4	81.7	30
31	120.7	111.2	111.7	126.9	121.5	106.8	107.8	103.0	102.8	95.6	109.4	95.1	98.4	31
32	164.8	189.2	174.2	185.6	171.3	192.4	227.9	205.5	179.2	167.5	200.0	274.9	166.2	32
33	111.9	100.4	86.7	87.4	70.0	80.0	90.1	84.0	84.9	91.3	82.1	88.3	90.0	33
Područje D	104.2	105.5	100.0	99.0	110.0	108.1	112.4	114.1	105.0	99.1	110.5	114.0	116.4	Section D
35	104.2	105.5	100.0	99.0	110.0	108.1	112.4	114.1	105.0	99.1	110.5	114.0	116.4	35

TABELA 4. MJESEČNA SERIJA INDEKSA INDUSTRIJSKE PROIZVODNJE - TREND
TABLE 4. MONTHLY SERIES OF INDUSTRIAL PRODUCTION INDICES - TREND

φ 2015 = 100

KD BiH 2010: GIG, Područja i Oblasti	TREND / Trend													NACE Rev. 2: MIGs, Sections and Divisions
	I/19	II/19	III/19	IV/19	V/19	VI/19	VII/19	VIII/19	IX/19	X/19	XI/19	XII/19	I/20	
Ukupno	105.7	105.0	104.3	103.9	104.0	104.4	104.6	104.1	103.1	102.4	102.6	103.3	104.1	Total
AI	105.3	105.9	106.3	105.6	104.7	104.1	103.3	102.3	101.6	101.3	101.1	101.7	102.8	AI
AE	102.2	100.8	99.0	97.8	99.6	102.6	104.7	103.1	97.4	95.7	101.1	107.0	109.4	AE
BB	117.1	118.3	117.9	115.8	114.0	112.5	109.9	107.4	105.9	105.2	105.8	107.7	109.4	BB
CD	120.3	113.2	112.2	117.2	117.1	110.6	105.2	101.3	98.7	100.3	102.3	98.8	95.8	CD
CN	105.8	105.8	105.9	106.0	106.1	106.1	106.0	105.9	105.8	105.6	105.3	105.0	104.9	CN
Područje B	106.0	108.7	111.7	111.8	109.6	108.5	107.0	104.1	102.9	103.9	106.8	109.8	111.7	Section B
05	111.0	113.3	115.7	114.8	112.2	112.1	110.8	107.0	104.5	105.8	111.0	114.7	114.7	05
07	86.4	86.5	87.8	89.3	90.7	91.9	92.5	91.9	88.9	84.9	82.1	79.4	76.9	07
08	106.7	115.2	123.2	124.6	118.5	110.0	104.4	102.4	104.8	107.8	108.0	113.3	122.4	08
Područje C	106.0	105.6	105.6	104.8	103.5	102.4	101.4	100.6	100.3	100.1	99.9	100.2	101.3	Section C
10	106.3	107.5	108.5	109.3	109.2	107.9	107.6	108.3	108.7	108.5	108.9	109.5	109.7	10
11	106.6	106.6	106.7	106.8	106.9	107.0	107.0	107.1	107.2	107.3	107.3	107.3	107.4	11
12	35.0	33.5	31.8	30.1	28.6	27.0	25.6	24.3	23.2	22.1	21.2	20.3	19.4	12
13	70.7	70.1	64.0	63.3	64.3	60.5	59.6	60.5	58.4	58.1	62.8	73.6	81.1	13
14	102.2	103.8	104.9	105.6	105.8	105.4	104.5	104.3	105.1	105.2	103.5	100.9	98.5	14
15	96.1	93.1	90.8	89.5	89.9	91.1	92.0	92.2	91.3	90.0	87.3	84.5	85.2	15
16	89.6	89.4	88.8	87.5	85.9	84.9	85.4	86.6	87.7	88.2	88.2	89.4	91.4	16
17	95.7	94.9	94.2	93.7	93.2	92.3	90.9	90.1	91.5	93.3	94.4	96.0	97.7	17
18	119.3	118.2	117.4	116.8	116.3	115.2	114.2	113.9	113.5	112.7	112.0	111.7	112.2	18
19	25.2	25.6	27.5	34.1	27.4	25.4	23.7	22.1	23.4	22.5	23.0	23.3	21.6	19
20	111.4	110.0	108.6	107.7	107.9	108.8	108.9	107.6	105.9	105.1	105.1	105.7	106.7	20
21	124.7	125.2	126.8	127.7	128.5	128.9	127.3	124.7	123.7	124.0	122.6	120.7	120.4	21
22	144.2	143.0	141.0	139.9	136.1	135.4	138.0	137.8	140.5	145.7	146.1	146.2	152.0	22
23	96.2	103.6	107.1	101.7	96.0	94.2	94.8	94.5	96.0	101.2	105.4	108.4	110.4	23
24	104.7	102.9	101.6	100.0	96.7	91.6	86.3	82.3	78.7	75.5	73.4	72.5	72.4	24
25	121.3	121.4	119.7	117.9	117.4	117.2	115.5	112.4	110.3	109.9	111.1	114.3	117.6	25
26	305.4	310.9	317.0	323.9	328.1	335.4	343.6	353.4	369.6	381.1	387.2	393.5	393.3	26
27	118.9	120.5	121.9	123.3	121.8	119.8	118.2	114.8	113.5	113.8	110.4	108.6	113.7	27
28	121.9	122.3	122.6	122.5	122.5	122.3	121.6	120.4	119.2	117.9	116.2	114.4	112.8	28
29	99.0	101.2	102.2	101.4	99.6	97.8	95.5	93.7	93.2	92.9	91.3	89.3	88.5	29
30	103.8	104.6	100.0	94.6	92.3	86.4	81.9	80.2	77.5	76.6	77.9	78.7	81.1	30
31	119.2	116.1	115.8	117.7	116.7	112.3	108.1	105.1	102.9	102.3	101.8	99.1	96.5	31
32	168.2	173.0	177.1	180.9	184.7	189.0	192.6	194.0	194.3	196.0	199.9	203.1	204.0	32
33	106.8	101.7	88.6	83.9	82.3	83.6	85.7	84.8	86.6	86.5	84.1	85.7	89.0	33
Područje D	106.1	104.2	101.6	102.2	106.8	109.7	111.6	111.3	106.0	103.8	108.5	113.4	114.6	Section D
35	106.1	104.2	101.6	102.2	106.8	109.7	111.6	111.3	106.0	103.8	108.5	113.4	114.6	35

Prilog 1. IZVOD IZ KLASIFIKACIJE DJELATNOSTI KD BIH 2010
 Inset 1. EXTRACT FROM CLASSIFICATION OF ACTIVITIES KD BIH 2010

KD BIH 2010, GIG-ovi, Područja, Oblasti i djelatnosti

NACE Rev.2: MIGs, Sections and Divisions of activities

Oznaka / Šifra	Naziv kategorije	Label / Code	Category name
Ukupno	Ukupno industrija	Total	Total industry
GIG	Glavne industrijske grupe (GIG)	MIGs	Main Industrial Groups (MIGs)
AI	Intermedijarni proizvodi	AI	Intermediate goods
AE	Energija	AE	Energy
BB	Kapitalni proizvodi	BB	Capital goods
CD	Trajni proizvodi za široku potrošnju	CD	Consumer durables
CN	Netrajni proizvodi za široku potrošnju	CN	Consumer non-durables
	Područja i oblasti KD BIH 2010		NACE Rev.2 Sections and Divisions
B	VAĐENJE RUDA I KAMENA	B	MINING AND QUARRYING
05	Vađenje uglja i lignita (mrkog uglja)	05	Mining of coal and lignite
06	Vađenje sirove nafte i prirodnog plina	06	Extraction of crude petroleum and natural gas
07	Vađenje ruda metala	07	Mining of metal ores
08	Vađenje ostalih ruda i kamena	08	Other mining and quarrying
09	Pomoćne uslužne djelatnosti u vađenju ruda i kamena	09	Mining support service activities
C	PRERAĐIVAČKA INDUSTRIJA	C	MANUFACTURING
10	Proizvodnja prehrambenih proizvoda	10	Manufacture of food products
11	Proizvodnja pića	11	Manufacture of beverages
12	Proizvodnja duhanskih proizvoda	12	Manufacture of tobacco products
13	Proizvodnja tekstila	13	Manufacture of textiles
14	Proizvodnja odjeće	14	Manufacture of wearing apparel
15	Proizvodnja kože i proizvoda od kože	15	Manufacture of leather and related products
16	Prerada drveta i proizvoda od drveta i pluta, osim namještaja; proizvodnja predmeta od slame i pletarskih materijala	16	Manufacture of wood and of products of wood and cork, except furniture; manufacture of articles of straw and plaiting materials
17	Proizvodnja papira i proizvoda od papira	17	Manufacture of paper and paper products
18	Štampanje i umnožavanje snimljenih zapisa	18	Printing and reproduction of recorded media
19	Proizvodnja koksa i rafiniranih naftnih proizvoda	19	Manufacture of coke and refined petroleum products
20	Proizvodnja hemikalija i hemijskih proizvoda	20	Manufacture of chemicals and chemical products
21	Proizvodnja osnovnih farmaceutskih proizvoda i farmaceutskih preparata	21	Manufacture of basic pharmaceutical products and pharmaceutical preparations
22	Proizvodnja proizvoda od gume i plastičnih masa	22	Manufacture of rubber and plastic products
23	Proizvodnja ostalih proizvoda od nemetalnih minerala	23	Manufacture of other non-metallic mineral products
24	Proizvodnja baznih metala	24	Manufacture of basic metals
25	Proizvodnja gotovih metalnih proizvoda, osim mašina i opreme	25	Manufacture of fabricated metal products, except machinery and equipment
26	Proizvodnja računara, elektronskih i optičkih proizvoda	26	Manufacture of computer, electronic and optical products
27	Proizvodnja električne opreme	27	Manufacture of electrical equipment
28	Proizvodnja mašina i opreme, d. n.	28	Manufacture of machinery and equipment n.e.c.
29	Proizvodnja motornih vozila, prikolica i poluprikolica	29	Manufacture of motor vehicles, trailers and semi-trailers
30	Proizvodnja ostalih saobraćajnih sredstava	30	Manufacture of other transport equipment
31	Proizvodnja namještaja	31	Manufacture of furniture
32	Ostala prerađivačka industrija	32	Other manufacturing
33	Popravka i instalacija mašina i opreme	33	Repair and installation of machinery and equipment
D	Proizvodnja i snabdijevanje električnom energijom, plinom, parom i klimatizacija (izuzev grane 35.3 - proizvodnja i snabdijevanje parom i klimatizacija)	D	Electricity, gas, steam and air conditioning supply (except group 35.3 - Steam and air conditioning supply)
35	Proizvodnja i snabdijevanje električnom energijom i plinom	35	Electricity and gas supply

METODOLOŠKA OBJAŠNENJA

Agencija za statistiku BiH i entitetski zavodi za statistiku su uskladili prezentaciju i interpretaciju mjesečnih indeksa industrijske proizvodnje s onom koja je propisana EU uredbama o kratkoročnim poslovnim statistikama i preporukama Eurostata o publikovanju indeksa industrijske proizvodnje. Agencija za statistiku BiH, pored redovnog mjesečnog saopćenja o indeksu fizičkog obima industrijske proizvodnje, redovno objavljuje i serije mjesečnih indeksa koji su obračunati prema baznoj 2015. godini.

Usklađivanje sa statističkim konceptima EU i način prezentacije podataka omogućuje korisnicima podataka neposredno poređenje podataka za Bosnu i Hercegovinu sa podacima drugih zemalja koje prezentuje i publikuje Eurostat na internet stranicama: <http://ec.europa.eu/eurostat> i <http://ec.europa.eu/eurostat/euroindicators>

Metod računanja

Koncepti, definicije i metodologija koji se koriste za izračunavanje indeksa industrijske proizvodnje su usklađeni sa EU propisima u domenu kratkoročnih statistika (*EU STS - Short Term Statistics*).

Osnovne informacije o indeksu industrijske proizvodnje i kratka metodologija izračuna prikazane su u dokumentu "Metodološka uputstva za izračunavanje indeksa fizičkog obima industrijske proizvodnje u Bosni i Hercegovini - (MD 29)" koja je dostupna na web stranici Agencije za statistiku BiH: <http://www.bhas.gov.ba> u sekciji industrija.

Standardi i klasifikacije

Za izračunavanje i objavljivanje rezultata indeksa industrijske proizvodnje od 2013. koriste se novi standardi: BiH klasifikacija djelatnosti - KD BiH 2010 (EU NACE Rev.2.) i Mjesečna NIP BiH 2018. Mjesečna NIP BiH 2018 je Nomenklatura industrijskih proizvoda Bosne i Hercegovine, koja se koristi za provođenje Mjesečnog izvještaja industrije M KPS IND-1. Mjesečna NIP BiH 2018 zasnovana je na izvornoj NIP BiH 2010 (Službeni glasnik br. 12/11 i 41/11) i ažurirana sa izmjenama i dopunama u EU PRODCOM Listi nastalim od 2013. do 2017. godine. Mjesečna NIP BiH 2018 je dodatno razrađena i dopunjena u skladu sa specifičnim potrebama obračuna indeksa industrijske proizvodnje u BiH, a saglasno sa EU regulativama za kratkoročne poslovne statistike.

NOTES ON METHODOLOGY

Agency for Statistics of BiH and Entity Statistics are harmonized presentation and interpretation of monthly industrial production indices with those arranged by the EU regulations on short-term statistics and Eurostat's recommendations on publication of the industrial production indices. Agency for Statistics of BiH, next to regular monthly releases on the index of industrial production, regularly publishes series of monthly indices which are calculated according to the base 2015th year.

Harmonization with the EU statistical concepts and method of presentation of data enables users of data to directly compare data for Bosnia and Herzegovina with the data of other countries which are published on the Eurostat website: <http://ec.europa.eu/eurostat> and <http://ec.europa.eu/eurostat/euroindicators>.

Calculation method

Concepts, definitions and methodology used for calculating of the industrial production indices are harmonized with the EU Regulations in the field of Short Term Statistics (*EU STS*).

The basic information on BiH industrial production index and short methodology are presented in the publication "Methodological guidelines for the calculation of the industrial production index in Bosnia and Herzegovina (MD 29)", which is available on the website of the Agency for Statistics of BiH: <http://www.bhas.gov.ba> in Industry section.

Standards and Classifications

For calculating and publishing the results of the industrial production index from 2013, new standards are used: BiH Classification of Activities KD BIH 2010 (EU NACE Rev. 2.) and Monthly Nomenclature of Industrial Products NIP BiH 2018. Monthly NIP 2018 Nomenclature of Industrial Products of Bosnia and Herzegovina, which was used for the implementation of Monthly Industry Report M KPS IND-1. Monthly NIP 2018 is based on the original NIP BiH 2010 (Official Gazette no. 12/11 and 41/11) and updated with amendments in EU PRODCOM Lists occurring since 2013. to the 2017. Monthly NIP 2018 is further developed and supplemented in accordance with the specific purpose of calculating the index of industrial production in BiH, and in accordance with EU regulations for short-term business statistics.

Indeks industrijske proizvodnje (IPI) obuhvata djelatnosti koje su razvrstane u sljedeća područja KD BiH 2010:

- B - Vađenje ruda i kamena
- C - Prerađivačka industrija
- D - Proizvodnja i snabdijevanje električnom energijom i plinom (isključujući granu 35.3)

Saglasno EU STS propisu Oblast 36 - Sakupljanje, prečišćavanje i snabdijevanje vodom i Grana 35.3 - Proizvodnja i snabdijevanje parom i klimatizacija ne ulaze u obračun indeksa industrijske proizvodnje.

Izvod iz KD BiH 2010 koji se odnosi na područja i oblasti djelatnosti koji pripadaju industriji nalazi se u sastavu saopćenja.

Agregati glavnih industrijskih grupa (GIG)

Grupisanje se vrši prema pretežnoj upotrebi proizvoda unutar oblasti i grane djelatnosti iz klasifikacije KD BiH 2010.

- **AI - Proizvodi za međufaznu potrošnju:** oblasti i grane KD BiH 2010: 07 - 09, 10.6, 10.9, 13.1 - 13.3, 16, 17, 20.1 - 20.3, 20.5, 20.6, 22 - 24, 25.5 - 25.7, 25.9, 26.1, 26.8, 27.1 - 27.4 i 27.9
- **AE - Energija:** oblasti KD BiH 2010: 05, 06, 19 i 35 (isključujući 35.3)
- **BB - Kapitalni proizvodi:** oblasti i grane KD BiH 2010: 25.1 - 25.4, 26.2, 26.3, 26.5, 26.6, 28, 29, 30.1 - 30.4, 32.5 i 33
- **CD - Trajni proizvodi za široku potrošnju:** oblasti i grane KD BiH 2010: 26.4, 26.7, 27.5, 30.9, 31, 32.1 i 32.2
- **CN - Netrajni proizvodi za široku potrošnju:** oblasti i grane KD BiH 2010: 10.1 - 10.5, 10.7, 10.8, 11, 12, 13.9, 14, 15, 18, 20.4, 21, 32.3, 32.4 i 32.9

Prikazivanje serija indeksa

U skladu sa preporukama Eurostata, desezoniranje i kalendarsko prilagođavanje se vrši metodom TRAMO-SEATS u JDEMETRA+ okruženju na mjesečnoj seriji izvornih indeksa industrijske proizvodnje. Produžavanje serije indeksa dodavanjem novih mjesečnih zapažanja za svaki idući mjesec može, zbog karakteristika primijenjene metode, prouzrokovati ispravke već objavljenih desezoniranih i kalendarski prilagođenih indeksa za nekoliko mjeseci unazad.

Industrial production index (IPI) covers activities classified into the following sections of the KD BiH 2010:

- *B - Mining and quarrying*
- *C - Manufacturing*
- *D - Electricity and gas supply (excluding group 35.3)*

In line with EU STS Regulation Section 36 - Collection, purification and water supply and Group 35.3 - Production and supply of steam and air conditioning are not included in the calculation of the index of industrial production.

Extract from the NACE 2010 which refers to the sections and divisions of activities that belong to the industry given the statement.

Main Industrial Grouping (MIGs) aggregates

Grouping is done according to the prevailing use of the product within the division and group of NACE rev.2.

- *AI - Intermediate goods: the KD BiH 2010 divisions and groups: 07 - 09, 10.6, 10.9, 13.1 - 13.3, 16, 17, 20.1 - 20.3, 20.5, 20.6, 22 - 24, 25.5 - 25.7, 25.9, 26.1, 26.8, 27.1 - 27.4 and 27.9*
- *AE - Energy: the KD BiH 2010 divisions: 05, 06, 19 and 35 (exl. 35.3)*
- *BB - Capital goods: the KD BiH 2010 divisions and groups: 25.1 - 25.4, 26.2, 26.3, 26.5, 26.6, 28, 29, 30.1 - 30.4, 32.5 and 33*
- *CD - Consumer durables: the KD BiH 2010 divisions and groups: 26.4, 26.7, 27.5, 30.9, 31, 32.1 and 32.2*
- *CN - Consumer non-durables: the KD BiH 2010 divisions and groups: 10.1 - 10.5, 10.7, 10.8, 11, 12, 13.9, 14, 15, 18, 20.4, 21, 32.3, 32.4 and 32.9*

Indices series presentation

In accordance with the Eurostat's Recommendations, seasonal adjustment and working-day adjustment has been done by using the TRAMO-SEATS method in JDEMETRA+ environment on the monthly series of original industrial production indices. Extending indices series by adding new monthly observations for each month could, because of the applied method characteristics, cause subsequent corrections of already published seasonally and working-day adjusted indices for several months backwards.

Izdaje i štampa Agencija za statistiku Bosne i Hercegovine, 71000 Sarajevo, Zelenih beretki 26
Published and printed by the Agency for Statistics of Bosnia and Herzegovina, 71000 Sarajevo, Zelenih beretki 26

Telefon/Phone: +387 (33) 220 626 * Telefaks /Telefax: +387 (33) 220 622
Elektronska pošta/E-mail: bhas@bhas.gov.ba * Internetska stranica Web site: <http://www.bhas.gov.ba>

Odgovara direktor dr. sc. Velimir Jukić
Person responsible: Velimir Jukić, PhD, Director

Saopćenje priredili: Fahir Kanlić, Radomir Mutabdžija, Tanja Miović i Belma Mesihović
Prepared by: Fahir Kanlić, Radomir Mutabdžija, Tanja Miović and Belma Mesihović

Podaci iz ovog saopćenja objavljuju se i na internetu
First Release data are also published on the Internet
