

**Bosna i Hercegovina  
Agencija za statistiku  
Bosne i Hercegovine**

*Bosnia and Herzegovina  
Agency for Statistics of  
Bosnia and Herzegovina*

**ISSN 1840-1058**

**TB 07**

**Tematski bilten  
*Thematic Bulletin***

**SOCIJALNA SKRB**  
*SOCIAL WELFARE*

**2002 - 2007**

**Sarajevo, 2008.**

**Izdaje i tiska :**

*Published and printed by:*

**Agencija za statistiku Bosne i Hercegovine,  
Bosna i Hercegovina, Sarajevo, Zelenih beretki 26**  
Agency for Statistics of Bosnia and Herzegovina,  
Bosna and Herzegovina, Sarajevo, Zelenih beretki 26

**Odgovara:**

*Personaly responsible:*

**Zdenko Milinović, ravnatelj**

*Mr Zdenko Milinović, director*

**Podatke priredili:**

*Data prepared by:*

**Vedrana Veljo i Aida Eskić**

*Vedrana Veljo i Aida Eskić*

**Izrada tablica i grafika:**

*Tables and graphs prepared by:*

**Vedrana Veljo i Aida Eskić**

*Vedrana Veljo i Aida Eskić*

**Tehnički urednik:**

*Graphical design:*

**Aziz Vreto**

*Aziz Vreto*

**Molimo korisnike Biltena da prilikom uporabe podataka obvezatno navedu izvor**

*Users are kindly requested to mention data source*

# KAZALO

## Contents

<b>Predgovor</b> <i>Foreword</i>	7
<b>Metodološke napomene</b> <i>Notes on methodology</i>	9
<b>I Korisnici, oblici, mjere i usluge socijalne skrbi</b> <i>Beneficiaries, forms, measures and services of social welfare</i>	19
<b>1. Centri za socijalnu skrb</b> <i>Social welfare centres</i>	21
<b>2. Obrađeni slučajevi – intervencije u centru</b> <i>Treatments rendered in centre</i>	21
<b>3. Zaposleni u centrima za socijalnu skrb</b> <i>Employees in the social welfare centres</i>	22
<b>Grafik 1. Zaposleni u centrima za socijalnu skrb</b> <i>Graph 1. Employees in the social welfare centres</i>	22
<b>Maloljetni korisnici socijalne skrbi</b> <i>Minor beneficiaries of social welfare</i>	23
<b>4. Korisnici po kategorijama i spolu</b> <i>Beneficiaries by categories and sex</i>	23
<b>Grafik 2. Maloljetni korisnici po spolu</b> <i>Graph 2. Minor beneficiaries by sex</i>	27
<b>Grafik 3. Maloljetni korisnici po kategorijama</b> <i>Graph 3. Minor beneficiaries by categories</i>	27
<b>Punoljetni korisnici socijalne skrbi</b> <i>Adult beneficiaries of social welfare</i>	28
<b>5. Korisnici po kategorijama i spolu</b> <i>Beneficiaries by categories and sex</i>	28
<b>Grafik 4. Punoljetni korisnici po spolu</b> <i>Graph 4. Adult beneficiaries by sex</i>	31
<b>Grafik 5. Punoljetni korisnici po kategorijama</b> <i>Graph 5. Adult beneficiaries by categories</i>	31

<b>6. Oblici i usluge socijalne skrbi – maloljetni korisnici</b>	<b>32</b>
<i>Forms and services of social welfare – minor beneficiaries</i>	
<b>7. Oblici i usluge socijalne skrbi - punoljetni korisnici</b>	<b>36</b>
<i>Forms and services of social welfare - adult beneficiaries</i>	
<b>II Ustanove socijalne skrbi</b>	<b>39</b>
<i>Social welfare institutions</i>	
<b>Domovi za djecu i mladež</b>	<b>41</b>
<i>Institutions for children and adolescents</i>	
<b>8. Korisnici po spolu i starosti</b>	<b>41</b>
<i>Residents by sex and age</i>	
<b>9. Korisnici po roditeljima</b>	<b>42</b>
<i>Residents by parents</i>	
<b>10. Struktura korisnika po roditeljima</b>	<b>42</b>
<i>Structure of beneficiaries by parents</i>	
<b>Grafik 6. Korisnici domova za djecu i mladež, po roditeljima</b>	<b>42</b>
<i>Graph 6. Residents of homes for children and youth, breakdown by parents</i>	
<b>11. Korisnici po školovanju</b>	<b>43</b>
<i>Residents by education</i>	
<b>12. Korisnici po plaćanju boravka u domu</b>	<b>43</b>
<i>Residents by payment</i>	
<b>13. Zaposleni u domovima za djecu i mladež</b>	<b>44</b>
<i>Employees in the institutions for children and youth</i>	
<b>Grafik 7. Zaposleni u domovima za djecu i mladež po spolu</b>	<b>44</b>
<i>Graph 7. Employees in the institutions for children and youth by sex</i>	
<b>Ustanove socijalne skrbi za invalidnu djecu i mladež ometenu u psihičkom i tjelesnom razvoju</b>	<b>45</b>
<i>Social welfare institutions for physically and mentally handicapped children and adolescents</i>	
<b>14. Korisnici po spolu i starosti</b>	<b>45</b>
<i>Residents by sex and age</i>	
<b>15. Korisnici po spolu i roditeljima</b>	<b>46</b>
<i>Residents by sex and parents</i>	

<b>Grafik 8. Korisnici po roditeljima</b> <i>Graph 8. Residents by parents</i>	<b>46</b>
<b>16. Korisnici po pohađanju škole</b> <i>Residents by school attendance</i>	<b>47</b>
<b>17. Korisnici po plaćanju boravka</b> <i>Residents by payment</i>	<b>47</b>
<b>18. Zaposleni u ustanovama za invalidnu djecu i mladež ometenu u psihičkom i tjelesnom razvitku</b> <i>Employees in the institutions for children and youth impeded in psychical and physical development</i>	<b>48</b>
<b>Ustanove socijalne skrbi za odrasle invalidne osobe</b> <i>Social welfare institutions for adult handicapped persons</i>	<b>49</b>
<b>19. Invalidi i rehabilitanti po invaliditetu</b> <i>Disabled and persons on rehabilitation by type of handicap</i>	<b>49</b>
<b>20. Invalidi i rehabilitanti po pravnoj osnovi i razlogu korištenja ustanove</b> <i>Disabled and persons on rehabilitation by legal base and reason for institutionalisation</i>	<b>50</b>
<b>Ustanove socijalne skrbi za odrasle osobe</b> <i>Social welfare institutions for adult persons</i>	<b>51</b>
<b>21. Korisnici po starosti</b> <i>Residents by age</i>	<b>51</b>
<b>22. Korisnici po plaćanju boravka u domu</b> <i>Residents by payment</i>	<b>51</b>
<b>23. Korisnici po razlogu smještaja</b> <i>Residents by reason for institutionalisation</i>	<b>52</b>



## **PREDGOVOR**

Agencija za statistiku BiH objavljuje bilten «Socijalna skrb u BiH» kao redovitu godišnju publikaciju. Podaci dati u ovom biltenu su rezultat agregiranja podataka entitetskih zavoda za statistiku Federacije BiH i Republike Srpske.

U biltenu «Socijalna skrb u BiH» Agencija za statistiku BiH objavljuje podatke o korisnicima svih oblika, mjera i usluga socijalne skrbi, ali i podatke o ustanovama socijalne skrbi i zaposlenim u tim ustanovama, u razdoblju 2002-2007. Podaci su razvrstani po starosti korisnika, stupnju ugroženosti, vrsti socijalnih potreba i ustanovama za pružanje socijalne skrbi.

Agencija za statistiku bit će zahvalna na svim primjedbama i sugestijama koje će doprinijeti poboljšanju slijedećeg biltena.

Zdenko Milinović  
Ravnatelj

## **FOREWORD**

*Agency for Statistics of BiH publishes a Bulletin «Social welfare in BiH» as a regular annual publication. This Bulletin is a result of aggregation data from entities statistical offices of Federation of BiH and Republic of Srpska.*

*In Bulletin «Social welfare in BiH» Agency for Statistics publishes data on beneficiaries of all forms, measures and services of social welfare as well as data on social welfare institutions and employees of this institutions for the period 2002-2007. Data are given by the age of beneficiaries, extent of disadvantage as well as by kind of social needs and social welfare institutions.*

*Agency for Statistics will appreciate any suggestions and comments that could improve our next Bulletin.*

Zdenko Milinović  
Director





## **METODOLOŠKE NAPOMENE**

### **Izvori podataka**

Podaci o maloljetnim i punoljetnim korisnicima socijalne skrbi i provedenim oblicima, mjerama i uslugama socijalne skrbi su rezultat agregiranja podataka usporedivih godišnjih istraživanja koja provode entitetske statistike i Distrikt Brčko.

### **Obuhvat podataka**

Podaci o korisnicima i oblicima socijalne skrbi kao i o ustanovama socijalne skrbi, odnose se na kalendarsku godinu.

### **Definicije**

#### **Korisnici socijalne skrbi**

Korisnikom socijalne skrbi smatra se svaka osoba koja je u tijeku izvještajne godine jednom ili više puta koristila određene oblike i mjere socijalne skrbi i usluge socijalnog rada.

Korisnici su razvrstani u dvije osnovne dobne skupine maloljetni i punoljetni korisnici.

## **MALOLJETNI KORISNICI**

### **Maloljetnici ugroženi obiteljskim okolnostima**

*Bez oba roditelja* - djeca i mladež čija su oba roditelja umrla.

*Nepoznatih roditelja* – djeca i mladež roditelja čiji se identitet ne može ustvrditi.

*Napušteni od roditelja* – djeca i mladež čiji su roditelji poznati i poznatog boravišta, ali su djecu napustili i odbijaju se o njima skrbiti, kao i djeca poznatih roditelja nepoznatog boravišta i drugi slučajevi napuštanja djece od strane roditelja.

## **NOTES ON METHODOLOGY**

### **Source of data**

Data on minor and adult beneficiaries of social welfare, and implemented forms, measures and services of social welfare are result of aggregating data from comparable annual survey which are conducted by Entity's Statistical Offices and Bureau of District Brcko.

### **Data coverage**

Data on beneficiaries and forms of social welfare, as well as data on social welfare institutions refer to a calendar year.

### **Definitions**

#### **Social welfare beneficiaries**

Social welfare beneficiary is every person who has used certain forms and measures of social welfare and social work services, once or several times during the reference year.

Beneficiaries are classified into two basic age groups – minor and adult beneficiaries.

## **MINOR BENEFICIARIES**

### **Minor beneficiaries disadvantaged by family situation**

*Without both parents* – children and youth with both parents dead.

*Of unknown parents* – children and youth of parents whose identity cannot be ascertained (foundlings).

*Abandoned by parents* – children and youth of known parents and residence, abandoned by parents who refuse to take care of them, as well as children of known parents and of unknown residence and other cases of parents abandoning children.

*Djeca roditelja spriječenih da obavljaju roditeljsku obvezu* uslijed izdržavanja kazne, dužeg liječenja u stacionaru, teškog kroničnog oboljenja, privremenog rada u inozemstvu, lišavanja radne sposobnosti i sl.

*Djeca roditelja lišenih roditeljskih prava* – djeca i mladež čijim je roditeljima odlukom suda oduzeto roditeljsko pravo. U ovu kategoriju spadaju i slučajevi kada je samo jednom od roditelja oduzeto roditeljsko pravo.

*Iz materijalno ugroženih obitelji* – djeca i mladež čiji roditelji nemaju ni minimalnih materijalnih i socijalnih uvjeta za podizanje djece, kao što su osobe bez stalnog izvora prihoda, s minimalnim prihodima po članu kućanstva, nezaposlene osobe, osobe s neriješenim stambenim pitanjima.

*Iz obitelji s poremećenim obiteljskim odnosima* – djeca i mladež koja žive u obiteljima u kojima postoje konfliktne okolnosti između pojedinih članova, svađe, grubosti, tuče, zlostavljanje, odsustvo emocionalnih veza i trajna neusklađenost odnosa, asocijalno, patološko i kriminalno ponašanje članova obitelji (skitnja, kriminal, prostitucija, uporaba alkohola i droge, itd.) kao i nebriga roditelja.

*Razvedenih ili roditelja u brakorazvodnoj parnici* – djeca i mladež čiji su roditelji razvedeni ili je brakorazvodna parnica u tijeku, za koje se na zahtjev suda utvrđuje kod kojeg će roditelja živjeti nakon razvoda braka, ili djeca za koju je u toku reguliranje alimentacije, viđanja drugog roditelja i drugo.

*Ostali maloljetnici ugroženi obiteljskom okolnošću* – djeca samohranih roditelja, izvanbračna djeca, djeca s neriješenim materijalnim, stambenim i drugim pitanjima.

*Children of parents prevented from performing parental duty* due to certain constraints such as imprisonment, prolonged treatment in hospital, severe chronic disease, temporary employment abroad, working incapability, etc.

*Children of parents deprived of parental right* - children and youth of parents deprived of parental right by the decision of court. Cases when only one parent is deprived of parental right are also included in this category.

*Coming from economically disadvantaged families* - children and youth whose parents cannot provide even a minimum financial or social conditions for raising children such as persons without the permanent source of income, persons with minimal income per household member, unemployed persons, persons with housing problems, etc.

*Coming from families with disturbed family relationships*-children and youth from families in which there are conflicts between family members, quarrels, asperities, beating, molesting, absence of emotional relationship and permanent incompatibility of relations, asocial, pathological and criminal behaviour of family members (vagrancy, crime, prostitution, alcohol or drug abuse, etc.) as well as parental indifference and negligence.

*Of divorced parents or parents in divorce procedure*-children and youth of divorced parents or parents in divorce procedure for whom, upon the request of court, the decision must be made on custody, financial support, right to visit a child, etc.

*Other minors with disturbed family relationship* – children of single parents, illegitimate children, children with financial, housing and other problems.

## **Maloljetnici ometeni u tjelesnom i psihičkom razvitku**

*Maloljetnicima ometenim u tjelesnom razvitku* se smatraju djeca i mladež s oštećenjem vida, sluha, s poremećajima u govoru i glasu, tjelesno invalidne kao i osobe višestruko ometene u razvitku.

*Maloljetnicima ometenim u psihičkom razvitku* se smatraju djeca i mladež koja su ometena u psihičkom razvitku, a razvrstana su prema važećim propisima o razvrstavanju i evidenciji ovih osoba.

## **Maloljetnici s poremećajima u ponašanju i ličnosti**

*S asocijalnim ponašanjem* – djeca i mladež sklona skitnji, besposličenju, bježanju od kuće, nedoličnom ponašanju, prostituciji, uporabi alkohola, prijevarama i sl.

*Maloljetni prestupnici ispod 14 godina* – djeca i mladež koja su izvršila prekršaj ili krivično djelo, a krivično su neodgovorna zbog uzrasta, kao i maloljetni narkomani.

**Psihički bolesne osobe** - maloljetne osobe sklone različitim psihičkim oboljenjima.

## **Maloljetni korisnici u stanju različitih potreba socijalne skrbi**

*Bez specifične kategorije* – djeca i mladež koja se ne mogu uvesti ni u jednu od navedenih kategorija, zdravstveno neosigurana djeca i mladež, kao i djeca i mladež kojima se pruža pomoć u ostvarivanju određenih prava.

## **PUNOLJETNI KORISNICI**

**Korisnici subvencioniranja troškova (stanarine, grijanja, sahrane)**

**Tjelesno i psihički ometeni**

## ***Physically and mentally handicapped minors***

*Physically handicapped minors* are children and youth with visual and hearing impairments, voice and speech impediments, physical handicaps and multiple disorders.

*Mentally handicapped minors* are children and youth with mental disorders, and are classified by current regulations on registration and classification of such persons.

## ***Minors with behavioural and personality disorders***

*With asocial behaviour* – children and youth inclined to vagrancy, running from home, indecent behaviour, prostitution, alcohol abuse, frauds, etc.

*Minor offenders under 14 years of age* – children and youth who have committed an offence or a criminal act and are not subject to legal prosecution due to their age as well as minor drug addicts.

**Mentally ill persons**–*Minor persons prone to various mental diseases.*

## ***Minor beneficiaries in need of different social and protective services***

*Without specific category* – children and youth who cannot be classified into any of the specific categories, children and youth without health insurance as well as children and youth being rendered assistance in exercising certain rights.

## ***ADULT BENEFICIARIES***

***Beneficiaries of subventions (for rents, heating, funeral)***

***Physically and mentally disabled***

*S oštećenim vidom* – odrasle slijepe i slabovide osobe.

*S oštećenim sluhom* – odrasle gluhe i nagluhe osobe.

*Tjelesno invalidne osobe* – odrasle osobe kod kojih je oboljenje trajno, zbog čega im je značajno smanjena radna sposobnost.

*Mentalno zaostale osobe* – odrasle osobe teško, teže, umjereno i lako mentalno zaostale.

*Ostale invalidne osobe* – odrasle osobe s ostalim tjelesnim oštećenjima, nesposobne za rad i neosigurane po drugom osnovu, zatim odrasli distrofičari, osobe s posljedicama cerebralne paralize, osobe s više smetnji, osobe s poremećajima u ponašanju i slično.

*S kombiniranim smetnjama* – osobe kod kojih je medicinski utvrđena neka od psihičkih ili živčanih bolesti (neurotičari, psihotičari, epileptičari) i sl.

*Osobe društveno neprihvatljivog ponašanja* su osobe s asocijalnim ponašanjem (skitnja, prosjačenje, prostitucija, osobe sklone vršenju krivičnih djela i prekršaja, uporabi alkohola, narkomanija).

*Psihički bolesne osobe* su osobe sklone raznim psihičkim oboljenjima.

**Osobe koje nemaju dovoljno prihoda za uzdržavanje, materijalno neosigurana**

*Materijalno neosigurane osobe* su osobe koje su sposobne za rad, ali nemaju sredstava za život, niti ih po drugom osnovu mogu osigurati i mlađe su od 65 godina (muškarci) odnosno 60 godina (žene).

*Osobe nesposobne za rad* su osobe potpuno i trajno nesposobne za rad, bez sredstava za život, a mlađe su od 65 godina (muškarci) odnosno 60 godina (žene).

*With visual disorders* – blind adults and adults with visual impairments.

*With hearing disorders* – deaf adults and adults with hearing impairments.

*Physically disabled* – adults with permanent diseases (incurable and long lasting) which reduced their working capability.

*Mentally disabled* – adult persons with severe, less severe, moderate and mild mental handicaps.

*Other disabled persons* – adults with other physical handicaps, unable to work and unprovided on other basis, adults with muscular dystrophy, persons suffering from cerebral paralysis, persons with multiple disorders, behavioural disorders, etc.

*With combined disorders* – persons with the medical diagnosis of certain mental or neurological disease (neurotics, psychotics and epileptics), etc.

*Persons with socially unacceptable behaviour* are persons with asocial behaviour (vagrancy, begging, prostitution, person's inclined criminal acts and offences, alcohol and drug abuse).

*Mentally ill persons* are persons prone to various mental diseases.

***Persons not having a sufficient income to support themselves, financially unprovided***

*Financially unprovided persons* are persons able to work but don't have finances for living or are unable to provide them on other basis and are under 65 years of age (men), or under 60 (women).

*Unable to work* – persons completely and permanently unable to work, without financial resources of living, and are under 65 (men), or 60 (women).

*Stare osobe bez obiteljskog staranja* – osobe koje nemaju djece ni drugih bližih srodnika koji su dužni o njima se starati kao i osobe bez sredstava za život (bez imovine ili bilo kakvih drugih redovitih prihoda, kao i osobe koje posjeduju imanje, ali zbog starosti ili slabosti nisu u mogućnosti da isto obrađuju).

*Kronično bolesne osobe* – slijepi, psihički oboljele, tjelesno invalidne i kronično oboljele osobe.

### **Bez specifične kategorije (drugi)**

Osobe s obiteljskim problemima, osobe u brakorazvodnom sporu i ostale osobe bez specifične kategorije.

## **OBLICI, MJERE I USLUGE SOCIJALNE SKRBI**

Pod oblikom, mjerom ili uslugom podrazumijeva se svaki slučaj sprovedene skrbi na temelju zakona i propisa iz ove oblasti od strane centra za socijalni rad, ili službe socijalne skrbi.

Podaci o oblicima, mjerama i uslugama odnose se na broj sprovedenih odnosno korištenih oblika, mjera i usluga u izvještajnom razdoblju, a ne na broj osoba. Jedna ista osoba može se pojaviti više puta kao korisnik tj. onoliko puta koliko je koristila neki od oblika, mjera i usluga tijekom izvještajne godine. Ako osoba više puta koristi isti oblik, mjeru ili uslugu bit će obuhvaćena samo jednom. Ako osoba koristi više oblika, mjera ili usluga obuhvatit će se kod svakog oblika, odnosno mjere ili usluge.

### **OBLICI SOCIJALNE SKRBI**

*Starateljstvo* podrazumijeva slučajeve kada se maloljetna ili punoljetna osoba lišena poslovne sposobnosti, stavlja pod

*Old persons without family care* – persons without children or any other close relatives obliged to take care of them as well as persons without resources to provide for a living ( without property or any other regular income as well as persons owning a farm but due to old age and weakness are unable to cultivate land and provide for life).

*Chronically ill* – blind, mentally ill, physically handicapped and persons with chronic disease.

### **Without specific category (others)**

Persons with family problems, persons in divorce procedure and other persons without specific category.

## **FORMS, MEASURES AND SERVICES OF SOCIAL WELFARE**

Form, measure or service are considered every case of protection provided by Centre of social welfare or Social welfare service on the basis of legal acts and regulations concerned with this field.

Data on forms, measures, and services refer to the number of conducted, that is, used forms, measures and services in the reference period, and not to the number of persons. One person can be shown several times as a beneficiary, as much times as it has used some of the forms, measures and services during the reference year. If the same person uses the same form, measure or service more than once, it is covered only once. If a person uses several forms, measures or services, it is covered by each form, measure and service.

### **FORMS OF SOCIAL WELFARE**

*Guardianship* refers to every case of appointing a guardian to look after the affairs of minor or adult person deprived of

starateljstvo.

*Usvojenje* podrazumijeva slučajeve zakonskog usvojenja.

### **Smještaj u ustanove**

*Predškolske ustanove* – podrazumijeva one slučajeve kada se troškovi smještaja i boravka osiguravaju iz sredstava socijalne ili dječje skrbi.

*Smještaj u ustanove socijalne skrbi* podrazumijeva smještaj maloljetnih i punoljetnih korisnika u odgovarajuće ustanove socijalne skrbi: dječji domovi, domovi za dojenčad i malu djecu, za djecu ometenu u razvoju, za odgojno zapuštenu djecu i mladež, domovi za stare i iznemogle, za umirovljenike, kao i domovi za odrasle invalidne osobe i prihvatne stanice za maloljetne i punoljetne osobe.

*Smještaj u drugu obitelj* podrazumijeva osiguravanje stanovanja, ishrane, odgoja i brige u obitelji u koju se smještaju osobe u stanju socijalne potrebe (djeca, odrasli, ostarjeli).

*Smještaj u učenički ili studentski dom, smještaj u ustanovu za djecu bez roditeljskog staranja, smještaj u ustanovu za rehabilitaciju i skrb, smještaj u druge ustanove socijalne skrbi kao i smještaj u dom za stare osobe* su također vidovi smještaja u ustanove u okviru oblika socijalne skrbi.

### **MJERE SOCIJALNE SKRBI**

*Mjere prema maloljetnicima* podrazumijevaju angažiranje centra za socijalni rad na provođenju odgojnih mjera koje je sud izrekao kao i mjera koje centar poduzima na osnovu svoje odluke.

*Upućivanje na školovanje i osposobljavanje* podrazumijeva angažiranje centra za socijalni rad oko uključivanja na redovito

working capability.

*Adoption* is considered every case of legal adoption.

### ***Placement (assignment) in institution***

*Pre-school institutions* – every case of accommodation expenses being financed from social welfare funds or funds for protection of children.

*Assignment to social welfare institutions* is considered accommodation of minor and adult beneficiaries in appropriate social welfare facilities such as: institutions for infants and young children, children and youth in psychical and physical development, socially maladjusted children and youth, rest or retirement homes, institutions for adult handicapped persons and shelter stations for minors and adults persons.

*Foster care* is considered consigning persons (children, adults, old persons) in need of social protection to a family for dwelling, nourishment, upbringing and care.

*Assignment to pupil and student hostel, assignment to institution for rehabilitation and protection, assignment to other social welfare institutions* as well as an *assignment to home for old people* are also modes of placement in institutions, in the frame of the forms of social welfare.

### ***MEASURES OF SOCIAL WELFARE***

*Measures concerning minors* are considered engagement of social welfare centre in conducting measures of upbringing proclaimed by court as well as measures conducted by centre upon its own decision.

*Assignment to school and vocational training* refers to the engagement of social welfare centre in including into the process

školoвање maloljetnih korisnika socijalne skrbi koji su napustili školu ili nisu bili obuhvaćeni redovitim školovanjem, kao i uključivanje djece i mladeži ometene u razvitku na specijalno obrazovanje.

*Ostale mjere* podrazumijevaju slučajeve pružanja savjeta u vezi s odgojnim i razvojnim problemima djece, osiguravanja ljetovanja i oporavka iz sredstava socijalne skrbi, reguliranja zdravstvene zaštite neosiguranih osoba i sl.

*Pomoć za osposobljavanje i privređivanje* podrazumijeva osnivanje radnog odnosa osoba u stanju socijalne potrebe angažiranjem centra za socijalni rad na pripremi zajednice da prihvati tu osobu kao i rad s osobom u cilju uspješnog uključivanja u zajednicu. Ovdje se podrazumijeva i osnivanje radnog odnosa na određeno vrijeme u «kućnoj» radinosti, različitim servisima i sl., kao i zapošljavanje invalidnih osoba u zaštitnim radionicama.

*Pomoć za rehabilitaciju* podrazumijeva novčana davanja u cilju uključivanja na osposobljavanje za rad ili profesionalnu rehabilitaciju djece i mladeži ometene u psihičkom ili tjelesnom razvitku kao i odraslih invalidnih osoba, a na teret sredstava centara za socijalni rad odnosno službi socijalne skrbi.

## **Novčane pomoći**

*Stalna novčana pomoć* podrazumijeva novčana davanja koja osiguravaju centri za socijalni rad ili općinski centri za socijalni rad, a koja su jedini ili dopunski izvor sredstava za zadovoljavanje životnih potreba osoba u stanju socijalnih potreba.

*Jednokratna novčana pomoć* isplaćuje se najviše dva puta godišnje za kućanstvo i ne može iznositi više od ukupno pet iznosa novčane pomoći utvrđene zakonom, izuzetno u slučajevima kada je zbog osobitih

of education minor beneficiaries that have left school or have not been covered by regular education as well as including mentally and physically handicapped children and youth in special education, i.e. vocational training.

*Other measures* are cases of rendering advice about problems in upbringing and development of children, providing summer vacations and rehabilitation financed from social welfare funds, covering health insurance of uninsured persons, etc.

*Assistance in vocational training and employment* is considered engagement of social welfare centre in employment of beneficiary in an enterprise as well as in preparing those persons for new working environment. Here is included employment on temporary basis «at home», various services, etc., as well as employing disabled in protective workshops.

*Allowance for rehabilitation* is money for vocational training or professional rehabilitation of mentally and physically handicapped children and youth and disabled adults, given from funds of social welfare centres or social welfare services.

## **Allowances**

*Permanent allowance* is money provided by social welfare centres or municipal social welfare services, which is the only or supplemental financial resource for persons in need of social welfare.

*One - off allowance* is paid twice a year at most for a household. This allowance cannot exceed the amount of five allowances in total determined in law, except for cases requiring greater amount due to special

okolnosti potrebno odobriti veći iznos o čemu odlučuje rukovoditelj organa koji utvrđuje ovo pravo.

*Dodatak za tuđu njegu* podrazumijeva poseban novčani dodatak osobama kojima je potrebna pomoć druge osobe u zadovoljavanju njihovih egzistencijalnih potreba.

## **OSTALI OBLICI SKRBI I USLUGA**

*Razvrstavanje na temelju dijagnoza* podrazumijeva slučajeve kada nadležni organ izvrši razvrstavanje djece ometene u psihičkom i tjelesnom razvitku.

*Pomoć u ostvarivanju određenih prava* podrazumijeva slučajeve pomoći oko reguliranja mirovine, alimentacije i dr.

*Pomoć u rješavanju pitanja djece razvedenih ili roditelja u brakorazvodnoj parnici* podrazumijeva davanje mišljenja i prijedloga sudu kome treba povjeriti dijete na čuvanje i odgoj nakon razvoda braka roditelja u slučajevima kada se roditelji nisu sporazumjeli.

*Njega i druge usluge u stanu* podrazumijevaju pružanje zdravstvene njege u kući teže i teško kronično bolesnim, nepokretnim i drugim bolesnim osobama, bez obzira na njihovo materijalno stanje.

*Pomoć u sređivanju bračnih i obiteljskih odnosa* po pravilu se sprovodi primjenom metoda savjetovanja i davanja mišljenja stručnih socio-psihologijskog, pedagogijskog, pravnog ili drugog karaktera. Ovdje pripadaju i pitanja reguliranja viđanja djece s roditeljima za vrijeme i poslije razvoda braka, pitanja priznavanja očinstva i sl.

*Ostale usluge* su stručna mišljenja, pisana izvješća, posredovanja kod drugih ustanova

circumstances. The decision on the approval of such payment is made by an executive of the body that determines this right.

*Allowance for care rendered by other person* is a special allowance for persons requiring assistance of other person for satisfying their existential needs.

## **OTHER FORMS OF PROTECTION AND SERVICES**

Classification on the basis of diagnoses is categorisation of mentally and physically handicapped children done by organization in charge.

Assistance in exercising certain rights refers to cases of rendering help for regulating pension, alimentation, etc.

Assistance in solving issues concerning children of divorced parents or parents in divorce procedure is considered giving opinions and suggestions to court about custody of children after divorce in cases when parents have reached no agreement.

Care and other services rendered in home refer to rendering health care in home to severely and less severely chronically diseased, immobile and otherwise diseased persons, irrespective of their financial condition.

Assistance in normalizing marriage and family relationship is done, regularly, through advisory methods and giving professional opinions of social, psychological, pedagogical, legal or other character. Here are included issues about parent's rights to visit children during and after the divorce, child recognition, and the like.

Other services are professional expertise, written reports and mediation at other



u cilju osiguravanja odgovarajuće pomoći kao i pomoći za ishranu, odjeću, obuću, ogrjev i sl.

## **USTANOVE SOCIJALNE SKRBI**

*Domovi za djecu i mladež osiguravaju privremeno ili trajno zbrinjavanje, ishranu, zdravstvenu zaštitu, odgajanje, obrazovanje i trajno osposobljavanje djece i mladeži kojoj je potreban ovakav oblik skrbi.*

*Ustanove socijalne skrbi za invalidnu djecu i mladež ometenu u razvoju osiguravaju u ovisnosti od vrste i stupnja oštećenja, privremeni ili trajni smještaj, njegu, odgajanje, obrazovanje i osposobljavanje za rad pod osobitim uvjetima.*

*Ustanove socijalne skrbi za odrasle invalidne osobe su poduzeća za profesionalnu rehabilitaciju koja osiguravaju stručno osposobljavanje i zapošljavanje osoba s umanjenim radnim sposobnostima. Zaposleni u ovim poduzećima su invalidne osobe koje mogu raditi u poduzeću ili kod kuće i rehabilitanti – invalidne osobe koje se nalaze na osposobljavanju ili prekvalifikaciji.*

*Ustanove socijalne skrbi za odrasle osobe su domovi za umirovljenike i druge odrasle osobe i socijalno-gerijatrijski centri koji osiguravaju privremeni ili trajni smještaj, ishranu, njegu i zdravstvenu zaštitu odraslim osobama koje su bez sredstava za život, bez obiteljskog staranja, ometena u psihičkom ili tjelesnom razvitku i uslijed toga nesposobne za samostalan život, a i bez uvjeta da im se osigura odgovarajuća skrb i pomoć u vlastitoj obitelji.*

institution in order to provide appropriate help as well as assistance in providing food, clothes, footwear, fuel, etc.

## ***SOCIAL WELFARE INSTITUTIONS***

*Institutions for children and adolescent provide temporary or permanent care, food, health care, upbringing, education and vocational training for children and youth in need of such a form of protection.*

*Social welfare institutions for mentally and physically handicapped children and adolescents provide depending on the type and extent of disability, temporary or permanent accommodation, care, upbringing, education and training for work under special conditions.*

*Social welfare institutions for adult disabled persons are enterprises for professional rehabilitation which provide vocational training and employment of persons with impaired working capability. Employees of such enterprises are handicapped persons able to work in enterprises or at home and persons on rehabilitation – disabled persons attending vocational training or training for new qualification.*

*Social welfare institutions for adult persons are homes for pensioners and other adult persons and social-geriatric centres which provide temporary or permanent accommodation, food, nursing and health care for adult persons without financial resources or family care, mentally or physically disabled and therefore incapable for independent life and without conditions required for help being rendered in their own family.*



**KORISNICI, OBLICI, MJERE I USLUGE SOCIJALNE SKRBI**

*BENEFICIARIES, FORMS, MEASURES AND SERVICES OF SOCIAL  
WELFARE*



## STATISTIKA SOCIJALNE SKRBI SOCIAL WELFARE STATISTICS

<b>1. Broj centara za socijalnu skrb 2002 - 2007 godine</b> <i>Number of social welfare centres from 2002- 2007</i>				
	FBiH	RS	DB	BiH
2002	71	43	-	<b>114</b>
2003	71	43	-	<b>114</b>
2004	72	43	-	<b>115</b>
2005	72	44	-	<b>116</b>
2006	71	45	-	<b>116</b>
2007	71	45	-	<b>116</b>

\* U Brčko Distriktu ne postoji centar za socijalnu skrb, samo jedan pododjel u okviru odjela za zdravstvo.

\* Social welfare center doesn't exist in Brcko Distrikt, there is only one department for Social welfare within Health Center of Brcko Distrikt.

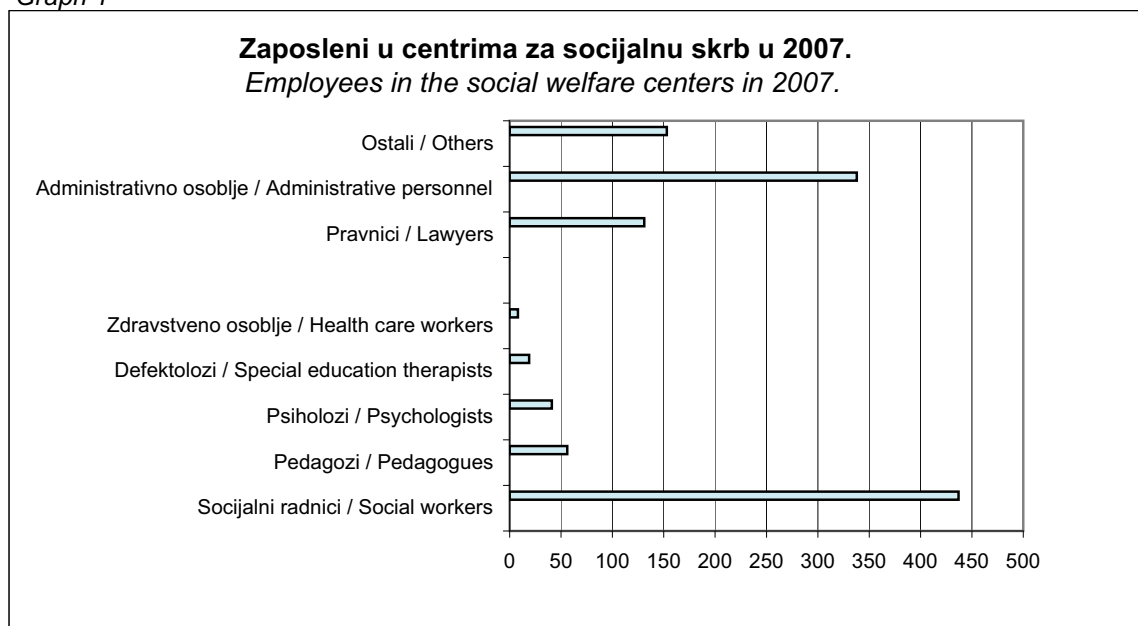
## 2. Obradeni slučajevi - intervencije u centru *Treatments rendered in centre*

	<b>Broj slučajeva obrađenih u centru</b> <i>Number of cases handled in centre</i>			<b>Broj intervencija pruženih u centru</b> <i>Number of treatments rendered in centre</i>		
	<b>svega</b> <i>all</i>	muški <i>male</i>	ženski <i>female</i>	<b>svega</b> <i>all</i>	muški <i>male</i>	ženski <i>female</i>
2002	<b>450.292</b>	240.914	209.378	<b>366.009</b>	202.330	163.679
2003	<b>460.962</b>	238.047	222.915	<b>397.136</b>	227.905	169.231
2004	<b>521.108</b>	281.970	239.138	<b>421.860</b>	256.365	165.495
2005	<b>484.957</b>	234.855	250.102	<b>444.244</b>	287.956	156.288
2006	<b>532.666</b>	260.485	272.181	<b>536.177</b>	346.854	189.323
2007	<b>582.370</b>	293.111	289.259	<b>583.333</b>	305.374	277.959

**3. Zaposleni u centrima za socijalnu skrb**  
*Employees in the social welfare centres*

	2002	2003	2004	2005	2006	2007	
<b>UKUPNO</b>	<b>972</b>	<b>1.030</b>	<b>1.051</b>	<b>1.063</b>	<b>1.087</b>	<b>1.183</b>	<b>TOTAL</b>
muški	253	283	267	282	277	305	male
ženski	719	747	784	781	810	878	female
<b>Socijalni radnici</b>	350	370	390	403	402	437	<i>Social workers</i>
<b>Pedagozi</b>	43	46	42	45	43	56	<i>Pedagogues</i>
<b>Psiholozi</b>	19	25	27	29	26	41	<i>Psychologists</i>
<b>Defektolozi</b>	14	19	20	17	25	19	<i>Special education therapists</i>
<b>Zdravstveno osoblje</b>	7	5	5	5	7	8	<i>Health care workers</i>
<b>Pravnici</b>	103	106	106	106	114	131	<i>Lawyers</i>
<b>Administrativno osoblje</b>	298	324	321	323	330	338	<i>Administrative personnel</i>
<b>Ostali</b>	142	139	144	139	140	153	<i>Others</i>

**Grafik 1**  
*Graph 1*



**MALOLJETNI KORISNICI SOCIJALNE SKRBI**  
**MINOR BENEFICIARIES OF SOCIAL WELFARE**

**4. Korisnici po kategorijama i spolu**  
*Beneficiaries by categories and sex*

<b>Kategorija korisnika</b> <i>Category of beneficiary</i>		<b>2002</b>	<b>2003</b>	<b>2004</b>	<b>2005</b>	<b>2006</b>	<b>2007</b>	
<b>UKUPNO</b> <i>TOTAL</i>	<b>svoga</b>	<b>121.179</b>	<b>129.519</b>	<b>133.737</b>	<b>144.027</b>	<b>150.851</b>	<b>151.854</b>	<b>all</b>
	muški	63.442	69.381	72.030	78.004	80.038	80.482	male
	ženski	57.737	60.138	61.707	66.023	70.813	71.372	female
<b>Ugroženi obiteljskim okolnostima</b> <i>Disadvantage by family situation</i>	<b>svoga</b>	<b>53.389</b>	<b>55.875</b>	<b>55.298</b>	<b>57.078</b>	<b>60.955</b>	<b>63.153</b>	<b>all</b>
	muški	25.665	28.183	27.720	28.980	31.630	32.659	male
	ženski	27.724	27.692	27.578	28.098	29.325	30.494	female
Djeca bez oba roditelja <i>Children without both parents</i>	<b>svoga</b>	<b>1.543</b>	<b>1.465</b>	<b>1.173</b>	<b>1.325</b>	<b>1.312</b>	<b>1.224</b>	<b>all</b>
	muški	803	735	596	656	655	586	male
	ženski	740	730	577	669	657	638	female
Djeca nepoznatih roditelja <i>Children of unknown parents</i>	<b>svoga</b>	<b>128</b>	<b>134</b>	<b>119</b>	<b>103</b>	<b>103</b>	<b>88</b>	<b>all</b>
	muški	63	69	64	58	61	52	male
	ženski	65	65	55	45	42	36	female
Djeca napuštena od roditelja <i>Children abandoned by parents</i>	<b>svoga</b>	<b>845</b>	<b>820</b>	<b>902</b>	<b>818</b>	<b>783</b>	<b>792</b>	<b>all</b>
	muški	420	388	492	410	404	411	male
	ženski	425	432	410	408	397	381	female
Djeca roditelja spriječenih da obavljaju roditeljsku odgovornost <i>Children of parents prevented from performing parental duty</i>	<b>svoga</b>	<b>650</b>	<b>692</b>	<b>638</b>	<b>682</b>	<b>726</b>	<b>723</b>	<b>all</b>
	muški	332	381	350	372	401	379	male
	ženski	318	311	288	310	325	344	female
Djeca roditelja lišenih roditeljskih prava <i>Children of parents deprived of parental rights</i>	<b>svoga</b>	<b>1.495</b>	<b>410</b>	<b>59</b>	<b>223</b>	<b>61</b>	<b>65</b>	<b>all</b>
	muški	494	215	35	115	30	34	male
	ženski	1.001	195	24	108	31	31	female
Djeca roditelja koja nemaju dovoljno prihoda <i>Children of parents who have not enough income for care</i>	<b>svoga</b>	<b>39.765</b>	<b>42.684</b>	<b>41.921</b>	<b>42.586</b>	<b>46.318</b>	<b>47.658</b>	<b>all</b>
	muški	18.565	20.861	20.426	20.952	23.712	24.416	male
	ženski	21.200	21.823	21.495	21.634	22.606	23.242	female
Djeca roditelja koji zanemaruju ili zlostavljaju djecu <i>Parents neglect or molest children</i>	<b>svoga</b>	<b>1.140</b>	<b>1.173</b>	<b>1.714</b>	<b>1.873</b>	<b>1.913</b>	<b>2.085</b>	<b>all</b>
	muški	548	604	896	971	985	1.059	male
	ženski	592	569	818	902	928	1.026	female

**4. Korisnici po kategorijama i spolu**  
*Beneficiaries by categories and sex*

<b>Kategorija korisnika</b> <i>Category of beneficiary</i>		<b>2002</b>	<b>2003</b>	<b>2004</b>	<b>2005</b>	<b>2006</b>	<b>2007</b>	
Djeca čiji je razvoj ometen obiteljskim okolnostima <i>Children whose development is hindeed by family situation</i>	<b>svega</b>	<b>4.681</b>	<b>5.030</b>	<b>5.276</b>	<b>5.690</b>	<b>6.172</b>	<b>6.896</b>	<b>all</b>
	muški	2.149	2.432	2.403	2.779	3.041	3.296	male
	ženski	2.532	2.598	2.873	2.911	3.131	3.600	female
Odgojno zanemarena i zapuštena djeca <i>Socially neglected and maladjusted children</i>	<b>svega</b>	<b>3.142</b>	<b>3.467</b>	<b>3.496</b>	<b>3.778</b>	<b>3.549</b>	<b>3.622</b>	<b>all</b>
	muški	2.291	2.498	2.458	2.667	2.341	2.426	male
	ženski	851	969	1.038	1.111	1.208	1.196	female
<b>Osobe sa smetnjama u psihičkom i tjelesnom razvitku</b> <i>Mentally and physically handicapped persons</i>	<b>svega</b>	<b>8.687</b>	<b>9.459</b>	<b>9.017</b>	<b>10.152</b>	<b>11.111</b>	<b>11.793</b>	<b>all</b>
	muški	5.027	5.455	5.283	6.053	6.206	6.307	male
	ženski	3.660	4.004	3.734	4.099	4.905	5.486	female
S oštećenjem vida <i>With visual impairment</i>	<b>svega</b>	<b>681</b>	<b>688</b>	<b>610</b>	<b>697</b>	<b>767</b>	<b>789</b>	<b>all</b>
	muški	345	363	317	362	399	421	male
	ženski	336	325	293	335	368	368	female
S oštećenjem sluha <i>With visual impairment</i>	<b>svega</b>	<b>578</b>	<b>646</b>	<b>590</b>	<b>634</b>	<b>708</b>	<b>788</b>	<b>all</b>
	muški	329	335	327	347	376	409	male
	ženski	249	311	263	287	332	379	female
S poremećajima u glasu i govoru <i>With voice and speech impediments</i>	<b>svega</b>	<b>549</b>	<b>595</b>	<b>642</b>	<b>816</b>	<b>809</b>	<b>886</b>	<b>all</b>
	muški	309	349	381	537	461	472	male
	ženski	240	246	261	279	348	414	female
Tjelesno invalidne osobe <i>Physically disabled persons</i>	<b>svega</b>	<b>1.147</b>	<b>1.245</b>	<b>1.278</b>	<b>1.426</b>	<b>1.750</b>	<b>1.948</b>	<b>all</b>
	muški	664	718	768	826	1.012	1.014	male
	ženski	483	527	510	600	738	934	female
Mentalno zaostale osobe <i>Mentally disabled persons</i>	<b>svega</b>	<b>3.407</b>	<b>3.551</b>	<b>3.421</b>	<b>3.465</b>	<b>4.182</b>	<b>4.343</b>	<b>all</b>
	muški	1.961	2.043	1.991	2.056	2.304	2.396	male
	ženski	1.446	1.508	1.430	1.409	1.878	1.947	female
S poremećajima u ponašanju i ličnosti <i>With behavioural and personal breakdown</i>	<b>svega</b>	<b>797</b>	<b>963</b>	<b>729</b>	<b>992</b>	<b>1.089</b>	<b>1.196</b>	<b>all</b>
	muški	520	599	448	609	626	698	male
	ženski	277	364	281	383	463	498	female



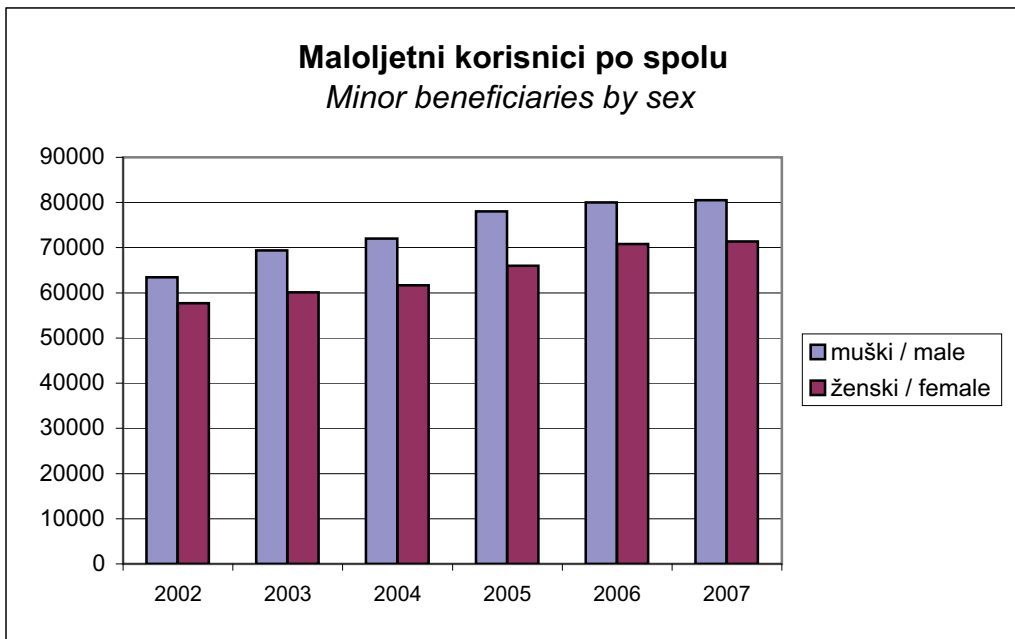
**4. Korisnici po kategorijama i spolu**  
*Beneficiaries by categories and sex*

<b>Kategorija korisnika</b> <i>Category of beneficiary</i>	<b>2002</b>	<b>2003</b>	<b>2004</b>	<b>2005</b>	<b>2006</b>	<b>2007</b>		
S kombiniranim smetnjama <i>With combined handicap</i>	<b>svoga</b> muški ženski	<b>1.528</b> 899 629	<b>1.771</b> 1.048 723	<b>1.747</b> 1.051 696	<b>2.122</b> 1.316 806	<b>2.545</b> 1.465 1.080	<b>2.758</b> 1.449 1.309	<b>all</b> <i>male</i> <i>female</i>
<b>Osobe društveno neprihvatljivog ponašanja</b> <i>Persons with social unacceptable behavior</i>	<b>svoga</b> muški ženski	<b>4.681</b> 3.539 1.142	<b>5.213</b> 3.917 1.296	<b>5.301</b> 4.127 1.174	<b>6.369</b> 4.926 1.443	<b>6.938</b> 5.276 1.662	<b>7.002</b> 5.236 1.766	<b>all</b> <i>male</i> <i>female</i>
Sklone skitnji <i>Inclined to vagrancy</i>	<b>svoga</b> muški ženski	<b>743</b> 492 251	<b>843</b> 529 314	<b>872</b> 533 339	<b>925</b> 615 310	<b>1.024</b> 708 316	<b>999</b> 625 374	<b>all</b> <i>male</i> <i>female</i>
Sklone prosjačenju <i>Inclined to begging</i>	<b>svoga</b> muški ženski	<b>674</b> 374 300	<b>802</b> 418 384	<b>715</b> 402 313	<b>872</b> 477 395	<b>1.008</b> 536 472	<b>1.024</b> 528 496	<b>all</b> <i>male</i> <i>female</i>
Sklone prostituciji <i>Inclined to prostitution</i>	<b>svoga</b> muški ženski	<b>179</b> 52 127	<b>137</b> 28 109	<b>150</b> 25 125	<b>269</b> 143 126	<b>197</b> 21 176	<b>237</b> 74 163	<b>all</b> <i>male</i> <i>female</i>
Sklone vršenju krivičnih djela <i>Inclined to committing criminal acts</i>	<b>svoga</b> muški ženski	<b>2.374</b> 2.068 306	<b>2.700</b> 2.367 333	<b>2.800</b> 2.556 244	<b>3.555</b> 3.138 417	<b>3.756</b> 3.272 484	<b>3.911</b> 3.387 524	<b>all</b> <i>male</i> <i>female</i>
Alkoholičari <i>Alcoholics</i>	<b>svoga</b> muški ženski	<b>301</b> 226 75	<b>375</b> 294 81	<b>374</b> 297 77	<b>372</b> 280 92	<b>505</b> 424 81	<b>369</b> 303 66	<b>all</b> <i>male</i> <i>female</i>
Narkomani <i>Drug addicts</i>	<b>svoga</b> muški ženski	<b>300</b> 217 83	<b>356</b> 281 75	<b>390</b> 314 76	<b>376</b> 273 103	<b>448</b> 315 133	<b>462</b> 319 143	<b>all</b> <i>male</i> <i>female</i>
<b>Psihički bolesne osobe</b> <i>Mentally ill persons</i>	<b>svoga</b> muški ženski	<b>390</b> 228 162	<b>334</b> 189 145	<b>335</b> 198 137	<b>328</b> 195 133	<b>386</b> 228 158	<b>374</b> 216 158	<b>all</b> <i>male</i> <i>female</i>
Sklone različitim psihičkim oboljenjima <i>Inclined to different mentally diseases</i>	<b>svoga</b> muški ženski	<b>387</b> 225 162	<b>334</b> 189 145	<b>335</b> 198 137	<b>328</b> 195 133	<b>386</b> 228 158	<b>374</b> 216 158	<b>all</b> <i>male</i> <i>female</i>

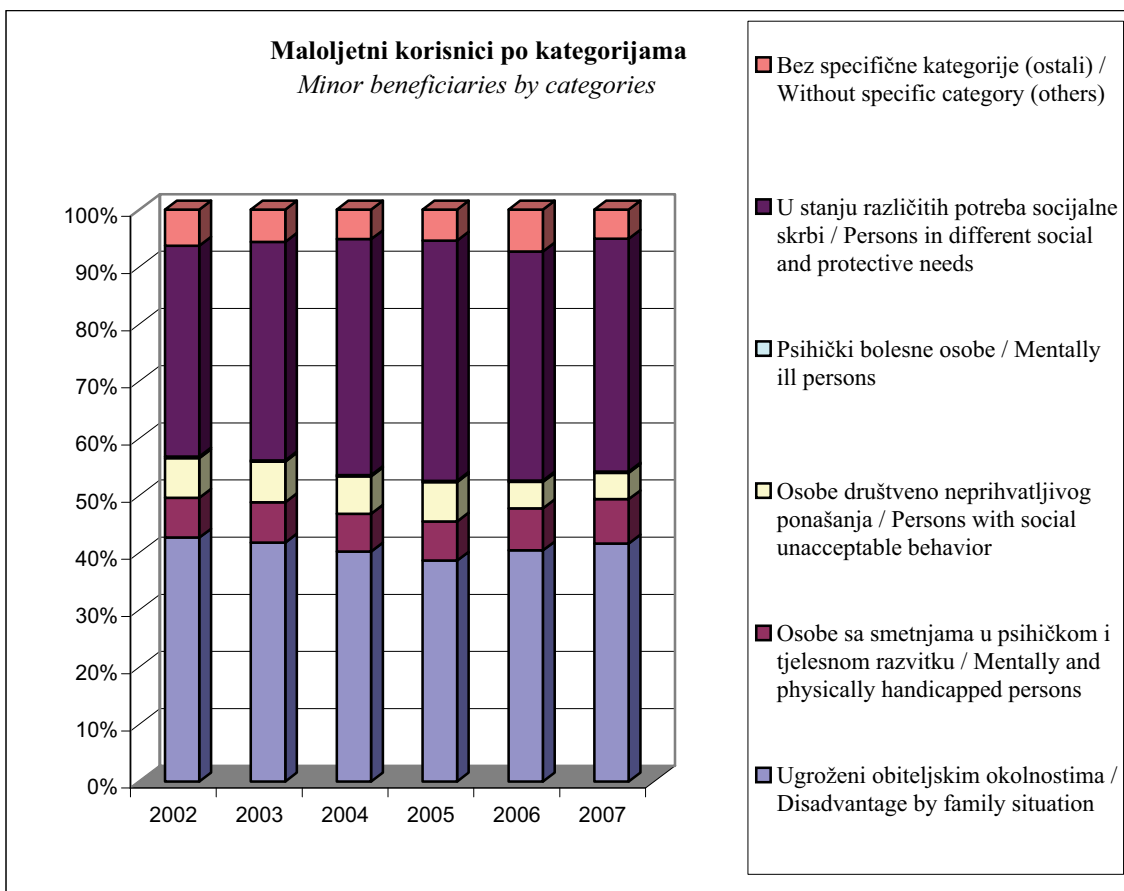
**4. Korisnici po kategorijama i spolu**  
*Beneficiaries by categories and sex*

<b>Kategorija korisnika</b> <i>Category of beneficiary</i>		<b>2002</b>	<b>2003</b>	<b>2004</b>	<b>2005</b>	<b>2006</b>	<b>2007</b>	
<b>U stanju različitih potreba socijalne skrbi</b> <i>Persons in different social and protective needs</i>	<b>svoga</b>	<b>46.136</b>	<b>51.086</b>	<b>56.696</b>	<b>62.104</b>	<b>60.427</b>	<b>61.860</b>	<b>all</b>
	muški	25.023	27.881	31.690	33.598	31.324	32.215	male
	ženski	21.113	23.205	25.006	28.506	29.103	29.645	female
S teškim stambenim prilikama <i>With serious housing problems</i>	<b>svoga</b>	<b>6.343</b>	<b>5.761</b>	<b>5.866</b>	<b>7.252</b>	<b>4.442</b>	<b>5.370</b>	<b>all</b>
	muški	3.367	2.820	3.009	3.707	2.380	2.511	male
	ženski	2.976	2.941	2.857	3.545	2.062	2.859	female
Vratile se s izdržavanja kazne <i>Returned from imprisonment</i>	<b>svoga</b>	<b>11</b>	<b>175</b>	<b>186</b>	<b>19</b>	<b>14</b>	<b>15</b>	<b>all</b>
	muški	10	164	172	15	13	7	male
	ženski	1	11	14	4	1	8	female
Stradale u elementarnim nepogodama <i>Suffered in natural disasters</i>	<b>svoga</b>	<b>83</b>	<b>120</b>	<b>150</b>	<b>57</b>	<b>137</b>	<b>90</b>	<b>all</b>
	muški	44	60	58	30	65	46	male
	ženski	39	60	92	27	72	44	female
Civilne žrtve rata <i>Civil victims of war</i>	<b>svoga</b>	<b>669</b>	<b>606</b>	<b>664</b>	<b>682</b>	<b>645</b>	<b>613</b>	<b>all</b>
	muški	401	353	378	351	356	340	male
	ženski	268	253	286	331	289	273	female
Članovi obitelji civilnih žrtava rata <i>Members of family of civil victims of war</i>	<b>svoga</b>	<b>1.387</b>	<b>1.063</b>	<b>668</b>	<b>896</b>	<b>1.962</b>	<b>681</b>	<b>all</b>
	muški	762	558	343	496	1.098	396	male
	ženski	625	505	325	400	864	285	female
Kojima su potrebne usluge socijalnog rada <i>Who need services of social welfare</i>	<b>svoga</b>	<b>37.643</b>	<b>43.361</b>	<b>49.162</b>	<b>53.198</b>	<b>53.227</b>	<b>55.091</b>	<b>all</b>
	muški	20.439	23.926	27.730	28.999	27.412	28.915	male
	ženski	17.204	19.435	21.432	24.199	25.815	26.176	female
<b>Bez specifične kategorije (ostali)</b> <i>Without specific category (others)</i>	<b>svoga</b>	<b>7.896</b>	<b>7.552</b>	<b>7.090</b>	<b>7.996</b>	<b>11.034</b>	<b>7.672</b>	<b>all</b>
	muški	3.960	3.756	3.012	4.252	5.374	3.849	male
	ženski	3.936	3.796	4.078	3.744	5.660	3.823	female

**Grafik 2**  
Graph 2



**Grafik 3**  
Graph 3



**PUNOLJETNI KORISNICI SOCIJALNE SKRBI**  
**ADULT BENEFICIARIES OF SOCIAL WELFARE**

**5. Korisnici po kategorijama i spolu**  
*Beneficiaries by category and sex*

<b>Kategorija korisnika</b> <i>Category of beneficiary</i>		<b>2002</b>	<b>2003</b>	<b>2004</b>	<b>2005</b>	<b>2006</b>	<b>2007</b>	
<b>UKUPNO</b> <i>TOTAL</i>	<b>svoga</b>	<b>423.324</b>	<b>461.580</b>	<b>480.366</b>	<b>453.808</b>	<b>469.012</b>	<b>473.357</b>	<b>all</b>
	muški	214.923	238.285	217.203	219.265	225.587	224.955	male
	ženski	208.401	223.295	263.163	234.543	243.425	248.402	female
<b>Korisnici subvencioniranih troškova</b> <i>Beneficiaries of subventions</i>	<b>svoga</b>	<b>47.399</b>	<b>43.481</b>	<b>27.869</b>	<b>24.314</b>	<b>22.624</b>	<b>15.691</b>	<b>all</b>
	muški	27.473	25.311	9.645	13.271	13.038	7.983	male
	ženski	19.926	18.170	18.224	11.043	9.586	7.708	female
Subvencionirani troškovi stanarine, grijanja, sprovoda <i>Subventions for rents, heating, funeral</i>	<b>svoga</b>	<b>47.399</b>	<b>43.653</b>	<b>27.869</b>	<b>24.314</b>	<b>22.624</b>	<b>15.691</b>	<b>all</b>
	muški	27.473	25.483	9.645	13.271	13.038	7.983	male
	ženski	19.926	18.170	18.224	11.043	9.586	7.708	female
<b>Osobe sa smetnjama u psihičkom i tjelesnom razvitku</b> <i>Mentaly and psysically handicapped persons</i>	<b>svoga</b>	<b>20.846</b>	<b>22.021</b>	<b>22.544</b>	<b>23.980</b>	<b>30.514</b>	<b>37.917</b>	<b>all</b>
	muški	11.478	12.258	12.236	12.826	16.172	19.544	male
	ženski	9.368	9.763	10.308	11.154	14.342	18.373	female
S oštećenjem vida <i>With visual impairment</i>	<b>svoga</b>	<b>2.281</b>	<b>2.501</b>	<b>2.704</b>	<b>2.789</b>	<b>3.151</b>	<b>3.688</b>	<b>all</b>
	muški	1.172	1.240	1.434	1.490	1.595	1.871	male
	ženski	1.109	1.261	1.270	1.299	1.556	1.817	female
S oštećenjem sluha <i>With hearing impairment</i>	<b>svoga</b>	<b>1.732</b>	<b>1.956</b>	<b>2.011</b>	<b>2.124</b>	<b>2.569</b>	<b>2.894</b>	<b>all</b>
	muški	956	1.080	1.107	1.190	1.299	1.518	male
	ženski	776	876	904	934	1.270	1.376	female
S poremećajima u glasu i govoru <i>With voice and speech impediments</i>	<b>svoga</b>	<b>911</b>	<b>960</b>	<b>864</b>	<b>850</b>	<b>991</b>	<b>1.295</b>	<b>all</b>
	muški	506	543	439	461	538	690	male
	ženski	405	417	425	389	453	605	female
Tjelesno invalidne osobe <i>Psysically disabled persons</i>	<b>svoga</b>	<b>4.254</b>	<b>4.956</b>	<b>5.200</b>	<b>6.422</b>	<b>9.492</b>	<b>13.382</b>	<b>all</b>
	muški	2.385	2.810	2.846	3.447	4.943	6.459	male
	ženski	1.868	2.146	2.354	2.975	4.549	6.923	female
Mentalno nedovoljno razvijene osobe <i>Mentally disabled persons</i>	<b>svoga</b>	<b>7.701</b>	<b>8.207</b>	<b>8.359</b>	<b>8.001</b>	<b>9.699</b>	<b>11.107</b>	<b>all</b>
	muški	4.269	4.768	4.591	4.183	5.326	6.116	male
	ženski	3.432	3.439	3.768	3.818	4.373	4.991	female
S poremećajima u ponašanju i ličnosti <i>With behavioural and personality disorders</i>	<b>svoga</b>	<b>1.440</b>	<b>1.474</b>	<b>1.396</b>	<b>1.432</b>	<b>1.453</b>	<b>1.510</b>	<b>all</b>
	muški	904	905	887	857	875	864	male
	ženski	536	569	509	575	578	646	female
S kombiniranim smetnjama <i>With combined handicaps</i>	<b>svoga</b>	<b>2.527</b>	<b>2.743</b>	<b>2.931</b>	<b>3.201</b>	<b>3.960</b>	<b>4.971</b>	<b>all</b>
	muški	1.286	1.345	1.494	1.657	2.051	2.503	male
	ženski	1.241	1.398	1.437	1.544	1.909	2.414	female

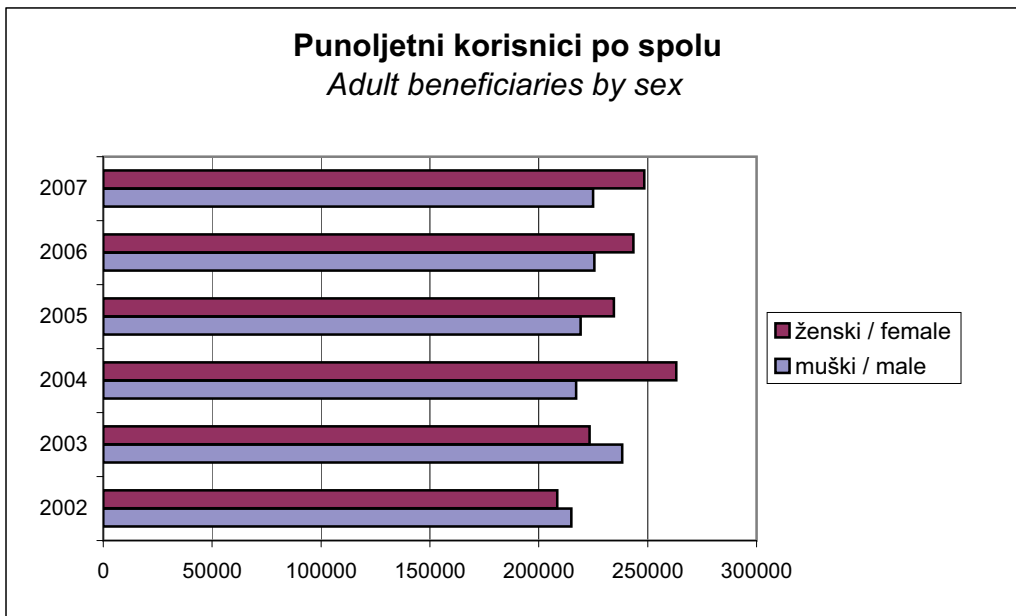
**5. Korisnici po kategorijama i spolu**  
*Beneficiaries by category and sex*

<b>Kategorija korisnika</b> <i>Category of beneficiary</i>	<b>2002</b>	<b>2003</b>	<b>2004</b>	<b>2005</b>	<b>2006</b>	<b>2007</b>		
<b>Osobe društveno neprihvatljivog ponašanja</b> <i>Persons with socially unacceptable behaviour</i>	<b>svoga</b>	<b>5.760</b>	<b>6.639</b>	<b>6.248</b>	<b>6.852</b>	<b>7.358</b>	<b>7.344</b>	<b>all</b>
	muški	4.051	4.666	4.499	5.000	5.222	5.212	male
	ženski	1.709	1.973	1.749	1.852	2.136	2.132	female
<b>Sklone skitnji</b> <i>Inclined to vagrancy</i>	<b>svoga</b>	<b>822</b>	<b>1.194</b>	<b>1.058</b>	<b>1.249</b>	<b>973</b>	<b>968</b>	<b>all</b>
	muški	471	602	602	781	559	572	male
	ženski	351	592	456	468	414	396	female
<b>Sklone prosjačenju</b> <i>Inclined to begging</i>	<b>svoga</b>	<b>922</b>	<b>1.207</b>	<b>1.100</b>	<b>1.141</b>	<b>1.176</b>	<b>1.110</b>	<b>all</b>
	muški	442	609	508	518	506	524	male
	ženski	480	598	592	623	670	586	female
<b>Sklone prostituciji</b> <i>Inclined to prostitution</i>	<b>svoga</b>	<b>295</b>	<b>219</b>	<b>185</b>	<b>555</b>	<b>297</b>	<b>293</b>	<b>all</b>
	muški	30	22	21	350	55	27	male
	ženski	265	197	164	205	242	266	female
<b>Sklone vršenju krivičnih djela</b> <i>Inclined to committing criminal acts</i>	<b>svoga</b>	<b>975</b>	<b>1.201</b>	<b>1.264</b>	<b>1.081</b>	<b>1.711</b>	<b>1.629</b>	<b>all</b>
	muški	790	1.035	1.134	954	1.510	1.376	male
	ženski	185	166	130	127	201	253	female
<b>Alkoholičari</b> <i>Alcoholics</i>	<b>svoga</b>	<b>2.191</b>	<b>2.290</b>	<b>2.243</b>	<b>2.314</b>	<b>2.573</b>	<b>2.605</b>	<b>all</b>
	muški	1.889	1.955	1.915	1.974	2.147	2.175	male
	ženski	302	335	328	340	426	430	female
<b>Narkomani</b> <i>Drug addicts</i>	<b>svoga</b>	<b>555</b>	<b>528</b>	<b>398</b>	<b>487</b>	<b>628</b>	<b>739</b>	<b>all</b>
	muški	429	443	319	399	445	538	male
	ženski	126	85	79	88	183	201	female
<b>Psihički bolesne osobe</b> <i>Mentally ill persons</i>	<b>svoga</b>	<b>3.565</b>	<b>4.437</b>	<b>4.355</b>	<b>5.329</b>	<b>5.651</b>	<b>5.974</b>	<b>all</b>
	muški	1.880	2.403	2.324	2.816	3.080	3.306	male
	ženski	1.685	2.034	2.031	2.513	2.571	2.668	female
<b>Sklone različitim psihičkim oboljenjima</b> <i>Inclined to different mentally diseases</i>	<b>svoga</b>	<b>3.565</b>	<b>4.437</b>	<b>4.355</b>	<b>5.329</b>	<b>5.651</b>	<b>5.974</b>	<b>all</b>
	muški	1.880	2.403	2.324	2.816	3.080	3.306	male
	ženski	1.685	2.034	2.031	2.513	2.571	2.668	female
<b>Osobe koje nemaju dovoljno prihoda za uzdržavanje</b> <i>Persons not having a sufficient income to support themselves</i>	<b>svoga</b>	<b>168.660</b>	<b>179.158</b>	<b>173.931</b>	<b>169.322</b>	<b>174.339</b>	<b>175.430</b>	<b>all</b>
	muški	82.902	91.468	75.673	81.344	82.807	84.230	male
	ženski	85.758	87.690	98.258	87.978	91.532	91.200	female
<b>Materijalno neobezbjeđene i za rad nesposobne osobe</b> <i>Financially unprovided persons and persons unable to work</i>	<b>svoga</b>	<b>31.936</b>	<b>36.102</b>	<b>31.704</b>	<b>41.094</b>	<b>40.737</b>	<b>40.111</b>	<b>all</b>
	muški	14.493	19.704	13.484	20.108	19.394	18.846	male
	ženski	17.443	16.398	18.220	20.986	21.343	21.265	female
<b>Stare osobe bez obiteljskog staranja</b> <i>Old persons without family care</i>	<b>svoga</b>	<b>20.756</b>	<b>19.675</b>	<b>18.719</b>	<b>20.926</b>	<b>21.589</b>	<b>21.905</b>	<b>all</b>
	muški	9.151	9.159	8.561	9.369	8.886	10.443	male
	ženski	11.605	10.516	10.158	11.557	12.703	11.462	female

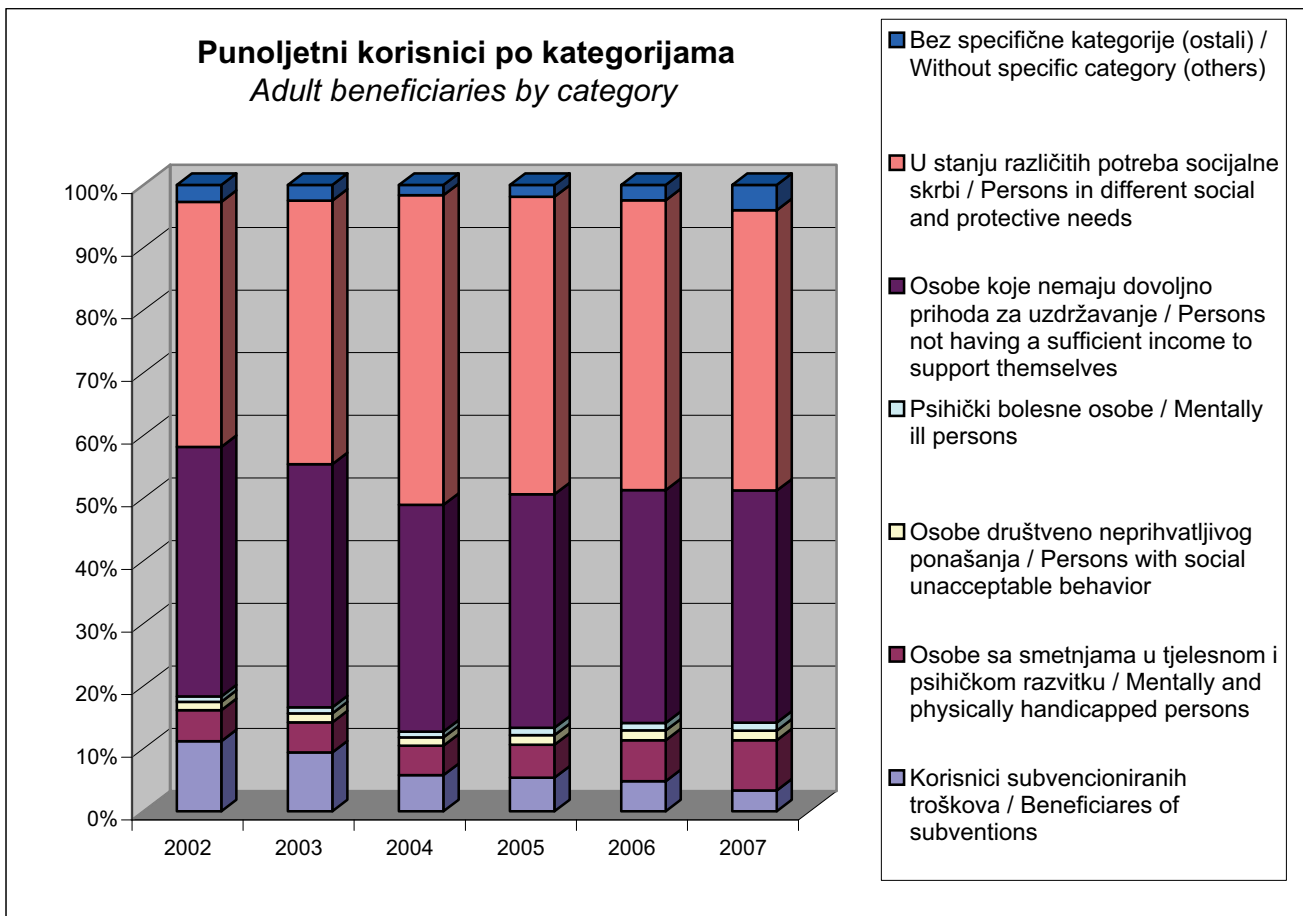
**5. Korisnici po kategorijama i spolu**  
*Beneficiaries by category and sex*

<b>Kategorija korisnika</b> <i>Category of beneficiary</i>	<b>2002</b>	<b>2003</b>	<b>2004</b>	<b>2005</b>	<b>2006</b>	<b>2007</b>		
Kronično bolesne <i>Chronically ill</i>	<b> svega</b>	<b>8.288</b>	<b>8.442</b>	<b>7.983</b>	<b>9.085</b>	<b>10.567</b>	<b>10.008</b>	<b>all</b>
	muški	3.889	4.051	3.652	4.015	5.445	4.747	male
	ženski	4.399	4.391	4.331	5.070	5.122	5.261	female
Osobe kojima je zbog osobitih okolnosti potrebna socijalna skrb <i>Persons requiring social services due to specific circumstances</i>	<b> svega</b>	<b>27.024</b>	<b>33.977</b>	<b>37.446</b>	<b>31.591</b>	<b>28.214</b>	<b>31.630</b>	<b>all</b>
	muški	13.864	18.602	18.420	15.482	13.445	15.638	male
	ženski	13.160	15.375	19.026	16.109	14.769	15.992	female
Ostale osobe u stanju socijalne skrbi <i>Other persons in need of social services</i>	<b> svega</b>	<b>32.489</b>	<b>35.320</b>	<b>59.834</b>	<b>49.638</b>	<b>54.680</b>	<b>58.722</b>	<b>all</b>
	muški	17.484	14.997	23.329	23.852	27.369	29.522	male
	ženski	15.005	20.323	36.505	25.786	27.311	29.200	female
Korisnici humanitarne pomoći <i>Beneficiaries of humanitarian aid</i>	<b> svega</b>	<b>48.167</b>	<b>45.642</b>	<b>18.245</b>	<b>16.988</b>	<b>18.552</b>	<b>13.054</b>	<b>all</b>
	muški	24.021	24.955	8.227	8.518	8.268	5.034	male
	ženski	24.146	20.687	10.018	8.470	10.284	8.020	female
<b>Osobe u stanju različitih potreba socijalne skrbi</b> <i>Persons in different social and protective needs</i>	<b> svega</b>	<b>165.687</b>	<b>194.255</b>	<b>237.568</b>	<b>215.321</b>	<b>217.072</b>	<b>211.809</b>	<b>all</b>
	muški	81.689	96.969	109.042	99.689	99.464	95.425	male
	ženski	83.998	97.286	128.526	115.632	117.608	116.384	female
S teškim stambenim prilikama <i>With serious housing problems</i>	<b> svega</b>	<b>12.376</b>	<b>12.381</b>	<b>11.157</b>	<b>14.055</b>	<b>13.259</b>	<b>12.360</b>	<b>all</b>
	muški	5.737	6.604	6.101	7.183	5.602	5.729	male
	ženski	6.639	5.777	5.056	6.872	7.657	6.631	female
Vratile se s izdržavanja kazne <i>Returned from imprisonment</i>	<b> svega</b>	<b>121</b>	<b>185</b>	<b>187</b>	<b>207</b>	<b>173</b>	<b>190</b>	<b>all</b>
	muški	92	141	169	166	156	174	male
	ženski	29	44	18	41	17	16	female
Stradale u elementarnim nepogodama <i>Suffered in natural disasters</i>	<b> svega</b>	<b>302</b>	<b>234</b>	<b>150</b>	<b>201</b>	<b>334</b>	<b>233</b>	<b>all</b>
	muški	184	135	90	107	157	111	male
	ženski	118	99	60	94	177	122	female
Civilne žrtve rata <i>Civil victims of war</i>	<b> svega</b>	<b>3.767</b>	<b>3.564</b>	<b>3.565</b>	<b>3.532</b>	<b>3.983</b>	<b>3.353</b>	<b>all</b>
	muški	2.059	2.022	1.999	1.981	2.099	1.824	male
	ženski	1.708	1.542	1.566	1.551	1.884	1.529	female
Članovi obitelji civilnih žrtava rata <i>Members of family of civilian victims of war</i>	<b> svega</b>	<b>4.669</b>	<b>4.410</b>	<b>4.399</b>	<b>4.855</b>	<b>4.796</b>	<b>3.720</b>	<b>all</b>
	muški	1.828	1.790	1.785	1.970	2.014	1.397	male
	ženski	2.841	2.620	2.614	2.885	2.782	2.323	female
Kojima su potrebne usluge socijalnog rada <i>In need of social welfare services</i>	<b> svega</b>	<b>144.452</b>	<b>173.481</b>	<b>218.110</b>	<b>192.471</b>	<b>194.527</b>	<b>191.953</b>	<b>all</b>
	muški	71.789	86.277	98.898	88.282	89.436	86.190	male
	ženski	72.663	87.204	119.212	104.189	105.091	105.763	female
<b>Bez specifične kategorije</b> <i>Without specific category</i>	<b> svega</b>	<b>11.407</b>	<b>11.589</b>	<b>7.851</b>	<b>8.690</b>	<b>11.454</b>	<b>19.192</b>	<b>all</b>
	muški	5.450	5.210	3.784	4.319	5.804	9.255	male
	ženski	5.957	6.379	4.067	4.371	5.650	9.937	female

**Grafik 4**  
Graph 4



**Grafik 5**  
Graph 5



**6. Oblici i usluge socijalne skrbi - maloljetni korisnici**  
*Forms and services of social welfare - minor beneficiaries*

<b>Kategorija korisnika</b> <i>Category of beneficiaries</i>	<b>2002</b>	<b>2003</b>	<b>2004</b>	<b>2005</b>	<b>2006</b>	<b>2007</b>
<b>UKUPNO</b> <i>TOTAL</i>	<b>63.649</b>	<b>61.462</b>	<b>111.365</b>	<b>78.309</b>	<b>76.670</b>	<b>79.093</b>
<b>Starateljstvo i usvojenje</b> <i>Guarding and adoption</i>	8.646	5.178	5.404	10.865	5.285	4.650
Starateljstvo <i>Guardianship</i>	4.307	2.684	2.920	2.056	4.044	2.009
Starateljstvo za osobite slučajeve <i>Guardianship for special cases</i>	4.148	2.296	2.283	2.333	1174	2.554
Usvojenje <i>Adoption</i>	191	198	201	82	67	87
<b>Smještaj u ustanove</b> <i>Placement in institutions</i>	2.465	2.340	2.196	2.323	2.276	2.160
U predškolske ustanove <i>In pre-school institutions</i>	98	45	48	142	285	110
U dom za djecu i mladež <i>In institution for children and adolescents</i>	213	157	150	129	160	187
U ustanovu za djecu bez roditeljskog staranja <i>In institutions for children deprived of parental care</i>	632	666	629	669	595	661
Smještaj u drugu obitelj <i>With foster family</i>	961	908	918	934	821	742
U učenički ili studentski dom <i>In pupil or student hostel</i>	90	121	62	80	59	66
U ustanovu za rehabilitaciju i skrb <i>In institution for rehabilitation and care</i>	270	287	219	208	117	241



**6. Oblici i usluge socijalne skrbi - maloljetni korisnici**  
*Forms and services of social welfare - minor beneficiaries*

<b>Kategorija korisnika</b> <i>Category of beneficiaries</i>	<b>2002</b>	<b>2003</b>	<b>2004</b>	<b>2005</b>	<b>2006</b>	<b>2007</b>
U druge ustanove socijalne skrbi <i>In other social welfare facilities</i>	201	156	170	161	179	153
<b>Odgojne mjere skrbi i sigurnosti prema maloljetnicima</b> <i>Educational and protective measures to minors</i>	2.664	2.804	2.271	2.252	2.376	2.040
Sudski ukor <i>Court reprimand</i>	610	572	275	207	209	257
Pojačan nadzor roditelja ili staratelja <i>Extensive surveillance by parents or guardians</i>	513	525	620	601	634	738
Pojačan nadzor organa starateljstva <i>Extensive surveillance by guardian organization</i>	598	596	542	675	550	429
Pojačan nadzor u drugoj obitelji <i>Extensive surveillance in foster family</i>	20	26	131	30	39	17
Upućivanje u disciplinski centar <i>Assignment to disciplinary centre</i>	19	18	10	4	35	-
Upućivanje u odgojnu organizaciju <i>Assignment to organization for upbringing</i>	24	35	44	27	52	32
Upućivanje u odgojno-popravni dom <i>Assignment to correctional institution</i>	16	14	15	6	15	15
Upućivanje u maloljetnički pritvor <i>Assignment to juvenile prison</i>	16	12	16	19	13	23
Upućivanje u ustanovu za defektne maloljetnike <i>Assignment to institution for defective minors</i>	9	35	-	-	6	18
Ostale usluge <i>Other services</i>	839	971	618	683	823	511

**6. Oblici i usluge socijalne skrbi - maloljetni korisnici**  
*Forms and services of social welfare - minor beneficiaries*

<b>Kategorija korisnika</b> <i>Category of beneficiaries</i>	<b>2002</b>	<b>2003</b>	<b>2004</b>	<b>2005</b>	<b>2006</b>	<b>2007</b>
<b>Pomoć za osposobljavanje i privređivanje</b> <i>Assistance in vocational training</i>	302	276	334	637	375	506
Osposobljavanje za rad i privređivanje <i>Vocational training</i>	201	194	233	335	270	358
Pomoć za rehabilitaciju <i>Assistance in rehabilitation</i>	82	82	93	276	105	137
Uključivanje u radni odnos <i>Employment</i>	-	-	6	12	-	11
Uključivanje u ostale oblike (kućna radinost) <i>Inclusion in other forms of work (working at home)</i>	19	-	2	14	-	-
<b>Novčane pomoći</b> <i>Allowances</i>	7.657	6.859	6.954	9.004	7.188	10.281
Stalna novčana pomoć <i>Permanent allowance</i>	1.239	1.072	1.064	1.163	1.057	1.185
Izuzetna novčana pomoć <i>Special allowance</i>	1.055	526	376	355	275	344
Jednokratna novčana pomoć <i>One-off allowance</i>	2.647	2.887	2.431	4.128	3.124	3.564
Prava na dodatak za pomoć i njegu od strane drugih osoba <i>Entitlement to additional allowance for assistance and care rendered by other persons</i>	1.517	1.605	2.325	2.817	2.461	4.173
Pomoć za opremu djeteta samohranim nezaposlenim roditeljima <i>Allowance to single unemployed parents for outfitting a child</i>	1.199	769	758	541	271	1.015

**6. Oblici i usluge socijalne skrbi - maloljetni korisnici**  
*Forms and services of social welfare - minor beneficiaries*

<b>Kategorija korisnika</b> <i>Category of beneficiaries</i>	<b>2002</b>	<b>2003</b>	<b>2004</b>	<b>2005</b>	<b>2006</b>	<b>2007</b>
<b>Ostali oblici skrbi i usluga</b> <i>Other forms of protection and services</i>	41.915	44.005	94.206	53.228	59.170	59.456
Zdravstvena skrb na teret općine ili centra <i>Health care at the expense of municipality or social welfare centre</i>	2.873	2.743	3.283	2.843	2.989	4.182
Pomoć u rješavanju stambenog pitanja <i>Assistance in solving housing problems</i>	248	156	144	236	110	101
Mirenje bračnih partnera <i>Reconciliation of spouses</i>	310	345	112	98	44	23
Njega i pomoć u kući <i>Care and assistance rendered at home</i>	41	38	47	71	3	89
Pomoć u sređivanju konfliktnih okolnosti <i>Assistance in conflict resolution</i>	3.335	4.533	5.545	5.682	5.995	4.546
Usluge socijalnog i drugog stručnog rada <i>Services of social and other professional work</i>	21.754	22.781	68.141	32.626	39.976	44.941
Pomoć za ishranu, ogrjev, odjeću i obuću <i>Allowances for food, fuel, clothing and footwear</i>	13.354	13.409	16.934	11.672	10.053	5.574

**7. Oblici i usluge socijalne skrbi - punoljetni korisnici**  
*Forms and services of social welfare - adult beneficiaries*

<b>Kategorija korisnika</b> <i>Category of beneficiaries</i>	<b>2001</b>	<b>2002</b>	<b>2003</b>	<b>2004</b>	<b>2005</b>	<b>2006</b>	<b>2007</b>
<b>UKUPNO</b> <i>TOTAL</i>	<b>288.961</b>	<b>269.740</b>	<b>291.463</b>	<b>369.211</b>	<b>335.646</b>	<b>385.889</b>	<b>421.898</b>
<b>Starateljstvo</b> <i>Guardianship</i>	9.109	12.074	8.509	7.765	8.715	6.942	8.606
Starateljstvo <i>Guardianship</i>	3.701	4.017	3.843	2.426	4.993	2.791	4.184
Starateljstvo za osobite slučajeve <i>Guardianship for special cases</i>	5.408	8.057	4.666	5.339	3.722	4.151	4.422
<b>Smještaj u ustanove</b> <i>Placement in institutions</i>	1.561	1.780	1.595	1.893	1.848	1.987	1.895
U ustanovu za rehabilitaciju i skrb <i>In institution for rehabilitation and care</i>	246	234	355	227	251	307	252
U druge ustanove socijalne skrbi <i>In other social welfare facilities</i>	705	896	708	989	971	1.224	1.029
Smještaj u dom za stare osobe <i>In institution for old persons</i>	610	650	532	677	626	456	614
<b>Pomoć za osposobljavanje i privređivanje</b> <i>Assistance in vocational training</i>	154	163	273	1.214	876	268	520
Osposobljavanje za rad i privređivanje <i>Vocational training</i>	39	15	133	407	178	65	97
Pomoć za rehabilitaciju <i>Assistance in rehabilitation</i>	7	64	40	578	562	54	46
Uključivanje u radni odnos <i>Employment</i>	67	59	78	178	87	130	212

**7. Oblici i usluge socijalne skrbi - punoljetni korisnici**  
*Forms and services of social welfare - adult beneficiaries*

<b>Kategorija korisnika</b> <i>Category of beneficiaries</i>	<b>2001</b>	<b>2002</b>	<b>2003</b>	<b>2004</b>	<b>2005</b>	<b>2006</b>	<b>2007</b>
Uključivanje u ostale oblike (kućna radinost) <i>Inclusion in other forms of work (working at home)</i>	41	25	22	51	49	19	165
<b>Novčane pomoći</b> <i>Allowances</i>	53.903	60.518	70.233	81.796	81.168	99.362	98.084
Stalna novčana pomoć <i>Permanent allowance</i>	19.779	19.022	16.022	17.214	15.463	13.819	13.768
Izuzetna novčana pomoć <i>Special allowance</i>	2.383	2.124	3.136	2.745	1.830	2.320	5.052
Jednokratna novčana pomoć <i>One-off allowance</i>	24.106	28.316	34.324	41.526	35.372	49.132	47.729
Prava na dodatak za pomoć i njegu od strane drugih osoba <i>Entitlement to additional allowance for assistance and care rendered by other persons</i>	7.336	10.176	15.135	18.726	26.901	29.404	27.492
Pomoć za opremu djeteta samohranim nezaposlenim roditeljima <i>Allowance to single unemployed parents for outfitting a child</i>	299	880	1.616	1.585	1.602	4.687	4.043
<b>Ostali oblici skrbi i usluga</b> <i>Other forms of protection and services</i>	224.234	195.205	210.853	276.543	243.039	277.330	312.793
Zdravstvena zaštita na teret općine ili centra <i>Health care at the expense of municipality or social welfare centre</i>	12.777	13.628	15.803	15.434	17.031	14.975	19.593
Pomoć u rješavanju stambenog pitanja <i>Assistance in solving housing problems</i>	594	1.464	1.113	1.586	857	572	879

**7. Oblici i usluge socijalne skrbi - punoljetni korisnici**  
*Forms and services of social welfare - adult beneficiaries*

<b>Kategorija korisnika</b> <i>Category of beneficiaries</i>	<b>2001</b>	<b>2002</b>	<b>2003</b>	<b>2004</b>	<b>2005</b>	<b>2006</b>	<b>2007</b>
Mirenje bračnih partnera <i>Reconciliation of spouses</i>	5.500	5.871	5.988	4.261	4.354	3.501	4.404
Njega i pomoć u kući <i>Care and assistance rendered at home</i>	1.654	1.276	1.220	1.309	2.590	972	1.101
Pomoć u sređivanju konfliktnih okolnosti <i>Assistance in conflict resolution</i>	6.671	9.027	10.179	9.965	19.240	11.082	23.173
Usluge socijalnog i drugog stručnog rada <i>Services of social and other professional work</i>	155.962	131.229	146.857	211.316	178.799	219.944	207.259
Pomoć za ishranu, ogrjev, odjeću i obuću <i>Allowances for food, fuel, clothing and footwear</i>	41.076	32.710	29.693	32.672	20.168	26.284	56.384

**USTANOVE SOCIJALNE SKRBI**  
*SOCIAL WELFARE INSTITUTIONS*





**DOMOVI ZA DJECU I MLADEŽ**  
**INSTITUTIONS FOR CHILDREN AND ADOLESCENTS**

**8. Korisnici po spolu i starosti**  
*Residents by sex and age*

		Ukupno <i>Total</i>	Godine starosti korisnika <i>Age of residents</i>					iznad 18 godina <i>over 18 years</i>
			do 3 godine <i>under 3 years</i>	3 - 6	7 - 10	11 - 14	15 - 18	
2002	<b>svega</b> <b>all</b>	<b>587</b>	<b>111</b>	<b>86</b>	<b>85</b>	<b>99</b>	<b>153</b>	<b>53</b>
	muški <i>male</i>	306	57	49	44	52	74	30
	ženski <i>female</i>	281	54	37	41	47	79	23
2003	<b>svega</b> <b>all</b>	<b>603</b>	<b>96</b>	<b>76</b>	<b>94</b>	<b>87</b>	<b>167</b>	<b>83</b>
	muški <i>male</i>	345	53	43	50	48	98	53
	ženski <i>female</i>	258	43	33	44	39	69	30
2004	<b>svega</b> <b>all</b>	<b>733</b>	<b>69</b>	<b>112</b>	<b>119</b>	<b>124</b>	<b>173</b>	<b>136</b>
	muški <i>male</i>	374	39	64	68	64	96	43
	ženski <i>female</i>	359	30	48	51	60	77	93
2005	<b>svega</b> <b>all</b>	<b>721</b>	<b>66</b>	<b>96</b>	<b>124</b>	<b>123</b>	<b>143</b>	<b>169</b>
	muški <i>male</i>	362	36	61	76	65	78	46
	ženski <i>female</i>	359	30	35	48	58	65	123
2006	<b>svega</b> <b>all</b>	<b>763</b>	<b>64</b>	<b>91</b>	<b>133</b>	<b>130</b>	<b>167</b>	<b>178</b>
	muški <i>male</i>	358	35	56	77	61	97	32
	ženski <i>female</i>	405	29	35	56	69	70	146
2007	<b>svega</b> <b>all</b>	<b>790</b>	<b>96</b>	<b>78</b>	<b>128</b>	<b>144</b>	<b>165</b>	<b>179</b>
	muški <i>male</i>	384	59	45	85	75	83	37
	ženski <i>female</i>	406	37	33	43	69	82	142

\*U ovoj tablici nisu uključeni podaci za Brčko Distrikt

\*District Brcko is not included in this table

**9. Korisnici po roditeljima**  
*Residents by parents*

	2002	2003	2004	2005	2006	2007	
<b>UKUPNO</b>	<b>587</b>	<b>603</b>	<b>733</b>	<b>721</b>	<b>763</b>	<b>790</b>	<b>TOTAL</b>
<b>Bez oba roditelja</b>	159	125	117	108	138	136	<i>Without both parents</i>
<b>Samo s majkom</b>	232	248	342	331	312	324	<i>Only with mother</i>
<b>Samo s ocem</b>	57	58	67	71	72	74	<i>Only with father</i>
<b>S oba roditelja</b>	139	172	207	211	241	256	<i>With both parents</i>
<b>Od toga djeca razvedenih roditelja</b>	56	72	100	114	130	137	<i>Of which, children of divorced parents</i>

\*U ovoj tablici nisu uključeni podaci za Brčko Distrikt

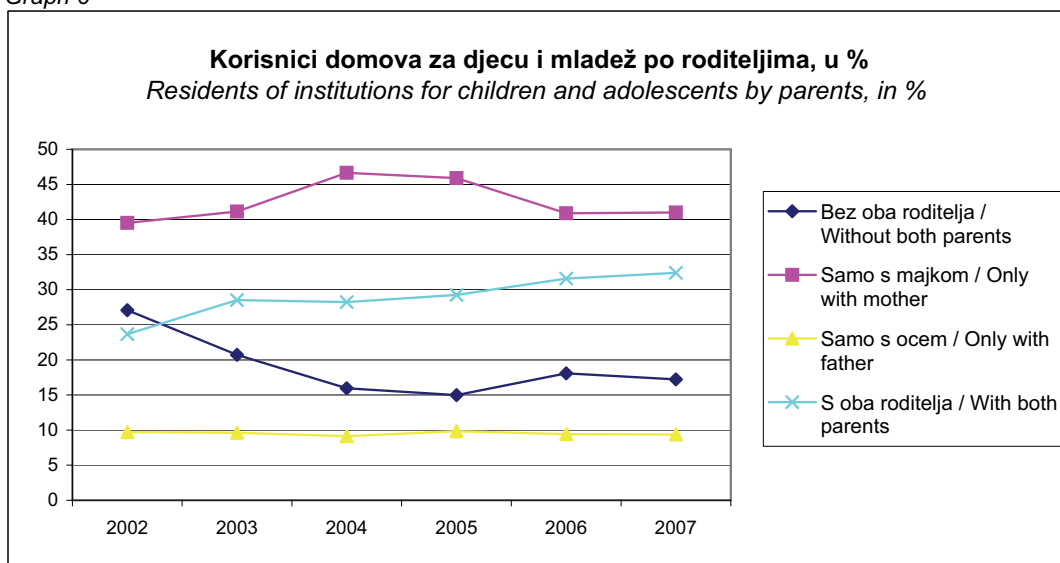
\*District Brcko is not included in this table

**10. Struktura korisnika po roditeljima u %**  
*Structure of beneficiaries by parents in %*

	2002	2003	2004	2005	2006	2007	
<b>UKUPNO</b>	<b>100,00</b>	<b>100,00</b>	<b>100,00</b>	<b>100,00</b>	<b>100,00</b>	<b>100,00</b>	<b>TOTAL</b>
<b>Bez oba roditelja</b>	27,09	20,73	15,96	14,98	18,09	17,21	<i>Without both parents</i>
<b>Samo s majkom</b>	39,52	41,13	46,66	45,91	40,89	41,01	<i>Only with mother</i>
<b>Samo s ocem</b>	9,71	9,62	9,14	9,85	9,43	9,37	<i>Only with father</i>
<b>S oba roditelja</b>	23,68	28,52	28,24	29,26	31,59	32,41	<i>With both parents</i>

**Grafik 6**

*Graph 6*



**11. Korisnici po školovanju**  
*Residents by education*

	Ukupno <i>Total</i>	Vrsta škole koju pohađaju <i>Level of attended school</i>				Ne pohađaju školu <i>Not attending school</i>
		Svega <i>all</i>	Osnovna škola <i>basic school</i>	Srednja škola <i>secondary school</i>	Viša škola ili fakultet <i>upper-secondary school or university</i>	
2002	587	371	217	138	16	216
2003	603	398	205	145	48	205
2004	733	453	251	190	12	280
2005	721	438	290	138	10	283
2006	763	464	308	147	9	299
2007	790	486	315	161	10	304

\*U ovoj tablici nisu uključeni podaci za Brčko Distrikt  
\*District Brcko is not included in this table

**12. Korisnici po plaćanju boravka u domu**  
*Residents by payment*

	Ukupno <i>Total</i>	Plaćaju boravak <i>Paying for residence</i>			Ne plaćaju boravak <i>Not paying for residence</i>
		Svega <i>All</i>	u cjelosti <i>completely</i>	djelimično <i>partially</i>	
2002	587	376	198	178	211
2003	603	273	227	46	330
2004	733	358	231	127	375
2005	721	414	329	85	307
2006	763	421	349	72	342
2007	790	293	255	38	497

\*U ovoj tablici nisu uključeni podaci za Brčko Distrikt  
\*District Brcko is not included in this table

**13. Zaposleni u domovima za djecu i mladež**  
*Employees in the institutions for children and youth*

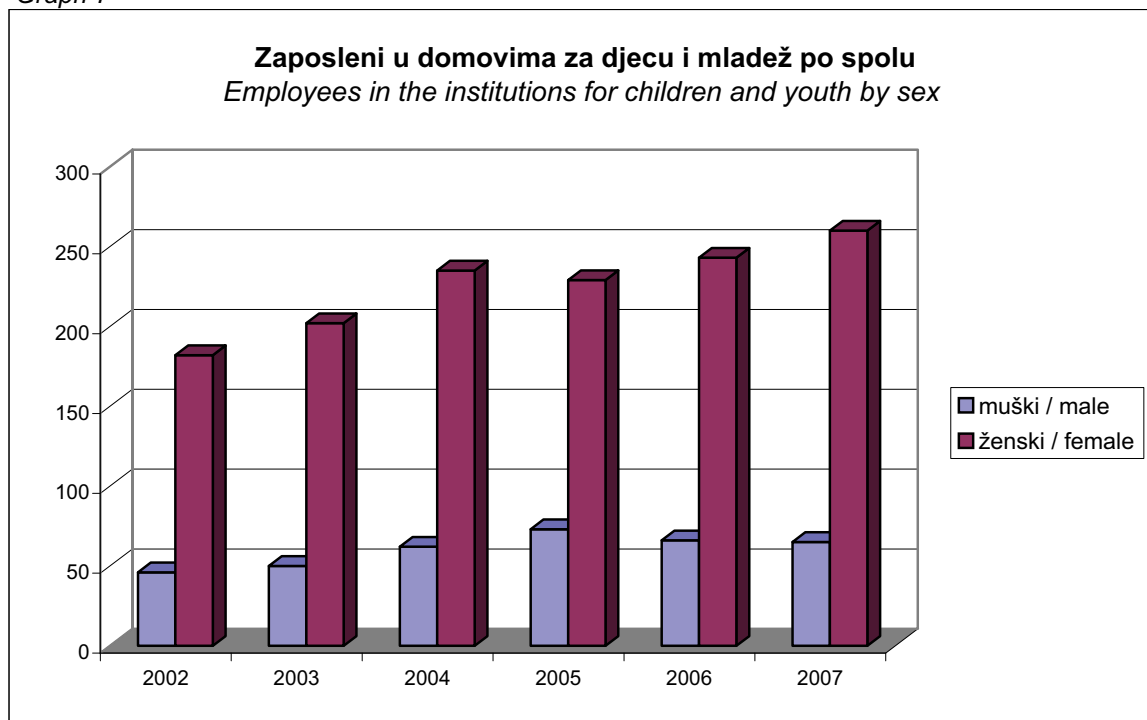
	2002	2003	2004	2005	2006	2007	
<b>UKUPNO</b>	<b>228</b>	<b>252</b>	<b>297</b>	<b>302</b>	<b>309</b>	<b>325</b>	<b>TOTAL</b>
muški	46	50	62	73	66	65	male
ženski	182	202	235	229	243	260	female
<b>Odgajatelji</b>	59	58	85	93	89	93	<i>Raisers &amp; care takers</i>
<b>Zdravstveno osoblje</b>	44	42	50	48	47	54	<i>Health care workers</i>
<b>Ostali stručni radnici</b>	20	16	25	28	31	32	<i>Other experts</i>
<b>Administrativno osoblje</b>	22	22	23	23	25	23	<i>Administrative personnel</i>
<b>Ostali</b>	83	114	114	110	117	123	<i>Others</i>

\*U ovoj tablici nisu uključeni podaci za Brčko Distrikt

\*District Brcko is not included in this table

**Grafik 7**

*Graph 7*



**USTANOVE SOCIJALNE SKRBI ZA INVALIDNU DJECU I MLADEŽ OMETENU U  
PSIHIČKOM I TJELESNOM RAZVITKU**  
SOCIAL WELFARE INSTITUTIONS FOR PHYSICALLY AND MENTALLY HANDICAPPED  
CHILDREN AND ADOLESCENTS

**14. Korisnici po spolu i starosti**  
*Residents by sex and age*

		Ukupno <i>Total</i>	Godine starosti korisnika <i>Age of residents</i>					iznad 21 godine <i>over 18 years</i>
			10 godina i mlađi <i>10 years and younger</i>	11 - 13	14 - 15	16 - 17	18 - 21	
2002	<b>svega all</b>	<b>1.318</b>	<b>113</b>	<b>148</b>	<b>106</b>	<b>97</b>	<b>140</b>	<b>714</b>
	muški <i>male</i>	875	57	74	59	57	83	545
	ženski <i>female</i>	443	56	74	47	40	57	169
2003	<b>svega all</b>	<b>1.493</b>	<b>133</b>	<b>177</b>	<b>121</b>	<b>100</b>	<b>160</b>	<b>802</b>
	muški <i>male</i>	960	79	86	63	52	104	576
	ženski <i>female</i>	533	54	91	58	48	56	226
2004	<b>svega all</b>	<b>1.451</b>	<b>149</b>	<b>151</b>	<b>129</b>	<b>102</b>	<b>134</b>	<b>786</b>
	muški <i>male</i>	878	80	73	75	46	87	517
	ženski <i>female</i>	573	69	78	54	56	47	269
2005	<b>svega all</b>	<b>1.482</b>	<b>130</b>	<b>149</b>	<b>125</b>	<b>100</b>	<b>144</b>	<b>834</b>
	muški <i>male</i>	903	69	88	60	50	78	558
	ženski <i>female</i>	579	61	61	65	50	66	276
2006	<b>svega all</b>	<b>1.553</b>	<b>129</b>	<b>151</b>	<b>102</b>	<b>121</b>	<b>139</b>	<b>911</b>
	muški <i>male</i>	954	64	94	44	59	72	621
	ženski <i>female</i>	599	65	57	58	62	67	290
2007	<b>svega all</b>	<b>1.511</b>	<b>111</b>	<b>128</b>	<b>104</b>	<b>113</b>	<b>158</b>	<b>897</b>
	muški <i>male</i>	919	58	74	50	52	76	609
	ženski <i>female</i>	592	53	54	54	61	82	288

\*U ovoj tablici nisu uključeni podaci za Brčko

\*District Brcko is not included in this table

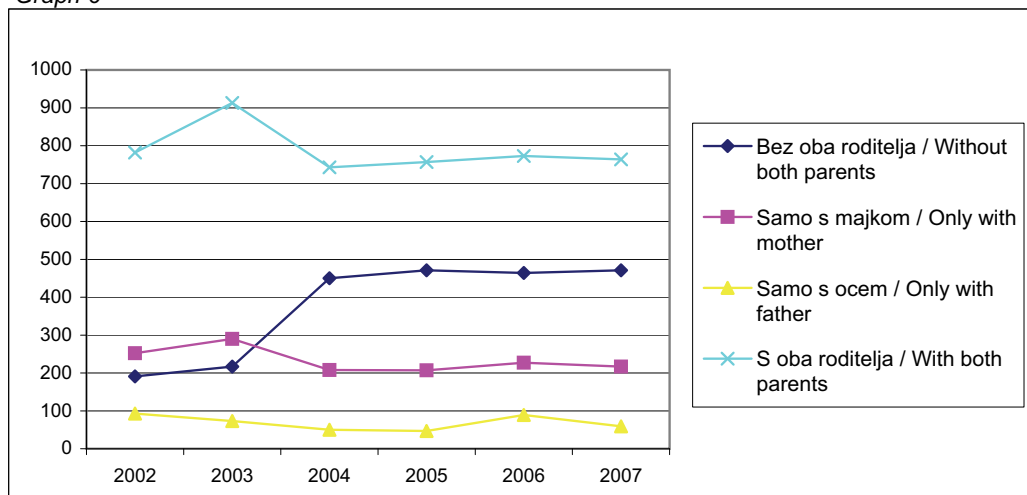
**15. Korisnici po spolu i roditeljima**  
Residents by sex and parents

	2002	2003	2004	2005	2006	2007	
<b>UKUPNO</b>	<b>1.318</b>	<b>1.493</b>	<b>1.451</b>	<b>1.482</b>	<b>1.553</b>	<b>1.511</b>	<b>TOTAL</b>
muški	875	960	864	903	954	919	male
ženski	443	533	587	579	599	592	female
<b>Bez oba roditelja</b>	191	217	450	471	464	471	<i>Without both parents</i>
muški	156	172	311	330	328	320	male
ženski	35	45	139	141	136	151	female
<b>Samo s majkom</b>	252	290	208	207	227	217	<i>Only with mother</i>
muški	176	201	125	122	140	122	male
ženski	76	89	83	85	87	95	female
<b>Samo s ocem</b>	93	73	50	47	89	59	<i>Only with father</i>
muški	70	44	26	24	53	31	male
ženski	23	29	24	23	36	28	female
<b>S oba roditelja</b>	782	913	743	757	773	764	<i>With both parents</i>
muški	473	543	402	427	433	446	male
ženski	309	370	341	330	340	318	female
<b>Od toga djeca razvedenih roditelja</b>	96	109	215	66	77	84	<i>Of which, children of divorced parents</i>
muški	64	63	134	43	54	58	male
ženski	32	46	81	23	23	26	female

\*U ovoj tablici nisu uključeni podaci za Brčko

\*District Brcko is not included in this table

**Grafik 6**  
Graph 6



**16. Korisnici po pohađanju škole**  
*Residents by school attendance*

	Ukupno <i>Total</i>	Pohađaju <i>Attending</i>		Osposobljavaju se za rad <i>Attending vocational training</i>	Ostala djeca i mladež <i>Other children and adolescents</i>
		Osnovnu školu <i>basic school</i>	Srednju školu <i>secondary school</i>		
<b>2002</b>	1.318	354	108	127	729
<b>2003</b>	1.493	384	99	156	854
<b>2004</b>	1.451	330	93	149	879
<b>2005</b>	1.482	307	92	175	908
<b>2006</b>	1.553	306	93	123	1.031
<b>2007</b>	1.511	261	85	150	1.015

**\*U ovoj tablici nisu uključeni podaci za Brčko Distrikt**

*\*District Brcko is not included in this table*

**17. Korisnici po plaćanju boravka**  
*Residents by payment*

	Ukupno <i>Total</i>	Plaćaju boravak <i>Paying for residence</i>		Ne plaćaju boravak <i>Not paying for residence</i>
		u cjelosti <i>completely</i>	djelimično <i>partially</i>	
<b>2002</b>	1.318	179	144	995
<b>2003</b>	1.493	181	21	1.291
<b>2004</b>	1.451	144	55	1.252
<b>2005</b>	1.482	135	21	1.326
<b>2006</b>	1.553	68	93	1.392
<b>2007</b>	1.511	203	35	1.273

**\*U ovoj tablici nisu uključeni podaci za Brčko Distrikt**

*\*District Brcko is not included in this table*

**18. Zaposleni u ustanovama za invalidnu djecu i mladež ometenu u psihičkom i tjelesnom razvitku**

*Employees in the institutions for children and youth impeded in psychical and physical development*

	2002	2003	2004	2005	2006	2007	
<b>UKUPNO</b>	<b>523</b>	<b>551</b>	<b>580</b>	<b>621</b>	<b>625</b>	<b>655</b>	<b>TOTAL</b>
<b>Odgajatelji</b>	158	159	89	214	185	223	<i>Raisers &amp; care takers</i>
<b>Zdravstveno osoblje</b>	48	63	66	58	65	113	<i>Health personnel</i>
<b>Socijalni radnici</b>	9	9	10	11	10	12	<i>Social workers</i>
<b>Psiholozi i padagozi</b>	13	12	11	8	8	9	<i>Psychologists and pedagogues</i>
<b>Defektolozi</b>	54	62	76	58	62	62	<i>Special education therapists</i>
<b>Instruktori</b>	-	-	6	7	7	3	<i>Instructors</i>
<b>Administrativno osoblje</b>	37	42	39	46	44	44	<i>Administrative personnel</i>
<b>Ostali</b>	204	204	283	219	244	189	<i>Others</i>

**\*U ovoj tablici nisu uključeni podaci za Brčko Distrikt**

*\*District Brcko is not included in this table*



**USTANOVE SOCIJALNE SKRBI ZA ODRASLE INVALIDNE OSOBE**  
**SOCIAL WELFARE INSTITUTIONS FOR ADULT HANDICAPPED PERSONS**

		<b>19. Invalidi i rehabilitanti po invaliditetu</b>					
		<i>Disabled and persons on rehabilitation by type of handicap</i>					
		<b>Prema vrsti invaliditeta</b>					
		<i>By type of handicap</i>					
		<b>Ukupno</b>	<b>Tjelesni invalidi</b>	<b>S oštećenim vidom</b>	<b>S oštećenim sluhom</b>	<b>Psihički zaostali</b>	<b>Ostali</b>
		<i>Total</i>	<i>Physically disabled persons</i>	<i>With visual impairments</i>	<i>With hearing impairment</i>	<i>Mentally retarded</i>	<i>Other</i>
2002	svoga all	1.047	196	471	116	251	13
2003	svoga all	641	60	427	103	9	42
2004	svoga all	220	81	28	95	16	-
2005	svoga all	251	78	74	90	9	-
2006	svoga all	171	48	25	94	-	4
2007	svoga all	171	49	24	95	-	3

\* U ovoj tablici su uključeni podaci za Brčko Distrikt.

\* District Brcko is included.

**20. Invalidi i rehabilitanti po pravnoj osnovi i razlogu korištenja ustanove**  
*Disabled and persons on rehabilitation by legal base and reason for institutionalisation*

		Zaposleni invalidi <i>Disabled persons employed</i>			Rehabilitanti <i>Persons on rehabilitation</i>	
		svega <i>all</i>	u zaštitnoj radionici <i>in workshop</i>	rade kod kuće <i>working at home</i>	svega <i>all</i>	na prekvalifikaciji <i>on training for new qualification</i>
<b>Ukupno</b> <i>Total</i>	2002	204	199	5	843	-
	2003	206	206	-	435	-
	2004	197	192	5	62	-
	2005	141	135	6	107	-
	2006	144	137	7	27	-
	2007	164	145	1	25	4
	<b>Žene</b> <i>Female</i>	2002	82	80	2	174
2003		92	92	-	1	-
2004		87	85	2	12	-
2005		84	58	26	1	-
2006		72	70	2	1	-
2007		67	67	-	1	-
<b>Vojne i civilne žrtve rata</b> <i>Military and civil victims of war</i>		2002	15	13	2	-
	2003	10	10	-	-	-
	2004	9	7	2	-	-
	2005	9	6	3	-	-
	2006	10	6	4	-	-
	2007	8	7	1	2	-
	<b>Invalidi rada</b> <i>Invalids of work</i>	2002	-	-	-	-
2003		-	-	-	-	-
2004		-	-	-	-	-
2005		-	-	-	-	-
2006		-	-	-	-	-
2007		-	-	-	-	-
<b>Ostali invalidi</b> <i>Other disabled persons</i>		2002	189	186	3	783
	2003	196	196	-	402	-
	2004	188	185	3	3	-
	2005	132	129	3	51	-
	2006	134	131	3	1	-
	2007	138	138	-	5	4
	<b>Invalidna djeca</b> <i>Disabled children</i>	2002	-	-	-	60
2003		-	-	-	33	-
2004		-	-	-	59	-
2005		-	-	-	56	-
2006		-	-	-	62	-
2007		18	-	-	52	-

\*U ovoj tablici nisu uključeni podaci za Brčko Distrikt

\*District Brcko is not included in this table

**USTANOVE SOCIJALNE SKRBI ZA ODRASLE OSOBE**  
**SOCIAL WELFARE INSTITUTIONS FOR ADULT PERSONS**

**21. Korisnici po starosti**  
*Residents by age*

	Ukupno <i>Total</i>	Starost korisnika <i>Age of residents</i>							
		Ispod 40 godina <i>Under 40 years</i>	40 - 49	50 - 59	60 - 64	65 - 69	70 - 74	75 - 79	80 i više <i>80 and older</i>
2002	<b>1.753</b>	27	111	203	181	299	291	308	333
2003	<b>2.131</b>	102	214	270	232	367	312	295	339
2004	<b>2.167</b>	115	221	284	210	337	351	335	314
2005	<b>2.294</b>	131	198	257	234	376	413	359	326
2006	<b>2.287</b>	113	179	271	227	320	385	367	425
2007	<b>2.574</b>	126	205	299	250	343	486	436	429

\* U ovoj tablici su uključeni podaci za Brčko Distrikt.

\* *District Brcko is included.*

**22. Korisnici po plaćanju boravka u domu**  
*Residents by payment*

	Ukupno <i>Total</i>	Plaćaju boravak <i>Paying for residence</i>			Ne plaćaju boravak <i>Not paying for residence</i>
		svoga <i>all</i>	u cjelosti <i>completely</i>	djelimično <i>partially</i>	
2002	<b>1.753</b>	1.012	586	426	741
2003	<b>2.131</b>	1.354	806	548	777
2004	<b>2.167</b>	1.631	975	656	536
2005	<b>2.294</b>	1.832	1.084	748	462
2006	<b>2.287</b>	1.819	1.005	814	468
2007	<b>2.574</b>	2.177	1.317	860	397

\* U ovoj tablici su uključeni podaci za Brčko Distrikt.

\* *District Brcko is included.*

**23. Korisnici po razlogu smještaja**  
*Residents by reason for institutionalisation*

	<b>Svega</b> <i>All</i>	<b>Starost</b> <i>Old age</i>	<b>Teže kronično bolesni</b> <i>Severely chronically diseased</i>	<b>Mentalne smetnje</b> <i>Mental hendicaps</i>	<b>Tjelesni invaliditet</b> <i>Physical handicaps</i>	<b>Nesređene stambene prilike</b> <i>Housing troubles</i>	<b>Poremećeni odnosi u obitelji</b> <i>Disturbed family relations</i>	<b>Ostalo</b> <i>Other</i>
<b>svega all</b>	<b>1.753</b>	<b>467</b>	<b>432</b>	<b>275</b>	<b>271</b>	<b>194</b>	<b>37</b>	<b>77</b>
2002 muški <i>male</i>	658	169	117	109	122	61	17	63
ženski <i>female</i>	1.095	298	315	166	149	133	20	14
<b>svega all</b>	<b>2.131</b>	<b>448</b>	<b>652</b>	<b>519</b>	<b>317</b>	<b>152</b>	<b>35</b>	<b>8</b>
2003 muški <i>male</i>	843	153	187	256	151	76	15	5
ženski <i>female</i>	1.288	295	465	263	166	76	20	3
<b>svega all</b>	<b>2.167</b>	<b>441</b>	<b>711</b>	<b>478</b>	<b>295</b>	<b>154</b>	<b>34</b>	<b>54</b>
2004 muški <i>male</i>	860	146	266	199	153	59	9	28
ženski <i>female</i>	1.307	295	445	279	142	95	25	26
<b>svega all</b>	<b>2.294</b>	<b>454</b>	<b>675</b>	<b>560</b>	<b>311</b>	<b>224</b>	<b>36</b>	<b>34</b>
2005 muški <i>male</i>	950	188	211	304	133	70	17	27
ženski <i>female</i>	1.344	266	464	256	178	154	19	7
<b>svega all</b>	<b>2.287</b>	<b>609</b>	<b>687</b>	<b>504</b>	<b>234</b>	<b>182</b>	<b>35</b>	<b>36</b>
2006 muški <i>male</i>	973	256	268	230	122	66	16	15
ženski <i>female</i>	1.314	353	419	274	112	116	19	21
<b>svega all</b>	<b>2.574</b>	<b>658</b>	<b>884</b>	<b>507</b>	<b>244</b>	<b>154</b>	<b>38</b>	<b>89</b>
2007 muški <i>male</i>	1.048	267	364	214	104	56	13	30
ženski <i>female</i>	1.526	391	520	293	140	98	25	59