

GROSS DOMESTIC PRODUCT BY PRODUCTION APPROACH 2000 - 2009

GROSS DOMESTIC PRODUCT BY INCOME APPROACH 2005 - 2009

GROSS DOMESTIC PRODUCT BY EXPENDITURE APPROACH

**Experimental estimates
2004 - 2009**

National Accounts



Bosnia and Herzegovina



BHAS
Agency for Statistics of
Bosnia and Herzegovina

Sarajevo, December 2010

Publisher: Agency for Statistics of Bosnia and Herzegovina,
Bosnia and Herzegovina, Sarajevo, Zelenih beretki 26

Responsible: Mr Zdenko Milinović, director

Tables prepared by: Ms Dijana Mlikota, Ms Edina Kozić, Ms Aida Kesten, Ms Ivana Haračić

Graphs prepared by: Ms Dijana Mlikota, Ms Edina Kozić, Ms Aida Kesten, Ms Ivana Haračić

Proofread by: Ms Selveta Hot

Design and pre-press: Ms Lejla Rakić

Printed by: Avery d.o.o.

Users are kindly requested to mention data source

CONTENTS

FOREWORD	5
GROSS DOMESTIC PRODUCT BY PRODUCTION AND INCOME APPROACH	7
NOTES ON METHODOLOGY	11
TABLES AND GRAPHS	17
Table 1.1 Main aggregates of national accounts for BiH, current prices, 2000 – 2009	19
Table 1.2 Gross domestic product for BiH and entities, current prices, 2000 – 2009	19
Table 1.3 Share of entities in GDP of BiH, 2000 – 2009	19
Table 2.1 BiH – Gross value added by activities and gross domestic product, current prices, 2000 – 2009	20
Table 2.2 BiH – Gross value added by activities and gross domestic product, current prices, structure	26
Table 2.3 BiH – Gross value added by activities and gross domestic product, current prices, nominal indices	29
Table 3.1 Gross value added by activities and gross domestic product, constant prices, 2001 – 2009	32
Table 3.2 Gross value added by activities and gross domestic product, constant prices, real indices	34
Table 4.1 BiH – Production account by activities in 2008, current prices	35
Table 4.2 BiH – Production account by activities in 2009, current prices	38
Table 5.1 BiH – Generation of income account in 2005, current prices	41
Table 5.2 BiH – Generation of income account in 2006, current prices	42
Table 5.3 BiH – Generation of income account in 2007, current prices	43
Table 5.4 BiH – Generation of income account in 2008, current prices	44
Table 5.5 BiH – Generation of income account in 2009, current prices	45
GRAPHS	46
GROSS DOMESTIC PRODUCT BY EXPENDITURE APPROACH	47
NOTES ON METHODOLOGY	51

TABLES AND GRAPHS	61
Table 1.1 Gross domestic product by expenditure approach, current prices, 2004, 2005, 2006, 2007, 2008 and 2009	63
Table 1.2 Gross domestic product by expenditure approach, current prices, 2004, 2005, 2006, 2007, 2008 and 2009; structure	63
Table 2.1 Gross domestic product by expenditure approach, constant prices, 2004, 2005, 2006, 2007, 2008 and 2009	64
Table 2.2 Gross domestic product by expenditure approach, constant prices, 2004, 2005, 2006, 2007, 2008 and 2009; structure	64
Table 3.1 Gross domestic product by expenditure approach, nominal indices	65
Table 3.2 Gross domestic product by expenditure approach, real indices	65
Table 4.1 Households final consumption expenditure, current prices, 2004, 2005, 2006, 2007, 2008 and 2009	67
Table 4.2 Households final consumption expenditure, current prices, 2004, 2005, 2006, 2007, 2008 and 2009; structure	67
Table 5.1 Households final consumption expenditure, constant prices, 2004, 2005, 2007, 2008 and 2009	68
Table 5.2 Households final consumption expenditure, constant prices, 2004, 2005, 2006, 2007, 2008 and 2009; structure	68
Table 6.1 Households final consumption expenditure, nominal indices	69
Table 6.2 Households final consumption expenditure, real indices	69
Table 7.1 Gross fixed capital formation, current prices, 2004, 2005, 2006, 2007, 2008 and 2009	71
Table 7.2 Gross fixed capital formation, current prices, 2004, 2005, 2006, 2007, 2008 and 2009; structure	71
Table 7.3 Gross fixed capital formation, nominal indices	71
Table 8.1 Gross fixed capital formation, constant prices, 2004, 2005, 2006, 2007, 2008 and 2009	72
Table 8.2 Gross fixed capital formation, constant prices, 2004, 2005, 2006, 2007, 2008 and 2009; structure	72
Table 8.3 Gross fixed capital formation, real indices	72

FOREWORD

The Bulletin “National Accounts - Gross Domestic Product for Bosnia and Herzegovina” was prepared as a part of the regular activities of the Agency for Statistics of Bosnia and Herzegovina (BHAS) on the aggregation and publication of data at the level of Bosnia and Herzegovina. Data in the Bulletin presents results of the joint work of the Agency for Statistics of BiH, the Institute for Statistics of FBiH, the Institute for Statistics of Republika Srpska and BHAS Branch Office in Brcko District.

Main aggregates of national accounts for Bosnia and Herzegovina are presented in this publication. Gross domestic product of Bosnia and Herzegovina has been calculated according to the methodology of System of National Accounts – SNA 93 and European System of National Accounts ESA95. The use of this methodology is in its initial phase in Bosnia and Herzegovina. Activities on further application of these recommendations depend on volume, quality and content of primary statistical data the system is based on, and will directly reflect on future development of the System. Final task is introduction and consistent application of SNA methodology and recommendations in order to achieve comprehensive system of national accounts for Bosnia and Herzegovina.

Bulletin consists of two parts. Data of gross domestic product (GDP) by production approach at current and constant prices for period of 2000-2009 and gross domestic product by income approach for period of 2005-2009 are given in the first part. In line with methodological recommendations of the SNA93 and ESA95, some methodological improvements in estimation of gross domestic product by the production approach for 2008 have been done. Methodological improvements referred to: delimitation of taxes on products and other taxes on production, delimitation subsidies on products and other subsidies on production, harmonization with revised BoP data and other methodological improvements. Starting with methodological improvements applied to the calculation for 2008, corrections have been made to the previously published data series.

Data of gross domestic product by expenditure approach at current and constant prices for period of 2005-2009 are given in the second part.

With a view to improving National Accounts statistics of Bosnia and Herzegovina, Agency for statistics of BiH has started compilation of Gross domestic product by expenditure approach. The year 2004 was chosen as the starting reference period for the construction of the series based on available data source. Since there are still important gaps on the basic statistics available for the compilation of the national accounts and the quality of some statistics based on administrative sources or statistical survey need improvements, composed estimates should be considered experimental.

It should be noted that GDP estimates can be produced using three different approaches (production, expenditure, and income), each one showing a different aspect of the economic picture. Although theoretically the measurements of GDP using different approaches should coincide, in practice, discrepancies arise due to the differences in data sources and methods used. It is common practice that countries present these discrepancies explicitly in their publications, at the same time that efforts are made to keep them at a reasonable small relative magnitude. In the case of BiH the official figures of GDP are based on the production approach, thus showing the creation of value and its growth rate from year to year by industrial origin of economic activity, whereas the GDP estimates by final expenditures show how the value created through economic activity is spent by the different economic sectors in consumption, investment or sold abroad as exports

We are fully convinced that the data presented will facilitate a comprising observance of economic activity and offer the crucial information for a wide range of users.

Sarajevo, December 2010

Director

ABBREVIATIONS:

SNA	- System of National Accounts
ESA	- European System of Accounts
GDP	- Gross Domestic Product
FISIM	- Financial Intermediation Services Indirectly Measured
EU NACE Rev.1.1	- Classification of Economic Activities in the European Community
CPA	- Classification of Products by Activity
COICOP	- Classification of Individual Consumption by Purpose
PRODCOM	- Nomenclature of industrial products
CPI	- Consumer Price Index
RPI	- Retail Price Index
NPISH	- Non Profit Institutions Serving Households
BoP	- Balance of Payments

SYMBOLS:

-	- no occurrence
0	- values less than 0.5 of the unit of measure used
...	- data not available

GROSS DOMESTIC PRODUCT BY PRODUCTION AND INCOME APPROACH

Introductory remarks

In calculating the gross domestic product for Bosnia and Herzegovina and the entities, the methodology of the United Nations “System of National Accounts 1993”– SNA93 and its European version “European System of national accounts 1995”– ESA95 is used.

In order to determine the gross domestic product for BiH and the entities, all available statistical data of the businesses (enterprises, banks, insurance societies, institutions, authority bodies and other subjects), which are residents in the territory of BiH, as well as data concerning agricultural and non-agricultural production (holdings and shops) done within the household, are used.

The calculation is based on the data of business enterprises registered and allocated according to the Classification of activities, which has been harmonized with the European classification NACE – Rev.1.1. The business enterprises are at present, for the GDP calculation, grouped, as institutional units, according to the areas of activities, according to the headquarters and main activity, and not according to the units of homogenous activity.

The recalculation of gross domestic product into USD and EUR is based on the average annual exchange rate and the calculation of GDP per capita is computed according to the estimated total population in mid-year.

GDP based on production approach at current prices is estimated at 24.004 million KM in 2009 with a nominal decrease of 2,9% from 2008 to 2009.

Gross domestic product per capita is estimated at 6.246 KM or 4.438 USD in 2009.

Data of Central Bank of BiH about net primary income from the rest of the world and net current transfers from the rest of the world are used for calculation of gross national income and gross national disposable income. Gross national income for BiH in 2009 is estimated at 24,756 million KM and gross national disposable income is estimated at 27.949 million KM.

In the basic activities (agriculture, fishing, mining, manufacturing industry, electricity and construction) is made 34,9% of value added and in services activities 65,1%. The highest share in GDP has value added of trade by 13,1%, manufacturing industry by 10,8%, public administration by 9,8% and real estate by 9,0%.

Observed by activities decrease of the gross value added was recorded in: Manufacturing (8,4%), Construction (5,3%), Agriculture (4,5%), Trade (4,7%), Hotels and restaurants (2,4%), Mining (2,3%) and Transport (0,8%)

The largest growth of the gross value added was recorded in: Public administration (7,8%) and Real estate (4,8%).

The main contributors to the GDP negative growth rate of 2,9% were: Trade (12,7%), Manufacturing (10,5%), Public administration (9,5%), Real estate (8,7%) and Agriculture (7,1%).

GDP at constant prices (prices of previous year) for 2009 is estimated at 23.989 million KM. In volume terms (at constant prices) the decrease in GDP was 2,9%.

NOTES ON METHODOLOGY

Special remarks for data users

The attention of data users is drawn to some facts that could be useful in understanding the content and the size of the aggregates presented in the Bulletin.

The calculation of the gross domestic product has been determined based on the existing data sources, as well as based on official statistical surveys, which had been done in the statistical institutions. The number of and the content of the surveys do not yet satisfy the needs of the national accounts statisticians in order to meet the demands of full implementation of the above-mentioned international methodologies.

One of the general methodological characteristics of National Accounts is possibility of making revisions – performing corrections not only to original estimates and preliminary results, but also to final calculations and published statistical data. In the System of National Accounts, revisions generally occur due to the introduction of new data sources, the essential improvements to the existing ones, the changes of classifications or establishment of new principles, regulations and international recommendations.

I

In the first part of this Bulletin, the estimates of GDP by production approach from 2000 to 2009 and GDP by income approach from 2005 to 2009 are published. GDP data by production approach at current prices are presented at the level divisions (A60), while data at constant prices are presented at the level section (A17). GDP data by income approach are presented at current prices at level section (A17).

In order to ensure consistency in application of methodological principles of SNA93 and ESA9, methodological improvements have been done to the data for 2005 - 2008. Mentioned revision of the data requires the needs for revision of previously calculated and published data series of GDP for period 2000-2004, too, thus providing comparable data series for macroeconomic analysis

Calculation of gross domestic product at constant prices is very important indicator of measuring of the dynamics and level of economic development deprived from the influence of prices. For the calculation of GDP at constant prices the concept of the single indicator method is used, due to the lack of adequate deflators of intermediate consumption. The most common single indicator used is a volume index of output. Applying a single indicator has implicit the assumption of fixed I/O coefficients. Single **extrapolation** method presents extrapolation of output in the base year by adequate volume index. Single **deflation** method presents deflation of output in current year by adequate price indices. The estimates were compiled for each component of the production account (output, intermediate consumption and value added) and at prices of previous year.

Non observed economy (NOE) estimations are included in calculation of GDP. Illegal activities are not included. The estimate of imputed rental of owner-occupied dwellings is included in the GDP.

Brcko District exists as a separate administrative unit since 2000, estimate of gross domestic product for 2000 and next years are made on the basis of available data that are compiled and processed by the Brcko District Bureau of Statistics, now branch office of BHAS.

Agency for Statistics of Bosnia and Herzegovina calculates components of production account and income account for the Institutions of General Government of Bosnia and Herzegovina and the Central Bank of BiH. The calculated results of components of GDP are allocated among the entities according to the same principle that is applied for financing the activity of BiH institutions from entities' budgets and from 2006 the calculated data are allocated to the entities using percentages for redistribution of collected indirect taxes from single account of Indirect Taxation Authorities of BiH to the entities.

Financial intermediation services indirectly measured (FISIM) presents an interest margin and it is part of output of financial sector, is calculated as the difference between the claims of interest (active interest) and interest obligations under (passive interest) for the institutional units of financial intermediation. FISIM is not allocated by activities; value added on total economy is corrected by FISIM. In such a case the whole of the value of the output of FISIM is treated as intermediate consumption with zero output and negative value added equal in size but opposite in sign from the intermediate consumption. Value of FISIM is included in the gross value added and net operating surplus in generation of income accounts.

Concepts and definitions

The system of National Accounts is defined as a set of consistent, coherent, integrated and detailed macroeconomic accounts, balance sheets and tables which secure a systematic, comparable and detailed review of economic activities of a country. SNA is based on a unique concept, definitions and rules international standards which are described in detail in two reference manuals: the “System of National Accounts 1993” (SNA93) and the “European System of National Accounts 1995” (ESA95). The SNA93 provides more theoretical frame while the ESA95 includes additional details in order to come closer to the European environment and practices.

Integrated national accounts provide a comprehensive picture of the economy, which facilitates understanding of the economic relations among economic subjects and the structure and dynamic of the main aggregates describing the economic development.

System of National Accounts is an internationally accepted standard for macroeconomic accounts based on border concept of production. According to this concept, the production covers, besides material production and material services, also, non-material services in education, health and social care, culture, banking and insurance organizations, services of government organizations on all levels and all other services that are not in connection with material production.

The System of National Accounts contains value categories called aggregates. The Aggregates are the complex value categories that measure the results of activities of the whole economy observed from certain aspect. They are summary indicators, key values for macroeconomic analysis and comparison in time and space. The most common and the most important aggregate in the System of National Accounts is the Gross Domestic Product (GDP).

The results of the production activities according to the particular activities and sectors are shown in the production account. The basic items in the production account are: the gross output, intermediate consumption and gross value added - as their derivation and result of the production activities. The gross value added consists of: compensation of employees, gross operating surplus or mixed income and other taxes on production. GDP is the basic macroeconomic aggregate of the production account and can be calculated according to three approaches: 1) production approach, 2) expenditure approach, and 3) income approach.

According to the production approach, gross domestic product is the sum of gross value added generated in all activities, calculated according to basic prices and corrected for net taxes on products and for FISIM.

According to the expenditure approach, gross domestic product is the sum of the final consumption (households, NPISH and general government consumption), gross capital formation (gross fixed capital formation, changes in inventories and net acquisition of valuables) and the external balance of goods and services (exports of the goods and services less imports of goods and services).

According to the income approach, gross domestic product is the sum of the consumption of fixed capital, compensation of employees, net taxes on products and operating surplus or mixed income.

The gross output is defined as the market value of all produced goods and services that are generated by resident producers during an accounting period. There are three categories of production: a) market production, b) production for own final use and c) other non-market production.

Intermediate consumption at purchaser's prices is the value of products and services that are transformed, used and spent in the production process. Intermediate consumption includes: costs of raw material and equipment, energy costs and spare parts, costs of services, other business costs.

Value added, as the increase in the value of production is equal to the difference between gross output and intermediate consumption. Value added for institutional units is expressed at basic prices that are prices that do not include taxes on products, but do include subsidies on products.

Gross domestic product at market prices is equal to the sum of total value added according to activities, including, on the level of the total economy, items that have not been allocated according to the activities. These are indirectly measured services of financial intermediation (FISIM) and taxes on products and services minus the subsidies on products and services. When the consumption of fixed capital is subtracted from the gross domestic product, the result is net domestic product.

Gross national income equals the sum of gross domestic product and the balance of primary income (from labor and capital) with the rest of the world.

Gross national disposable income equals the sum of gross national income and the balance of current transfers with the rest of the world.

Taxes on products and services are taxes paid according to the produced or delivered goods and service. All taxes on products and import duties, value added tax (VAT), special taxes-excise, etc.

Other taxes on production consist of all taxes that enterprises incur as a result of engaging in production, independently of the quantity or value of goods and services produced or sold.

Subsidies on products and services are non-returnable payments of government institutions to market producers, provided for the production process of enterprises or for the sale or import of products. Subsidies on products are paid per unit of produced goods and services.

Other subsidies on production consist of subsidies except subsidies on products which resident producer units may receive as a consequence of engaging in production. Subsidies on production could not be calculated by unit of goods or services.

FISIM (financial intermediation services indirectly measured) presents the value of services of financial intermediation, which are indirectly measured. FISIM is calculated as the difference between the claims according to interest (active interest) and obligations according to interest (passive interest) for the institutional units for financial intermediation.

Consumption of fixed capital is the value of used fixed capital, during an accounting period, which is used, during the process of production of new products and services. In the national accounts system, every aggregate is expressed in gross and net form. Expressing it in “gross” form means that the consumption of fixed capital had not been subtracted, while “net” form means that the data is shown after the consumption of fixed capital had been subtracted.

Compensation of employees includes all remuneration to employees, both in cash or in kind, that the employees receive in return for their work done, as well as all payments to the compulsory social security schemes of employees.

Gross operating surplus is a residual category of gross value added by the activities that remain after reducing gross value added by compensation of employees and net other taxes on production (subsidies on production have been subtracted from other taxes).

Mixed income is an alternative term for the operating surplus of unincorporated enterprises owned by households, since it is impossible to separate their remuneration for work carried out from their profits as entrepreneur.

TABLES AND GRAPHS

1.1 MAIN AGGREGATES OF NATIONAL ACCOUNTS FOR BiH

	2000 ¹⁾	2001 ¹⁾	2002 ¹⁾	2003 ¹⁾	2004 ¹⁾	2005 ¹⁾	2006 ¹⁾	2007 ¹⁾	2008	2009
Gross domestic product, mio KM	11.789	12.641	13.946	14.689	15.946	17.157	19.272	21.778	24.717	24.004
Net primary income from the rest of the world, mio.KM	1.253	1.163	1.055	925	798	736	611	657	842	752
Gross national income, mio.KM	13.042	13.804	15.001	15.614	16.744	17.893	19.883	22.435	25.559	24.756
Net current transfers from the rest of the world, mio.KM	3.379	3.180	2.933	2.860	3.138	3.206	3.472	3.863	3.775	3.193
Gross national disposable income, mio.KM	16.421	16.984	17.934	18.474	19.882	21.099	23.355	26.298	29.334	27.949
Gross domestic product per capita, KM	3.118	3.328	3.643	3.833	4.150	4.464	5.015	5.668	6.433	6.246
Gross domestic product, mio. EUR	6.028	6.463	7.131	7.510	8.153	8.772	9.854	11.135	12.638	12.273
Gross domestic product per capita, EUR	1.594	1.702	1.863	1.960	2.122	2.283	2.564	2.898	3.289	3.194
Gross domestic product, mio. USD	5.564	5.784	6.715	8.474	10.121	10.909	12.359	15.235	18.491	17.054
Gross domestic product per capita, USD	1.471	1.523	1.754	2.211	2.634	2.839	3.216	3.965	4.813	4.438
Population, mid year estimate, 000 ²⁾	3.781	3.798	3.828	3.832	3.842	3.843	3.843	3.842	3.842	3.843
Annual average exchange rate KM / EUR ³⁾	1,9558	1,9558	1,9558	1,9558	1,9558	1,9558	1,9558	1,9558	1,9558	1,9558
Annual average exchange rate KM / USD ³⁾	2,1189	2,1856	2,0768	1,7335	1,5755	1,5728	1,5594	1,4295	1,3367	1,4075

1.2 GROSS DOMESTIC PRODUCT FOR BiH AND ENTITIES

	2000 ¹⁾	2001 ¹⁾	2002 ¹⁾	2003 ¹⁾	2004 ¹⁾	2005 ¹⁾	2006 ¹⁾	2007 ¹⁾	2008	2009
GDP for BiH, mio KM	11.789	12.641	13.946	14.689	15.946	17.157	19.272	21.778	24.717	24.004
GDP for FBiH ⁴⁾ , mio KM	8.178	8.682	9.361	9.716	10.350	10.945	12.261	13.879	15.647	15.231
GDP for RS ⁵⁾ , mio KM	3.373	3.666	4.208	4.563	5.116	5.763	6.544	7.351	8.489	8.223
GDP for Brcko District, mio KM	238	293	377	410	480	449	467	548	581	550

1.3 SHARE OF ENTITIES IN GDP OF BiH -in %

	2000 ¹⁾	2001 ¹⁾	2002 ¹⁾	2003 ¹⁾	2004 ¹⁾	2005 ¹⁾	2006 ¹⁾	2007 ¹⁾	2008	2009
GDP for BiH	100,00	100,00	100,00	100,00	100,00	100,00	100,00	100,00	100,00	100,00
GDP for FBiH	69,37	68,68	67,12	66,14	64,91	63,79	63,62	63,73	63,30	63,45
GDP for RS	28,61	29,00	30,17	31,06	32,08	33,59	33,96	33,75	34,34	34,26
GDP for Brcko District	2,02	2,32	2,70	2,79	3,01	2,62	2,42	2,52	2,35	2,29

1) Corrected data

2) Source: Bulletin of Agency for Statistics of BiH

3) Source: Bulletin of Central bank of BiH

4) Source: Institute for Statistics of FBiH

5) Source: Institute for Statistics of Republika Srpska Release No. 207/10 and 212/10

2.1 B&H - GROSS VALUE ADDED BY ACTIVITIES AND GROSS DOMESTIC PRODUCT, CURRENT PRICES

	Activity	2000	2001	2002	2003	2004
A	Agriculture, hunting and forestry	1.092.275	1.151.538	1.219.558	1.166.880	1.387.453
01	Agriculture, hunting and related service activities	930.394	983.398	1.033.067	979.939	1.209.906
02	Forestry, logging and related service activities	161.881	168.140	186.491	186.941	177.547
B	Fishing	3.133	2.262	3.060	2.492	3.007
05	Fishing, fish farming and related service activities	3.133	2.262	3.060	2.492	3.007
C	Mining and quarrying	212.365	214.902	223.712	245.781	285.149
10	Mining of coal and lignite; extract.of peat	161.938	161.462	174.797	195.882	212.427
11	Extraction of crude petroleum and natural gas, excluding surveying	0	0	0	0	0
13	Mining of metal ores	15.311	14.909	10.578	9.888	22.964
14	Other mining and quarrying	35.116	38.531	38.337	40.011	49.758
D	Manufacturing	1.203.712	1.270.523	1.381.829	1.505.649	1.645.554
15	Manufacture of food products and beverages	285.529	311.148	379.258	389.572	395.501
16	Manufacture of tobacco products	45.271	51.418	60.078	51.592	57.712
17	Manufacture of textiles	26.297	30.816	27.763	41.726	45.951
18	Manufacture of wearing apparel; dressing and dyeing of fur	49.789	51.108	56.405	65.720	73.626
19	Tanning and dressing of leather	34.689	44.836	44.796	40.993	38.129
20	Mfr. of wood and products of wood and cork, except furniture	151.280	132.359	126.002	123.446	142.333
21	Manufacture of pulp, paper and paper products	8.267	11.717	11.407	17.404	16.741
22	Publishing, printing and reproduction of recorded media	63.668	72.573	82.094	87.684	95.525
23	Manufacture of coke, refined petrol. products and nuclear fuel	-13.474	-8.875	2.047	-1.678	12.058
24	Manufacture of chemicals and chemical products	48.848	36.134	38.305	56.434	58.560
25	Manufacture of rubber and plastic products	28.773	36.423	40.514	44.458	47.100
26	Manufacture of other non-metallic mineral products	101.911	117.963	139.006	147.053	145.035
27	Manufacture of basic metals	69.461	88.935	66.411	77.914	105.085
28	Mfr. of fabricated metal products, except machinery and equipment	102.344	92.669	108.790	135.355	159.829
29	Manufacture of machinery and equipment n.e.c.	28.548	28.451	29.553	28.149	34.498
30	Manufacture of office machinery and computers	8.408	11.272	12.831	14.297	13.953

2005	2006	2007	2008	2009	Activity
1.454.504	1.613.051	1.735.435	1.842.644	1.759.391	A Agriculture, hunting and forestry
1.265.406	1.396.523	1.517.689	1.592.688	1.561.149	01 Agriculture, hunting and related service activities
189.098	216.528	217.746	249.956	198.242	02 Forestry, logging and related service activities
3.206	4.662	7.289	8.036	10.405	B Fishing
3.206	4.662	7.289	8.036	10.405	05 Fishing, fish farming and related service activities
335.456	356.941	432.479	512.295	500.430	C Mining and quarrying
217.477	245.843	296.010	351.530	369.187	10 Mining of coal and lignite; extract.of peat
0	0	0	0	0	11 Extraction of crude petroleum and natural gas, excluding surveying
59.503	56.926	62.950	65.945	51.092	13 Mining of metal ores
58.476	54.173	73.518	94.820	80.150	14 Other mining and quarrying
1.753.055	1.989.250	2.451.520	2.827.418	2.588.548	D Manufacturing
434.777	460.708	530.332	578.400	628.577	15 Manufacture of food products and beverages
47.059	50.636	50.541	51.178	52.547	16 Manufacture of tobacco products
51.390	41.704	50.827	61.871	77.996	17 Manufacture of textiles
73.691	77.027	94.031	99.710	92.230	18 Manufacture of wearing apparel; dressing and dyeing of fur
50.409	81.240	83.556	100.214	91.192	19 Tanning and dressing of leather
144.930	162.711	200.212	216.445	177.808	20 Mfr. of wood and products of wood and cork, except furniture
18.346	21.961	23.229	25.211	35.290	21 Manufacture of pulp, paper and paper products
88.152	96.446	96.540	114.944	115.095	22 Publishing, printing and reproduction of recorded media
-13.165	14.306	37.970	52.457	59.052	23 Manufacture of coke, refined petrol. products and nuclear fuel
63.566	53.696	92.725	103.035	120.999	24 Manufacture of chemicals and chemical products
57.586	65.337	85.707	101.917	114.276	25 Manufacture of rubber and plastic products
166.833	176.628	210.873	261.968	232.831	26 Manufacture of other non-metallic mineral products
109.867	153.055	239.869	256.982	79.076	27 Manufacture of basic metals
180.219	229.795	284.105	364.923	317.448	28 Mfr. of fabricated metal products, except machinery and equipment
44.862	49.598	64.150	94.947	76.442	29 Manufacture of machinery and equipment n.e.c.
15.290	12.846	23.514	29.241	28.072	30 Manufacture of office machinery and computers

2.1 GROSS VALUE ADDED BY ACTIVITIES AND GROSS DOMESTIC PRODUCT, CURRENT PRICES
continued

	Activity	2000	2001	2002	2003	2004
31	Manufacture of electrical machinery and apparatus n.e.c.	31.227	27.184	38.760	31.596	32.089
32	Manufacture of radio, television and comm. equipment and appar.	4.408	5.178	1.057	7.432	4.883
33	Mfr. of medical, precision and optical instr., watches and clocks	19.208	17.764	11.377	14.211	15.961
34	Manufacture of motor vehicles, trailers and semi-trailers	13.903	16.316	16.220	21.921	31.325
35	Manufacture of other transport equipment	1.439	1.856	2.163	2.469	8.865
36	Manufacture of furniture, manufacturing n.e.c.	89.901	88.890	80.048	98.406	94.889
37	Recycling	4.018	4.387	6.945	9.494	15.905
E	Electricity, gas and water supply	593.432	635.850	585.062	708.736	806.189
40	Electricity, gas, steam and hot water supply	501.626	531.839	480.459	595.066	693.041
41	Collection, purification and distribution of water	91.807	104.011	104.603	113.670	113.148
F	Construction	690.808	660.876	655.940	652.503	676.364
45	Construction	690.808	660.876	655.940	652.503	676.364
G	Wholesale and retail trade; repair of motor vehicles, motorcycles	992.399	1.198.270	1.411.197	1.606.564	1.857.754
50	Sale, maintenance and repair of motor vehicles; retail sale of automotive fuel	130.790	171.454	200.780	221.171	241.274
51	Wholesale trade and commission trade, except of motor vehicles and motorcycles	389.416	486.445	631.465	702.879	871.100
52	Retail trade, except of motor vehicles and motorcycles; repairs of personal and household goods	472.193	540.371	578.952	682.513	745.380
H	Hotels and restaurants	310.319	327.543	358.165	381.257	378.925
55	Hotels and restaurants	310.319	327.543	358.165	381.257	378.925
I	Transport, storage and communication	843.837	953.203	1.041.434	1.139.620	1.233.503
60	Land transport; transport via pipelines	264.602	286.237	305.369	303.547	314.851
61	Water transport	0	0	0	0	0
62	Air transport	19.495	12.073	4.403	-3.073	1.271
63	Supporting and auxiliary transport activities; activities of travel agenc.	48.503	57.664	60.518	70.030	76.474
64	Post and telecommunications	511.237	597.229	671.144	769.116	840.906

2005	2006	2007	2008	2009	Activity
38.377	44.285	53.759	58.829	45.561	31 Manufacture of electrical machinery and apparatus n.e.c.
6.133	7.176	6.504	10.111	14.310	32 Manufacture of radio, television and comm. equipment and appar.
13.948	16.201	17.622	20.324	17.797	33 Mfr. of medical, precision and optical instr., watches and clocks
37.912	36.946	48.547	50.139	53.789	34 Manufacture of motor vehicles, trailers and semi-trailers
10.615	8.215	13.881	19.407	18.038	35 Manufacture of other transport equipment
93.148	100.959	117.436	127.649	122.996	36 Manufacture of furniture, manufacturing n.e.c.
19.110	27.774	25.589	27.517	17.126	37 Recycling
849.473	826.193	761.748	1.022.046	1.061.498	E Electricity, gas and water supply
727.793	714.237	632.706	887.200	919.608	40 Electricity, gas, steam and hot water supply
121.680	111.957	129.042	134.847	141.890	41 Collection, purification and distribution of water
752.308	829.412	1.058.668	1.340.151	1.269.079	F Construction
752.308	829.412	1.058.668	1.340.151	1.269.079	45 Construction
2.039.902	2.336.996	2.699.737	3.299.982	3.143.085	G Wholesale and retail trade; repair of motor vehicles, motorcycles
263.871	302.662	353.103	418.975	383.285	50 Sale, maintenance and repair of motor vehicles; retail sale of automotive fuel
941.419	1.119.577	1.307.163	1.699.452	1.610.360	51 Wholesale trade and commission trade, except of motor vehicles and motorcycles
834.613	914.757	1.039.470	1.181.556	1.149.440	52 Retail trade, except of motor vehicles and motorcycles; repairs of personal and household goods
397.476	427.040	468.597	496.686	484.537	H Hotels and restaurants
397.476	427.040	468.597	496.686	484.537	55 Hotels and restaurants
1.278.519	1.352.634	1.492.607	1.661.487	1.648.936	I Transport, storage and communication
353.145	391.866	461.036	543.110	522.949	60 Land transport; transport via pipelines
0	0	0	0	507	61 Water transport
4.238	2.161	5.019	5.949	-4.160	62 Air transport
84.983	98.069	107.540	125.239	118.600	63 Supporting and auxiliary transport activities; activities of travel agenc.
836.153	860.537	919.013	987.190	1.011.041	64 Post and telecommunications

2.1 GROSS VALUE ADDED BY ACTIVITIES AND GROSS DOMESTIC PRODUCT, CURRENT PRICES
continued

	Activity	2000	2001	2002	2003	2004
J	Financial intermediation	313.558	317.540	373.652	423.714	468.739
65	Financial intermediation, except insurance and pension funding	268.653	264.115	322.583	373.920	418.100
66	Insurance and pension funding, except compulsory social security	43.252	49.224	45.548	42.755	41.439
67	Activities auxiliary to financial intermediation	1.654	4.201	5.521	7.039	9.200
K	Real estate, renting and business activities	1.386.008	1.443.413	1.568.405	1.623.914	1.696.797
70	Poslovanje nekretninama	1.061.051	1.099.518	1.152.830	1.150.953	1.166.618
	Of which: imputed rent	1.023.531	1.066.421	1.110.519	1.096.169	1.108.142
71	Renting of machinery and equipment without operator	1.784	4.108	2.355	3.433	5.899
72	Computer and related activities	13.272	13.742	17.382	701	5.995
73	Research and development	19.967	19.454	23.035	18.000	17.475
74	Other business activities	289.934	306.592	372.803	450.827	500.810
L	Public administration and defence; compulsory social security	1.174.920	1.295.856	1.484.583	1.385.437	1.441.577
75	Public administration and defence; compulsory social security	1.174.920	1.295.856	1.484.583	1.385.437	1.441.577
M	Education	517.030	520.819	565.993	590.653	643.938
80	Education	517.030	520.819	565.993	590.653	643.938
N	Health and social work	468.815	483.956	541.663	598.926	638.196
85	Health and social work	468.815	483.956	541.663	598.926	638.196
O	Other community, social and personal service activities	201.662	214.598	237.283	259.122	290.761
90	Sewage and refuse disposal, sanitation and similar activities	43.718	48.065	50.197	48.493	53.732
91	Activities of membership organizations n.e.c.	21.349	18.917	22.049	30.217	34.885
92	Recreational, cultural and spor.act.	82.740	96.828	118.282	133.263	149.795
93	Other service activities	53.856	50.788	46.755	47.149	52.349
	Total of activities	10.004.274	10.691.149	11.651.537	12.291.249	13.453.905
	FISIM (-)	-167.084	-182.316	-221.177	-279.587	-322.626
	Gross value added, basic prices	9.837.190	10.508.833	11.430.360	12.011.662	13.131.279
	Taxes on products and services and import less subsidies (+)	1.952.787	2.132.367	2.516.034	2.677.931	2.814.456
	Gross domestic product (GDP) at market prices	11.789.977	12.641.200	13.946.394	14.689.593	15.945.735

2005	2006	2007	2008	2009	Activity
570.249	633.663	796.851	852.233	869.019	J Financial intermediation
512.646	567.240	715.726	778.483	797.511	65 Financial intermediation, except insurance and pension funding
45.186	51.516	50.035	54.726	49.388	66 Insurance and pension funding, except compulsory social security
12.416	14.907	31.090	19.024	22.120	67 Activities auxiliary to financial intermediation
1.806.895	1.876.598	1.943.215	2.059.518	2.157.793	K Real estate, renting and business activities
1.157.840	1.151.966	1.152.852	1.185.789	1.258.663	70 Poslovanje nekretninama
1.121.939	1.114.312	1.112.128	1.128.851	1.164.414	Of which: imputed rent
11.915	14.436	18.798	22.939	23.223	71 Renting of machinery and equipment without operator
42.039	50.248	67.171	86.685	89.848	72 Computer and related activities
22.288	48.745	41.860	45.036	60.311	73 Research and development
572.812	611.202	662.534	719.068	725.748	74 Other business activities
1.489.260	1.654.973	1.866.652	2.191.304	2.361.376	L Public administration and defence; compulsory social security
1.489.260	1.654.973	1.866.652	2.191.304	2.361.376	75 Public administration and defence; compulsory social security
682.645	782.763	900.944	1.114.566	1.160.528	M Education
682.645	782.763	900.944	1.114.566	1.160.528	80 Education
669.947	730.445	832.401	1.091.845	1.095.379	N Health and social work
669.947	730.445	832.401	1.091.845	1.095.379	85 Health and social work
314.755	349.337	422.394	473.797	482.531	O Other community, social and personal service activities
57.769	61.377	77.400	86.690	93.064	90 Sewage and refuse disposal, sanitation and similar activities
36.740	39.391	45.700	55.316	46.192	91 Activities of membership organizations n.e.c.
164.398	177.678	223.673	248.229	264.367	92 Recreational, cultural and spor.act.
55.848	70.890	75.622	83.561	78.909	93 Other service activities
14.397.650	15.763.960	17.870.537	20.794.008	20.592.535	Total of activities
-408.025	-468.589	-626.870	-682.945	-675.832	FISIM (-)
13.989.625	15.295.371	17.243.667	20.111.063	19.916.703	Gross value added, basic prices
3.167.103	3.976.532	4.534.718	4.606.518	4.087.010	Taxes on products and services and import less subsidies (+)
17.156.728	19.271.903	21.778.384	24.717.581	24.003.713	Gross domestic product (GDP) at market prices

2.2 GROSS VALUE ADDED BY ACTIVITIES AND GROSS DOMESTIC PRODUCT, CURRENT PRICES

											%
Activity		2000	2001	2002	2003	2004	2005	2006	2007	2008	2009
A	Agriculture, hunting and forestry	9,26	9,11	8,74	7,94	8,70	8,48	8,37	7,97	7,45	7,33
01	Agriculture, hunting and related service activities	7,89	7,78	7,41	6,67	7,59	7,38	7,25	6,97	6,44	6,50
02	Forestry, logging and related service activities	1,37	1,33	1,34	1,27	1,11	1,10	1,12	1,00	1,01	0,83
B	Fishing	0,03	0,02	0,02	0,02	0,02	0,02	0,02	0,03	0,03	0,04
05	Fishing, fish farming and related service activities	0,03	0,02	0,02	0,02	0,02	0,02	0,02	0,03	0,03	0,04
C	Mining and quarrying	1,80	1,70	1,60	1,67	1,79	1,96	1,85	1,99	2,07	2,08
10	Mining of coal and lignite; extract.of peat	1,37	1,28	1,25	1,33	1,33	1,27	1,28	1,36	1,42	1,54
11	Extraction of crude petroleum and natural gas, excluding surveying	0,00	0,00	0,00	0,00	0,00	0,00	0,00	0,00	0,00	0,00
13	Mining of metal ores	0,13	0,12	0,08	0,07	0,14	0,35	0,30	0,29	0,27	0,21
14	Other mining and quarrying	0,30	0,30	0,27	0,27	0,31	0,34	0,28	0,34	0,38	0,33
D	Manufacturing	10,21	10,05	9,91	10,25	10,32	10,22	10,32	11,26	11,44	10,78
15	Manufacture of food products and beverages	2,42	2,46	2,72	2,65	2,48	2,53	2,39	2,44	2,34	2,62
16	Manufacture of tobacco products	0,38	0,41	0,43	0,35	0,36	0,27	0,26	0,23	0,21	0,22
17	Manufacture of textiles	0,22	0,24	0,20	0,28	0,29	0,30	0,22	0,23	0,25	0,32
18	Manufacture of wearing apparel; dressing and dyeing of fur	0,42	0,40	0,40	0,45	0,46	0,43	0,40	0,43	0,40	0,38
19	Tanning and dressing of leather	0,29	0,35	0,32	0,28	0,24	0,29	0,42	0,38	0,41	0,38
20	Mfr. of wood and products of wood and cork, except furniture	1,28	1,05	0,90	0,84	0,89	0,84	0,84	0,92	0,88	0,74
21	Manufacture of pulp, paper and paper products	0,07	0,09	0,08	0,12	0,10	0,11	0,11	0,11	0,10	0,15
22	Publishing, printing and reproduction of recorded media	0,54	0,57	0,59	0,60	0,60	0,51	0,50	0,44	0,47	0,48
23	Manufacture of coke, refined petrol. products and nuclear fuel	-0,11	-0,07	0,01	-0,01	0,08	-0,08	0,07	0,17	0,21	0,25
24	Manufacture of chemicals and chemical products	0,41	0,29	0,27	0,38	0,37	0,37	0,28	0,43	0,42	0,50
25	Manufacture of rubber and plastic products	0,24	0,29	0,29	0,30	0,30	0,34	0,34	0,39	0,41	0,48
26	Manufacture of other non-metallic mineral products	0,86	0,93	1,00	1,00	0,91	0,97	0,92	0,97	1,06	0,97
27	Manufacture of basic metals	0,59	0,70	0,48	0,53	0,66	0,64	0,79	1,10	1,04	0,33
28	Mfr. of fabricated metal products, except machinery and equipment	0,87	0,73	0,78	0,92	1,00	1,05	1,19	1,30	1,48	1,32
29	Manufacture of machinery and equipment n.e.c.	0,24	0,23	0,21	0,19	0,22	0,26	0,26	0,29	0,38	0,32
30	Manufacture of office machinery and computers	0,07	0,09	0,09	0,10	0,09	0,09	0,07	0,11	0,12	0,12

2.2 GROSS VALUE ADDED BY ACTIVITIES AND GROSS DOMESTIC PRODUCT, CURRENT PRICES
continued

											%
Activity		2000	2001	2002	2003	2004	2005	2006	2007	2008	2009
31	Manufacture of electrical machinery and apparatus n.e.c.	0,26	0,22	0,28	0,22	0,20	0,22	0,23	0,25	0,24	0,19
32	Manufacture of radio, television and comm. equipment and appar.	0,04	0,04	0,01	0,05	0,03	0,04	0,04	0,03	0,04	0,06
33	Mfr. of medical, precision and optical instr., watches and clocks	0,16	0,14	0,08	0,10	0,10	0,08	0,08	0,08	0,08	0,07
34	Manufacture of motor vehicles, trailers and semi-trailers	0,12	0,13	0,12	0,15	0,20	0,22	0,19	0,22	0,20	0,22
35	Manufacture of other transport equipment	0,01	0,01	0,02	0,02	0,06	0,06	0,04	0,06	0,08	0,08
36	Manufacture of furniture, manufacturing n.e.c.	0,76	0,70	0,57	0,67	0,60	0,54	0,52	0,54	0,52	0,51
37	Recycling	0,03	0,03	0,05	0,06	0,10	0,11	0,14	0,12	0,11	0,07
E	Electricity, gas and water supply	5,03	5,03	4,20	4,82	5,06	4,95	4,29	3,50	4,13	4,42
40	Electricity, gas, steam and hot water supply	4,25	4,21	3,45	4,05	4,35	4,24	3,71	2,91	3,59	3,83
41	Collection, purification and distribution of water	0,78	0,82	0,75	0,77	0,71	0,71	0,58	0,59	0,55	0,59
F	Construction	5,86	5,23	4,70	4,44	4,24	4,38	4,30	4,86	5,42	5,29
45	Construction	5,86	5,23	4,70	4,44	4,24	4,38	4,30	4,86	5,42	5,29
G	Wholesale and retail trade; repair of motor vehicles, motorcycles	8,42	9,48	10,12	10,94	11,65	11,89	12,13	12,40	13,35	13,09
50	Sale, maintenance and repair of motor vehicles; retail sale of automotive fuel	1,11	1,36	1,44	1,51	1,51	1,54	1,57	1,62	1,70	1,60
51	Wholesale trade and commission trade, except of motor vehicles and motorcycles	3,30	3,85	4,53	4,78	5,46	5,49	5,81	6,00	6,88	6,71
52	Retail trade, except of motor vehicles and motorcycles; repairs of personal and household goods	4,01	4,27	4,15	4,65	4,67	4,86	4,75	4,77	4,78	4,79
H	Hotels and restaurants	2,63	2,59	2,57	2,60	2,38	2,32	2,22	2,15	2,01	2,02
55	Hotels and restaurants	2,63	2,59	2,57	2,60	2,38	2,32	2,22	2,15	2,01	2,02
I	Transport, storage and communication	7,16	7,54	7,47	7,76	7,74	7,45	7,02	6,85	6,72	6,87
60	Land transport; transport via pipelines	2,24	2,26	2,19	2,07	1,97	2,06	2,03	2,12	2,20	2,18
61	Water transport	0,00	0,00	0,00	0,00	0,00	0,00	0,00	0,00	0,00	0,00
62	Air transport	0,17	0,10	0,03	-0,02	0,01	0,02	0,01	0,02	0,02	-0,02
63	Supporting and auxiliary transport activities; activities of travel agenc.	0,41	0,46	0,43	0,48	0,48	0,50	0,51	0,49	0,51	0,49
64	Post and telecommunications	4,34	4,72	4,81	5,24	5,27	4,87	4,47	4,22	3,99	4,21

2.2 GROSS VALUE ADDED BY ACTIVITIES AND GROSS DOMESTIC PRODUCT, CURRENT PRICES
continued

											%
Activity		2000	2001	2002	2003	2004	2005	2006	2007	2008	2009
J	Financial intermediation	2,66	2,51	2,68	2,88	2,94	3,32	3,29	3,66	3,45	3,62
65	Financial intermediation, except insurance and pension funding	2,28	2,09	2,31	2,55	2,62	2,99	2,94	3,29	3,15	3,32
66	Insurance and pension funding, except compulsory social security	0,37	0,39	0,33	0,29	0,26	0,26	0,27	0,23	0,22	0,21
67	Activities auxiliary to financial intermediation	0,01	0,03	0,04	0,05	0,06	0,07	0,08	0,14	0,08	0,09
K	Real estate, renting and business activities	11,76	11,42	11,25	11,05	10,64	10,53	9,74	8,92	8,33	8,99
70	Poslovanje nekretninama	9,00	8,70	8,27	7,84	7,32	6,75	5,98	5,29	4,80	5,24
	Of which: imputed rent	8,68	8,44	7,96	7,46	6,95	6,54	5,78	5,11	4,57	4,85
71	Renting of machinery and equipment without operator	0,02	0,03	0,02	0,02	0,04	0,07	0,07	0,09	0,09	0,10
72	Computer and related activities	0,11	0,11	0,12	0,00	0,04	0,25	0,26	0,31	0,35	0,37
73	Research and development	0,17	0,15	0,17	0,12	0,11	0,13	0,25	0,19	0,18	0,25
74	Other business activities	2,46	2,43	2,67	3,07	3,14	3,34	3,17	3,04	2,91	3,02
L	Public administration and defence; compulsory social security	9,97	10,25	10,64	9,43	9,04	8,68	8,59	8,57	8,87	9,84
75	Public administration and defence; compulsory social security	9,97	10,25	10,64	9,43	9,04	8,68	8,59	8,57	8,87	9,84
M	Education	4,39	4,12	4,06	4,02	4,04	3,98	4,06	4,14	4,51	4,83
80	Education	4,39	4,12	4,06	4,02	4,04	3,98	4,06	4,14	4,51	4,83
N	Health and social work	3,98	3,83	3,88	4,08	4,00	3,90	3,79	3,82	4,42	4,56
85	Health and social work	3,98	3,83	3,88	4,08	4,00	3,90	3,79	3,82	4,42	4,56
O	Other community, social and personal service activities	1,71	1,70	1,70	1,76	1,82	1,83	1,81	1,94	1,92	2,01
90	Sewage and refuse disposal, sanitation and similar activities	0,37	0,38	0,36	0,33	0,34	0,34	0,32	0,36	0,35	0,39
91	Activities of membership organizations n.e.c.	0,18	0,15	0,16	0,21	0,22	0,21	0,20	0,21	0,22	0,19
92	Recreational, cultural and spor.act.	0,70	0,77	0,85	0,91	0,94	0,96	0,92	1,03	1,00	1,10
93	Other service activities	0,46	0,40	0,34	0,32	0,33	0,33	0,37	0,35	0,34	0,33
	Total of activities	84,85	84,57	83,55	83,67	84,37	83,92	81,80	82,06	84,13	85,79
	FISIM (-)	-1,42	-1,44	-1,59	-1,90	-2,02	-2,38	-2,43	-2,88	-2,76	-2,82
	Gross value added, basic prices	83,44	83,13	81,96	81,77	82,35	81,54	79,37	79,18	81,36	82,97
	Taxes on products and services and import less subsidies (+)	16,56	16,87	18,04	18,23	17,65	18,46	20,63	20,82	18,64	17,03
	Gross domestic product (GDP) at market prices	100,00	100,00	100,00	100,00	100,00	100,00	100,00	100,00	100,00	100,00

**2.3 B&H - GROSS VALUE ADDED BY ACTIVITIES AND GROSS DOMESTIC PRODUCT, CURRENT PRICES
NOMINAL INDICES**

Previous year=100

Activity	2001	2002	2003	2004	2005	2006	2007	2008	2009
A Agriculture, hunting and forestry	105,43	105,91	95,68	118,90	104,83	110,90	107,59	106,18	95,48
01 Agriculture, hunting and related service activities	105,70	105,05	94,86	123,47	104,59	110,36	108,68	104,94	98,02
02 Forestry, logging and related service activities	103,87	110,91	100,24	94,98	106,51	114,51	100,56	114,79	79,31
B Fishing	72,20	135,29	81,44	120,68	106,60	145,41	156,34	110,25	129,48
05 Fishing, fish farming and related service activities	72,20	135,29	81,44	120,68	106,60	145,41	156,34	110,25	129,48
C Mining and quarrying	101,19	104,10	109,87	116,02	117,64	106,40	121,16	118,46	97,68
10 Mining of coal and lignite; extract.of peat	99,71	108,26	112,06	108,45	102,38	113,04	120,41	118,76	105,02
11 Extraction of crude petroleum and natural gas, excluding surveying	0,00	0,00	0,00	0,00	0,00	0,00	0,00	0,00	0,00
13 Mining of metal ores	97,37	70,95	93,48	232,24	259,12	95,67	110,58	104,76	77,48
14 Other mining and quarrying	109,72	99,50	104,37	124,36	117,52	92,64	135,71	128,97	84,53
D Manufacturing	105,55	108,76	108,96	109,29	106,53	113,47	123,24	115,33	91,55
15 Manufacture of food products and beverages	108,97	121,89	102,72	101,52	109,93	105,96	115,11	109,06	108,68
16 Manufacture of tobacco products	113,58	116,84	85,87	111,86	81,54	107,60	99,81	101,26	102,68
17 Manufacture of textiles	117,19	90,09	150,30	110,12	111,84	81,15	121,88	121,73	126,06
18 Manufacture of wearing apparel; dressing and dyeing of fur	102,65	110,36	116,51	112,03	100,09	104,53	122,08	106,04	92,50
19 Tanning and dressing of leather	129,25	99,91	91,51	93,01	132,21	161,16	102,85	119,94	91,00
20 Mfr. of wood and products of wood and cork, except furniture	87,49	95,20	97,97	115,30	101,82	112,27	123,05	108,11	82,15
21 Manufacture of pulp, paper and paper products	141,73	97,36	152,57	96,19	109,59	119,71	105,77	108,53	139,98
22 Publishing, printing and reproduction of recorded media	113,99	113,12	106,81	108,94	92,28	109,41	100,10	119,06	100,13
23 Manufacture of coke, refined petrol. products and nuclear fuel	65,87	-23,06	-82,00	-718,49	-109,18	-108,66	265,41	138,15	112,57
24 Manufacture of chemicals and chemical products	73,97	106,01	147,33	103,77	108,55	84,47	172,68	111,12	117,44
25 Manufacture of rubber and plastic products	126,59	111,23	109,73	105,94	122,26	113,46	131,18	118,91	112,13
26 Manufacture of other non-metallic mineral products	115,75	117,84	105,79	98,63	115,03	105,87	119,39	124,23	88,88
27 Manufacture of basic metals	128,04	74,67	117,32	134,87	104,55	139,31	156,72	107,13	30,77
28 Mfr. of fabricated metal products, except machinery and equipment	90,55	117,40	124,42	118,08	112,76	127,51	123,63	128,45	86,99
29 Manufacture of machinery and equipment n.e.c.	99,66	103,87	95,25	122,55	130,04	110,56	129,34	148,01	80,51
30 Manufacture of office machinery and computers	134,07	113,83	111,42	97,60	109,58	84,01	183,05	124,35	96,00

2.3 B&H - GROSS VALUE ADDED BY ACTIVITIES AND GROSS DOMESTIC PRODUCT, CURRENT PRICES - continued
NOMINAL INDICES

		Previous year=100								
Activity	2001	2002	2003	2004	2005	2006	2007	2008	2009	
31	Manufacture of electrical machinery and apparatus n.e.c.	87,05	142,58	81,52	101,56	119,60	115,40	121,39	109,43	77,45
32	Manufacture of radio, television and comm. equipment and appar.	117,47	20,41	703,10	65,71	125,58	117,02	90,64	155,45	141,54
33	Mfr. of medical, precision and optical instr., watches and clocks	92,48	64,05	124,91	112,32	87,39	116,15	108,78	115,33	87,57
34	Manufacture of motor vehicles, trailers and semi-trailers	117,36	99,41	135,15	142,90	121,03	97,45	131,40	103,28	107,28
35	Manufacture of other transport equipment	129,05	116,53	114,15	358,99	119,74	77,39	168,96	139,82	92,94
36	Manufacture of furniture, manufacturing n.e.c.	98,88	90,05	122,93	96,43	98,16	108,39	116,32	108,70	96,35
37	Recycling	109,19	158,30	136,71	167,53	120,15	145,34	92,13	107,53	62,24
E	Electricity, gas and water supply	107,15	92,01	121,14	113,75	105,37	97,26	92,20	134,17	103,86
40	Electricity, gas, steam and hot water supply	106,02	90,34	123,85	116,46	105,01	98,14	88,58	140,22	103,65
41	Collection, purification and distribution of water	113,29	100,57	108,67	99,54	107,54	92,01	115,26	104,50	105,22
F	Construction	95,67	99,25	99,48	103,66	111,23	110,25	127,64	126,59	94,70
45	Construction	95,67	99,25	99,48	103,66	111,23	110,25	127,64	126,59	94,70
G	Wholesale and retail trade; repair of motor vehicles, motorcycles	120,74	117,77	113,84	115,64	109,80	114,56	115,52	122,23	95,25
50	Sale, maintenance and repair of motor vehicles; retail sale of automotive fuel	131,09	117,10	110,16	109,09	109,37	114,70	116,67	118,65	91,48
51	Wholesale trade and commission trade, except of motor vehicles and motorcycles	124,92	129,81	111,31	123,93	108,07	118,92	116,76	130,01	94,76
52	Retail trade, except of motor vehicles and motorcycles; repairs of personal and household goods	114,44	107,14	117,89	109,21	111,97	109,60	113,63	113,67	97,28
H	Hotels and restaurants	105,55	109,35	106,45	99,39	104,90	107,44	109,73	105,99	97,55
55	Hotels and restaurants	105,55	109,35	106,45	99,39	104,90	107,44	109,73	105,99	97,55
I	Transport, storage and communication	112,96	109,26	109,43	108,24	103,65	105,80	110,35	111,31	99,24
60	Land transport; transport via pipelines	108,18	106,68	99,40	103,72	112,16	110,96	117,65	117,80	96,29
61	Water transport	0,00	0,00	0,00	0,00	0,00	0,00	0,00	0,00	0,00
62	Air transport	61,93	36,47	-69,80	-41,35	333,49	50,98	232,29	118,52	-69,94
63	Supporting and auxiliary transport activities; activities of travel agenc.	118,89	104,95	115,72	109,20	111,13	115,40	109,66	116,46	94,70
64	Post and telecommunications	116,82	112,38	114,60	109,33	99,43	102,92	106,80	107,42	102,42

2.3 B&H - GROSS VALUE ADDED BY ACTIVITIES AND GROSS DOMESTIC PRODUCT, CURRENT PRICES - continued
NOMINAL INDICES

		Previous year=100								
Activity	2001	2002	2003	2004	2005	2006	2007	2008	2009	
J	Financial intermediation	101,27	117,67	113,40	110,63	121,66	111,12	125,75	106,95	101,97
65	Financial intermediation, except insurance and pension funding	98,31	122,14	115,91	111,82	122,61	110,65	126,18	108,77	102,44
66	Insurance and pension funding, except compulsory social security	113,81	92,53	93,87	96,92	109,04	114,01	97,13	109,38	90,25
67	Activities auxiliary to financial intermediation	254,00	131,43	127,50	130,70	134,97	120,06	208,56	61,19	116,28
K	Real estate, renting and business activities	104,14	108,66	103,54	104,49	106,49	103,86	103,55	105,99	104,77
70	Poslovanje nekretninama	103,63	104,85	99,84	101,36	99,25	99,49	100,08	102,86	106,15
	Of which: imputed rent	104,19	104,14	98,71	101,09	101,25	99,32	99,80	101,50	103,15
71	Renting of machinery and equipment without operator	230,27	57,32	145,79	171,84	201,98	121,16	130,21	122,03	101,24
72	Computer and related activities	103,54	126,49	4,03	855,18	701,27	119,53	133,68	129,05	103,65
73	Research and development	97,43	118,41	78,14	97,08	127,55	218,70	85,87	107,59	133,92
74	Other business activities	105,75	121,60	120,93	111,09	114,38	106,70	108,40	108,53	100,93
L	Public administration and defence; compulsory social security	110,29	114,56	93,32	104,05	103,31	111,13	112,79	117,39	107,76
75	Public administration and defence; compulsory social security	110,29	114,56	93,32	104,05	103,31	111,13	112,79	117,39	107,76
M	Education	100,73	108,67	104,36	109,02	106,01	114,67	115,10	123,71	104,12
80	Education	100,73	108,67	104,36	109,02	106,01	114,67	115,10	123,71	104,12
N	Health and social work	103,23	111,92	110,57	106,56	104,98	109,03	113,96	131,17	100,32
85	Health and social work	103,23	111,92	110,57	106,56	104,98	109,03	113,96	131,17	100,32
O	Other community, social and personal service activities	106,41	110,57	109,20	112,21	108,25	110,99	120,91	112,17	101,84
90	Sewage and refuse disposal, sanitation and similar activities	109,94	104,44	96,61	110,80	107,51	106,25	126,10	112,00	107,35
91	Activities of membership organizations n.e.c.	88,61	116,55	137,05	115,45	105,32	107,22	116,01	121,04	83,51
92	Recreational, cultural and spor.act.	117,03	122,16	112,67	112,41	109,75	108,08	125,89	110,98	106,50
93	Other service activities	94,30	92,06	100,84	111,03	106,68	126,93	106,67	110,50	94,43
	Total of activities	106,87	108,98	105,49	109,46	107,01	109,49	113,36	116,36	99,03
	FISIM (-)	109,12	121,32	126,41	115,39	126,47	114,84	133,78	108,95	98,96
	Gross value added, basic prices	106,83	108,77	105,09	109,32	106,54	109,33	112,74	116,63	99,03
	Taxes on products and services and import less subsidies (+)	109,20	117,99	106,43	105,10	112,53	125,56	114,04	101,58	88,72
	Gross domestic product (GDP) at market prices	107,22	110,32	105,33	108,55	107,59	112,33	113,01	113,50	97,11

**3.1 B&H - GROSS VALUE ADDED BY ACTIVITIES AND GROSS DOMESTIC PRODUCT, CONSTANT PRICES
(AT PRICES OF THE PREVIOUS YEAR)**

	Section of activity	2001	2002	2003	2004	2005
A	Agriculture, hunting and forestry	1.166.865	1.285.063	1.138.326	1.350.487	1.465.389
B	Fishing	3.774	2.950	2.626	2.746	3.392
C	Mining and quarrying	212.883	222.966	243.045	279.052	314.662
D	Manufacturing	1.240.697	1.365.999	1.424.932	1.577.868	1.757.775
E	Electricity, gas and water supply	615.176	605.084	630.985	799.464	848.377
F	Construction	658.501	635.856	678.522	656.020	742.107
G	Wholesale and retail trade; repair of motor vehicles, motorcycles	1.089.750	1.356.118	1.605.939	1.843.558	1.958.835
H	Hotels and restaurants	313.810	350.303	350.733	374.031	373.856
I	Transport, storage and communication	936.932	1.039.153	1.113.827	1.246.185	1.283.451
J	Financial intermediation	309.988	367.419	420.565	489.557	544.104
K	Real estate, renting and business activities	1.376.209	1.519.645	1.641.531	1.687.153	1.761.657
	Of which: imputed rent	1.026.320	1.074.701	1.111.937	1.099.198	1.108.610
L	Public administration and defence; compulsory social security	1.128.764	1.235.062	1.479.907	1.316.819	1.361.866
M	Education	526.063	536.066	586.624	607.196	652.840
N	Health and social work	473.152	499.213	559.068	600.196	652.556
O	Other community, social and personal service activities	193.690	219.471	242.561	272.577	297.954
	Total of activities	10.246.252	11.240.366	12.119.192	13.102.909	14.018.821
	FISIM (-)	-203.864	-222.532	-265.456	-353.707	-396.548
	Gross value added, basic prices	10.042.388	11.017.834	11.853.736	12.749.202	13.622.273
	Taxes on products and services and import less subsidies (+)	2.026.089	2.262.163	2.630.769	2.859.545	2.940.276
	Gross domestic product (GDP) at market prices	12.068.477	13.279.998	14.484.504	15.608.746	16.562.548

000 KM

2006	2007	2008	2009	Section of activity
1.540.064	1.643.490	1.809.547	1.809.333	A Agriculture, hunting and forestry
4.600	5.923	8.992	9.196	B Fishing
366.278	373.633	484.641	470.905	C Mining and quarrying
1.985.681	2.221.137	2.605.964	2.649.601	D Manufacturing
894.083	829.983	835.668	1.030.635	E Electricity, gas and water supply
768.369	949.457	1.237.091	1.243.209	F Construction
2.155.224	2.593.829	2.894.435	3.101.764	G Wholesale and retail trade; repair of motor vehicles, motorcycles
447.784	444.452	458.418	457.821	H Hotels and restaurants
1.357.690	1.423.622	1.602.290	1.592.955	I Transport, storage and communication
654.767	754.447	842.980	903.313	J Financial intermediation
1.908.740	1.956.109	1.978.803	2.042.680	K Real estate, renting and business activities
1.122.013	1.114.223	1.112.208	1.129.026	Of which: imputed rent
1.503.511	1.666.293	1.934.610	2.229.828	L Public administration and defence; compulsory social security
704.998	799.748	935.954	1.134.202	M Education
683.453	749.676	851.588	1.123.461	N Health and social work
351.110	377.266	443.752	475.796	O Other community, social and personal service activities
15.326.351	16.789.066	18.924.733	20.274.700	Total of activities
-503.516	-558.588	-693.922	-760.570	FISIM (-)
14.822.835	16.230.478	18.230.811	19.514.130	Gross value added, basic prices
3.358.365	4.234.919	4.791.029	4.474.547	Taxes on products and services and import less subsidies (+)
18.181.199	20.465.396	23.021.841	23.988.677	Gross domestic product (GDP) at market prices

**3.2 B&H - GROSS VALUE ADDED BY ACTIVITIES AND GROSS DOMESTIC PRODUCT, CONSTANT PRICES
REAL INDICES**

Previous year=100

Section of activity	2001	2002	2003	2004	2005	2006	2007	2008	2009
A Agriculture, hunting and forestry	106,83	111,60	93,34	115,73	105,62	105,88	101,89	104,27	98,19
B Fishing	120,45	130,41	85,81	110,19	112,78	143,48	127,05	123,37	114,44
C Mining and quarrying	100,24	103,75	108,64	113,54	110,35	109,19	104,68	112,06	91,92
D Manufacturing	103,07	107,51	103,12	104,80	106,82	113,27	111,66	106,30	93,71
E Electricity, gas and water supply	103,66	95,16	107,85	112,80	105,23	105,25	100,46	109,70	100,84
F Construction	95,32	96,21	103,44	100,54	109,72	102,13	114,47	116,85	92,77
G Wholesale and retail trade; repair of motor vehicles, motorcycles	109,81	113,17	113,80	114,75	105,44	105,65	110,99	107,21	93,99
H Hotels and restaurants	101,13	106,95	97,92	98,10	98,66	112,66	104,08	97,83	92,18
I Transport, storage and communication	111,03	109,02	106,95	109,35	104,05	106,19	105,25	107,35	95,88
J Financial intermediation	98,86	115,71	112,56	115,54	116,08	114,82	119,06	105,79	105,99
K Real estate, renting and business activities	99,29	105,28	104,66	103,89	103,82	105,64	104,24	101,83	99,18
Of which: imputed rent	100,27	100,78	100,13	100,28	100,04	100,01	99,99	100,01	100,02
L Public administration and defence; compulsory social security	96,07	95,31	99,69	95,05	94,47	100,96	100,68	103,64	101,76
M Education	101,75	102,93	103,65	102,80	101,38	103,27	102,17	103,89	101,76
N Health and social work	100,93	103,15	103,21	100,21	102,25	102,02	102,63	102,31	102,90
O Other community, social and personal service activities	96,05	102,27	102,22	105,19	102,47	111,55	107,99	105,06	100,42
Total of activities	102,42	105,14	104,01	106,60	104,20	106,45	106,50	105,90	97,50
FISIM (-)	122,01	122,06	120,02	126,51	122,91	123,40	119,21	110,70	111,37
Gross value added, basic prices	102,09	104,84	103,70	106,14	103,74	105,96	106,11	105,72	97,03
Taxes on products and services and import less subsidies (+)	103,75	106,09	104,56	106,78	104,47	106,04	106,50	105,65	97,14
Gross domestic product (GDP) at market prices	102,36	105,05	103,86	106,26	103,87	105,97	106,19	105,71	97,05

4.1 B&H - PRODUCTION ACCOUNT BY ACTIVITIES IN 2008, CURRENT PRICES

				000 KM
	Activity	Output	Intermediate consumption	Gross value added
A	Agriculture, hunting and forestry	3.974.033	2.131.390	1.842.644
01	Agriculture, hunting and related service activities	3.521.080	1.928.392	1.592.688
02	Forestry, logging and related service activities	452.953	202.998	249.956
B	Fishing	29.303	21.266	8.036
05	Fishing, fish farming and related service activities	29.303	21.266	8.036
C	Mining and quarrying	978.666	466.369	512.295
10	Mining of coal and lignite; extract of peat	556.346	204.815	351.530
11	Extraction of crude petroleum and natural gas, excluding surveying	0	0	0
13	Mining of metal ores	167.766	101.819	65.945
14	Other mining and quarrying	254.554	159.734	94.820
D	Manufacturing	10.777.318	7.949.899	2.827.418
15	Manufacture of food products and beverages	2.265.429	1.687.029	578.400
16	Manufacture of tobacco products	113.717	62.540	51.178
17	Manufacture of textiles	136.089	74.218	61.871
18	Manufacture of wearing apparel; dressing and dyeing of fur	199.082	99.372	99.710
19	Tanning and dressing of leather	216.763	116.549	100.214
20	Mfr. of wood and products of wood and cork, except furniture	780.391	563.946	216.445
21	Manufacture of pulp, paper and paper products	185.274	160.064	25.211
22	Publishing, printing and reproduction of recorded media	273.741	158.798	114.944
23	Manufacture of coke, refined petrol products and nuclear fuel	394.648	342.191	52.457
24	Manufacture of chemicals and chemical products	375.717	272.682	103.035
25	Manufacture of rubber and plastic products	361.274	259.357	101.917
26	Manufacture of other non-metallic mineral products	707.660	445.693	261.968
27	Manufacture of basic metals	1.855.370	1.598.388	256.982
28	Mfr. of fabricated metal products, except machinery and equipment	1.194.828	829.904	364.923
29	Manufacture of machinery and equipment n.e.c.	306.917	211.970	94.947
30	Manufacture of office machinery and computers	75.766	46.525	29.241
31	Manufacture of electrical machinery and apparatus n.e.c.	259.135	200.306	58.829

4.1 B&H - PRODUCTION ACCOUNT BY ACTIVITIES IN 2008, CURRENT PRICES
continued

000 KM

	Activity	Output	Intermediate consumption	Gross value added
32	Manufacture of radio, television and comm. equipment and appar.	32.694	22.583	10.111
33	Mfr. of medical, precision and optical instr., watches and clocks	60.966	40.643	20.324
34	Manufacture of motor vehicles, trailers and semi-trailers	385.977	335.837	50.139
35	Manufacture of other transport equipment	32.166	12.758	19.407
36	Manufacture of furniture, manufacturing n.e.c.	405.516	277.867	127.649
37	Recycling	158.197	130.679	27.517
E	Electricity, gas and water supply	2.308.844	1.286.797	1.022.046
40	Electricity, gas, steam and hot water supply	2.086.102	1.198.903	887.200
41	Collection, purification and distribution of water	222.742	87.894	134.847
F	Construction	4.259.350	2.919.199	1.340.151
45	Construction	4.259.350	2.919.199	1.340.151
G	Wholesale and retail trade; repair of motor vehicles, motorcycles	5.853.480	2.553.499	3.299.982
50	Sale, maintenance and repair of motor vehicles; retail sale of automotive fuel	693.833	274.858	418.975
51	Wholesale trade and commission trade, except of motor vehicles and motorcycles	3.274.758	1.575.307	1.699.452
52	Retail trade, except of motor vehicles and motorcycles; repairs of personal and household goods	1.884.889	703.334	1.181.556
H	Hotels and restaurants	970.383	473.695	496.686
55	Hotels and restaurants	970.383	473.695	496.686
I	Transport, storage and communication	3.103.653	1.442.165	1.661.487
60	Land transport; transport via pipelines	1.302.156	759.047	543.110
61	Water transport	0	0	0
62	Air transport	26.540	20.590	5.949
63	Supporting and auxiliary transport activities; activities of travel agenc.	317.595	192.356	125.239
64	Post and telecommunications	1.457.362	470.172	987.190
J	Financial intermediation	1.371.304	519.073	852.233
65	Financial intemediation, except insurance and pension funding	1.171.842	393.359	778.483

4.1 B&H - PRODUCTION ACCOUNT BY ACTIVITIES IN 2008, CURRENT PRICES
continued

000 KM

Activity	Output	Intermediate consumption	Gross value added
66 Insurance and pension funding, except compulsory social security	163.055	108.329	54.726
67 Activities auxiliary to financial intermediation	36.407	17.384	19.024
K Real estate, renting and business activities	3.515.230	1.455.715	2.059.518
70 Poslovanje nekretninama	1.531.826	346.037	1.185.789
Of which: imputed rent	1.327.979	199.128	1.128.851
71 Renting of machinery and equipment without operator	41.841	18.903	22.939
72 Computer and related activities	157.676	70.990	86.685
73 Research and development	263.658	218.623	45.036
74 Other business activities	1.520.229	801.162	719.068
L Public administration and defence; compulsory social security	2.975.314	784.009	2.191.304
75 Public administration and defence; compulsory social security	2.975.314	784.009	2.191.304
M Education	1.341.351	226.787	1.114.566
80 Education	1.341.351	226.787	1.114.566
N Health and social work	1.524.144	432.299	1.091.845
85 Health and social work	1.524.144	432.299	1.091.845
O Other community, social and personal service activities	933.959	460.164	473.797
90 Sewage and refuse disposal, sanitation and similar activities	138.255	51.565	86.690
91 Activities of membership organizations n.e.c.	124.830	69.514	55.316
92 Recreational, cultural and spor.act.	508.324	260.094	248.229
93 Other service activities	162.551	78.991	83.561
Total of activities	43.916.332	23.122.326	20.794.008
FISIM (-)		682.945	-682.945
Gross value added, basic prices	43.916.332	23.805.271	20.111.063
Taxes on products and services and import less subsidies (+)			4.606.518
Gross domestic product (GDP) at market prices			24.717.581

4.2 B&H - PRODUCTION ACCOUNT BY ACTIVITIES IN 2009, CURRENT PRICES
000 KM

	Activity	Output	Intermediate consumption	Gross value added
A	Agriculture, hunting and forestry	3.796.081	2.036.689	1.759.391
01	Agriculture, hunting and related service activities	3.431.972	1.870.823	1.561.149
02	Forestry, logging and related service activities	364.108	165.866	198.242
B	Fishing	30.864	20.459	10.405
05	Fishing, fish farming and related service activities	30.864	20.459	10.405
C	Mining and quarrying	851.744	351.314	500.430
10	Mining of coal and lignite; extract of peat	558.281	189.093	369.187
11	Extraction of crude petroleum and natural gas, excluding surveying	0	0	0
13	Mining of metal ores	115.870	64.778	51.092
14	Other mining and quarrying	177.593	97.443	80.150
D	Manufacturing	9.161.690	6.573.142	2.588.548
15	Manufacture of food products and beverages	2.198.284	1.569.707	628.577
16	Manufacture of tobacco products	124.776	72.229	52.547
17	Manufacture of textiles	148.721	70.725	77.996
18	Manufacture of wearing apparel; dressing and dyeing of fur	174.564	82.334	92.230
19	Tanning and dressing of leather	190.472	99.280	91.192
20	Mfr. of wood and products of wood and cork, except furniture	604.749	426.941	177.808
21	Manufacture of pulp, paper and paper products	173.122	137.832	35.290
22	Publishing, printing and reproduction of recorded media	248.936	133.841	115.095
23	Manufacture of coke, refined petrol. products and nuclear fuel	863.081	804.029	59.052
24	Manufacture of chemicals and chemical products	339.914	218.915	120.999
25	Manufacture of rubber and plastic products	327.756	213.480	114.276
26	Manufacture of other non-metallic mineral products	566.842	334.011	232.831
27	Manufacture of basic metals	1.019.943	940.867	79.076
28	Mfr. of fabricated metal products, except machinery and equipment	885.978	568.530	317.448
29	Manufacture of machinery and equipment n.e.c.	228.203	151.762	76.442
30	Manufacture of office machinery and computers	73.587	45.515	28.072
31	Manufacture of electrical machinery and apparatus n.e.c.	204.395	158.834	45.561

4.2 B&H - PRODUCTION ACCOUNT BY ACTIVITIES IN 2009, CURRENT PRICES
continued

000 KM

	Activity	Output	Intermediate consumption	Gross value added
32	Manufacture of radio, television and comm. equipment and appar.	42.752	28.441	14.310
33	Mfr. of medical, precision and optical instr., watches and clocks	39.920	22.122	17.797
34	Manufacture of motor vehicles, trailers and semi-trailers	227.015	173.226	53.789
35	Manufacture of other transport equipment	28.805	10.767	18.038
36	Manufacture of furniture, manufacturing n.e.c.	376.523	253.528	122.996
37	Recycling	73.352	56.226	17.126
E	Electricity, gas and water supply	2.279.190	1.217.693	1.061.498
40	Electricity, gas, steam and hot water supply	2.060.142	1.140.535	919.608
41	Collection, purification and distribution of water	219.048	77.158	141.890
F	Construction	3.575.186	2.306.107	1.269.079
45	Construction	3.575.186	2.306.107	1.269.079
G	Wholesale and retail trade; repair of motor vehicles, motorcycles	5.355.372	2.212.287	3.143.085
50	Sale, maintenance and repair of motor vehicles; retail sale of automotive fuel	619.312	236.028	383.285
51	Wholesale trade and commission trade, except of motor vehicles and motorcycles	2.929.539	1.319.179	1.610.360
52	Retail trade, except of motor vehicles and motorcycles; repairs of personal and household goods	1.806.520	657.080	1.149.440
H	Hotels and restaurants	938.594	454.057	484.537
55	Hotels and restaurants	938.594	454.057	484.537
I	Transport, storage and communication	2.929.064	1.280.128	1.648.936
60	Land transport; transport via pipelines	1.179.336	656.387	522.949
61	Water transport	845	338	507
62	Air transport	27.316	31.477	-4.160
63	Supporting and auxiliary transport activities; activities of travel agenc.	252.747	134.147	118.600
64	Post and telecommunications	1.468.820	457.779	1.011.041
J	Financial intermediation	1.358.721	489.702	869.019
65	Financial intemediation, except insurance and pension funding	1.164.058	366.547	797.511

4.2 B&H - PRODUCTION ACCOUNT BY ACTIVITIES IN 2009, CURRENT PRICES
continued

000 KM

Activity	Output	Intermediate consumption	Gross value added
66 Insurance and pension funding, except compulsory social security	157.558	108.170	49.388
67 Activities auxiliary to financial intermediation	37.105	14.985	22.120
K Real estate, renting and business activities	3.361.047	1.203.254	2.157.793
70 Poslovanje nekretninama	1.575.176	316.514	1.258.663
Of which: imputed rent	1.369.745	205.331	1.164.414
71 Renting of machinery and equipment without operator	43.090	19.867	23.223
72 Computer and related activities	151.759	61.911	89.848
73 Research and development	267.614	207.303	60.311
74 Other business activities	1.323.407	597.659	725.748
L Public administration and defence; compulsory social security	3.116.832	755.456	2.361.376
75 Public administration and defence; compulsory social security	3.116.832	755.456	2.361.376
M Education	1.370.996	210.468	1.160.528
80 Education	1.370.996	210.468	1.160.528
N Health and social work	1.556.053	460.673	1.095.379
85 Health and social work	1.556.053	460.673	1.095.379
O Other community, social and personal service activities	883.576	401.045	482.531
90 Sewage and refuse disposal, sanitation and similar activities	133.234	40.171	93.064
91 Activities of membership organizations n.e.c.	101.618	55.426	46.192
92 Recreational, cultural and spor.act.	491.438	227.071	264.367
93 Other service activities	157.286	78.377	78.909
Total of activities	40.565.009	19.972.472	20.592.535
FISIM (-)		675.832	-675.832
Gross value added, basic prices	40.565.009	20.648.305	19.916.703
Taxes on products and services and import less subsidies (+)			4.087.010
Gross domestic product (GDP) at market prices			24.003.713

5.1 B&H - GENERATION OF INCOME ACCOUNT IN 2005, CURRENT PRICES

000 KM

Section of activity	Gross value added	Compensation of employees	Net other taxes on production	Gross operating surplus / mixed income	Consumption of fixed capital	Net operating surplus / mixed income
A Agriculture, hunting and forestry	1.454.504	191.077	-19.116	1.282.544	156.094	1.126.450
B Fishing	3.206	4.092	-289	-596	1.572	-2.168
C Mining and quarrying	335.456	260.814	10.052	64.591	88.157	-23.566
D Manufacturing	1.753.055	1.241.718	42.853	468.484	482.027	-13.543
E Electricity, gas and water supply	849.473	413.541	28.690	407.242	503.912	-96.670
F Construction	752.308	435.415	20.761	296.132	104.642	191.490
G Wholesale and retail trade; repair of motor vehicles, motorcycles	2.039.902	1.001.485	53.982	984.435	288.469	695.965
H Hotels and restaurants	397.476	195.858	9.817	191.801	45.557	146.243
I Transport, storage and communication	1.278.519	603.240	14.282	660.997	380.967	280.029
J Financial intermediation	570.249	319.649	16.405	234.195	63.858	170.337
K Real estate, renting and business activities	1.806.895	401.700	20.689	1.384.506	572.975	811.531
Of which: imputed rent	1.121.939	0	0	1.121.939	487.483	634.456
L Public administration and defence; compulsory social security	1.489.260	1.331.101	26.206	131.953	131.953	0
M Education	682.645	624.448	12.910	45.287	35.821	9.467
N Health and social work	669.947	564.014	12.579	93.354	73.974	19.379
O Other community, social and personal service activities	314.755	224.568	8.722	81.465	40.475	40.990
Total of activities	14.397.650	7.812.720	258.542	6.326.388	2.970.454	3.355.933
FISIM (-)	-408.025					
Gross value added, basic prices	13.989.625					
Taxes on products and services and import less subsidies (+)	3.167.103					
Gross domestic product (GDP) at market prices	17.156.728					

5.2 B&H - GENERATION OF INCOME ACCOUNT IN 2006, CURRENT PRICES
000 KM

Section of activity	Gross value added	Compensation of employees	Net other taxes on production	Gross operating surplus / mixed income	Consumption of fixed capital	Net operating surplus / mixed income
A Agriculture, hunting and forestry	1.613.051	212.999	-34.504	1.434.557	171.761	1.262.796
B Fishing	4.662	4.242	-8	428	1.725	-1.297
C Mining and quarrying	356.941	292.105	12.156	52.680	88.851	-36.171
D Manufacturing	1.989.250	1.331.619	48.108	609.522	486.296	123.227
E Electricity, gas and water supply	826.193	472.769	24.845	328.580	361.978	-33.398
F Construction	829.412	508.524	21.657	299.230	104.210	195.020
G Wholesale and retail trade; repair of motor vehicles, motorcycles	2.336.996	1.131.637	61.063	1.144.297	316.018	828.279
H Hotels and restaurants	427.040	215.212	10.544	201.285	48.813	152.471
I Transport, storage and communication	1.352.634	650.654	15.299	686.681	412.985	273.695
J Financial intermediation	633.663	356.547	18.460	258.656	64.924	193.732
K Real estate, renting and business activities	1.876.598	459.250	20.833	1.396.514	572.175	824.340
Of which: imputed rent	1.114.312	0	0	1.114.312	484.168	630.144
L Public administration and defence; compulsory social security	1.654.973	1.479.594	28.882	146.497	146.498	-1
M Education	782.763	712.563	14.821	55.379	40.769	14.610
N Health and social work	730.445	621.742	14.072	94.631	73.798	20.833
O Other community, social and personal service activities	349.337	257.158	9.419	82.759	44.385	38.374
Total of activities	15.763.960	8.706.615	265.648	6.791.696	2.935.185	3.856.511
FISIM (-)	-468.589					
Gross value added, basic prices	15.295.371					
Taxes on products and services and import less subsidies (+)	3.976.532					
Gross domestic product (GDP) at market prices	19.271.903					

5.3 B&H - GENERATION OF INCOME ACCOUNT IN 2007, CURRENT PRICES

000 KM

Section of activity	Gross value added	Compensation of employees	Net other taxes on production	Gross operating surplus / mixed income	Consumption of fixed capital	Net operating surplus / mixed income
A Agriculture, hunting and forestry	1.735.435	231.584	-55.293	1.559.144	186.934	1.372.211
B Fishing	7.289	5.708	69	1.511	1.743	-231
C Mining and quarrying	432.479	338.416	12.785	81.278	92.462	-11.184
D Manufacturing	2.451.520	1.549.788	54.549	847.183	561.306	285.877
E Electricity, gas and water supply	761.748	521.552	18.229	221.966	358.745	-136.779
F Construction	1.058.668	599.177	24.152	435.339	112.482	322.858
G Wholesale and retail trade; repair of motor vehicles, motorcycles	2.699.737	1.361.447	68.996	1.269.294	332.970	936.324
H Hotels and restaurants	468.597	257.178	11.769	199.650	52.887	146.764
I Transport, storage and communication	1.492.607	740.483	12.105	740.019	410.668	329.351
J Financial intermediation	796.851	450.755	23.525	322.570	81.379	241.192
K Real estate, renting and business activities	1.943.215	489.199	22.591	1.431.425	579.905	851.520
Of which: imputed rent	1.112.128	0	0	1.112.128	483.220	628.908
L Public administration and defence; compulsory social security	1.866.652	1.673.061	31.343	162.248	162.248	0
M Education	900.944	821.714	16.869	62.361	47.549	14.812
N Health and social work	832.401	716.169	16.065	100.166	74.955	25.211
O Other community, social and personal service activities	422.394	298.454	10.863	113.077	50.492	62.584
Total of activities	17.870.537	10.054.685	268.618	7.547.233	3.106.724	4.440.509
FISIM (-)	-626.870					
Gross value added, basic prices	17.243.667					
Taxes on products and services and import less subsidies (+)	4.534.718					
Gross domestic product (GDP) at market prices	21.778.384					

5.4 B&H - GENERATION OF INCOME ACCOUNT IN 2008, CURRENT PRICES

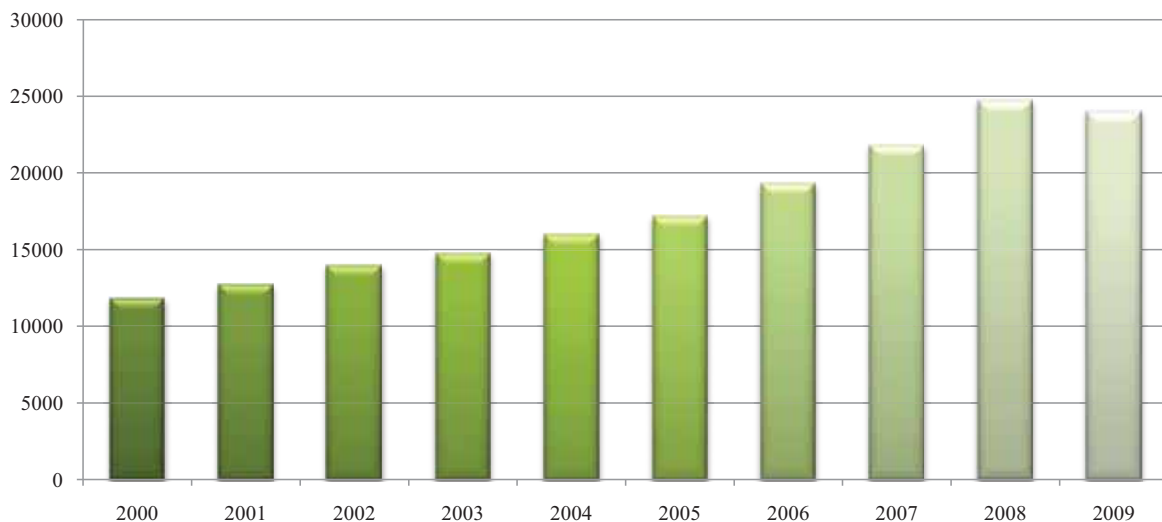
000 KM

Section of activity	Gross value added	Compensation of employees	Net other taxes on production	Gross operating surplus / mixed income	Consumption of fixed capital	Net operating surplus / mixed income
A Agriculture, hunting and forestry	1.842.644	271.810	-50.331	1.621.165	223.661	1.397.504
B Fishing	8.036	7.143	-96	989	1.760	-771
C Mining and quarrying	512.295	396.453	15.326	100.516	99.506	1.010
D Manufacturing	2.827.418	1.845.496	76.022	905.900	606.395	299.505
E Electricity, gas and water supply	1.022.046	600.187	33.353	388.505	362.970	25.536
F Construction	1.340.151	739.798	33.703	566.650	134.410	432.240
G Wholesale and retail trade; repair of motor vehicles, motorcycles	3.299.982	1.662.295	91.953	1.545.734	388.966	1.156.768
H Hotels and restaurants	496.686	266.874	15.056	214.756	55.989	158.768
I Transport, storage and communication	1.661.487	844.777	8.619	808.092	430.268	377.823
J Financial intermediation	852.233	531.876	29.443	290.914	98.071	192.843
K Real estate, renting and business activities	2.059.518	567.229	30.037	1.462.252	599.211	863.041
Of which: imputed rent	1.128.851	0	0	1.128.851	490.486	638.365
L Public administration and defence; compulsory social security	2.191.304	1.980.557	35.418	175.329	175.329	0
M Education	1.114.566	1.023.532	20.391	70.642	56.192	14.451
N Health and social work	1.091.845	966.111	19.874	105.861	82.412	23.449
O Other community, social and personal service activities	473.797	360.773	14.056	98.967	56.046	42.921
Total of activities	20.794.008	12.064.910	372.825	8.356.273	3.371.185	4.985.088
FISIM (-)	-682.945					
Gross value added, basic prices	20.111.063					
Taxes on products and services and import less subsidies (+)	4.606.518					
Gross domestic product (GDP) at market prices	24.717.581					

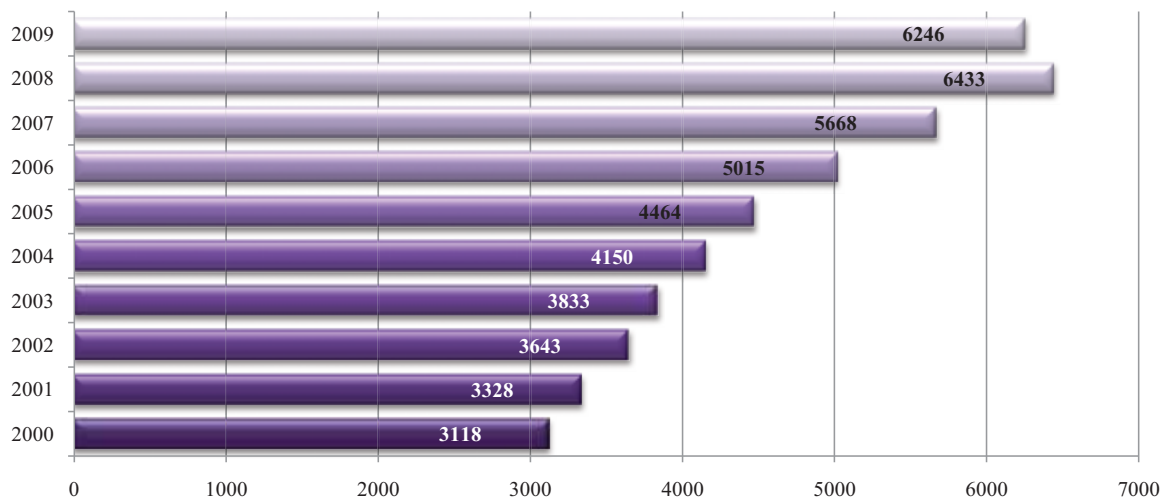
5.5 B&H - GENERATION OF INCOME ACCOUNT IN 2009, CURRENT PRICES
000 KM

Section of activity	Gross value added	Compensation of employees	Net other taxes on production	Gross operating surplus / mixed income	Consumption of fixed capital	Net operating surplus / mixed income
A Agriculture, hunting and forestry	1.759.391	256.721	-47.100	1.549.770	209.196	1.340.574
B Fishing	10.405	7.623	-263	3.045	1.962	1.083
C Mining and quarrying	500.430	407.375	3.417	89.638	103.192	-13.554
D Manufacturing	2.588.548	1.771.426	18.421	798.702	681.604	117.098
E Electricity, gas and water supply	1.061.498	638.290	16.989	406.219	378.885	27.334
F Construction	1.269.079	678.457	9.894	580.728	144.857	435.871
G Wholesale and retail trade; repair of motor vehicles, motorcycles	3.143.085	1.713.160	31.931	1.397.995	422.524	975.470
H Hotels and restaurants	484.537	263.469	4.650	216.418	59.485	156.933
I Transport, storage and communication	1.648.936	871.495	-21.913	799.355	451.632	347.723
J Financial intermediation	869.019	549.470	12.653	306.896	110.446	196.450
K Real estate, renting and business activities	2.157.793	583.692	15.848	1.558.253	610.677	947.577
Of which: imputed rent	1.164.415	0	0	1.164.415	505.938	658.477
L Public administration and defence; compulsory social security	2.361.376	2.175.982	5.895	179.500	179.500	0
M Education	1.160.528	1.078.493	2.583	79.452	57.398	22.055
N Health and social work	1.095.379	975.347	3.167	116.865	90.278	26.588
O Other community, social and personal service activities	482.531	366.731	3.013	112.787	55.890	56.897
Total of activities	20.592.535	12.337.729	59.183	8.195.623	3.557.526	4.638.097
FISIM (-)	-675.832					
Gross value added, basic prices	19.916.703					
Taxes on products and services and import less subsidies (+)	4.087.010					
Gross domestic product (GDP) at market prices	24.003.713					

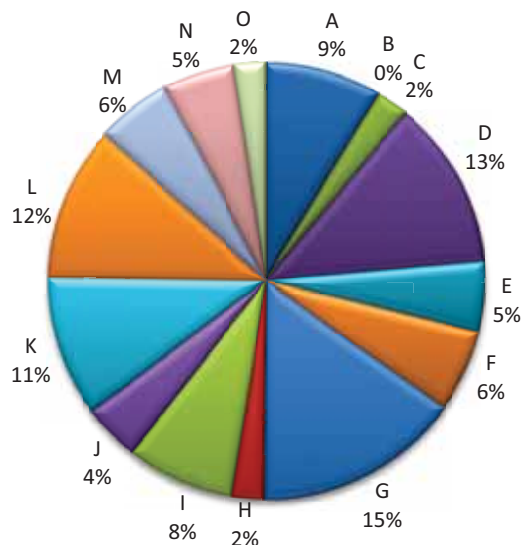
Gross domestic product, million KM



GDP per capita for B&H, KM



Structure of value added at basic prices by activities, 2009



GROSS DOMESTIC PRODUCT BY EXPENDITURE APPROACH

Experimental estimates

2004 – 2009

Introductory remarks

Gross Domestic Product (GDP) based on expenditure approach at current prices is estimated at 28,166 million of KM in 2008 and 27,842 million KM in 2009, with a nominal decrease of 1.15 % from 2008 to 2009. In volume terms (at constant prices) the decrease in GDP was 2.2 % in 2009, which implies a rise in prices of 1.07 % in 2009.

Household consumption expenditure reached the amount of 22,468 million KM in 2008 and 21,630 million KM in 2009. This represents a nominal decrease of 3.73 %. At constant prices (after discounting the effect of price changes), consumption decreased in 2009 by 3.91 %. A breakdown of household consumption expenditure by purposes in nominal and in real terms shows decrease in almost all categories of expenditure in 2009, except for example, expenditure on Alcoholic Beverages and Tobacco, which are nominally increased by 4.55 %. That was affected by growth of price of tobacco product by 12.28 % in 2009. In real terms this category shows decrease of 4.14 %. Expenditure on Housing, Health and Education slightly increased in nominal terms, while in real terms only expenditure on Health and Education increased. All other categories of household consumption expenditure decreased, in nominal and real terms.

General government expenditure is estimated at 5,570 million KM in 2008 and 5,749 million KM in 2009. Expenditure for this category grew 3.22 % in nominal terms and 0.97 % in real terms. The share in GDP grew from 19.78 % in 2008 to 20.65 % in 2009.

Gross fixed capital formation is estimated at 7,565 million KM in 2008 and 5,951 million KM in 2009. In 2009 this category decreased by 21.34 % nominally and by 22.39 % really. The breakdown of gross fixed capital formation by type of assets in 2009, shows that the investment in machinery and equipment decreased by 30.36 % nominally and by 32.69 % really. In 2009 investment in construction decreased by 16.06 % in nominal terms and 16.27 % in real terms. The gross fixed capital formation share in GDP decreased from 26.86 % in 2008 to 21.37% in 2009.

Export of goods and services in 2009 registered decrease with respect to 2008 by 15.83 % in nominal terms and 13.9 % in real terms. Import of goods and services in 2009, also registered decrease with respect to 2008 by 22.75 % in nominal terms and 21.44 % in real terms.

NOTES ON METHODOLOGY

Concepts and definitions

Gross domestic product (GDP) by expenditure approach is defined as total domestic final consumption corrected by external trade balance with the rest of the world. The main components of GDP by expenditure are:

- Household final consumption expenditure,
- Final consumption of non- profit institutions serving households,
- Final consumption of general government,
- Gross capital formation,
- Export and import of goods and services.

Household final consumption expenditure consists of expenditure incurred by resident households on consumption goods and services for the direct satisfaction of human needs and wants. Final consumption expenditure refers to the expenditures incurred by resident households, whether these expenditures are incurred within the economic territory or abroad.

Expenditure should be recorded when the payable is created, that is when the purchaser incur a liability to the seller. This implies that expenditures on goods are to be recorded at the time their ownership changes while expenditures on services are recorded when the delivery of the services is completed.

Household expenditure is recorded at purchasers' prices paid by households including any taxes on products which may be payable at the time of purchase.

Household final consumption expenditure includes the following main components:

- The purchase of goods and services,
- Income in kinds, like goods and services received as income in kind from the employer,
- Goods and services produced as outputs of unincorporated enterprises owned by household that are retained for consumption by members of the household,
- Services produced by domestic paid staff,
- Services of owner-occupied dwellings,
- Explicit and imputed services charges on household uses of financial intermediation services provided by bank, insurance companies, pension funds etc.,
- Payments by households for licenses, permits, etc. which are regarded as purchases of services,
- The purchase of output at not economically significant prices.

Household final consumption expenditure excludes the following main components:

- Social transfers in kind,
- Expenditures by households owning unincorporated enterprises when incurred for business purposes,
- The purchase of dwellings,
- Expenditure on valuables,
- Acquisitions of a non-produced assets,
- All payments which are to be regarded as taxes,
- Voluntary transfers in cash or in kind by households to NPISHs.

Final consumption expenditure of non-profit institutions serving households consist of goods and services which non-profit institutions provide to households free or at prices that are not economically significant.

Their principal resources, apart from occasional sales, are derived from voluntary contributions in cash or in kind from the general public, corporations, and government. They may also receive transfers from non-residents. The non-profit institutions include the following main kinds of NPISHs that provide non-market goods and services to households:

- Trade unions, professional or learned societies, consumers' associations, political parties, churches or religious societies, social, cultural, recreational and sports clubs,
- Charities, relief and aid organizations financed by voluntary transfers in cash or in kind from other institutional units.

Final consumption expenditure of NPISHs includes two separate categories:

- Non-market output other than own-account capital formation, which is measured by production costs less incidental sales,
- Expenditure on market goods and services that are supplied without transformation and free of charge to households.

Final consumption of general government - The general government sector consists of the totality of institutional units, which, in addition to fulfilling their political responsibilities and their role of economic regulation, produce principally non-market services (possibly goods) for individual or collective consumption and redistribute income and wealth.

Final consumption expenditure of general government includes two categories of expenditure:

- Non-market output other than own-account capital formation, which is measured by production costs, less incidental sales
- Purchases by general government of goods and services produced by market producers that are supplied to households, without any transformation, as social transfer in kind.

Final consumption expenditure of general government is measured as difference between non-market output and occasional sales on the market plus purchase of goods and services for free distribution.

Individual government consumption expenditure comprises payments for non-market government services (education, health, social care, culture, sport, etc.) and market goods and services supplied directly to households as social transfer in kind.

Collective government consumption expenditure consists mostly of the provision of security and defense, the maintenance of law and order, legislation and regulation, the protection of environment, research and development etc. All members of the community can benefit from such services.

Gross capital formation

Gross capital formation consists of:

- Gross fixed capital formation,
- Changes in inventories,
- Acquisitions less disposals of valuables.

Gross fixed capital formation consists of producers' acquisitions less disposals of fixed assets during the reference period plus certain additions to the value of non-produced assets realized by the productive activity of producers or institutional units. Fixed assets are tangible or intangible assets produced as outputs from processes of production that are themselves used repeatedly, or continuously, in processes of production for more than one year; including major improvements to tangible non-produced assets and costs associated with the transfers of ownership of non-produced assets.

Gross fixed capital formation is recorded when the ownership of the fixed assets is transferred to the institutional unit that intends to use them in production.

Gross fixed capital formation is valued at purchasers' prices including installation charges and other costs of ownership transfer.

Changes in inventories are measured by the value of the entries into inventories less the value of withdrawals and the value of any recurrent losses of goods held in inventories.

Inventories consist of the following categories:

- Materials and supplies,
- Work in progress,
- Finished goods,
- Goods for resale.

Changes in inventories should be valued at the time of entering the inventories or at the time of withdrawal. The price used should be consistent with valuation of output, intermediate consumption and final uses.

Acquisition less disposals of valuables – Valuables are non-financial assets that are not used primarily for production or consumption, do not deteriorate (physically) over time under normal conditions and that are acquired and held primarily as stores of value. Valuables encompass the following types of goods: precious stones and metals; antiques and other art objects; other valuables such as jewellery of precious stones and metals and collectors items.

Acquisitions of valuables are valued at the purchasers' prices paid for them and disposals of valuables are valued at the prices received by sellers, after deducting any fees paid to intermediaries.

Exports and imports of goods occur when there are changes of ownership of goods between residents and non-residents, regardless of whether there are corresponding physical movements of goods across borders. Exports and imports exclude all transaction in land, buildings and non-movable non-produced assets, and in financial assets.

Exports and imports of goods should be recorded when the ownership of the goods is transferred.

Exports and imports of goods are to be valued free on board at the border of the exporting country (fob). This value consist of:

- The value of the goods at basic prices;
- Plus related transport and distributive services up to that point of the border including the cost of loading on to a carrier for onward transportation, where appropriate.

Exports and imports of services consist of all services rendered by residents to non-residents or vice versa. The services, which belong to export and import of services, must have been produced as outputs from processes of production. They do not include flows of primary income and flows of property income. The more important types of import and export of services are: construction services, installation of equipment, transportation, tourism, insurance, financial services, and license fees.

Exports and imports of services are recorded at the time at which are rendered, which mostly coincides with the time at which the services are produced.

Sources and methods

A description of the main source data available for the compilation of GDP by expenditure components is provided followed by a description of the methods used for the calculation of each of these components:

Sources

Foreign trade data

The main data sources for external trade statistics are custom declarations collected by the Indirect Taxation Authority of BH and taken over by Agency for Statistics. The observation unit is each import and exports shipment with the rest of the world and is uniform as regards the type of goods, country of destination or origin, and for which the custom declaration was filled. The external trade statistics data are produced and published on a monthly basis.

The external trade are monitored according to the special trade system (relaxed definition), which means that beside regular import and export transactions also inward and outward processing as well as processing carried out in custom free zones are included.

Data on imports and exports are available based on the Customs Tariff of BH, which uses a 10-digit code system for the identification of the goods. The first 6 digits correspond to the Harmonized System (HS), the international nomenclature for the classification of foreign trade data. The additional two digits are harmonized with the EU nomenclature (Combined Nomenclature-CN), and the last 2 digits are an extension of the classification to meet specific needs of BH.

The import data are valued in c.i.f. prices and export data in f.o.b. prices.

Household budget survey

The first household budget survey was implemented in Bosnia and Herzegovina in 2004. The main purpose of the survey was collecting information on the structure and levels of consumption expenditure by the main social, economic and territorial characteristics of the households by collecting data from a sample of households by mean of interviews and diaries kept by households on their expenditures and production for self consumption.

The data on household expenditure collected by survey were broken down in about 400 consumption items. Collected data were originally classified using a specific classification for the survey and for needs of expenditure calculation reclassified in accordance to the COICOP and than CPA and NACE classification. Estimates for the total population of BiH were obtained by grossing up the survey's results on national per capita expenditures of each item by the official estimate of the population of the BiH. Sampling errors were calculated for each item to provide an indication of the accuracy of the estimates.

In 2005 and 2006 the survey was not carry out.

The survey was carried out again in 2007, using the same methodology that was applied in 2004. The data from the survey were not available during the compilation of GDP in 2007. The next household budget survey is planned for 2011.

PRODCOM survey

The subject of the PRODCOM survey is industrial production, accomplished at the territory of Bosnia and Herzegovina in the period of one calendar year. The survey collects data on volume and value of production and sales of industrial production, at the detailed level of a single product specified in the nomenclature of industrial products.

The coverage of the PRODCOM survey is not full, and it is based on the address list of statistical units used for annual statistical surveys on industry. The coverage in the Institute for Statistics of FBiH is limited to those reporting units that have ten or more employees while in the Institute for Statistics of Republika Srpska and the Statistical Branch of District Brcko all reporting units from the address list are included in the survey. An adjustment for non-coverage was made using coefficients (the ratio of total output to the output covered by the survey) at the level of the NACE class. All products belonging to a class were adjusted with the same coefficient calculated at the class level.

Balance of payment

Compilation of the balance of payment statistics in Bosnia and Herzegovina is the responsibility of the Central Bank of Bosnia and Herzegovina. For the compilation of gross domestic product by expenditure data on exports and imports of goods and services were used.

Export and import goods are valued by f.o.b. prices. The f.o.b. prices (free on board) of exports and imports is the market value of the goods at the point of uniform valuation, (the custom frontier of the economy from which they are exported); it is equal to the c.i.f. price less the costs of transportation and insurance charges, between the custom frontier of the exporting (importing) country and that of the importing (exporting) country.

Exports and imports of services are classified into three groups: transportation, travel and other services. Transportation services comprise services of transport of goods and passengers.

Investment survey

The survey on the gross fixed capital formation has been carried out annually since 2004 by statistical institutions in Bosnia and Herzegovina. The survey covers all legal units and detailed data on product groups of tangible and intangible fixed assets and costs associated with acquisition of non-produced non-financial assets (land improvement work and transaction costs of ownership of non-produced non-financial assets). In the survey gross fixed capital formation is divided into acquisitions of new assets, acquisition of existing assets and disposals of existing assets.

Output by economic activity

Output by economic activities has been calculated on four-digit level of NACE classification by entities statistical institutions and has been used for estimation of different type services.

Changes in inventories by economic activity

Calculation of changes in inventories is based on accounting statement data. For the compilation of GDP by expenditure, the entities statistical offices have provided data on inventories. Only data for enterprises have been available. Inventories consist of the following categories: finished goods, work in progress, trade goods and raw materials and supplies.

Retail price indices

Until 2005 the Retail Prices Index (RPI) has been used as the main indicator of inflation in the BiH. The RPI has been available only at the level of the entities of Bosnia and Herzegovina.

Consumer price indices

The Consumer Price Index (CPI) is a measure of the average change in prices over time of a market basket of goods and services and is used as measure of consumer price inflation in the entities and in Bosnia and Herzegovina as a whole. The CPI has been compiled starting with the data for January 2005. The period adopted as the base of calculation for the indices is December 2004.

Population estimation

For purposes of GDP compilation by expenditure in final uses, the population estimates made by the BHAS have been used. It is important to mention that these population estimates do not coincide with the aggregate obtained by summing up the respective independent estimates made by the entities.

Methods

Household consumption expenditure

Estimates of household consumption expenditure for the year 2004 are partially based on the results of the household budget survey for that year and on data on foreign trade and domestic production of consumer goods and services. Estimates for other years are based on imports and domestic production statistics and/or extrapolation of the 2004 estimates using relevant indicators. The household consumption of electricity, gas and water is based on the reports of the utility enterprises.

Estimates of consumption of agriculture products are compiled at detailed level of products. For the year 2004 these estimates are mainly based on the results of the HBS 2004. The respective estimates for other years are based on the extrapolation of the quantities consumed in 2004 by the growth rate of the supply of agriculture products and changes in the consumer prices for the respective products, as well as data of turnover of agricultural products in domestic market

Estimates of consumption of manufactured non-food and food products for the year 2004 were based on data on foreign trade statistics, reports by enterprises on production, and the household budget survey. Estimates for the consumption of these items in 2005, 2006, 2007 and 2008 are mainly based on data on the supply of these items to the domestic market derived from the foreign trade statistics and the reports of enterprises on production.

The main sources for the compilation of the estimates of consumption of services were the HBS 2004 and the respective estimates of output by economic activity compiled by the entities' institute of statistics and the Brcko branch of the BHAS. Estimates for other years are mostly based on the extrapolation of the 2004 estimates by volume and price indicators.

Estimates of expenditures of residents abroad and non-residents in the territory of BiH were obtained from the respective estimates of the balance of payments statistics compiled by the CBBH.

Consumption of non-profit institutions serving households (NPISHs)

The estimates of consumption of NPISHs are based on the respective estimates of output of these institutions compiled by the entities' statistical institutions within the framework of their work in compiling GDP estimates based on the production approach. Output of these institutions is measured by the sum of the cost components of production, that is, compensation of employees, consumption of goods and services for production, other taxes on production, and consumption of fixed capital)

General Government consumption expenditure

The estimates are based on the analysis of the data collected and processed by the statistical institutions of BiH on the execution of the budgets by all government institutions comprising the state, the entities, cantons, local authorities, and extra budgetary funds. It also includes the expenditures of the health and pension funds. Consumption is measured as the sum of the production costs (compensation of employees, consumption of goods and services for production, other taxes on production, and consumption of fixed capital).

Estimates of gross fixed capital formation

Estimates on investment in machinery and equipment and motor vehicles are obtained from the detailed analysis of imports and domestic production of capital goods.

Estimates of investment in construction projects other than dwellings are obtained from financial data reported by legal entities in their returns to the annual survey on investment carried out by the institutes of statistics of the entities in conjunction with the BHAS. Estimates on investment on construction by producers not registered as legal entities (entrepreneurs) are based on partial data reported to the statistical institutions supplemented with imputations for the expenditures not covered by the source data.

Estimates on the construction of dwellings are based on the financial data reported by enterprises, partial data on construction by individuals, and assumptions regarding coverage.

Estimates of changes in inventories

These estimates were taken as the differences between the opening and closing book values reported by enterprises and government institutions. No attempt was made for adjusting the data in order to eliminate holding gains (part of the change in value due to changes in prices during the time the inventories are held by producers in the year of reference) due to the lack of appropriate price indices.

Imports and exports of goods and services

The estimates of total imports and exports of goods and services were taken from the corresponding estimates of balance of payment statistics compiled by the CBBH. Imports and exports of services, in accordance with the definitions of the national accounts, do not include payments between residents and non-residents related to primary income (income from property and labour).

Estimates at constant prices

Estimates of GDP by expenditure were calculated at prices of the previous year, thus allowing the comparison of the data between these two years on a quantitative basis (after eliminating the effect of changes in prices). The implicit deflators of the aggregate and its component are of a Paasche type, which implies that they reflect not only changes in prices but also changes in the composition of the expenditures between the years compared. A description of the main sources and methods by component of final expenditures is as follows:

Household consumption expenditure: estimates of consumption of agriculture products at prices of previous year were obtained by revaluating the quantities consumed and using the average prices of previous year. For all other items composing the consumption of households, estimates at constant prices were calculated at the four-digit level of the COICOP classification by deflation of the respective current price values with the most appropriate component of the Consumer Price Index (CPI). Expenditures of resident households abroad were deflated by relevant components of the consumer price indices of the countries of main destination of tourism. The consumption of non-residents was deflated by relevant components of the CPI.

NPISHs consumption expenditure: estimates at constant prices were obtained as the sum of the cost component of consumption recalculated at prices of previous year, where purchases were deflated by the general CPI and remuneration of employees at constant prices are obtained by extrapolation of the previous year data by the change in the number of employees.

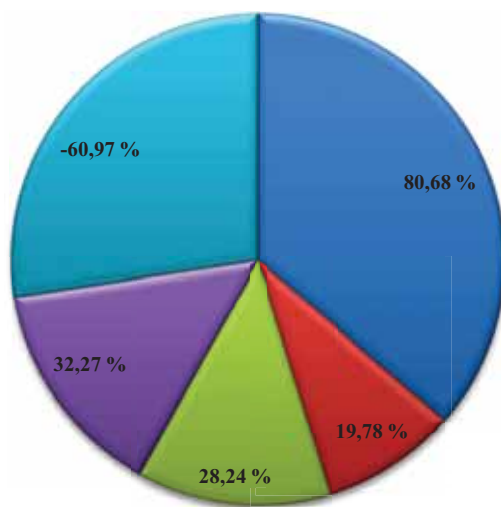
General government consumption expenditure: were obtained as the sum of the cost component at constant prices. Purchases of goods and services were deflated by the general CPI and the remuneration of employees was based on the changes in the number of employees.

Gross fixed capital formation: Calculations of acquisition of machinery and equipment at constant prices were obtained by deflation of the current values. The deflator was obtained as the weighted average of the relevant unit value indices and price indices of the main trade partners for these capital goods. The latter were used as price indicators for items for which the unit value indices were less reliable. Estimates of construction assets (buildings and structures) were deflated using the implicit deflator of output of the construction industry.

Exports and imports of goods and services: Unit value indices of a Paasche type for exports and imports of goods were specifically compiled for the calculations at constant prices. These indices, based on the detailed data of foreign trade were used for the deflation of the respective values of exports and imports at current prices. In cases when the unit value indices, due to low quality of input data were not used, the calculation at constant prices was done by deflating the value of the current period with the producer index of the most important import partners. Exports and imports of services were deflated by price indices.

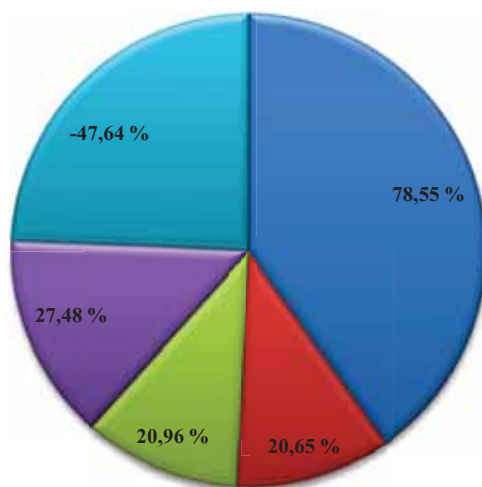
TABLES AND GRAPHS

Gross domestic product by expenditure - current prices 2008
(000 KM)



- Households final consumption expenditure and final consumption expenditure of NPISH
- General government final consumption expenditure
- Gross capital formation
- Export of goods and services
- Import of goods and services

Gross domestic product by expenditure - current prices 2009
(000 KM)



1.1 GROSS DOMESTIC PRODUCT, BY EXPENDITURE APPROACH, AT CURRENT PRICES

	000 KM					
Expenditure categories	2004	2005	2006	2007	2008	2009
Households final consumption expenditure	15.017.526	16.515.383	18.063.983	19.911.556	22.468.038	21.630.506
Final consumption expenditure of NPISH	121.587	168.389	177.000	205.864	256.490	238.734
General government final consumption expenditure	3.621.763	3.814.190	4.187.921	4.697.252	5.570.487	5.749.780
Individual government consumption	1.620.216	1.701.848	1.903.476	2.135.059	2.627.998	2.658.878
Collective government consumption	2.001.547	2.112.342	2.284.445	2.562.193	2.942.489	3.090.902
Gross capital formation	4.442.348	4.802.348	4.339.567	6.460.127	7.953.523	5.836.885
Gross fixed capital formation	3.966.554	4.789.466	4.532.432	6.142.706	7.565.073	5.951.015
Change in inventories	475.794	12.882	-192.865	317.421	388.451	-114.130
Export of goods and services	4.641.400	5.583.000	7.023.300	8.123.700	9.090.486	7.651.200
Goods (fob)	3.279.900	4.082.000	5.255.700	6.046.500	6.888.426	5.711.500
Services	1.361.500	1.501.000	1.767.600	2.077.200	2.202.060	1.939.700
Import of goods and services (minus)	11.155.600	12.643.600	12.650.300	15.012.800	17.172.096	13.264.600
Goods (fob)	10.472.500	11.916.600	11.916.900	14.147.600	16.314.196	12.373.800
Services	683.100	727.000	733.400	865.200	857.900	890.800
Gross domestic product	16.689.024	18.239.709	21.141.471	24.385.699	28.166.929	27.842.505

1.2 GROSS DOMESTIC PRODUCT, BY EXPENDITURE APPROACH, AT CURRENT PRICES, STRUCTURE

Expenditure categories	2004	2005	2006	2007	2008	2009
Households final consumption expenditure	89,98	90,55	85,44	81,65	79,77	77,69
Final consumption expenditure of NPISH	0,73	0,92	0,84	0,84	0,91	0,86
General government final consumption expenditure	21,70	20,91	19,81	19,26	19,78	20,65
Individual government consumption	9,71	9,33	9,00	8,76	9,33	9,55
Collective government consumption	11,99	11,58	10,81	10,51	10,45	11,10
Gross capital formation	26,62	26,33	20,53	26,49	28,24	20,96
Gross fixed capital formation	23,77	26,26	21,44	25,19	26,86	21,37
Change in inventories	2,85	0,07	-0,91	1,30	1,38	-0,41
Export of goods and services	27,81	30,61	33,22	33,31	32,27	27,48
Goods (fob)	19,65	22,38	24,86	24,80	24,46	20,51
Services	8,16	8,23	8,36	8,52	7,82	6,97
Import of goods and services (minus)	66,84	69,32	59,84	61,56	60,97	47,64
Goods (fob)	62,75	65,33	56,37	58,02	57,92	44,44
Services	4,09	3,99	3,47	3,55	3,05	3,20
Gross domestic product	100,00	100,00	100,00	100,00	100,00	100,00

2.1 GROSS DOMESTIC PRODUCT, BY EXPENDITURE APPROACH, AT CONSTANT PRICES
(at prices of previous year)

	000 KM					
Expenditure categories	2004	2005	2006	2007	2008	2009
Households final consumption expenditure	15.017.526	15.931.370	17.250.995	19.131.762	21.107.011	21.589.389
Final consumption expenditure of NPISH	121.587	161.292	168.475	188.866	238.751	239.645
General government final consumption expenditure	3.621.763	3.600.858	3.917.370	4.279.306	4.853.514	5.624.690
Individual government consumption	1.620.216	1.639.640	1.762.843	1.942.081	2.211.873	2.663.494
Collective government consumption	2.001.547	1.961.218	2.154.527	2.337.225	2.641.641	2.961.196
Gross capital formation	4.442.348	4.717.865	4.143.545	6.114.810	7.494.576	5.756.513
Gross fixed capital formation	3.966.554	4.704.983	4.325.315	5.809.953	7.132.991	5.871.078
Change in inventories	475.794	12.882	-181.770	304.857	361.585	-114.565
Export of goods and services	4.641.400	5.391.263	6.439.140	7.828.754	8.610.168	7.827.047
Goods (fob)	3.279.900	3.902.868	4.726.349	5.782.251	6.560.406	5.879.948
Services	1.361.500	1.488.395	1.712.791	2.046.502	2.049.762	1.947.099
Import of goods and services (minus)	11.155.600	12.033.721	11.951.890	14.186.793	16.129.363	13.490.371
Goods (fob)	10.472.500	11.338.344	11.248.726	13.335.218	15.366.107	12.595.993
Services	683.100	695.377	703.164	851.575	763.256	894.378
Gross domestic product	16.689.024	17.768.927	19.967.635	23.356.704	26.174.657	27.546.913

2.2 GROSS DOMESTIC PRODUCT, BY EXPENDITURE APPROACH, AT CONSTANT PRICES, STRUCTURE

	%					
Expenditure categories	2004	2005	2006	2007	2008	2009
Households final consumption expenditure	89,98	89,66	86,39	81,91	80,64	78,37
Final consumption expenditure of NPISH	0,73	0,91	0,84	0,81	0,91	0,87
General government final consumption expenditure	21,70	20,26	19,62	18,32	18,54	20,42
Individual government consumption	9,71	9,23	8,83	8,31	8,45	9,67
Collective government consumption	11,99	11,04	10,79	10,01	10,09	10,75
Gross capital formation	26,62	26,55	20,75	26,18	28,63	20,90
Gross fixed capital formation	23,77	26,48	21,66	24,87	27,25	21,31
Change in inventories	2,85	0,07	-0,91	1,31	1,38	-0,42
Export of goods and services	27,81	30,34	32,25	33,52	32,90	28,41
Goods (fob)	19,65	21,96	23,67	24,76	25,06	21,35
Services	8,16	8,38	8,58	8,76	7,83	7,07
Import of goods and services (minus)	66,84	67,72	59,86	60,74	61,62	48,97
Goods (fob)	62,75	63,81	56,33	57,09	58,71	45,73
Services	4,09	3,91	3,52	3,65	2,92	3,25
Gross domestic product	100,00	100,00	100,00	100,00	100,00	100,00

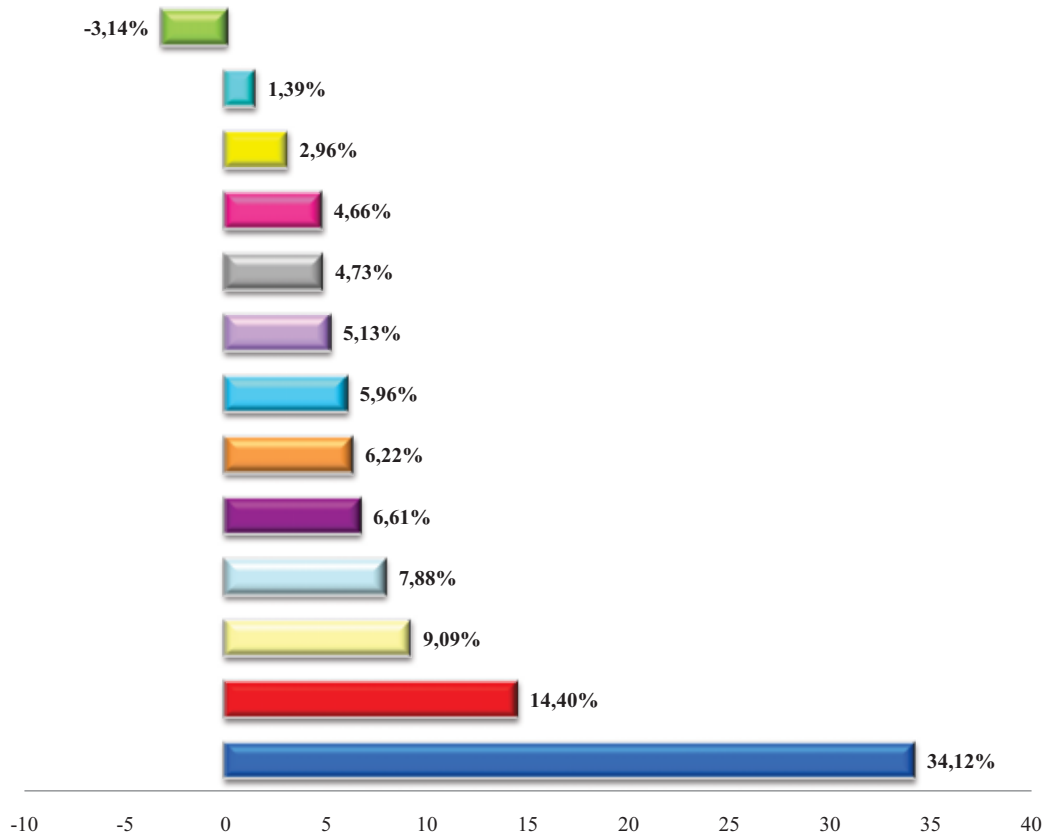
3.1 GROSS DOMESTIC PRODUCT, BY EXPENDITURE APPROACH, NOMINAL INDICES
(previous year = 100)

	000 KM					
Expenditure categories	2004	2005	2006	2007	2008	2009
Households final consumption expenditure	100,00	109,97	109,38	110,23	112,84	96,27
Final consumption expenditure of NPISH	100,00	138,49	105,11	116,31	124,59	93,08
General government final consumption expenditure	100,00	105,31	109,80	112,16	118,59	103,22
Individual government consumption	100,00	105,04	111,85	112,17	123,09	101,18
Collective government consumption	100,00	105,54	108,15	112,16	114,84	105,04
Gross capital formation	100,00	108,10	90,36	148,87	123,12	73,39
Gross fixed capital formation	100,00	120,75	94,63	135,53	123,16	78,66
Change in inventories	-	-	-	-	122,38	-29,38
Export of goods and services	100,00	120,29	125,80	115,67	111,90	84,17
Goods (fob)	100,00	124,46	128,75	115,05	113,92	82,91
Services	100,00	110,25	117,76	117,52	106,01	88,09
Import of goods and services (minus)	100,00	113,34	100,05	118,68	114,38	77,25
Goods (fob)	100,00	113,79	100,00	118,72	115,31	75,85
Services	100,00	106,43	100,88	117,97	99,16	103,83
Gross domestic product	100,00	109,29	115,91	115,35	115,51	98,85

3.2 GROSS DOMESTIC PRODUCT, BY EXPENDITURE APPROACH, REAL INDICES

Expenditure categories	2004	2005	2006	2007	2008	2009
Households final consumption expenditure	100,00	106,09	104,45	105,91	106,00	96,09
Final consumption expenditure of NPISH	100,00	132,66	100,05	106,70	115,98	93,43
General government final consumption expenditure	100,00	99,42	102,71	102,18	103,33	100,97
Individual government consumption	100,00	101,20	103,58	102,03	103,60	101,35
Collective government consumption	100,00	97,99	102,00	102,31	103,10	100,64
Gross capital formation	100,00	106,20	86,28	140,91	116,01	72,38
Gross fixed capital formation	100,00	118,62	90,31	128,19	116,12	77,61
Change in inventories	-	-	-	-	113,91	-29,49
Export of goods and services	100,00	116,16	115,33	111,47	105,99	86,10
Goods (fob)	100,00	118,99	115,79	110,02	108,50	85,36
Services	100,00	109,32	114,11	115,78	98,68	88,42
Import of goods and services (minus)	100,00	107,87	94,53	112,15	107,44	78,56
Goods (fob)	100,00	108,27	94,40	111,90	108,61	77,21
Services	100,00	101,80	96,72	116,11	88,22	104,25
Gross domestic product	100,00	106,47	109,47	110,48	107,34	97,80

Households final consumption expenditure 2009, by COICOP



- Food and non-alcoholic beverages
- Housing
- Transport
- Miscellaneous goods and services
- Restaurants and hotels
- Furnishing
- Alcoholic beverages, tobacco
- Health
- Clothing and footwear
- Recreation and culture
- Communication
- Education
- Net purchases abroad

4.1 HOUSEHOLDS FINAL CONSUMPTION EXPENDITURE, AT CURRENT PRICES

							000 KM
Code	C O I C O P	2004	2005	2006	2007	2008	2009
01.00	Food and non-alcoholic beverages	5.009.303	5.446.493	5.949.685	6.567.571	7.536.367	7.379.567
02.00	Alcoholic beverages, tobacco and narcotics	968.691	1.085.198	1.163.431	1.187.104	1.232.670	1.288.803
03.00	Clothing and footwear	788.867	988.338	892.231	991.194	1.082.306	1.023.393
04.00	Housing, water, electricity, gas and other fuels	2.436.878	2.545.511	2.753.213	2.848.439	3.082.461	3.114.836
05.00	Furnishing, household equipment and routine household maintenance	1.127.924	1.230.269	1.295.537	1.509.125	1.577.551	1.344.599
06.00	Health	626.608	712.216	811.485	923.895	1.065.352	1.109.921
07.00	Transport	1.299.044	1.460.964	1.660.716	1.912.601	2.338.944	1.966.718
08.00	Communication	447.243	468.090	518.310	566.685	637.244	640.353
09.00	Recreation and culture	651.721	783.910	861.753	975.223	1.119.062	1.007.456
10.00	Education	176.693	188.882	224.641	260.733	293.612	300.348
11.00	Restaurants and hotels	1.177.064	1.253.810	1.388.232	1.540.996	1.551.648	1.429.489
12.00	Miscellaneous goods and services	992.491	1.098.400	1.270.549	1.460.990	1.696.022	1.704.623
	Net purchases abroad (minus)	685.000	746.700	725.800	833.000	745.200	679.600
Households final consumption expenditure - national concept		15.017.526	16.515.383	18.063.983	19.911.556	22.468.038	21.630.506

4.2 HOUSEHOLDS FINAL CONSUMPTION EXPENDITURE, AT CURRENT PRICES, STRUCTURE

							%
Code	C O I C O P	2004	2005	2006	2007	2008	2009
01.00	Food and non-alcoholic beverages	33,36	32,98	32,94	32,98	33,54	34,12
02.00	Alcoholic beverages, tobacco and narcotics	6,45	6,57	6,44	5,96	5,49	5,96
03.00	Clothing and footwear	5,25	5,98	4,94	4,98	4,82	4,73
04.00	Housing, water, electricity, gas and other fuels	16,23	15,41	15,24	14,31	13,72	14,40
05.00	Furnishing, household equipment and routine household maintenance	7,51	7,45	7,17	7,58	7,02	6,22
06.00	Health	4,17	4,31	4,49	4,64	4,74	5,13
07.00	Transport	8,65	8,85	9,19	9,61	10,41	9,09
08.00	Communication	2,98	2,83	2,87	2,85	2,84	2,96
09.00	Recreation and culture	4,34	4,75	4,77	4,90	4,98	4,66
10.00	Education	1,18	1,14	1,24	1,31	1,31	1,39
11.00	Restaurants and hotels	7,84	7,59	7,69	7,74	6,91	6,61
12.00	Miscellaneous goods and services	6,61	6,65	7,03	7,34	7,55	7,88
	Net purchases abroad (minus)	4,56	4,52	4,02	4,18	3,32	3,14
Households final consumption expenditure - national concept		100,00	100,00	100,00	100,00	100,00	100,00

5.1 HOUSEHOLDS FINAL CONSUMPTION EXPENDITURE, AT CONSTANT PRICES
(at prices of previous year)

		000 KM					
Code	C O I C O P	2004	2005	2006	2007	2008	2009
01.00	Food and non-alcoholic beverages	5.009.303	5.252.637	5.575.259	6.025.453	6.764.206	7.413.722
02.00	Alcoholic beverages, tobacco and narcotics	968.691	945.525	1.163.211	1.178.823	1.216.985	1.181.637
03.00	Clothing and footwear	788.867	998.448	895.778	1.014.663	1.104.068	1.062.872
04.00	Housing, water, electricity, gas and other fuels	2.436.878	2.428.697	2.582.926	2.813.795	2.921.733	3.010.401
05.00	Furnishing, household equipment and routine household maintenance	1.127.924	1.231.311	1.289.673	1.495.248	1.548.822	1.331.878
06.00	Health	626.608	712.797	751.511	918.004	1.064.475	1.101.752
07.00	Transport	1.299.044	1.346.643	1.569.435	1.817.841	2.108.032	2.192.101
08.00	Communication	447.243	472.303	510.789	551.845	608.744	629.812
09.00	Recreation and culture	651.721	786.662	850.284	978.923	1.099.688	985.272
10.00	Education	176.693	187.138	219.278	248.673	283.385	298.590
11.00	Restaurants and hotels	1.177.064	1.250.248	1.335.612	1.461.960	1.463.002	1.366.387
12.00	Miscellaneous goods and services	992.491	1.064.789	1.212.449	1.447.330	1.636.248	1.700.637
	Net purchases abroad (minus)	685.000	745.828	705.211	820.797	712.375	685.671
Households final consumption expenditure - national concept		15.017.526	15.931.370	17.250.995	19.131.762	21.107.011	21.589.389

5.2 HOUSEHOLDS FINAL CONSUMPTION EXPENDITURE, AT CONSTANT PRICES, STRUCTURE

		%					
Code	C O I C O P	2004	2005	2006	2007	2008	2009
01.00	Food and non-alcoholic beverages	33,36	32,97	32,32	31,49	32,05	34,34
02.00	Alcoholic beverages, tobacco and narcotics	6,45	5,93	6,74	6,16	5,77	5,47
03.00	Clothing and footwear	5,25	6,27	5,19	5,30	5,23	4,92
04.00	Housing, water, electricity, gas and other fuels	16,23	15,24	14,97	14,71	13,84	13,94
05.00	Furnishing, household equipment and routine household maintenance	7,51	7,73	7,48	7,82	7,34	6,17
06.00	Health	4,17	4,47	4,36	4,80	5,04	5,10
07.00	Transport	8,65	8,45	9,10	9,50	9,99	10,15
08.00	Communication	2,98	2,96	2,96	2,88	2,88	2,92
09.00	Recreation and culture	4,34	4,94	4,93	5,12	5,21	4,56
10.00	Education	1,18	1,17	1,27	1,30	1,34	1,38
11.00	Restaurants and hotels	7,84	7,85	7,74	7,64	6,93	6,33
12.00	Miscellaneous goods and services	6,61	6,68	7,03	7,57	7,75	7,88
	Net purchases abroad (minus)	4,56	4,68	4,09	4,29	3,38	3,18
Households final consumption expenditure - national concept		100,00	100,00	100,00	100,00	100,00	100,00

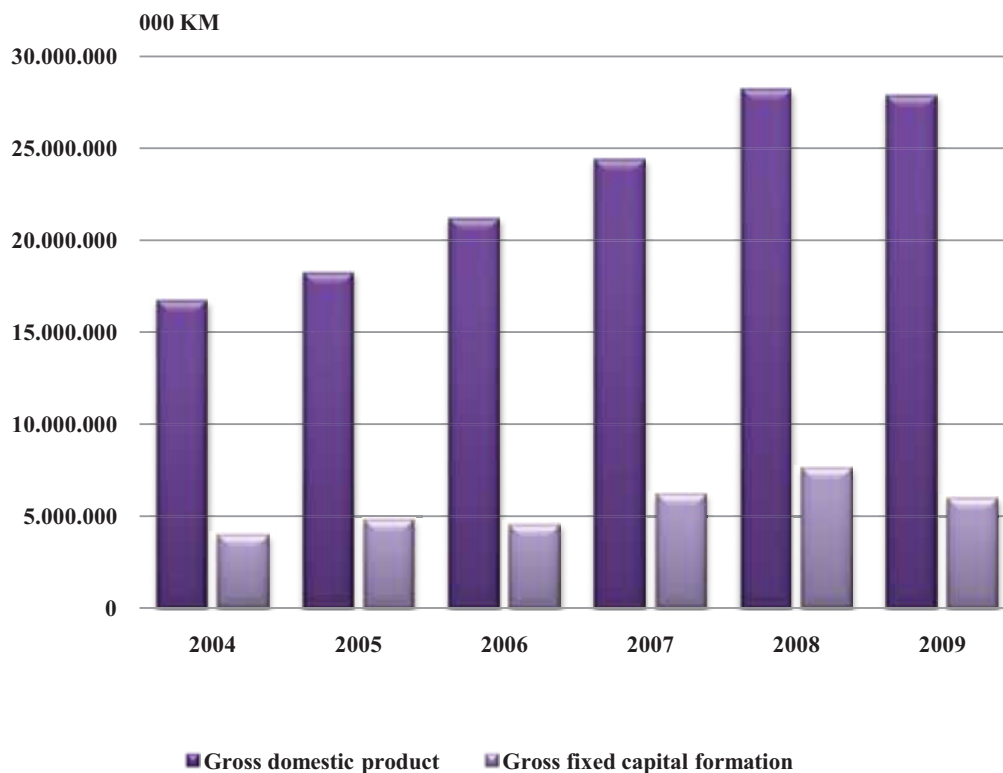
6.1 HOUSEHOLDS FINAL CONSUMPTION EXPENDITURE, NOMINAL INDICES
(previous year = 100)

Code	C O I C O P	2004	2005	2006	2007	2008	2009
01.00	Food and non-alcoholic beverages	100,00	108,73	109,24	110,39	114,75	97,92
02.00	Alcoholic beverages, tobacco and narcotics	100,00	112,03	107,21	102,03	103,84	104,55
03.00	Clothing and footwear	100,00	125,29	90,28	111,09	109,19	94,56
04.00	Housing, water, electricity, gas and other fuels	100,00	104,46	108,16	103,46	108,22	101,05
05.00	Furnishing, household equipment and routine household maintenance	100,00	109,07	105,31	116,49	104,53	85,23
06.00	Health	100,00	113,66	113,94	113,85	115,31	104,18
07.00	Transport	100,00	112,46	113,67	115,17	122,29	84,09
08.00	Communication	100,00	104,66	110,73	109,33	112,45	100,49
09.00	Recreation and culture	100,00	120,28	109,93	113,17	114,75	90,03
10.00	Education	100,00	106,90	118,93	116,07	112,61	102,29
11.00	Restaurants and hotels	100,00	106,52	110,72	111,00	100,69	92,13
12.00	Miscellaneous goods and services	100,00	110,67	115,67	114,99	116,09	100,51
	Net purchases abroad (minus)	100,00	109,01	97,20	114,77	89,46	91,20
Households final consumption expenditure - national concept		100,00	109,97	109,38	110,23	112,84	96,27

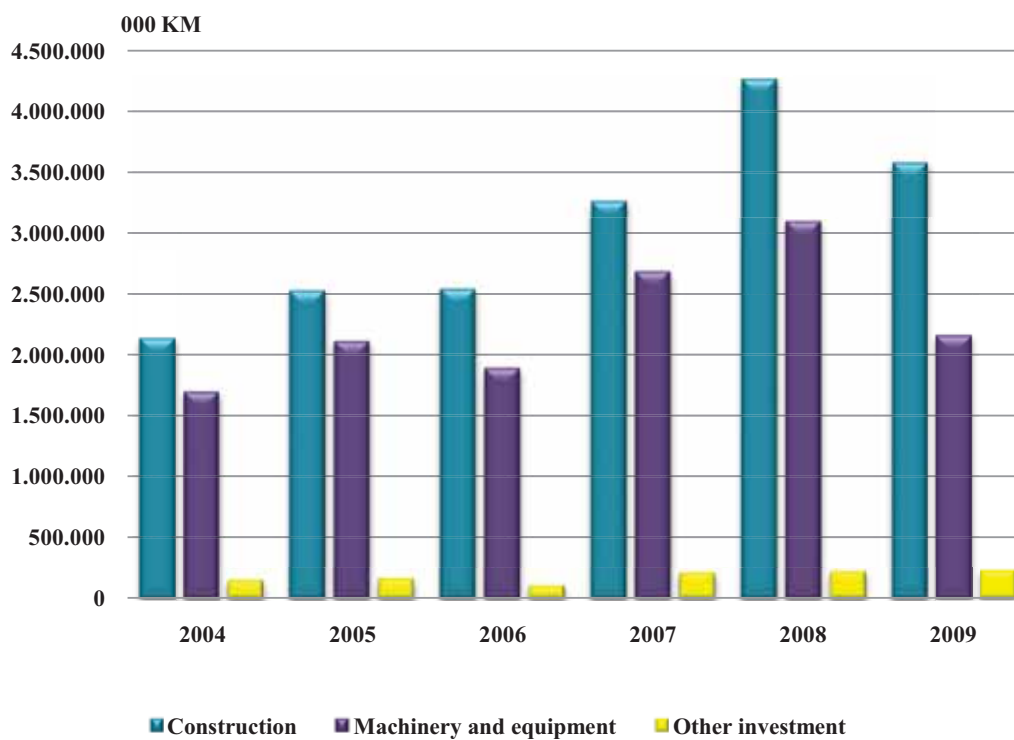
6.2 HOUSEHOLDS FINAL CONSUMPTION EXPENDITURE, REAL INDICES

Code	C O I C O P	2004	2005	2006	2007	2008	2009
01.00	Food and non-alcoholic beverages	100,00	104,86	102,36	101,27	102,99	98,37
02.00	Alcoholic beverages, tobacco and narcotics	100,00	97,61	107,19	101,32	102,52	95,86
03.00	Clothing and footwear	100,00	126,57	90,63	113,72	111,39	98,20
04.00	Housing, water, electricity, gas and other fuels	100,00	99,66	101,47	102,20	102,57	97,66
05.00	Furnishing, household equipment and routine household maintenance	100,00	109,17	104,83	115,42	102,63	84,43
06.00	Health	100,00	113,75	105,52	113,13	115,22	103,42
07.00	Transport	100,00	103,66	107,42	109,46	110,22	93,72
08.00	Communication	100,00	105,60	109,12	106,47	107,42	98,83
09.00	Recreation and culture	100,00	120,71	108,47	113,60	112,76	88,04
10.00	Education	100,00	105,91	116,09	110,70	108,69	101,70
11.00	Restaurants and hotels	100,00	106,22	106,52	105,31	94,94	88,06
12.00	Miscellaneous goods and services	100,00	107,28	110,38	113,91	112,00	100,27
	Net purchases abroad (minus)	100,00	108,88	94,44	113,09	85,52	92,01
Households final consumption expenditure - national concept		100,00	106,09	104,45	105,91	106,00	96,09

Gross domestic product and gross fixed capital formation, current prices



Gross fixed capital formation - structure



7.1 GROSS FIXED CAPITAL FORMATION, CURRENT PRICES

	000 KM					
Purpose of investment	2004	2005	2006	2007	2008	2009
Machinery and equipment	1.694.458	2.108.477	1.888.648	2.681.630	3.093.452	2.154.243
Construction	2.128.558	2.524.061	2.537.749	3.259.472	4.259.350	3.575.186
Other investment	143.538	156.928	106.035	201.604	212.271	221.586
Gross fixed capital formation	3.966.554	4.789.466	4.532.432	6.142.706	7.565.073	5.951.015

7.2 GROSS FIXED CAPITAL FORMATION, CURRENT PRICES, STRUCTURE

	%					
Purpose of investment	2004	2005	2006	2007	2008	2009
Machinery and equipment	42,72	44,02	41,67	43,66	40,89	36,20
Construction	53,66	52,70	55,99	53,06	56,30	60,08
Other investment	3,62	3,28	2,34	3,28	2,81	3,72
Gross fixed capital formation	100,00	100,00	100,00	100,00	100,00	100,00

7.3 GROSS FIXED CAPITAL FORMATION, NOMINAL INDECES

(previous year =100)

Purpose of investment	2004	2005	2006	2007	2008	2009
Machinery and equipment	100,00	124,43	89,57	141,99	115,36	69,64
Construction	100,00	118,58	100,54	128,44	130,68	83,94
Other investment	100,00	109,33	67,57	190,13	105,29	104,39
Gross fixed capital formation	100,00	120,75	94,63	135,53	123,16	78,66

8.1 GROSS FIXED CAPITAL FORMATION, AT CONSTANT PRICES
(at prices of previous year)

	000 KM					
Purpose of investment	2004	2005	2006	2007	2008	2009
Machinery and equipment	1.694.458	2.018.882	1.788.493	2.540.641	3.008.610	2.082.133
Construction	2.128.558	2.535.931	2.436.883	3.070.687	3.926.791	3.566.514
Other investment	143.538	150.170	99.939	198.625	197.590	222.432
Gross fixed capital formation	3.966.554	4.704.983	4.325.315	5.809.953	7.132.991	5.871.078

8.2 GROSS FIXED CAPITAL FORMATION, AT CONSTANT PRICES, STRUCTURE

	%					
Purpose of investment	2004	2005	2006	2007	2008	2009
Machinery and equipment	42,72	42,91	41,35	43,73	42,18	35,46
Construction	53,66	53,90	56,34	52,85	55,05	60,75
Other investment	3,62	3,19	2,31	3,42	2,77	3,79
Gross fixed capital formation	100,00	100,00	100,00	100,00	100,00	100,00

8.3 GROSS FIXED CAPITAL FORMATION, REAL INDICES

Purpose of investment	2004	2005	2006	2007	2008	2009
Machinery and equipment	100,00	119,15	84,82	134,52	112,19	67,31
Construction	100,00	119,14	96,55	121,00	120,47	83,73
Other investment	100,00	104,62	63,68	187,32	98,01	104,79
Gross fixed capital formation	100,00	100,00	90,31	128,19	116,12	77,61