

**GROSS DOMESTIC PRODUCT BY PRODUCTION APPROACH
2005 - 2010**

**GROSS DOMESTIC PRODUCT BY EXPENDITURE APPROACH
Experimental estimates
2005 - 2010**

National Accounts



Bosnia and Herzegovina



Agency for Statistics of
Bosnia and Herzegovina

Sarajevo, December 2011

Publisher: Agency for Statistics of Bosnia and Herzegovina,
Bosnia and Herzegovina, Sarajevo, Zelenih beretki 26

Responsible: Mr Zdenko Milinović, director

Tables prepared by: Ms Dijana Mlikota, Ms Edina Kozić, Ms Aida Kesten, Ms Ivana Haračić,
Ms Vanja Papaz

Graphs prepared by: Ms Dijana Mlikota, Ms Edina Kozić, Ms Aida Kesten, Ms Ivana Haračić
Ms Vanja Papaz

Proofread by: Ms Selveta Hot

Design and pre-press: Ms Lejla Rakić Bekić

Printed by: Avery d.o.o.

Users are kindly requested to mention data source

CONTENTS

FOREWORD	5
GROSS DOMESTIC PRODUCT BY PRODUCTION AND INCOME APPROACH	7
NOTES ON METHODOLOGY	11
TABLES AND GRAPHS	17
Table 1.1 Main aggregates of national accounts for BiH, current prices, 2005 – 2010	19
Table 1.2 Gross domestic product for BiH and entities, current prices, 2005 – 2010	19
Table 1.3 Share of entities in GDP of BiH, 2005 – 2010	19
Table 2.1 BiH – Gross value added by activities and gross domestic product, current prices, 2005 – 2010	20
Table 2.2 BiH – Gross value added by activities and gross domestic product, current prices, structure	23
Table 2.3 BiH – Gross value added by activities and gross domestic product, current prices, nominal indices	26
Table 3.1 Gross value added by activities and gross domestic product, constant prices, 2006 – 2010	32
Table 3.2 Gross value added by activities and gross domestic product, constant prices, real indices	29
Table 4.1 BiH – Production account by activities in 2009, current prices	30
Table 4.2 BiH – Production account by activities in 2010, current prices	31
Table 5.1 BiH – Generation of income account in 2005, current prices	37
Table 5.2 BiH – Generation of income account in 2006, current prices	38
Table 5.3 BiH – Generation of income account in 2007, current prices	39
Table 5.4 BiH – Generation of income account in 2008, current prices	40
Table 5.5 BiH – Generation of income account in 2009, current prices	41
Table 5.6 BiH – Generation of income account in 2010, current prices	42
GRAPHS	43

GROSS DOMESTIC PRODUCT BY EXPENDITURE APPROACH	45
NOTES ON METHODOLOGY	49
TABLES AND GRAPHS	59
Table 1.1 Gross domestic product by expenditure approach, current prices, 2005, 2006, 2007, 2008, 2009 and 2010	61
Table 1.2 Gross domestic product by expenditure approach, current prices, 2005, 2006, 2007, 2008, 2009 and 2010; structure	61
Table 2.1 Gross domestic product by expenditure approach, constant prices, 2005, 2006, 2007, 2008, 2009 and 2010	62
Table 2.2 Gross domestic product by expenditure approach, constant prices, 2005, 2006, 2007, 2008, 2009 and 2010; structure	62
Table 3.1 Gross domestic product by expenditure approach, nominal indices	63
Table 3.2 Gross domestic product by expenditure approach, real indices	63
Table 4.1 Households final consumption expenditure, current prices, 2005, 2006, 2007, 2008, 2009 and 2010	65
Table 4.2 Households final consumption expenditure, current prices, 2005, 2006, 2007, 2008, 2009 and 2010; structure	65
Table 5.1 Households final consumption expenditure, constant prices, 2005, 2006, 2007, 2008, 2009 and 2010	66
Table 5.2 Households final consumption expenditure, constant prices, 2005, 2006, 2007, 2008, 2009 and 2010; structure	66
Table 6.1 Households final consumption expenditure, nominal indices	67
Table 6.2 Households final consumption expenditure, real indices	67
Table 7.1 Gross fixed capital formation, current prices, 2005, 2006, 2007, 2008, 2009 and 2010	69
Table 7.2 Gross fixed capital formation, current prices, 2005, 2006, 2007, 2008, 2009 and 2010; structure	69
Table 7.3 Gross fixed capital formation, nominal indices	69
Table 8.1 Gross fixed capital formation, constant prices, 2005, 2006, 2007, 2008, 2009 and 2010	70
Table 8.2 Gross fixed capital formation, constant prices, 2005, 2006, 2007, 2008, 2009 and 2010; structure	70
Table 8.3 Gross fixed capital formation, real indices	70

FOREWORD

The Bulletin “National Accounts - Gross Domestic Product for Bosnia and Herzegovina” was prepared as a part of the regular activities of the Agency for Statistics of Bosnia and Herzegovina on the aggregation and publication of data at the level of Bosnia and Herzegovina. Data in the Bulletin presents results of the joint work of the Agency for Statistics of BiH, the Federal Office for Statistics, Republic Srpska Institute for Statistics and BHAS Branch Office in Brcko District.

Main aggregates of national accounts for Bosnia and Herzegovina are presented in this publication. Gross domestic product of Bosnia and Herzegovina has been calculated according to the methodology of System of National Accounts – SNA 93 and European System of National Accounts ESA95. In Bosnia and Herzegovina, the initial phase of this methodology. Activities on further application of these recommendations depend on volume, quality and content of primary statistical data the system is based on, and directly will reflect on future development of the System. Final task is introduction and consistent application of SNA methodology and recommendations in order to achieve comprehensive system of national accounts for Bosnia and Herzegovina.

Bulletin is consisted from two parts. Data of gross domestic product (GDP) by production approach at current and constant prices for period of 2005-2010 and gross domestic product by income approach for period of 2005-2010 are given in the first part. In line with methodologies recommendations of the SNA93 and ESA95, some methodological improvements in estimation of gross domestic product by the production approach.

Data of gross domestic product by expenditure approach at current and constant prices for period of 2005-2010 are given in the second part.

With a view to improving National Accounts statistics of Bosnia and Herzegovina, Agency for statistics of BiH has started compilation of Gross domestic product by expenditure approach. The year 2004 was chosen as the starting reference period for the construction of the series based on available data source. Since there are still important gaps on the basic statistics available for the compilation of the national accounts and the quality of some statistics based on administrative sources or statistical survey need improvements, composed estimates should be considered as experimental.

It should be noted that GDP estimates can be produced using three different approaches (production, expenditure, and income), each one showing a different aspect of the economic picture. Although theoretically the measurements of GDP using different approaches should coincide, in practice, discrepancies arise due to the differences in data sources and methods used. It is common practice that countries present these discrepancies explicitly in their publications, at the same time that efforts are made to keep them at a reasonable small relative magnitude. In the case of BiH the official figures of GDP are based on the production approach, thus showing the creation of value and its growth rate from year to year by industrial origin of economic activity, whereas the GDP estimates by final expenditures show how the value created through economic activity is spent by the different economic sectors in consumption, investment or sold abroad as exports

We are fully convinced that the data presented will facilitate a comprising observance of economic activity and offer the crucial information for a wide range of users.

Sarajevo, December 2011

Director

ABBREVIATIONS:

SNA	- System of National Accounts
ESA	- European System of Accounts
GDP	- Gross Domestic Product
FISIM	- Financial Intermediation Services Indirectly Measured
EU NACE Rev.1.1	- Classification of Economic Activities in the European Community
CPA	- Classification of Products by Activity
COICOP	- Classification of Individual Consumption by Purpose
PRODCOM	- Nomenclature of industrial products
CPI	- Consumer Price Index
RPI	- Retail Price Index
NPISH	- Non Profit Institutions Serving Households
BoP	- Balance of Payments

SYMBOLS:

-	- no occurrence
0	- values less than 0.5 of the unit of measure used
...	- data not available
--	- data cannot be shown

GROSS DOMESTIC PRODUCT BY PRODUCTION AND INCOME APPROACH

Introductory remarks

In calculating the gross domestic product for Bosnia and Herzegovina and the entities the methodology of United Nations “System of National Accounts 1993”– SNA93 and its European version “European System of national accounts 1995”– ESA95 is used.

In order to determine the gross domestic product for BiH and the entities, all available statistical data of the businesses (enterprises, banks, insurance societies, institutions, authority bodies and other subjects), which are residents in the territory of BiH, as well as data regarding agricultural and non-agricultural production (holdings and shops) done within the household, are used.

The calculation is based on the data of business enterprises registered and allocated according to the Classification of activities, which has been harmonized with the European classification NACE – Rev.1.1. The business enterprises are at present, for the GDP calculation, grouped, as institutional units, according to the areas of activities, according to the headquarters and main activity, and not according to the units of homogenous activity.

The recalculation of gross domestic product into USD and EUR is based on the average annual exchange rate and the calculation of GDP per capita is computed according to the estimated total population in mid-year.

GDP based on production approach at current prices is estimated at 24,584 millions of KM in 2010 with a nominal increase of 2.2% from 2009 to 2010.

Gross domestic product per capita is estimated 6,397 of KM or 4,331 of USD in 2010.

Data of Central Bank of BiH about net primary income from the rest of the world and net current transfers from the rest of the world are used for calculation gross national income and gross national disposable income. Gross national income for BiH in 2010 is estimated at 25,075 millions KM and gross national disposable income is estimated at 28,410 millions KM.

In the basic activities (agriculture, fishing, mining, manufacturing industry, electricity and construction) is made 34.2% of value added and in services activities 65.8%. The highest share in GDP has value added of Trade by 13.3%, Manufacturing by 11.2%, Public administration by 9.3 % and Real estate by 9.1%.

Observed by activities decrease of the gross value added was recorded in: Construction (15.2%), Public administration (3.2%), Fishing (36.3%), Agriculture (1.4%) and Mining (1.4%).

The largest growth of the gross value added was recorded in: Hotels and restaurants (7.5%) and Manufacturing (6.2%).

The main contributors to the GDP growth rate of 2.9% were: Trade (13.5%), Manufacturing (11.4%), Public administration (9.5%), Real estate (9.3%).

GDP at constant prices (prices of previous year) for 2010 is estimated at 23,224 millions KM. In volume terms (at constant prices) the increase in GDP was 0.7%.

NOTES ON METHODOLOGY

Special remarks for data users

The attention of data users is drawn to some facts that could be useful in understanding the content and the size of the aggregates presented in the Bulletin.

The calculation of the gross domestic product has been determined based on the existing data sources, as well as based on official statistical surveys, which had been done in the statistical institutions. The number of and the content of the surveys do not yet satisfy the needs of the national accounts statisticians in order to meet the demands of full implementation of the above-mentioned international methodologies.

One of the general methodological characteristics of National Accounts is possibility of making revisions – performing corrections not only to original estimates and preliminary results, but also to final calculations and published statistical data. In the System National Accounts, revisions generally occur due to the introduction of new data sources, the essential improvements to the existing ones, the changes of classifications or establishment of new principles, regulations and international recommendations.

In the first part of this Bulletin the estimates of GDP by production approach and GDP by income approach. GDP data by production approach at current prices are presented at the level divisions (A60), while data at constant prices are presented at the level section (A17). GDP data by income approach are presented at current prices at level section (A17).

In order to ensure consistency in application of methodological principles of SNA93 and ESA95, methodological improvements have been done in estimation GDP by production approach for 2010. Methodological improvements are related to the value added calculation for insurance companies. Mentioned revision of the data requires the needs for revision of previously calculated and published data series of GDP for period 2005-2009, too. Thus provide comparable data series for macroeconomic analysis. Also corrections of value added have been done by divisions of Classification of Activity for unincorporated enterprises within households.

Calculation of gross domestic product at constant prices is very important indicator of measuring of the dynamics and level of economic development deprived from the influence of prices. For the calculation of GDP at constant prices the concept of the single indicator method is used, due to the lack of adequate deflators of intermediate consumption. The most common single indicator used is a volume index of output. Applying a single indicator has implicit the assumption of fixed I/O coefficients. Single **extrapolation** method presents extrapolation of output in the base year by adequate volume index. Single **deflation** method presents deflation of output in current year by adequate price indices. The estimates were compiled for each component of the production account (output, intermediate consumption and value added) and at prices of previous year.

Non observed economy (NOE) estimations are included in calculation of GDP. Illegal activities are not included. The estimate of imputed rental of owner-occupied dwellings is included in the GDP.

Brcko District exists as a separate administrative unit since 2000, estimate of gross domestic product for 2000 and next years are made on the basis of available data that are compiled and processed by the Brcko District Bureau of Statistics, now branch office of BHAS.

Agency for Statistics of Bosnia and Herzegovina calculates components of production account and income account for the Institutions of General Government of Bosnia and Herzegovina and the Central Bank of BiH. The calculated results of components of GDP are allocated among the entities according to the same principle that is applied for financing the activity of BiH institutions from entities' budgets and from 2006 the calculated data are allocated to the entities using percentages for redistribution of collected indirect taxes from single account of Indirect Taxation Authorities of BiH to the entities.

Financial intermediation services indirectly measured (FISIM) presents an interest margin and it is part of output of financial sector, is calculated as the difference between the claims of interest (active interest) and interest obligations under (passive interest) for the institutional units of financial intermediation. FISIM is not allocated by activities; value added on total economy is corrected by FISIM. In such a case the whole of the value of the output of FISIM is treated as intermediate consumption with zero output and negative value added equal in size but opposite in sign from the intermediate consumption. Value of FISIM is included in the gross value added and net operating surplus in generation of income accounts.

Concepts and definitions

The system of National Accounts is defined as a set of consistent, coherent, integrated and detailed macroeconomic accounts, balance sheets and tables which secure a systematic, comparable and detailed review of economic activities of a country. SNA is based on a unique concept, definitions and rules international standard which are described in detail in two reference manuals: the “System of national Accounts 1993” (SNA93) and the “European System of National Accounts 1995” (ESA95). The SNA93 provides more theoretical frame while the ESA95 includes additional details in order to come closer to the European environment and practices.

Integrated national accounts provide a comprehensive picture of the economy, which facilitates understanding of the economic relations among economic subjects and the structure and dynamic of the main aggregates describing the economic development.

System National Accounts is an internationally accepted standard for macroeconomic accounts based on border concept of production. According to this concept the production covers, besides material production and material services, also, non-material services in education, health and social care, culture, banking and insurance organizations, services of government organizations on all levels and all other services that are not in connection with material production.

The System National Accounts contains value categories called aggregates. The Aggregates are the complex value categories that measure the results of activities of the whole economy observed from certain aspect. They are the summary indicators, key values for macroeconomic analysis and comparison in time and space. The most common and the most important aggregate in the System of National Accounts is the Gross Domestic Product (GDP).

The results of the production activities according to the particular activities and sectors are shown in the production account. The basic items in the production account are: the gross output, intermediate consumption and gross value added - as their derivation and result of the production activities. The gross value added consists of: compensation of employees, gross operating surplus or mixed income and other taxes on production. GDP is the basic macroeconomic aggregate of the production account and can be calculated according to three approaches: 1) production approach, 2) expenditure approach, and 3) income approach.

According to the production approach, gross domestic product is the sum of gross value added generated in all activities, calculated according to basic prices and corrected for net taxes on products and for FISIM.

According to the expenditure approach, gross domestic product is the sum of the final consumption (households, NPISH and general government consumption), gross capital formation (gross fixed capital formation, changes in inventories and net acquisition of valuables) and the external balance of goods and services (exports of the goods and services less imports of goods and services).

According to the income approach, gross domestic product is the sum of the consumption of fixed capital, compensation of employees, net taxes on products and operating surplus or mixed income.

The gross output is defined as the market value of all produced goods and services that are generated by resident producers during an accounting period. There are three categories of production: a) market production, b) production for own final use and c) other non-market production.

Intermediate consumption, according to purchaser's prices, is the value of products and services that are transformed, used and spent in the production process. Intermediate consumption includes: costs of raw material and equipment, energy costs and spare parts, costs of services, other business costs.

Value added, as the increase in the value of production is equal to the difference between gross output and intermediate consumption. Value added for institutional units is expressed according to basic prices that are prices that do not include taxes on products, but do include subsidies on products.

Gross domestic product according to market prices, is equal to the sum of total value added according to activities, including, on the level of the total economy, items that have not been allocated according to the activities. These are indirectly measured services of financial intermediation (FISIM) and taxes on products and services minus the subsidies on products and services. When the consumption of fixed capital is subtracted from the gross domestic product, the result is net domestic product.

Gross national income equals the sum of gross domestic product and balance of primary incomes (from labor and capital) with the rest of the world.

Gross national disposable income equals the sum of gross national income and the balance of current transfers with the rest of the world.

Taxes on products and services are taxes paid according to the produced or delivered goods and service. All taxes on products and import duties, value added tax (VAT), special taxes-excise, etc.

Other taxes on production consist of all taxes that enterprises incur as a result of engaging in production, independently of the quantity or value of goods and services produced or sold.

Subsidies on products and services are non-returnable payments of government institutions to market producers, provided for the production process of enterprises or for the sale or import of products. Subsidies on products are paid per unit of produced goods and services.

Other subsidies on production consist of subsidies except subsidies on products which resident producer units may receive as a consequence of engaging in production. Subsidies on production could not be calculated by unit of goods or services.

FISIM (financial intermediation services indirectly measured) presents the value of services of financial intermediation, which are indirectly measured. FISIM is calculated as the difference between the claims according to interest (active interest) and obligations according to interest (passive interest) for the institutional units for financial intermediation.

Consumption of fixed capital is the value of used fixed capital, during an accounting period, which is used, during the process of production of new products and services. In the national accounts system, every aggregate is expressed in gross and net form. Expressing it in “gross” form means that the consumption of fixed capital had not been subtracted, while “net” form means that the data is shown after the consumption of fixed capital had been subtracted.

Compensation of employees includes all remuneration to employees, both in cash or in kind, that the employees receive in return for their work done, as well as all payments to the compulsory social security schemes of employees.

Gross operating surplus is a residual category of gross value added by the activities that remain after reducing gross value added by compensation of employees and net other taxes on production (subsidies on production have been subtracted from other taxes).

Mixed income is an alternative term for the operating surplus of unincorporated enterprises owned by households, since it is impossible to separate their remuneration for work carried out from their profits as entrepreneur.

Imputed rent refers to value of services to owner-occupied dwellings. The estimates of imputed rent according to the user-cost approach are based on the Household Budget Survey (HBS) data from 2004.

TABLES AND GRAPHS

1.1 MAIN AGGREGATES OF NATIONAL ACCOUNTS FOR BiH

	2005 ¹⁾	2006 ¹⁾	2007 ¹⁾	2008 ¹⁾	2009 ¹⁾	2010
Gross domestic product, mio KM	17.218	19.333	21.836	24.759	24.051	24.584
Net primary income from the rest of the world, mio.KM	736	611	657	894	814	491
Gross national income, mio.KM	17.954	19.944	22.493	25.653	24.865	25.075
Net current transfers from the rest of the world, mio.KM	3.181	3.472	3.865	3.775	3.233	3.335
Gross national disposable income, mio.KM	21.135	23.416	26.358	29.428	28.098	28.410
Gross domestic product per capita, KM	4.480	5.031	5.683	6.444	6.258	6.397
Gross domestic product, mio. EUR	8.804	9.885	11.165	12.659	12.297	12.570
Gross domestic product per capita, EUR	2.291	2.572	2.906	3.295	3.200	3.271
Gross domestic product, mio. USD	10.947	12.398	15.275	18.522	17.096	16.646
Gross domestic product per capita, USD	2.849	3.226	3.976	4.821	4.449	4.331
Population, mid year estimate, 000 ²⁾	3.843	3.843	3.842	3.842	3.843	3.843
Annual average exchange rate KM / EUR ³⁾	1,9558	1,9558	1,9558	1,9558	1,9558	1,9558
Annual average exchange rate KM / USD ³⁾	1,5728	1,5594	1,4295	1,3367	1,4068	1,4769

1.2 GROSS DOMESTIC PRODUCT FOR BiH AND ENTITIES

	2005 ¹⁾	2006 ¹⁾	2007 ¹⁾	2008 ¹⁾	2009 ¹⁾	2010
GDP for BiH, mio KM	17.218	19.333	21.836	24.759	24.051	24.584
GDP for FBiH ⁴⁾ , mio KM	11.006	12.322	13.937	15.688	15.278	15.712
GDP for RS ⁵⁾ , mio KM	5.763	6.544	7.351	8.489	8.223	8.308
GDP for Brcko District, mio KM	449	467	548	581	550	564

1.3 SHARE OF ENTITIES IN GDP OF BiH -in %

	2005 ¹⁾	2006 ¹⁾	2007 ¹⁾	2008 ¹⁾	2009 ¹⁾	2010
GDP for BiH	100,00	100,00	100,00	100,00	100,00	100,00
GDP for FBiH	63,92	63,74	63,83	63,36	63,52	63,91
GDP for RS	33,47	33,85	33,66	34,29	34,19	33,79
GDP for Brcko District	2,61	2,42	2,51	2,35	2,29	2,29

1) Corrected data (see notes on methodology)

2) Source: Bulletin of Agency for Statistics of BiH

3) Source: Bulletin of Central bank of BiH

4) Source: Federal Office of Statistics

5) Source: Republika Srpska Institut of statistics

2.1 B&H - GROSS VALUE ADDED BY ACTIVITIES AND GROSS DOMESTIC PRODUCT, CURRENT PRICES

		000 KM					
	Activity	2005	2006	2007	2008	2009	2010
A	Agriculture, hunting and forestry	1.454.504	1.613.051	1.735.435	1.842.644	1.759.391	1.734.973
01	Agriculture, hunting and related service activities	1.265.406	1.396.523	1.517.689	1.592.688	1.561.149	1.529.069
02	Forestry, logging and related service activities	189.098	216.528	217.746	249.956	198.242	205.903
B	Fishing	3.206	4.662	7.289	8.036	10.546	6.720
05	Fishing, fish farming and related service activities	3.206	4.662	7.289	8.036	10.546	6.720
C	Mining and quarrying	335.456	356.941	432.479	512.295	500.558	493.750
10	Mining of coal and lignite; extract.of peat	217.477	245.843	296.010	351.530	369.187	359.626
11	Extraction of crude petroleum and natural gas, excluding surveying	-	-	-	-	-	-
13	Mining of metal ores	59.503	56.926	62.950	65.945	51.092	59.519
14	Other mining and quarrying	58.476	54.173	73.518	94.820	80.278	74.605
D	Manufacturing	1.753.055	1.989.250	2.451.520	2.827.418	2.588.548	2.748.779
15	Manufacture of food products and beverages	434.777	460.708	530.332	578.400	626.456	625.319
16	Manufacture of tobacco products	47.059	50.636	50.541	51.178	52.547	36.809
17	Manufacture of textiles	51.390	41.704	50.827	61.871	78.685	85.232
18	Manufacture of wearing apparel; dressing and dyeing of fur	73.691	77.027	94.031	99.710	91.061	95.658
19	Tanning and dressing of leather	50.409	81.240	83.556	100.214	90.379	106.704
20	Mfr. of wood and products of wood and cork, except furniture	144.930	162.711	200.212	216.445	174.208	180.928
21	Manufacture of pulp, paper and paper products	18.346	21.961	23.229	25.211	35.336	54.332
22	Publishing, printing and reproduction of recorded media	88.152	96.446	96.540	114.944	116.201	115.089
23	Manufacture of coke, refined petrol. products and nuclear fuel	-13.165	14.306	37.970	52.457	59.052	18.869
24	Manufacture of chemicals and chemical products	63.566	53.696	92.725	103.035	121.153	111.436
25	Manufacture of rubber and plastic products	57.586	65.337	85.707	101.917	115.879	102.570
26	Manufacture of other non-metallic mineral products	166.833	176.628	210.873	261.968	230.506	202.998
27	Manufacture of basic metals	109.867	153.055	239.869	256.982	79.216	222.717
28	Mfr. of fabricated metal products, except machinery and equipment	180.219	229.795	284.105	364.923	325.773	335.576
29	Manufacture of machinery and equipment n.e.c.	44.862	49.598	64.150	94.947	76.563	87.467
30	Manufacture of office machinery and computers	15.290	12.846	23.514	29.241	28.072	29.043

2.1 GROSS VALUE ADDED BY ACTIVITIES AND GROSS DOMESTIC PRODUCT, CURRENT PRICES
continued

		000 KM					
	Activity	2005	2006	2007	2008	2009	2010
31	Manufacture of electrical machinery and apparatus n.e.c.	38.377	44.285	53.759	58.829	45.963	62.584
32	Manufacture of radio, television and comm. equipment and appar.	6.133	7.176	6.504	10.111	14.319	15.049
33	Mfr. of medical, precision and optical instr., watches and clocks	13.948	16.201	17.622	20.324	19.077	18.830
34	Manufacture of motor vehicles, trailers and semi-trailers	37.912	36.946	48.547	50.139	53.789	68.228
35	Manufacture of other transport equipment	10.615	8.215	13.881	19.407	18.038	13.131
36	Manufacture of furniture, manufacturing n.e.c.	93.148	100.959	117.436	127.649	118.701	121.850
37	Recycling	19.110	27.774	25.589	27.517	17.574	38.358
E	Electricity, gas and water supply	849.473	826.193	761.748	1.022.046	1.061.498	1.098.299
40	Electricity, gas, steam and hot water supply	727.793	714.237	632.706	887.200	919.608	957.075
41	Collection, purification and distribution of water	121.680	111.957	129.042	134.847	141.890	141.224
F	Construction	752.308	829.412	1.058.668	1.340.151	1.269.079	1.076.319
45	Construction	752.308	829.412	1.058.668	1.340.151	1.269.079	1.076.319
G	Wholesale and retail trade; repair of motor vehicles, motorcycles	2.039.902	2.336.996	2.699.737	3.299.982	3.143.085	3.257.269
50	Sale, maintenance and repair of motor vehicles; retail sale of automotive fuel	263.871	302.662	353.103	418.975	389.690	410.490
51	Wholesale trade and commission trade, except of motor vehicles and motorcycles	941.419	1.119.577	1.307.163	1.699.452	1.612.420	1.612.979
52	Retail trade, except of motor vehicles and motorcycles; repairs of personal and household goods	834.613	914.757	1.039.470	1.181.556	1.140.975	1.233.800
H	Hotels and restaurants	397.476	427.040	468.597	496.686	484.537	520.797
55	Hotels and restaurants	397.476	427.040	468.597	496.686	484.537	520.797
I	Transport, storage and communication	1.278.519	1.352.634	1.492.607	1.661.487	1.648.936	1.694.003
60,61	Land transport; transport via pipelines, water transport	353.145	391.866	461.036	543.110	523.109	562.242
62	Air transport	4.238	2.161	5.019	5.949	-4.160	-11.715
63	Supporting and auxiliary transport activities; activities of travel agenc.	84.983	98.069	107.540	125.239	118.946	122.012
64	Post and telecommunications	836.153	860.537	919.013	987.190	1.011.041	1.021.464

2.1 GROSS VALUE ADDED BY ACTIVITIES AND GROSS DOMESTIC PRODUCT, CURRENT PRICES
continued

000 KM

	Activity	2005	2006	2007	2008	2009	2010
J	Financial intermediation	631.943	694.765	854.345	893.645	915.915	935.156
65	Financial intermediation, except insurance and pension funding	512.646	567.240	715.726	778.483	797.511	799.665
66	Insurance and pension funding, except compulsory social security	106.880	112.618	107.529	96.138	96.284	107.328
67	Activities auxiliary to financial intermediation	12.416	14.907	31.090	19.024	22.120	28.162
K	Real estate, renting and business activities	1.806.895	1.876.598	1.943.215	2.059.518	2.158.664	2.228.307
70	Real estate activities	1.157.840	1.151.966	1.152.852	1.185.789	1.258.650	1.274.685
	Of which: imputed rent	1.121.939	1.114.312	1.112.128	1.128.851	1.164.414	1.164.876
71	Renting of machinery and equipment without operator	11.915	14.436	18.798	22.939	17.426	19.812
72	Computer and related activities	42.039	50.248	67.171	86.685	89.833	102.964
73	Research and development	22.288	48.745	41.860	45.036	61.354	70.706
74	Other business activities	572.812	611.202	662.534	719.068	731.402	760.139
L	Public administration and defence; compulsory social security	1.489.260	1.654.973	1.866.652	2.191.304	2.349.212	2.274.239
75	Public administration and defence; compulsory social security	1.489.260	1.654.973	1.866.652	2.191.304	2.349.212	2.274.239
M	Education	682.645	782.763	900.944	1.114.566	1.160.528	1.181.404
80	Education	682.645	782.763	900.944	1.114.566	1.160.528	1.181.404
N	Health and social work	669.947	730.445	832.401	1.091.845	1.095.379	1.140.042
85	Health and social work	669.947	730.445	832.401	1.091.845	1.095.379	1.140.042
O	Other community, social and personal service activities	314.755	349.337	422.394	473.797	493.824	520.076
90	Sewage and refuse disposal, sanitation and similar activities	57.769	61.377	77.400	86.690	93.064	93.747
91	Activities of membership organizations n.e.c.	36.740	39.391	45.700	55.316	46.192	54.739
92	Recreational, cultural and spor.act.	164.398	177.678	223.673	248.229	275.659	289.893
93	Other service activities	55.848	70.890	75.622	83.561	78.909	81.698
	Total of activities	14.459.344	15.825.062	17.928.031	20.835.420	20.639.701	20.910.132
	FISIM (-)	-408.025	-468.589	-626.870	-682.945	-675.832	-674.924
	Gross value added, basic prices	14.051.319	15.356.473	17.301.161	20.152.475	19.963.868	20.235.208
	Taxes on products and services and import less subsidies (+)	3.167.103	3.976.532	4.534.718	4.606.518	4.087.010	4.348.697
	Gross domestic product (GDP) at market prices	17.218.422	19.333.005	21.835.878	24.758.993	24.050.878	24.583.905

2.2 GROSS VALUE ADDED BY ACTIVITIES AND GROSS DOMESTIC PRODUCT, CURRENT PRICES

						%	
Activity		2005	2006	2007	2008	2009	2010
A	Agriculture, hunting and forestry	8,45	8,34	7,95	7,44	7,32	7,06
01	Agriculture, hunting and related service activities	7,35	7,22	6,95	6,43	6,49	6,22
02	Forestry, logging and related service activities	1,10	1,12	1,00	1,01	0,82	0,84
B	Fishing	0,02	0,02	0,03	0,03	0,04	0,03
05	Fishing, fish farming and related service activities	0,02	0,02	0,03	0,03	0,04	0,03
C	Mining and quarrying	1,95	1,85	1,98	2,07	2,08	2,01
10	Mining of coal and lignite; extract.of peat	1,26	1,27	1,36	1,42	1,54	1,46
11	Extraction of crude petroleum and natural gas, excluding surveying	-	-	-	-	-	-
13	Mining of metal ores	0,35	0,29	0,29	0,27	0,21	0,24
14	Other mining and quarrying	0,34	0,28	0,34	0,38	0,33	0,30
D	Manufacturing	10,18	10,29	11,23	11,42	10,76	11,18
15	Manufacture of food products and beverages	2,53	2,38	2,43	2,34	2,60	2,54
16	Manufacture of tobacco products	0,27	0,26	0,23	0,21	0,22	0,15
17	Manufacture of textiles	0,30	0,22	0,23	0,25	0,33	0,35
18	Manufacture of wearing apparel; dressing and dyeing of fur	0,43	0,40	0,43	0,40	0,38	0,39
19	Tanning and dressing of leather	0,29	0,42	0,38	0,40	0,38	0,43
20	Mfr. of wood and products of wood and cork, except furniture	0,84	0,84	0,92	0,87	0,72	0,74
21	Manufacture of pulp, paper and paper products	0,11	0,11	0,11	0,10	0,15	0,22
22	Publishing, printing and reproduction of recorded media	0,51	0,50	0,44	0,46	0,48	0,47
23	Manufacture of coke, refined petrol. products and nuclear fuel	-0,08	0,07	0,17	0,21	0,25	0,08
24	Manufacture of chemicals and chemical products	0,37	0,28	0,42	0,42	0,50	0,45
25	Manufacture of rubber and plastic products	0,33	0,34	0,39	0,41	0,48	0,42
26	Manufacture of other non-metallic mineral products	0,97	0,91	0,97	1,06	0,96	0,83
27	Manufacture of basic metals	0,64	0,79	1,10	1,04	0,33	0,91
28	Mfr. of fabricated metal products, except machinery and equipment	1,05	1,19	1,30	1,47	1,35	1,37
29	Manufacture of machinery and equipment n.e.c.	0,26	0,26	0,29	0,38	0,32	0,36
30	Manufacture of office machinery and computers	0,09	0,07	0,11	0,12	0,12	0,12

2.2 GROSS VALUE ADDED BY ACTIVITIES AND GROSS DOMESTIC PRODUCT, CURRENT PRICES
continued

						%	
Activity	2005	2006	2007	2008	2009	2010	
31	Manufacture of electrical machinery and apparatus n.e.c.	0,22	0,23	0,25	0,24	0,19	0,25
32	Manufacture of radio, television and comm. equipment and appar.	0,04	0,04	0,03	0,04	0,06	0,06
33	Mfr. of medical, precision and optical instr., watches and clocks	0,08	0,08	0,08	0,08	0,08	0,08
34	Manufacture of motor vehicles, trailers and semi-trailers	0,22	0,19	0,22	0,20	0,22	0,28
35	Manufacture of other transport equipment	0,06	0,04	0,06	0,08	0,07	0,05
36	Manufacture of furniture, manufacturing n.e.c.	0,54	0,52	0,54	0,52	0,49	0,50
37	Recycling	0,11	0,14	0,12	0,11	0,07	0,16
E	Electricity, gas and water supply	4,93	4,27	3,49	4,13	4,41	4,47
40	Electricity, gas, steam and hot water supply	4,23	3,69	2,90	3,58	3,82	3,89
41	Collection, purification and distribution of water	0,71	0,58	0,59	0,54	0,59	0,57
F	Construction	4,37	4,29	4,85	5,41	5,28	4,38
45	Construction	4,37	4,29	4,85	5,41	5,28	4,38
G	Wholesale and retail trade; repair of motor vehicles, motorcycles	11,85	12,09	12,36	13,33	13,07	13,25
50	Sale, maintenance and repair of motor vehicles; retail sale of automotive fuel	1,53	1,57	1,62	1,69	1,62	1,67
51	Wholesale trade and commission trade, except of motor vehicles and motorcycles	5,47	5,79	5,99	6,86	6,70	6,56
52	Retail trade, except of motor vehicles and motorcycles; repairs of personal and household goods	4,85	4,73	4,76	4,77	4,74	5,02
H	Hotels and restaurants	2,31	2,21	2,15	2,01	2,01	2,12
55	Hotels and restaurants	2,31	2,21	2,15	2,01	2,01	2,12
I	Transport, storage and communication	7,43	7,00	6,84	6,71	6,86	6,89
60,61	Land transport; transport via pipelines, water transport	2,05	2,03	2,11	2,19	2,18	2,29
62	Air transport	0,02	0,01	0,02	0,02	-0,02	-0,05
63	Supporting and auxiliary transport activities; activities of travel agenc.	0,49	0,51	0,49	0,51	0,49	0,50
64	Post and telecommunications	4,86	4,45	4,21	3,99	4,20	4,16

2.2 GROSS VALUE ADDED BY ACTIVITIES AND GROSS DOMESTIC PRODUCT, CURRENT PRICES
continued

							%
Activity		2005	2006	2007	2008	2009	2010
J	Financial intermediation	3,67	3,59	3,91	3,61	3,81	3,80
65	Financial intermediation, except insurance and pension funding	2,98	2,93	3,28	3,14	3,32	3,25
66	Insurance and pension funding, except compulsory social security	0,62	0,58	0,49	0,39	0,40	0,44
67	Activities auxiliary to financial intermediation	0,07	0,08	0,14	0,08	0,09	0,11
K	Real estate, renting and business activities	10,49	9,71	8,90	8,32	8,98	9,06
70	Real estate activities	6,72	5,96	5,28	4,79	5,23	5,19
	Of which: imputed rent	6,52	5,76	5,09	4,56	4,84	4,74
71	Renting of machinery and equipment without operator	0,07	0,07	0,09	0,09	0,07	0,08
72	Computer and related activities	0,24	0,26	0,31	0,35	0,37	0,42
73	Research and development	0,13	0,25	0,19	0,18	0,26	0,29
74	Other business activities	3,33	3,16	3,03	2,90	3,04	3,09
L	Public administration and defence; compulsory social security	8,65	8,56	8,55	8,85	9,77	9,25
75	Public administration and defence; compulsory social security	8,65	8,56	8,55	8,85	9,77	9,25
M	Education	3,96	4,05	4,13	4,50	4,83	4,81
80	Education	3,96	4,05	4,13	4,50	4,83	4,81
N	Health and social work	3,89	3,78	3,81	4,41	4,55	4,64
85	Health and social work	3,89	3,78	3,81	4,41	4,55	4,64
O	Other community, social and personal service activities	1,83	1,81	1,93	1,91	2,05	2,12
90	Sewage and refuse disposal, sanitation and similar activities	0,34	0,32	0,35	0,35	0,39	0,38
91	Activities of membership organizations n.e.c.	0,21	0,20	0,21	0,22	0,19	0,22
92	Recreational, cultural and spor.act.	0,95	0,92	1,02	1,00	1,15	1,18
93	Other service activities	0,32	0,37	0,35	0,34	0,33	0,33
	Total of activities	83,98	81,86	82,10	84,15	85,82	85,06
	FISIM (-)	-2,37	-2,42	-2,87	-2,76	-2,81	-2,75
	Gross value added, basic prices	81,61	79,43	79,23	81,39	83,01	82,31
	Taxes on products and services and import less subsidies (+)	18,39	20,57	20,77	18,61	16,99	17,69
	Gross domestic product (GDP) at market prices	100,00	100,00	100,00	100,00	100,00	100,00

**2.3 B&H - GROSS VALUE ADDED BY ACTIVITIES AND GROSS DOMESTIC PRODUCT, CURRENT PRICES
NOMINAL INDICES**

		Previous year=100				
Activity	2006	2007	2008	2009	2010	
A	Agriculture, hunting and forestry	110,90	107,59	106,18	95,48	98,61
01	Agriculture, hunting and related service activities	110,36	108,68	104,94	98,02	97,95
02	Forestry, logging and related service activities	114,51	100,56	114,79	79,31	103,86
B	Fishing	145,41	156,34	110,25	131,23	63,72
05	Fishing, fish farming and related service activities	145,41	156,34	110,25	131,23	63,72
C	Mining and quarrying	106,40	121,16	118,46	97,71	98,64
10	Mining of coal and lignite; extract.of peat	113,04	120,41	118,76	105,02	97,41
11	Extraction of crude petroleum and natural gas, excluding surveying	-	-	-	-	-
13	Mining of metal ores	95,67	110,58	104,76	77,48	116,49
14	Other mining and quarrying	92,64	135,71	128,97	84,66	92,93
D	Manufacturing	113,47	123,24	115,33	91,55	106,19
15	Manufacture of food products and beverages	105,96	115,11	109,06	108,31	99,82
16	Manufacture of tobacco products	107,60	99,81	101,26	102,68	70,05
17	Manufacture of textiles	81,15	121,88	121,73	127,18	108,32
18	Manufacture of wearing apparel; dressing and dyeing of fur	104,53	122,08	106,04	91,33	105,05
19	Tanning and dressing of leather	161,16	102,85	119,94	90,19	118,06
20	Mfr. of wood and products of wood and cork, except furniture	112,27	123,05	108,11	80,49	103,86
21	Manufacture of pulp, paper and paper products	119,71	105,77	108,53	140,16	153,76
22	Publishing, printing and reproduction of recorded media	109,41	100,10	119,06	101,09	99,04
23	Manufacture of coke, refined petrol. products and nuclear fuel	-108,66	265,41	138,15	112,57	31,95
24	Manufacture of chemicals and chemical products	84,47	172,68	111,12	117,58	91,98
25	Manufacture of rubber and plastic products	113,46	131,18	118,91	113,70	88,51
26	Manufacture of other non-metallic mineral products	105,87	119,39	124,23	87,99	88,07
27	Manufacture of basic metals	139,31	156,72	107,13	30,83	281,15
28	Mfr. of fabricated metal products, except machinery and equipment	127,51	123,63	128,45	89,27	103,01
29	Manufacture of machinery and equipment n.e.c.	110,56	129,34	148,01	80,64	114,24
30	Manufacture of office machinery and computers	84,01	183,05	124,35	96,00	103,46

2.3 B&H - GROSS VALUE ADDED BY ACTIVITIES AND GROSS DOMESTIC PRODUCT, CURRENT PRICES - continued
NOMINAL INDICES

		Previous year=100				
Activity	2006	2007	2008	2009	2010	
31	Manufacture of electrical machinery and apparatus n.e.c.	115,40	121,39	109,43	78,13	136,16
32	Manufacture of radio, television and comm. equipment and appar.	117,02	90,64	155,45	141,63	105,10
33	Mfr. of medical, precision and optical instr., watches and clocks	116,15	108,78	115,33	93,87	98,70
34	Manufacture of motor vehicles, trailers and semi-trailers	97,45	131,40	103,28	107,28	126,84
35	Manufacture of other transport equipment	77,39	168,96	139,82	92,94	72,80
36	Manufacture of furniture, manufacturing n.e.c.	108,39	116,32	108,70	92,99	102,65
37	Recycling	145,34	92,13	107,53	63,87	218,26
E	Electricity, gas and water supply	97,26	92,20	134,17	103,86	103,47
40	Electricity, gas, steam and hot water supply	98,14	88,58	140,22	103,65	104,07
41	Collection, purification and distribution of water	92,01	115,26	104,50	105,22	99,53
F	Construction	110,25	127,64	126,59	94,70	84,81
45	Construction	110,25	127,64	126,59	94,70	84,81
G	Wholesale and retail trade; repair of motor vehicles, motorcycles	114,56	115,52	122,23	95,25	103,63
50	Sale, maintenance and repair of motor vehicles; retail sale of automotive fuel	114,70	116,67	118,65	93,01	105,34
51	Wholesale trade and commission trade, except of motor vehicles and motorcycles	118,92	116,76	130,01	94,88	100,03
52	Retail trade, except of motor vehicles and motorcycles; repairs of personal and household goods	109,60	113,63	113,67	96,57	108,14
H	Hotels and restaurants	107,44	109,73	105,99	97,55	107,48
55	Hotels and restaurants	107,44	109,73	105,99	97,55	107,48
I	Transport, storage and communication	105,80	110,35	111,31	99,24	102,73
60,61	Land transport; transport via pipelines, water transport	110,96	117,65	117,80	96,32	107,48
62	Air transport	50,98	232,29	118,52	--	--
63	Supporting and auxiliary transport activities; activities of travel agenc.	115,40	109,66	116,46	94,97	102,58
64	Post and telecommunications	102,92	106,80	107,42	102,42	101,03

2.3 B&H - GROSS VALUE ADDED BY ACTIVITIES AND GROSS DOMESTIC PRODUCT, CURRENT PRICES - continued
NOMINAL INDICES

		Previous year=100				
Activity	2006	2007	2008	2009	2010	
J	Financial intermediation	109,94	122,97	104,60	102,49	102,10
65	Financial intermediation, except insurance and pension funding	110,65	126,18	108,77	102,44	100,27
66	Insurance and pension funding, except compulsory social security	105,37	95,48	89,41	100,15	111,47
67	Activities auxiliary to financial intermediation	120,06	208,56	61,19	116,28	127,32
K	Real estate, renting and business activities	103,86	103,55	105,99	104,81	103,23
70	Real estate activities	99,49	100,08	102,86	106,14	101,27
	Of which: imputed rent	99,32	99,80	101,50	103,15	100,04
71	Renting of machinery and equipment without operator	121,16	130,21	122,03	75,97	113,69
72	Computer and related activities	119,53	133,68	129,05	103,63	114,62
73	Research and development	218,70	85,87	107,59	136,23	115,24
74	Other business activities	106,70	108,40	108,53	101,72	103,93
L	Public administration and defence; compulsory social security	111,13	112,79	117,39	107,21	96,81
75	Public administration and defence; compulsory social security	111,13	112,79	117,39	107,21	96,81
M	Education	114,67	115,10	123,71	104,12	101,80
80	Education	114,67	115,10	123,71	104,12	101,80
N	Health and social work	109,03	113,96	131,17	100,32	104,08
85	Health and social work	109,03	113,96	131,17	100,32	104,08
O	Other community, social and personal service activities	110,99	120,91	112,17	104,23	105,32
90	Sewage and refuse disposal, sanitation and similar activities	106,25	126,10	112,00	107,35	100,73
91	Activities of membership organizations n.e.c.	107,22	116,01	121,04	83,51	118,50
92	Recreational, cultural and spor.act.	108,08	125,89	110,98	111,05	105,16
93	Other service activities	126,93	106,67	110,50	94,43	103,53
	Total of activities	109,45	113,29	116,22	99,06	101,31
	FISIM (-)	114,84	133,78	108,95	98,96	99,87
	Gross value added, basic prices	109,29	112,66	116,48	99,06	101,36
	Taxes on products and services and import less subsidies (+)	125,56	114,04	101,58	88,72	106,40
	Gross domestic product (GDP) at market prices	112,28	112,95	113,39	97,14	102,22

3.1 B&H - GROSS VALUE ADDED BY ACTIVITIES AND GROSS DOMESTIC PRODUCT, CONSTANT PRICES

Section of activity		2006	2007	2008	2009	2010
A	Agriculture, hunting and forestry	1.540.064	1.643.490	1.809.547	1.809.333	1.694.933
B	Fishing	4.600	5.923	8.992	9.327	8.241
C	Mining and quarrying	366.278	373.633	484.641	471.033	505.409
D	Manufacturing	1.985.681	2.221.137	2.605.964	2.650.480	2.757.047
E	Electricity, gas and water supply	894.083	829.983	835.668	1.030.635	1.096.865
F	Construction	768.369	949.457	1.237.091	1.243.209	1.111.959
G	Wholesale and retail trade; repair of motor vehicles, motorcycles	2.155.224	2.593.829	2.894.435	3.101.534	3.148.714
H	Hotels and restaurants	447.784	444.452	458.418	457.821	510.308
I	Transport, storage and communication	1.357.690	1.423.622	1.602.290	1.592.946	1.651.939
J	Financial intermediation	717.843	807.319	881.442	950.350	920.739
K	Real estate, renting and business activities	1.908.740	1.956.109	1.978.803	2.042.680	2.209.772
	Of which: imputed rent	1.122.013	1.114.223	1.112.208	1.129.026	1.162.258
L	Public administration and defence; compulsory social security	1.503.511	1.666.293	1.934.610	2.229.828	2.371.759
M	Education	704.998	799.748	935.954	1.134.202	1.185.755
N	Health and social work	683.453	749.676	851.588	1.123.461	1.123.952
O	Other community, social and personal service activities	351.110	377.266	443.752	475.796	498.165
	Total of activities	15.389.427	16.841.938	18.963.195	20.322.636	20.795.557
	FISIM (-)	-503.516	-558.588	-693.922	-760.570	-683.236
	Gross value added, basic prices	14.885.911	16.283.350	18.269.273	19.562.066	20.112.321
	Taxes on products and services and import less subsidies (+)	3.357.741	4.231.895	4.785.484	4.476.221	4.112.101
	Gross domestic product (GDP) at market prices	18.243.651	20.515.245	23.054.757	24.038.287	24.224.423

**3.2 B&H - GROSS VALUE ADDED BY ACTIVITIES AND GROSS DOMESTIC PRODUCT, CONSTANT PRICES
REAL INDICES**

		Previous year=100				
Section of activity	2006	2007	2008	2009	2010	
A Agriculture, hunting and forestry	105,88	101,89	104,27	98,19	96,34	
B Fishing	143,48	127,05	123,37	116,07	78,15	
C Mining and quarrying	109,19	104,68	112,06	91,95	100,97	
D Manufacturing	113,27	111,66	106,30	93,74	106,51	
E Electricity, gas and water supply	105,25	100,46	109,70	100,84	103,33	
F Construction	102,13	114,47	116,85	92,77	87,62	
G Wholesale and retail trade; repair of motor vehicles, motorcycles	105,65	110,99	107,21	93,99	100,18	
H Hotels and restaurants	112,66	104,08	97,83	92,18	105,32	
I Transport, storage and communication	106,19	105,25	107,35	95,87	100,18	
J Financial intermediation	113,59	116,20	103,17	106,35	100,53	
K Real estate, renting and business activities	105,64	104,24	101,83	99,18	102,37	
Of which: imputed rent	100,01	99,99	100,01	100,02	99,81	
L Public administration and defence; compulsory social security	100,96	100,68	103,64	101,76	100,96	
M Education	103,27	102,17	103,89	101,76	102,17	
N Health and social work	102,02	102,63	102,31	102,90	102,61	
O Other community, social and personal service activities	111,55	107,99	105,06	100,42	100,88	
Total of activities	106,43	106,43	105,77	97,54	100,76	
FISIM (-)	123,40	119,21	110,70	111,37	101,10	
Gross value added, basic prices	105,94	106,04	105,60	97,07	100,74	
Taxes on products and services and import less subsidies (+)	106,02	106,42	105,53	97,17	100,61	
Gross domestic product (GDP) at market prices	105,95	106,12	105,58	97,09	100,72	

4.1 B&H - PRODUCTION ACCOUNT BY ACTIVITIES IN 2009, CURRENT PRICES

				000 KM
	Activity	Output	Intermediate consumption	Gross value added
A	Agriculture, hunting and forestry	3.796.081	2.036.689	1.759.391
01	Agriculture, hunting and related service activities	3.431.972	1.870.823	1.561.149
02	Forestry, logging and related service activities	364.108	165.866	198.242
B	Fishing	31.143	20.597	10.546
05	Fishing, fish farming and related service activities	31.143	20.597	10.546
C	Mining and quarrying	851.997	351.439	500.558
10	Mining of coal and lignite; extract of peat	558.281	189.093	369.187
11	Extraction of crude petroleum and natural gas, excluding surveying	-	-	-
13	Mining of metal ores	115.870	64.778	51.092
14	Other mining and quarrying	177.846	97.568	80.278
D	Manufacturing	9.161.690	6.573.142	2.588.548
15	Manufacture of food products and beverages	2.193.884	1.567.428	626.456
16	Manufacture of tobacco products	124.776	72.229	52.547
17	Manufacture of textiles	150.092	71.407	78.685
18	Manufacture of wearing apparel; dressing and dyeing of fur	172.199	81.138	91.061
19	Tanning and dressing of leather	188.830	98.451	90.379
20	Mfr. of wood and products of wood and cork, except furniture	597.500	423.292	174.208
21	Manufacture of pulp, paper and paper products	173.248	137.912	35.336
22	Publishing, printing and reproduction of recorded media	251.453	135.252	116.201
23	Manufacture of coke, refined petrol. products and nuclear fuel	863.081	804.029	59.052
24	Manufacture of chemicals and chemical products	340.222	219.069	121.153
25	Manufacture of rubber and plastic products	330.959	215.080	115.879
26	Manufacture of other non-metallic mineral products	562.165	331.659	230.506
27	Manufacture of basic metals	1.020.222	941.006	79.216
28	Mfr. of fabricated metal products, except machinery and equipment	902.611	576.838	325.773
29	Manufacture of machinery and equipment n.e.c.	228.445	151.883	76.563
30	Manufacture of office machinery and computers	73.587	45.515	28.072
31	Manufacture of electrical machinery and apparatus n.e.c.	205.199	159.236	45.963

4.1 B&H - PRODUCTION ACCOUNT BY ACTIVITIES IN 2009, CURRENT PRICES
continued

				000 KM
	Activity	Output	Intermediate consumption	Gross value added
32	Manufacture of radio, television and comm. equipment and appar.	42.770	28.450	14.319
33	Mfr. of medical, precision and optical instr., watches and clocks	42.478	23.400	19.077
34	Manufacture of motor vehicles, trailers and semi-trailers	227.015	173.226	53.789
35	Manufacture of other transport equipment	28.805	10.767	18.038
36	Manufacture of furniture, manufacturing n.e.c.	367.902	249.202	118.701
37	Recycling	74.247	56.673	17.574
E	Electricity, gas and water supply	2.279.190	1.217.693	1.061.498
40	Electricity, gas, steam and hot water supply	2.060.142	1.140.535	919.608
41	Collection, purification and distribution of water	219.048	77.158	141.890
F	Construction	3.575.186	2.306.107	1.269.079
45	Construction	3.575.186	2.306.107	1.269.079
G	Wholesale and retail trade; repair of motor vehicles, motorcycles	5.355.372	2.212.287	3.143.085
50	Sale, maintenance and repair of motor vehicles; retail sale of automotive fuel	627.732	238.042	389.690
51	Wholesale trade and commission trade, except of motor vehicles and motorcycles	2.932.247	1.319.827	1.612.420
52	Retail trade, except of motor vehicles and motorcycles; repairs of personal and household goods	1.795.393	654.418	1.140.975
H	Hotels and restaurants	938.594	454.057	484.537
55	Hotels and restaurants	938.594	454.057	484.537
I	Transport, storage and communication	2.929.064	1.280.128	1.648.936
60,61	Land transport; transport via pipelines, water transport	1.179.539	656.430	523.109
62	Air transport	27.317	31.477	-4.160
63	Supporting and auxiliary transport activities; activities of travel agenc.	253.388	134.442	118.946
64	Post and telecommunications	1.468.820	457.779	1.011.041
J	Financial intermediation	1.405.617	489.702	915.915
65	Financial intemediation, except insurance and pension funding	1.164.057	366.546	797.511

4.1 B&H - PRODUCTION ACCOUNT BY ACTIVITIES IN 2009, CURRENT PRICES
continued

000 KM

Activity	Output	Intermediate consumption	Gross value added
66 Insurance and pension funding, except compulsory social security	204.454	108.170	96.284
67 Activities auxiliary to financial intermediation	37.106	14.986	22.120
K Real estate, renting and business activities	3.362.551	1.203.887	2.158.664
70 Real estate activities	1.575.152	316.503	1.258.650
Of which: imputed rent	1.369.745	205.331	1.164.414
71 Renting of machinery and equipment without operator	32.181	14.755	17.426
72 Computer and related activities	151.731	61.898	89.833
73 Research and development	269.440	208.086	61.354
74 Other business activities	1.334.047	602.645	731.402
L Public administration and defence; compulsory social security	3.101.191	751.979	2.349.212
75 Public administration and defence; compulsory social security	3.101.191	751.979	2.349.212
M Education	1.370.996	210.468	1.160.528
80 Education	1.370.996	210.468	1.160.528
N Health and social work	1.556.053	460.674	1.095.379
85 Health and social work	1.556.053	460.674	1.095.379
O Other community, social and personal service activities	897.713	403.889	493.824
90 Sewage and refuse disposal, sanitation and similar activities	133.235	40.171	93.064
91 Activities of membership organizations n.e.c.	101.618	55.426	46.192
92 Recreational, cultural and spor.act.	505.575	229.915	275.659
93 Other service activities	157.286	78.377	78.909
Total of activities	40.612.439	19.972.738	20.639.701
FISIM (-)		675.832	-675.832
Gross value added, basic prices	40.612.439	20.648.570	19.963.868
Taxes on products and services and import less subsidies (+)			4.087.010
Gross domestic product (GDP) at market prices			24.050.878

4.2 B&H - PRODUCTION ACCOUNT BY ACTIVITIES IN 2010, CURRENT PRICES

				000 KM
	Activity	Output	Intermediate consumption	Gross value added
A	Agriculture, hunting and forestry	3.926.040	2.191.067	1.734.973
01	Agriculture, hunting and related service activities	3.550.753	2.021.683	1.529.069
02	Forestry, logging and related service activities	375.287	169.384	205.903
B	Fishing	23.281	16.560	6.720
05	Fishing, fish farming and related service activities	23.281	16.560	6.720
C	Mining and quarrying	865.232	371.483	493.750
10	Mining of coal and lignite; extract of peat	553.983	194.357	359.626
11	Extraction of crude petroleum and natural gas, excluding surveying	-	-	-
13	Mining of metal ores	141.784	82.265	59.519
14	Other mining and quarrying	169.466	94.861	74.605
D	Manufacturing	10.859.435	8.110.656	2.748.779
15	Manufacture of food products and beverages	2.340.481	1.715.162	625.319
16	Manufacture of tobacco products	100.252	63.443	36.809
17	Manufacture of textiles	154.678	69.447	85.232
18	Manufacture of wearing apparel; dressing and dyeing of fur	177.426	81.768	95.658
19	Tanning and dressing of leather	249.531	142.827	106.704
20	Mfr. of wood and products of wood and cork, except furniture	631.610	450.682	180.928
21	Manufacture of pulp, paper and paper products	219.165	164.833	54.332
22	Publishing, printing and reproduction of recorded media	254.127	139.038	115.089
23	Manufacture of coke, refined petrol. products and nuclear fuel	1.361.445	1.342.575	18.869
24	Manufacture of chemicals and chemical products	357.754	246.318	111.436
25	Manufacture of rubber and plastic products	336.613	234.043	102.570
26	Manufacture of other non-metallic mineral products	516.402	313.403	202.998
27	Manufacture of basic metals	1.601.850	1.379.132	222.717
28	Mfr. of fabricated metal products, except machinery and equipment	985.704	650.128	335.576
29	Manufacture of machinery and equipment n.e.c.	246.470	159.003	87.467
30	Manufacture of office machinery and computers	71.303	42.260	29.043
31	Manufacture of electrical machinery and apparatus n.e.c.	245.844	183.260	62.584

4.2 B&H - PRODUCTION ACCOUNT BY ACTIVITIES IN 2010, CURRENT PRICES
continued

				000 KM
	Activity	Output	Intermediate consumption	Gross value added
32	Manufacture of radio, television and comm. equipment and appar.	46.422	31.373	15.049
33	Mfr. of medical, precision and optical instr., watches and clocks	48.974	30.144	18.830
34	Manufacture of motor vehicles, trailers and semi-trailers	288.533	220.305	68.228
35	Manufacture of other transport equipment	22.751	9.619	13.131
36	Manufacture of furniture, manufacturing n.e.c.	376.376	254.526	121.850
37	Recycling	225.725	187.367	38.358
E	Electricity, gas and water supply	2.345.311	1.247.012	1.098.299
40	Electricity, gas, steam and hot water supply	2.130.765	1.173.690	957.075
41	Collection, purification and distribution of water	214.546	73.322	141.224
F	Construction	3.102.284	2.025.965	1.076.319
45	Construction	3.102.284	2.025.965	1.076.319
G	Wholesale and retail trade; repair of motor vehicles, motorcycles	5.479.388	2.222.119	3.257.269
50	Sale, maintenance and repair of motor vehicles; retail sale of automotive fuel	650.482	239.992	410.490
51	Wholesale trade and commission trade, except of motor vehicles and motorcycles	2.950.462	1.337.483	1.612.979
52	Retail trade, except of motor vehicles and motorcycles; repairs of personal and household goods	1.878.444	644.644	1.233.800
H	Hotels and restaurants	1.005.081	484.284	520.797
55	Hotels and restaurants	1.005.081	484.284	520.797
I	Transport, storage and communication	3.082.330	1.388.327	1.694.003
60,61	Land transport; transport via pipelines, water transport	1.293.508	731.265	562.242
62	Air transport	39.555	51.271	-11.715
63	Supporting and auxiliary transport activities; activities of travel agenc.	261.687	139.675	122.012
64	Post and telecommunications	1.487.580	466.116	1.021.464
J	Financial intermediation	1.423.909	488.753	935.156
65	Financial intemediation, except insurance and pension funding	1.162.415	362.750	799.665

4.2 B&H - PRODUCTION ACCOUNT BY ACTIVITIES IN 2010, CURRENT PRICES
continued

			000 KM	
Activity	Output	Intermediate consumption	Gross value added	
66	Insurance and pension funding, except compulsory social security	221.447	114.119	107.328
67	Activities auxiliary to financial intermediation	40.047	11.884	28.162
K	Real estate, renting and business activities	3.560.113	1.331.806	2.228.307
70	Real estate activities	1.596.829	322.144	1.274.685
	Of which: imputed rent	1.370.283	205.407	1.164.876
71	Renting of machinery and equipment without operator	33.192	13.380	19.812
72	Computer and related activities	175.978	73.014	102.964
73	Research and development	347.021	276.315	70.706
74	Other business activities	1.407.093	646.954	760.139
L	Public administration and defence; compulsory social security	3.081.183	806.944	2.274.239
75	Public administration and defence; compulsory social security	3.081.183	806.944	2.274.239
M	Education	1.383.199	201.795	1.181.404
80	Education	1.383.199	201.795	1.181.404
N	Health and social work	1.635.469	495.427	1.140.042
85	Health and social work	1.635.469	495.427	1.140.042
O	Other community, social and personal service activities	1.016.928	496.852	520.076
90	Sewage and refuse disposal, sanitation and similar activities	138.055	44.308	93.747
91	Activities of membership organizations n.e.c.	116.007	61.268	54.739
92	Recreational, cultural and spor.act.	613.005	323.112	289.893
93	Other service activities	149.861	68.163	81.698
	Total of activities	42.789.183	21.879.050	20.910.132
	FISIM (-)		674.924	-674.924
	Gross value added, basic prices	42.789.183	22.553.974	20.235.208
	Taxes on products and services and import less subsidies (+)			4.348.697
	Gross domestic product (GDP) at market prices			24.583.905

5.1 B&H - GENERATION OF INCOME ACCOUNT IN 2005, CURRENT PRICES

000 KM

Section of activity	Gross value added	Compensation of employees	Net other taxes on production	Gross operating surplus / mixed income	Consumption of fixed capital	Net operating surplus / mixed income
A Agriculture, hunting and forestry	1.454.504	191.077	-19.116	1.282.544	156.094	1.126.450
B Fishing	3.206	4.092	-289	-596	1.572	-2.168
C Mining and quarrying	335.456	260.814	10.052	64.591	88.157	-23.566
D Manufacturing	1.753.055	1.241.718	42.853	468.484	482.027	-13.543
E Electricity, gas and water supply	849.473	413.541	28.690	407.242	503.912	-96.670
F Construction	752.308	435.415	20.761	296.132	104.642	191.490
G Wholesale and retail trade; repair of motor vehicles, motorcycles	2.039.902	1.001.485	53.982	984.435	288.469	695.965
H Hotels and restaurants	397.476	195.858	9.817	191.801	45.557	146.243
I Transport, storage and communication	1.278.519	603.240	14.282	660.997	380.967	280.029
J Financial intermediation	631.943	319.649	16.405	295.889	63.858	232.031
K Real estate, renting and business activities	1.806.895	401.700	20.689	1.384.506	572.975	811.531
Of which: imputed rent	1.121.939	-	-	1.121.939	487.483	634.456
L Public administration and defence; compulsory social security	1.489.260	1.331.101	26.206	131.953	131.953	-
M Education	682.645	624.448	12.910	45.287	35.821	9.467
N Health and social work	669.947	564.014	12.579	93.354	73.974	19.379
O Other community, social and personal service activities	314.755	224.568	8.722	81.465	40.475	40.990
Total of activities	14.459.344	7.812.720	258.542	6.388.082	2.970.454	3.417.627
FISIM (-)	-408.025					
Gross value added, basic prices	14.051.319					
Taxes on products and services and import less subsidies (+)	3.167.103					
Gross domestic product (GDP) at market prices	17.218.422					

5.2 B&H - GENERATION OF INCOME ACCOUNT IN 2006, CURRENT PRICES
000 KM

Section of activity	Gross value added	Compensation of employees	Net other taxes on production	Gross operating surplus / mixed income	Consumption of fixed capital	Net operating surplus / mixed income
A Agriculture, hunting and forestry	1.613.051	212.999	-34.504	1.434.557	171.761	1.262.796
B Fishing	4.662	4.242	-8	428	1.725	-1.297
C Mining and quarrying	356.941	292.105	12.156	52.680	88.851	-36.171
D Manufacturing	1.989.250	1.331.619	48.108	609.522	486.296	123.227
E Electricity, gas and water supply	826.193	472.769	24.845	328.580	361.978	-33.398
F Construction	829.412	508.524	21.657	299.230	104.210	195.020
G Wholesale and retail trade; repair of motor vehicles, motorcycles	2.336.996	1.131.637	61.063	1.144.297	316.018	828.279
H Hotels and restaurants	427.040	215.212	10.544	201.285	48.813	152.471
I Transport, storage and communication	1.352.634	650.654	15.299	686.681	412.985	273.695
J Financial intermediation	694.765	356.547	18.460	319.758	64.924	254.834
K Real estate, renting and business activities	1.876.598	459.250	20.833	1.396.514	572.175	824.340
Of which: imputed rent	1.114.312	-	-	1.114.312	484.168	630.144
L Public administration and defence; compulsory social security	1.654.973	1.479.594	28.882	146.497	146.497	-
M Education	782.763	712.563	14.821	55.379	40.769	14.610
N Health and social work	730.445	621.742	14.072	94.631	73.798	20.833
O Other community, social and personal service activities	349.337	257.158	9.419	82.759	44.385	38.374
Total of activities	15.825.062	8.706.615	265.648	6.852.798	2.935.185	3.917.613
FISIM (-)	-468.589					
Gross value added, basic prices	15.356.473					
Taxes on products and services and import less subsidies (+)	3.976.532					
Gross domestic product (GDP) at market prices	19.333.005					

5.3 B&H - GENERATION OF INCOME ACCOUNT IN 2007, CURRENT PRICES

000 KM

Section of activity	Gross value added	Compensation of employees	Net other taxes on production	Gross operating surplus / mixed income	Consumption of fixed capital	Net operating surplus / mixed income
A Agriculture, hunting and forestry	1.735.435	231.584	-55.293	1.559.144	186.934	1.372.211
B Fishing	7.289	5.708	69	1.511	1.743	-231
C Mining and quarrying	432.479	338.416	12.785	81.278	92.462	-11.184
D Manufacturing	2.451.520	1.549.788	54.549	847.183	561.306	285.877
E Electricity, gas and water supply	761.748	521.552	18.229	221.966	358.745	-136.779
F Construction	1.058.668	599.177	24.152	435.339	112.482	322.858
G Wholesale and retail trade; repair of motor vehicles, motorcycles	2.699.737	1.361.447	68.996	1.269.294	332.970	936.324
H Hotels and restaurants	468.597	257.178	11.769	199.650	52.887	146.764
I Transport, storage and communication	1.492.607	740.483	12.105	740.019	410.668	329.351
J Financial intermediation	854.345	450.755	23.525	380.064	81.379	298.686
K Real estate, renting and business activities	1.943.215	489.199	22.591	1.431.425	579.905	851.520
Of which: imputed rent	1.112.128	-	-	1.112.128	483.220	628.908
L Public administration and defence; compulsory social security	1.866.652	1.673.061	31.343	162.248	162.248	-
M Education	900.944	821.714	16.869	62.361	47.549	14.812
N Health and social work	832.401	716.169	16.065	100.166	74.955	25.211
O Other community, social and personal service activities	422.394	298.454	10.863	113.077	50.492	62.584
Total of activities	17.928.031	10.054.685	268.618	7.604.727	3.106.724	4.498.003
FISIM (-)	-626.870					
Gross value added, basic prices	17.301.161					
Taxes on products and services and import less subsidies (+)	4.534.718					
Gross domestic product (GDP) at market prices	21.835.878					

5.4 B&H - GENERATION OF INCOME ACCOUNT IN 2008, CURRENT PRICES

000 KM

Section of activity	Gross value added	Compensation of employees	Net other taxes on production	Gross operating surplus / mixed income	Consumption of fixed capital	Net operating surplus / mixed income
A Agriculture, hunting and forestry	1.842.644	271.810	-50.331	1.621.165	223.661	1.397.504
B Fishing	8.036	7.143	-96	989	1.760	-771
C Mining and quarrying	512.295	396.453	15.326	100.516	99.506	1.010
D Manufacturing	2.827.418	1.845.496	76.022	905.900	606.395	299.505
E Electricity, gas and water supply	1.022.046	600.187	33.353	388.505	362.970	25.536
F Construction	1.340.151	739.798	33.703	566.650	134.410	432.240
G Wholesale and retail trade; repair of motor vehicles, motorcycles	3.299.982	1.662.295	91.953	1.545.734	388.966	1.156.768
H Hotels and restaurants	496.686	266.874	15.056	214.756	55.989	158.768
I Transport, storage and communication	1.661.487	844.777	8.619	808.092	430.268	377.823
J Financial intermediation	893.645	531.876	29.443	332.326	98.071	234.255
K Real estate, renting and business activities	2.059.518	567.229	30.037	1.462.252	599.211	863.041
Of which: imputed rent	1.128.851	-	-	1.128.851	490.486	638.365
L Public administration and defence; compulsory social security	2.191.304	1.980.557	35.418	175.329	175.329	-
M Education	1.114.566	1.023.532	20.391	70.642	56.192	14.451
N Health and social work	1.091.845	966.111	19.874	105.861	82.412	23.449
O Other community, social and personal service activities	473.797	360.773	14.056	98.967	56.046	42.921
Total of activities	20.835.420	12.064.910	372.825	8.397.685	3.371.185	5.026.500
FISIM (-)	-682.945					
Gross value added, basic prices	20.152.475					
Taxes on products and services and import less subsidies (+)	4.606.518					
Gross domestic product (GDP) at market prices	24.758.993					

5.5 B&H - GENERATION OF INCOME ACCOUNT IN 2009, CURRENT PRICES

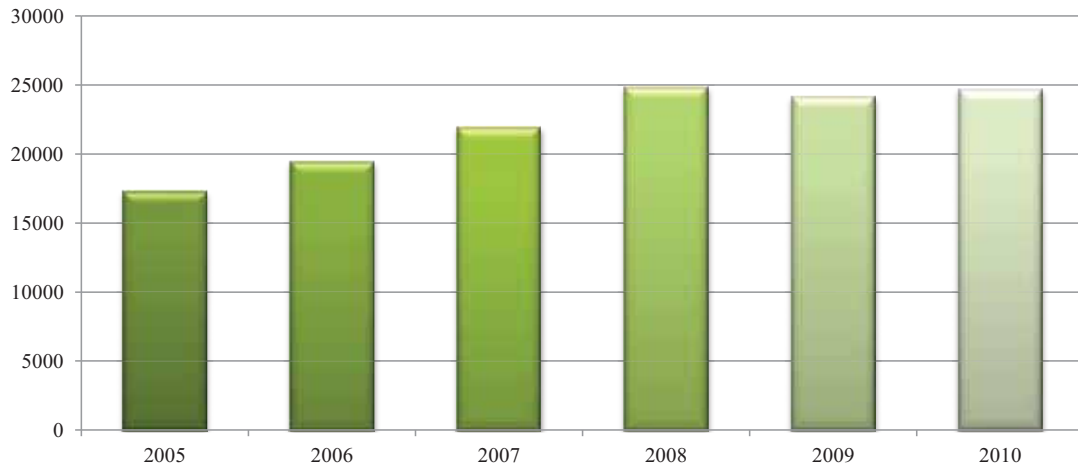
000 KM

Section of activity	Gross value added	Compensation of employees	Net other taxes on production	Gross operating surplus / mixed income	Consumption of fixed capital	Net operating surplus / mixed income
A Agriculture, hunting and forestry	1.759.391	256.721	-47.106	1.549.776	209.196	1.340.580
B Fishing	10.546	7.623	-262	3.185	1.978	1.207
C Mining and quarrying	500.558	407.408	3.401	89.749	103.207	-13.458
D Manufacturing	2.588.548	1.771.426	18.339	798.784	681.605	117.179
E Electricity, gas and water supply	1.061.498	638.290	16.959	406.249	378.885	27.364
F Construction	1.269.079	678.457	9.858	580.764	144.857	435.907
G Wholesale and retail trade; repair of motor vehicles, motorcycles	3.143.085	1.713.161	31.834	1.398.091	422.525	975.565
H Hotels and restaurants	484.537	263.469	4.645	216.423	59.485	156.938
I Transport, storage and communication	1.648.936	871.495	-21.964	799.406	451.632	347.774
J Financial intermediation	915.915	549.470	13.019	353.426	110.446	242.980
K Real estate, renting and business activities	2.157.793	583.694	15.820	1.558.279	610.677	947.603
Of which: imputed rent	1.164.415	-	-	1.164.415	505.938	658.477
L Public administration and defence; compulsory social security	2.361.376	2.175.982	5.895	179.500	179.500	-
M Education	1.160.528	1.078.493	2.581	79.454	57.398	22.057
N Health and social work	1.095.379	975.347	3.164	116.868	90.278	26.591
O Other community, social and personal service activities	482.531	366.731	3.002	112.798	55.890	56.908
Total of activities	20.639.700	12.337.765	59.183	8.242.752	3.557.559	4.685.193
FISIM (-)	-675.832					
Gross value added, basic prices	19.963.868					
Taxes on products and services and import less subsidies (+)	4.087.010					
Gross domestic product (GDP) at market prices	24.050.878					

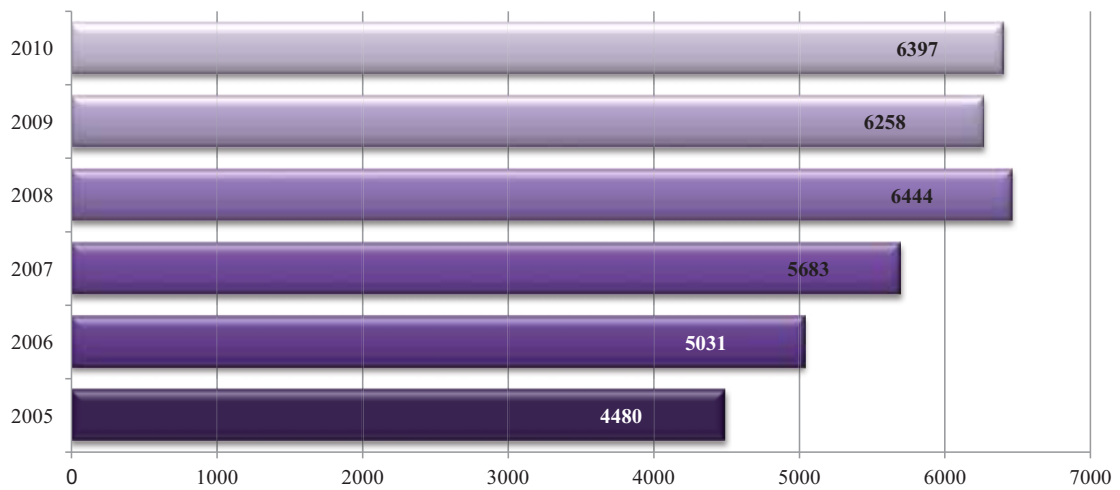
5.6 B&H - GENERATION OF INCOME ACCOUNT IN 2010, CURRENT PRICES
000 KM

Section of activity	Gross value added	Compensation of employees	Net other taxes on production	Gross operating surplus / mixed income	Consumption of fixed capital	Net operating surplus / mixed income
A Agriculture, hunting and forestry	1.734.973	261.353	-49.822	1.523.442	213.940	1.309.502
B Fishing	6.720	6.988	-370	102	1.863	-1.761
C Mining and quarrying	493.750	418.235	3.828	71.687	106.919	-35.233
D Manufacturing	2.748.779	1.773.294	18.069	957.418	664.953	292.465
E Electricity, gas and water supply	1.098.299	648.186	16.367	433.747	386.739	47.008
F Construction	1.076.319	631.113	8.441	436.765	142.829	293.936
G Wholesale and retail trade; repair of motor vehicles, motorcycles	3.257.269	1.720.388	33.769	1.503.112	421.877	1.081.234
H Hotels and restaurants	520.797	273.807	5.048	241.942	64.626	177.316
I Transport, storage and communication	1.694.003	881.601	-16.317	828.718	455.437	373.281
J Financial intermediation	935.156	543.654	13.489	378.013	109.089	268.923
K Real estate, renting and business activities	2.228.307	616.466	16.222	1.595.619	620.324	975.295
Of which: imputed rent	1.164.876	0	0	1.164.876	506.139	658.737
L Public administration and defence; compulsory social security	2.274.239	2.081.883	6.125	186.230	186.230	0
M Education	1.181.404	1.098.516	2.876	80.013	58.710	21.303
N Health and social work	1.140.042	1.006.510	3.886	129.646	101.509	28.137
O Other community, social and personal service activities	520.076	394.373	1.744	123.960	56.758	67.202
Total of activities	20.910.132	12.356.365	63.355	8.490.414	3.591.805	4.898.609
FISIM (-)	-674.924					
Gross value added, basic prices	20.235.208					
Taxes on products and services and import less subsidies (+)	4.348.697					
Gross domestic product (GDP) at market prices	24.583.905					

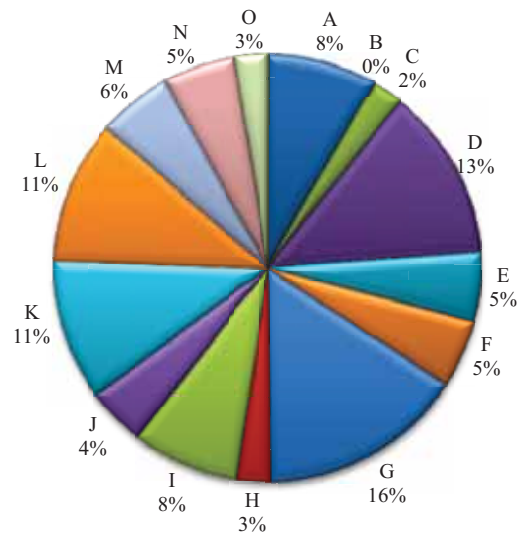
Gross domestic product, million KM



GDP per capita for BiH, KM



Structure of value added at basic prices by activities, 2010



GROSS DOMESTIC PRODUCT BY EXPENDITURE APPROACH

Experimental estimates

2005 – 2010

Introductory remarks

Gross Domestic Product (GDP) based on expenditure approach at current prices is estimated at 27,895 millions of KM in 2009 and 27,954 millions of KM in 2010, with a nominal increase of 0.21 % from 2009 to 2010. In volume terms (at constant prices) a increase in GDP was 1.01 % in 2009, which implies the decrease in prices of 0.79% in 2010.

Household consumption expenditure reached the amount of 21,873 millions of KM in 2009 and 22,084 millions of KM in 2010. This represents a nominal increase of 0.96 %. At constant prices (after discounting the effect of price changes) consumption decreased in 2010 by 0.84 %. A breakdown of household consumption expenditure by purposes in nominal terms have the greatest growth in categories: Alcoholic beverages, tobacco and narcotics 6.08% and Transport 12.47%. In real terms household expenditure on Alcoholic beverages, tobacco and narcotics decreased 11.67% and Transport increased 6.85%. Categories Health, Restaurants and hotels and Recreation and culture recorded nominal and real decreases. The largest category of Household final consumption expenditure, Expenditure on food and non-alcoholic beverages decreased 2.62% in nominal terms and 2.36% in real terms.

General government expenditure is estimated at 5,734 millions of KM in 2009 and 5,779 millions of KM in 2010. Expenditure for this categories grew 0.80 % in nominal terms and 1.73 % in real terms. The share in GDP grew from 20.56 % in 2009 to 20.68 % in 2010.

Gross fixed capital formation is estimated at 5,951 millions of KM in 2009 and 5,344 millions of KM in 2010. In 2010 this categories decreased by 10.20 % nominally and by 11.06 % really. The breakdown of gross fixed capital formation by type of assets shows nominal and real decreases in all type of assets. The gross fixed capital formation share in GDP decreased from 21.34 % in 2009 to 19.12% in 2010.

Export of goods and services in 2010 registered increase with respect to 2009 by 18.86 % in nominal terms and 17.47 % in real terms. Import of goods and services in 2010, also registered increase with respect to 2009 by 9.32 % in nominal terms and 3.60 % in real terms.

¹ For the GDP were taken preliminary data, due to activities on the implementation of the new Classification of Activities B&H 2010.

NOTES ON METHODOLOGY

Concepts and definitions

Gross domestic product (GDP) by expenditure approach is defined as total domestic final consumption corrected by external trade balance with the rest of the world. The main components of GDP by expenditure are:

- Household final consumption expenditure,
- Final consumption of non-profit institutions serving households,
- Final consumption of general government,
- Gross capital formation,
- Export and import of goods and services.

Household final consumption expenditure consists of expenditure incurred by resident households on consumption goods and services for the direct satisfaction of human needs and wants. Final consumption expenditure refers to the expenditures incurred by resident households, whether these expenditures are incurred within the economic territory or abroad.

Expenditure should be recorded when the payable is created, that is when the purchaser incur a liability to the seller. This implies that expenditures on goods are to be recorded at the time their ownership changes while expenditures on services are recorded when the delivery of the services is completed.

Household expenditure is recorded at purchasers' prices paid by households including any taxes on products which may be payable at the time of purchase.

Household final consumption expenditure includes the following main components:

- The purchase of goods and services,
- Income in kinds, like goods and services received as income in kind from the employer,
- Goods and services produced as outputs of unincorporated enterprises owned by household that are retained for consumption by members of the household,
- Services produced by domestic paid staff,
- Services of owner-occupied dwellings,
- Explicit and imputed services charges on household uses of financial intermediation services provided by bank, insurance companies, pension funds etc.,
- Payments by households for licenses, permits, etc. which are regarded as purchases of services,
- The purchase of output at not economically significant prices.

Household final consumption expenditure excludes the following main components:

- Social transfers in kind,
- Expenditures by households owning unincorporated enterprises when incurred for business purposes,
- The purchase of dwellings,
- Expenditure on valuables,
- Acquisitions of a non-produced assets,
- All payments which are to be regarded as taxes,
- Voluntary transfers in cash or in kind by households to NPISHs.

Final consumption expenditure of non-profit institutions serving households consist of goods and services which non-profit institutions provide to households free or at prices that are not economically significant.

Their principal resources, apart from occasional sales, are derived from voluntary contributions in cash or in kind from the general public, corporations, and government. They may also receive transfers from non-residents.

The non-profit institutions include the following main kinds of NPISHs that provide non-market goods and services to households:

- Trade unions, professional or learned societies, consumers' associations, political parties, churches or religious societies, social, cultural, recreational and sports clubs,
- Charities, relief and aid organizations financed by voluntary transfers in cash or in kind from other institutional units.

Final consumption expenditure of NPISHs includes two separate categories:

- Non-market output other than own-account capital formation, which is measured by production costs less incidental sales,
- Expenditure on market goods and services that are supplied without transformation and free of charge to households.

Final consumption of general government - The general government sector consists of the totality of institutional units, which, in addition to fulfilling their political responsibilities and their role of economic regulation, produce principally non-market services (possibly goods) for individual or collective consumption and redistribute income and wealth.

Final consumption expenditure of general government includes two categories of expenditure:

- Non-market output other than own-account capital formation, which is measured by production costs, less incidental sales
- Purchases by general government of goods and services produced by market producers that are supplied to households, without any transformation, as social transfer in kind.

Final consumption expenditure of general government is measured as difference between non-market output and occasional sales on the market plus purchase of goods and services for free distribution.

Individual government consumption expenditure comprises payments for non-market government services (education, health, social care, culture, sport, etc.) and market goods and services supplied directly to households as social transfer in kind.

Collective government consumption expenditure consists mostly of the provision of security and defense, the maintenance of law and order, legislation and regulation, the protection of environment, research and development etc. All members of the community can benefit from such services.

Gross capital formation

Gross capital formation consists of:

- Gross fixed capital formation,
- Changes in inventories,
- Acquisitions less disposals of valuables.

Gross fixed capital formation consists of producers' acquisitions less disposals of fixed assets during the reference period plus certain additions to the value of non-produced assets realized by the productive activity of producers or institutional units. Fixed assets are tangible or intangible assets produced as outputs from processes of production that are themselves used repeatedly, or continuously, in processes of production for more than one year; including major improvements to tangible non-produced assets and costs associated with the transfers of ownership of non-produced assets.

Gross fixed capital formation is recorded when the ownership of the fixed assets is transferred to the institutional unit that intends to use them in production.

Gross fixed capital formation is valued at purchasers' prices including installation charges and other costs of ownership transfer.

Changes in inventories **are measured by the value of the entries into inventories less the value of withdrawals and** the value of any recurrent losses of goods held in inventories.

Inventories consist of the following categories:

- Materials and supplies,
- Work in progress,
- Finished goods,
- Goods for resale.

Changes in inventories should be valued at the time of entering the inventories or at the time of withdrawal. The price used should be consistent with valuation of output, intermediate consumption and final uses.

Acquisition less disposals of valuables – Valuables are non-financial assets that are not used primarily for production or consumption, do not deteriorate (physically) over time under normal conditions and that are acquired and held primarily as stores of value. Valuables encompass the following types of goods: precious stones and metals; antiques and other art objects; other valuables such as jewelry of precious stones and metals and collectors items.

Acquisitions of valuables are valued at the purchasers' prices paid for them and disposals of valuables are valued at the prices received by sellers, after deducting any fees paid to intermediaries.

Exports and imports of goods occur when there are changes of ownership of goods between residents and non-residents, regardless of whether there are corresponding physical movements of goods across borders. Exports and imports exclude all transaction in land, buildings and non-movable non-produced assets, and in financial assets.

Exports and imports of goods should be recorded when the ownership of the goods is transferred.

Exports and imports of goods are to be valued free on board at the border of the exporting country (fob). This value consist of:

- The value of the goods at basic prices;
- Plus related transport and distributive services up to that point of the border including the cost of loading on to a carrier for onward transportation, where appropriate.

Exports and imports of services consist of all services rendered by residents to non-residents or vice versa. The services, which belong to export and import of services, must have been produced as outputs from processes of production. They do not include flows of primary income and flows of property income. The more important types of import and export of services are: construction services, installation of equipment, transportation, tourism, insurance, financial services, and license fees.

Exports and imports of services are recorded at the time at which are rendered, which mostly coincides with the time at which the services are produced.

Sources and methods

A description of the main source data available for the compilation of GDP by expenditure components is provided followed by a description of the methods used for the calculation of each of these components:

Sources

Foreign trade data

The main data sources for external trade statistics are custom declarations collected by the Indirect Taxation Authority of BH and taken over by Agency for Statistics. The observation unit is each import and exports shipment with the rest of the world and is uniform as regards the type of goods, country of destination or origin, and for which the custom declaration was filled. The external trade statistics data are produced and published on a monthly basis.

The external trade are monitored according to the special trade system (relaxed definition), which means that beside regular import and export transactions also inward and outward processing as well as processing carried out in custom free zones are included.

Data on imports and exports are available based on the Customs Tariff of BH, which uses a 10-digit code system for the identification of the goods. The first 6 digits correspond to the Harmonized System (HS), the international nomenclature for the classification of foreign trade data. The additional two digits are harmonized with the EU nomenclature (Combined Nomenclature-CN), and the last 2 digits are an extension of the classification to meet specific needs of BH.

The import data are valued in c.i.f. prices and export data in f.o.b. prices.

Household budget survey

The first household budget survey was implemented in Bosnia and Herzegovina in 2004. The main purpose of the survey was collecting information on the structure and levels of consumption expenditure by the main social, economic and territorial characteristics of the households by collecting data from a sample of households by mean of interviews and diaries kept by households on their expenditures and production for self consumption.

The data on household expenditure collected by survey were broken down in about 400 consumption items. Collected data were originally classified using a specific classification for the survey and for needs of expenditure calculation reclassified in accordance to the COICOP and than CPA and NACE classification. Estimates for the total population of BiH were obtained by grossing up the survey's results on national per capita expenditures of each item by the official estimate of the population of the BiH. Sampling errors were calculated for each item to provide an indication of the accuracy of the estimates.

In 2005 and 2006 the survey was not carry out.

The survey was carried out again in 2007, using the same methodology that was applied in 2004. The data from the survey were not available during the compilation of GDP in 2007. The next household budget survey is planned for 2011.

PRODCOM survey

The subject of the PRODCOM survey is industrial production, accomplished at the territory of Bosnia and Herzegovina in the period of one calendar year. The survey collects data on volume and value of production and sales of industrial production, at the detailed level of a single product specified in the nomenclature of industrial products.

The coverage of the PRODCOM survey is not full, and it is based on the address list of statistical units used for annual statistical surveys on industry. The coverage in the Federal Institute of Statistics is limited to those reporting units that have ten or more employees while in the Statistical Institute of Republic Srpska and the Statistical Branch of District Brcko all reporting units from the address list are included in the survey. An adjustment for non-coverage was made using coefficients (the ratio of total output to the output covered by the survey) at the level of the NACE class. All products belonging to a class were adjusted with the same coefficient calculated at the class level.

Balance of payment

Compilation of the balance of payment statistics in Bosnia and Herzegovina is the responsibility of the Central Bank of Bosnia and Herzegovina. For the compilation of gross domestic product by expenditure data on exports and imports of goods and services were used.

Export and import goods are valued by f.o.b. prices. The f.o.b. prices (free on board) of exports and imports is the market value of the goods at the point of uniform valuation, (the custom frontier of the economy from which they are exported); it is equal to the c.i.f. price less the costs of transportation and insurance charges, between the custom frontier of the exporting (importing) country and that of the importing (exporting) country.

Exports and imports of services are classified into three groups: transportation, travel and other services. Transportation services comprise services of transport of goods and passengers.

Investment survey

The survey on the gross fixed capital formation has been carried out annually since 2004 by statistical institutions in Bosnia and Herzegovina. The survey covers all legal units and detailed data on product groups of tangible and intangible fixed assets and costs associated with acquisition of non-produced non-financial assets (land improvement work and transaction costs of ownership of non-produced non-financial assets). In the survey gross fixed capital formation is divided into acquisitions of new assets, acquisition of existing assets and disposals of existing assets.

Output by economic activity

Output by economic activities has been calculated on four-digit level of NACE classification by entities statistical institutions and has been used for estimation of different type services.

Changes in inventories by economic activity

Calculation of changes in inventories is based on accounting statement data. For the compilation of GDP by expenditure, the entities statistical offices have provided data on inventories. Only data for enterprises have been available. Inventories consist of the following categories: finished goods, work in progress, trade goods and raw materials and supplies.

Retail price indices

Until 2005 the Retail Prices Index (RPI) has been used as the main indicator of inflation in the BiH. The RPI has been available only at the level of the entities of Bosnia and Herzegovina.

Consumer price indices

The Consumer Price Index (CPI) is a measure of the average change in prices over time of a market basket of goods and services and is used as measure of consumer price inflation in the entities and in Bosnia and Herzegovina as a whole. The CPI has been compiled starting with the data for January 2005. The period adopted as the base of calculation for the indices is December 2004.

Population estimation

For purposes of GDP compilation by expenditure in final uses, the population estimates made by the BHAS have been used. It is important to mention that these population estimates do not coincide with the aggregate obtained by summing up the respective independent estimates made by the entities.

Methods

Household consumption expenditure

Estimates of household consumption expenditure for the year 2004 are partially based on the results of the household budget survey for that year and on data on foreign trade and domestic production of consumer goods and services. Estimates for other years are based on imports and domestic production statistics and/or extrapolation of the 2004 estimates using relevant indicators. The household consumption of electricity, gas and water is based on the reports of the utility enterprises.

Estimates of consumption of agriculture products are compiled at detailed level of products. For the year 2004 these estimates are mainly based on the results of the HBS 2004. The respective estimates for other years are based on the extrapolation of the quantities consumed in 2004 by the growth rate of the supply of agriculture products and changes in the consumer prices for the respective products, as well as data of turnover of agricultural products in domestic market

Estimates of consumption of manufactured non-food and food products for the year 2004 were based on data on foreign trade statistics, reports by enterprises on production, and the household budget survey. Estimates for the consumption of these items in the following years are mainly based on data on the supply of these items to the domestic market derived from the foreign trade statistics and the reports of enterprises on production.

The main sources for the compilation of the estimates of consumption of services were the HBS 2004 and the respective estimates of output by economic activity compiled by the entities' institute of statistics and the Brcko branch of the BHAS. Estimates for other years are mostly based on the extrapolation of the 2004 estimates by volume and price indicators.

Estimates of expenditures of residents abroad and non-residents in the territory of BiH were obtained from the respective estimates of the balance of payments statistics compiled by the CBBH.

Consumption of non-profit institutions serving households (NPISHs)

The estimates of consumption of NPISHs are based on the respective estimates of output of these institutions compiled by the entities' statistical institutions within the framework of their work in compiling GDP estimates based on the production approach. Output of these institutions is measured by the sum of the cost components of production, that is, compensation of employees, consumption of goods and services for production, other taxes on production, and consumption of fixed capital)

General Government consumption expenditure

The estimates are based on the analysis of the data collected and processed by the statistical institutions of BiH on the execution of the budgets by all government institutions comprising the state, the entities, cantons, local authorities, and extra budgetary funds. It also includes the expenditures of the health and pension funds. Consumption is measured as the sum of the production costs (compensation of employees, consumption of goods and services for production, other taxes on production, and consumption of fixed capital).

Estimates of gross fixed capital formation

Estimates on investment in machinery and equipment and motor vehicles are obtained from the detailed analysis of imports and domestic production of capital goods.

Estimates of investment in construction projects other than dwellings are obtained from financial data reported by legal entities in their returns to the annual survey on investment carried out by the institutes of statistics of the entities in conjunction with the BHAS. Estimates on investment on construction by producers not registered as legal entities (entrepreneurs) are based on partial data reported to the statistical institutions supplemented with imputations for the expenditures not covered by the source data.

Estimates on the construction of dwellings are based on the financial data reported by enterprises, partial data on construction by individuals, and assumptions regarding coverage.

Estimates of changes in inventories

These estimates were taken as the differences between the opening and closing book values reported by enterprises and government institutions. No attempt was made for adjusting the data in order to eliminate holding gains (part of the change in value due to changes in prices during the time the inventories are held by producers in the year of reference) due to the lack of appropriate price indices.

Imports and exports of goods and services

The estimates of total imports and exports of goods and services were taken from the corresponding estimates of balance of payment statistics compiled by the CBBH. Imports and exports of services, in accordance with the definitions of the national accounts, do not include payments between residents and non-residents related to primary income (income from property and labor).

Estimates at constant prices

Estimates of GDP by expenditure were calculated at prices of the previous year, thus allowing the comparison of the data between these two years on a quantitative basis (after eliminating the effect of changes in prices). The implicit deflators of the aggregate and its component are of a Paasche type, which implies that they reflect not only changes in prices but also changes in the composition of the expenditures between the years compared. A description of the main sources and methods by component of final expenditures is as follows:

Household consumption expenditure: estimates of consumption of agriculture products at prices of previous year were obtained by revaluating the quantities consumed and using the average prices of previous year. For all other items composing the consumption of households, estimates at constant prices were calculated at the four-digit level of the COICOP classification by deflation of the respective current price values with the most appropriate component of the Consumer Price Index (CPI). Expenditures of resident households abroad were deflated by relevant components of the consumer price indices of the countries of main destination of tourism. The consumption of non-residents was deflated by relevant components of the CPI.

NPISHs consumption expenditure: estimates at constant prices were obtained as the sum of the cost component of consumption recalculated at prices of previous year, where purchases were deflated by the general CPI and remuneration of employees at constant prices are obtained by extrapolation of the previous year data by the change in the number of employees.

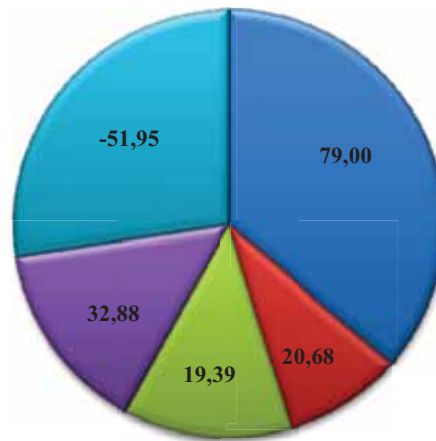
General government consumption expenditure: were obtained as the sum of the cost component at constant prices. Purchases of goods and services were deflated by the general CPI and the remuneration of employees was based on the changes in the number of employees.

Gross fixed capital formation: Calculations of acquisition of machinery and equipment at constant prices were obtained by deflation of the current values. The deflator was obtained as the weighted average of the relevant unit value indices and price indices of the main trade partners for these capital goods. The latter were used as price indicators for items for which the unit value indices were less reliable. Estimates of construction assets (buildings and structures) were deflated using the implicit deflator of output of the construction industry.

Exports and imports of goods and services: Unit value indices of a Paasche type for exports and imports of goods were specifically compiled for the calculations at constant prices. These indices, based on the detailed data of foreign trade were used for the deflation of the respective values of exports and imports at current prices. In cases when the unit value indices, due to low quality of input data were not used, the calculation at constant prices was done by deflating the value of the current period with the producer index of the most important import partners. Exports and imports of services were deflated by price indices.

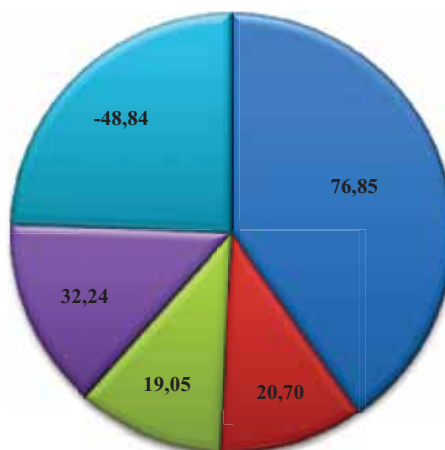
TABLES AND GRAPHS

**Gross domestic product by expenditure - current prices 2010
(000 KM)**



- Households final consumption expenditure and final consumption expenditure of NPUSD
- General government final consumption expenditure
- Gross capital formation
- Export of goods and services
- Import of goods and services

**Gross domestic product by expenditure - constant prices 2010
(000 KM)**



1.1 GROSS DOMESTIC PRODUCT, BY EXPENDITURE APPROACH, AT CURRENT PRICES

	000 KM					
Expenditure categories	2005	2006	2007	2008	2009	2010
Households final consumption expenditure	16.515.383	18.063.983	19.911.556	22.468.038	21.630.506	21.827.996
Final consumption expenditure of NPISH	168.389	177.000	205.864	256.490	243.041	256.328
General government final consumption expenditure	3.814.190	4.187.921	4.697.252	5.570.487	5.734.140	5.779.755
Individual government consumption	1.701.848	1.903.476	2.135.059	2.627.998	2.658.878	2.725.905
Collective government consumption	2.112.342	2.284.445	2.562.193	2.942.489	3.075.262	3.053.850
Gross capital formation	4.802.348	4.339.567	6.460.127	7.953.524	5.837.598	5.419.842
Gross fixed capital formation	4.789.466	4.532.432	6.142.706	7.565.073	5.951.728	5.344.469
Change in inventories	12.882	-192.865	317.421	388.451	-114.130	75.373
Export of goods and services	5.583.000	7.024.400	8.123.100	9.102.426	7.733.600	9.192.300
Goods (fob)	4.082.000	5.255.700	6.046.500	6.888.426	5.711.500	7.293.800
Services	1.501.000	1.768.700	2.076.600	2.214.000	2.022.100	1.898.500
Import of goods and services (minus)	12.643.600	12.640.400	14.973.600	17.235.400	13.283.700	14.521.700
Goods (fob)	11.916.600	11.916.900	14.147.600	16.320.600	12.380.600	13.645.600
Services	727.000	723.500	826.000	914.800	903.100	876.100
Gross domestic product	18.239.710	21.152.471	24.424.299	28.115.565	27.895.185	27.954.521

1.2 GROSS DOMESTIC PRODUCT, BY EXPENDITURE APPROACH, AT CURRENT PRICES, STRUCTURE

	%					
Expenditure categories	2005	2006	2007	2008	2009	2010
Households final consumption expenditure	90,55	85,40	81,52	79,91	77,54	78,08
Final consumption expenditure of NPISH	0,92	0,84	0,84	0,91	0,87	0,92
General government final consumption expenditure	20,91	19,80	19,23	19,81	20,56	20,68
Individual government consumption	9,33	9,00	8,74	9,35	9,53	9,75
Collective government consumption	11,58	10,80	10,49	10,47	11,02	10,92
Gross capital formation	26,33	20,52	26,45	28,29	20,93	19,39
Gross fixed capital formation	26,26	21,43	25,15	26,91	21,34	19,12
Change in inventories	0,07	-0,91	1,30	1,38	-0,41	0,27
Export of goods and services	30,61	33,21	33,26	32,38	27,72	32,88
Goods (fob)	22,38	24,85	24,76	24,50	20,47	26,09
Services	8,23	8,36	8,50	7,87	7,25	6,79
Import of goods and services (minus)	69,32	59,76	61,31	61,30	47,62	51,95
Goods (fob)	65,33	56,34	57,92	58,05	44,38	48,81
Services	3,99	3,42	3,38	3,25	3,24	3,13
Gross domestic product	100,00	100,00	100,00	100,00	100,00	100,00

2.1 GROSS DOMESTIC PRODUCT, BY EXPENDITURE APPROACH, AT CONSTANT PRICES
(at prices of previous year)

	000 KM					
Expenditure categories	2005	2006	2007	2008	2009	2010
Households final consumption expenditure	16.515.383	17.250.995	19.131.762	21.107.011	21.593.088	21.403.585
Final consumption expenditure of NPISH	168.389	168.475	188.866	238.751	243.968	251.007
General government final consumption expenditure	3.814.190	3.917.370	4.279.306	4.853.514	5.609.745	5.833.231
Individual government consumption	1.701.848	1.762.843	1.942.081	2.211.873	2.663.494	2.705.408
Collective government consumption	2.112.342	2.154.527	2.337.225	2.641.641	2.946.251	3.127.823
Gross capital formation	4.802.348	4.143.545	6.114.810	7.494.576	5.757.269	5.367.117
Gross fixed capital formation	4.789.466	4.325.315	5.809.953	7.132.991	5.871.834	5.293.309
Change in inventories	12.882	-181.770	304.857	361.585	-114.565	73.808
Export of goods and services	5.583.000	6.440.206	7.828.754	8.621.283	7.909.761	9.084.964
Goods (fob)	4.082.000	4.726.349	5.782.251	6.560.406	5.879.948	7.225.877
Services	1.501.000	1.713.857	2.046.502	2.060.877	2.029.813	1.859.087
Import of goods and services (minus)	12.643.600	11.942.398	14.186.793	16.186.018	13.509.642	13.762.329
Goods (fob)	11.916.600	11.248.726	13.335.218	15.372.139	12.602.915	12.895.316
Services	727.000	693.672	851.575	813.879	906.727	867.013
Gross domestic product	18.239.710	19.978.193	23.356.704	26.129.117	27.604.188	28.177.575

2.2 GROSS DOMESTIC PRODUCT, BY EXPENDITURE APPROACH, AT CONSTANT PRICES, STRUCTURE

	%					
Expenditure categories	2005	2006	2007	2008	2009	2010
Households final consumption expenditure	90,55	86,35	81,91	80,78	78,22	75,96
Final consumption expenditure of NPISH	0,92	0,84	0,81	0,91	0,88	0,89
General government final consumption expenditure	20,91	19,61	18,32	18,58	20,32	20,70
Individual government consumption	9,33	8,82	8,31	8,47	9,65	9,60
Collective government consumption	11,58	10,78	10,01	10,11	10,67	11,10
Gross capital formation	26,33	20,74	26,18	28,68	20,86	19,05
Gross fixed capital formation	26,26	21,65	24,87	27,30	21,27	18,79
Change in inventories	0,07	-0,91	1,31	1,38	-0,42	0,26
Export of goods and services	30,61	32,24	33,52	32,99	28,65	32,24
Goods (fob)	22,38	23,66	24,76	25,11	21,30	25,64
Services	8,23	8,58	8,76	7,89	7,35	6,60
Import of goods and services (minus)	69,32	59,78	60,74	61,95	48,94	48,84
Goods (fob)	65,33	56,31	57,09	58,83	45,66	45,76
Services	3,99	3,47	3,65	3,11	3,28	3,08
Gross domestic product	100,00	100,00	100,00	100,00	100,00	100,00

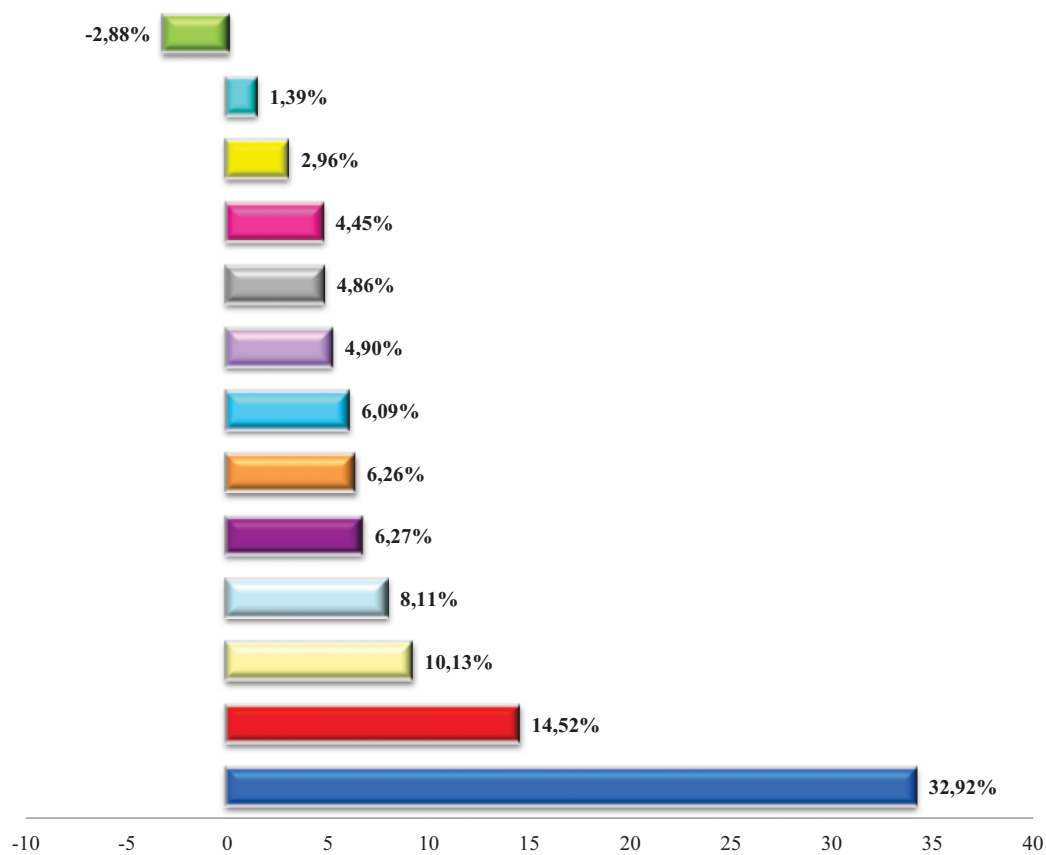
3.1 GROSS DOMESTIC PRODUCT, BY EXPENDITURE APPROACH, NOMINAL INDICES
(previous year = 100)

Expenditure categories	2005	2006	2007	2008	2009	2010
Households final consumption expenditure	100,00	109,38	110,23	112,84	96,27	100,91
Final consumption expenditure of NPISH	100,00	105,11	116,31	124,59	94,76	105,47
General government final consumption expenditure	100,00	109,80	112,16	118,59	102,94	100,80
Individual government consumption	100,00	111,85	112,17	123,09	101,18	102,52
Collective government consumption	100,00	108,15	112,16	114,84	104,51	99,30
Gross capital formation	100,00	90,36	148,87	123,12	73,40	92,84
Gross fixed capital formation	100,00	94,63	135,53	123,16	78,67	89,80
Change in inventories	-	-	-	-	-29,38	-66,04
Export of goods and services	100,00	125,82	115,64	112,06	84,96	118,86
Goods (fob)	100,00	128,75	115,05	113,92	82,91	127,70
Services	100,00	117,83	117,41	106,62	91,33	93,89
Import of goods and services (minus)	100,00	99,97	118,46	115,11	77,07	109,32
Goods (fob)	100,00	100,00	118,72	115,36	75,86	110,22
Services	100,00	99,52	114,17	110,75	98,72	97,01
Gross domestic product	100,00	115,97	115,47	115,11	99,22	100,21

3.2 GROSS DOMESTIC PRODUCT, BY EXPENDITURE APPROACH, REAL INDICES

Expenditure categories	2005	2006	2007	2008	2009	2010
Households final consumption expenditure	100,00	104,45	105,91	106,00	96,11	98,95
Final consumption expenditure of NPISH	100,00	100,05	106,70	115,98	95,12	103,28
General government final consumption expenditure	100,00	102,71	102,18	103,33	100,70	101,73
Individual government consumption	100,00	103,58	102,03	103,60	101,35	101,75
Collective government consumption	100,00	102,00	102,31	103,10	100,13	101,71
Gross capital formation	100,00	86,28	140,91	116,01	72,39	91,94
Gross fixed capital formation	100,00	90,31	128,19	116,12	77,62	88,94
Change in inventories	-	-	-	-	-29,49	-64,67
Export of goods and services	100,00	115,35	111,45	106,13	86,90	117,47
Goods (fob)	100,00	115,79	110,02	108,50	85,36	126,51
Services	100,00	114,18	115,71	99,24	91,68	91,94
Import of goods and services (minus)	100,00	94,45	112,23	108,10	78,38	103,60
Goods (fob)	100,00	94,40	111,90	108,66	77,22	104,16
Services	100,00	95,42	117,70	98,53	99,12	96,00
Gross domestic product	100,00	109,53	110,42	106,98	98,18	101,01

Households final consumption expenditure 2010, by COICOP



- Food and non-alcoholic beverages
- Housing
- Transport
- Miscellaneous goods and services
- Restaurants and hotels
- Alcoholic beverages, tobacco
- Furnishing
- Health
- Clothing and footwear
- Recreation and culture
- Communication
- Education
- Net purchases abroad

4.1 HOUSEHOLDS FINAL CONSUMPTION EXPENDITURE, AT CURRENT PRICES

							000 KM
Code	C O I C O P	2005	2006	2007	2008	2009	2010
01.00	Food and non-alcoholic beverages	5.446.493	5.949.685	6.567.571	7.536.367	7.379.567	7.186.571
02.00	Alcoholic beverages, tobacco and narcotics	1.085.198	1.163.431	1.187.104	1.232.670	1.288.803	1.367.179
03.00	Clothing and footwear	988.338	892.231	991.194	1.082.306	1.023.393	1.060.294
04.00	Housing, water, electricity, gas and other fuels	2.545.511	2.753.213	2.848.439	3.082.461	3.114.836	3.170.184
05.00	Furnishing, household equipment and routine household maintenance	1.230.269	1.295.537	1.509.125	1.577.551	1.344.599	1.328.998
06.00	Health	712.216	811.485	923.895	1.065.352	1.109.921	1.069.874
07.00	Transport	1.460.964	1.660.716	1.912.601	2.338.944	1.966.718	2.211.893
08.00	Communication	468.090	518.310	566.685	637.244	640.353	646.394
09.00	Recreation and culture	783.910	861.753	975.223	1.119.062	1.007.456	972.259
10.00	Education	188.882	224.641	260.733	293.612	300.348	303.337
11.00	Restaurants and hotels	1.253.810	1.388.232	1.540.996	1.551.648	1.429.489	1.368.998
12.00	Miscellaneous goods and services	1.098.400	1.270.549	1.460.990	1.696.022	1.704.623	1.771.017
	Net purchases abroad (minus)	746.700	725.800	833.000	745.200	679.600	629.000
Households final consumption expenditure - national concept		16.515.383	18.063.983	19.911.556	22.468.038	21.630.506	21.827.996

4.2 HOUSEHOLDS FINAL CONSUMPTION EXPENDITURE, AT CURRENT PRICES, STRUCTURE

							%
Code	C O I C O P	2005	2006	2007	2008	2009	2010
01.00	Food and non-alcoholic beverages	32,98	32,94	32,98	33,54	34,12	32,92
02.00	Alcoholic beverages, tobacco and narcotics	6,57	6,44	5,96	5,49	5,96	6,26
03.00	Clothing and footwear	5,98	4,94	4,98	4,82	4,73	4,86
04.00	Housing, water, electricity, gas and other fuels	15,41	15,24	14,31	13,72	14,40	14,52
05.00	Furnishing, household equipment and routine household maintenance	7,45	7,17	7,58	7,02	6,22	6,09
06.00	Health	4,31	4,49	4,64	4,74	5,13	4,90
07.00	Transport	8,85	9,19	9,61	10,41	9,09	10,13
08.00	Communication	2,83	2,87	2,85	2,84	2,96	2,96
09.00	Recreation and culture	4,75	4,77	4,90	4,98	4,66	4,45
10.00	Education	1,14	1,24	1,31	1,31	1,39	1,39
11.00	Restaurants and hotels	7,59	7,69	7,74	6,91	6,61	6,27
12.00	Miscellaneous goods and services	6,65	7,03	7,34	7,55	7,88	8,11
	Net purchases abroad (minus)	4,52	4,02	4,18	3,32	3,14	2,88
Households final consumption expenditure - national concept		100,00	100,00	100,00	100,00	100,00	100,00

5.1 HOUSEHOLDS FINAL CONSUMPTION EXPENDITURE, AT CONSTANT PRICES
(at prices of previous year)

							000 KM
Code	C O I C O P	2005	2006	2007	2008	2009	2010
01.00	Food and non-alcoholic beverages	5.446.493	5.575.259	6.025.453	6.764.206	7.413.722	7.205.555
02.00	Alcoholic beverages, tobacco and narcotics	1.085.198	1.163.211	1.178.823	1.216.985	1.181.637	1.138.380
03.00	Clothing and footwear	988.338	895.778	1.014.663	1.104.068	1.062.872	1.108.898
04.00	Housing, water, electricity, gas and other fuels	2.545.511	2.582.926	2.813.795	2.921.733	3.010.401	3.103.351
05.00	Furnishing, household equipment and routine household maintenance	1.230.269	1.289.673	1.495.248	1.548.822	1.331.878	1.325.764
06.00	Health	712.216	751.511	918.004	1.064.475	1.101.752	1.053.797
07.00	Transport	1.460.964	1.569.435	1.817.841	2.108.032	2.192.101	2.101.359
08.00	Communication	468.090	510.789	551.845	608.744	629.812	603.307
09.00	Recreation and culture	783.910	850.284	978.923	1.099.688	988.971	973.172
10.00	Education	188.882	219.278	248.673	283.385	298.590	296.701
11.00	Restaurants and hotels	1.253.810	1.335.612	1.461.960	1.463.002	1.366.387	1.351.375
12.00	Miscellaneous goods and services	1.098.400	1.212.449	1.447.330	1.636.248	1.700.637	1.757.608
	Net purchases abroad (minus)	746.700	705.211	820.797	712.375	685.671	615.682
Households final consumption expenditure - national concept		16.515.383	17.250.995	19.131.762	21.107.011	21.593.088	21.403.585

5.2 HOUSEHOLDS FINAL CONSUMPTION EXPENDITURE, AT CONSTANT PRICES, STRUCTURE

							%
Code	C O I C O P	2005	2006	2007	2008	2009	2010
01.00	Food and non-alcoholic beverages	32,98	32,32	31,49	32,05	34,33	33,67
02.00	Alcoholic beverages, tobacco and narcotics	6,57	6,74	6,16	5,77	5,47	5,32
03.00	Clothing and footwear	5,98	5,19	5,30	5,23	4,92	5,18
04.00	Housing, water, electricity, gas and other fuels	15,41	14,97	14,71	13,84	13,94	14,50
05.00	Furnishing, household equipment and routine household maintenance	7,45	7,48	7,82	7,34	6,17	6,19
06.00	Health	4,31	4,36	4,80	5,04	5,10	4,92
07.00	Transport	8,85	9,10	9,50	9,99	10,15	9,82
08.00	Communication	2,83	2,96	2,88	2,88	2,92	2,82
09.00	Recreation and culture	4,75	4,93	5,12	5,21	4,58	4,55
10.00	Education	1,14	1,27	1,30	1,34	1,38	1,39
11.00	Restaurants and hotels	7,59	7,74	7,64	6,93	6,33	6,31
12.00	Miscellaneous goods and services	6,65	7,03	7,57	7,75	7,88	8,21
	Net purchases abroad (minus)	4,52	4,09	4,29	3,38	3,18	2,88
Households final consumption expenditure - national concept		100,00	100,00	100,00	100,00	100,00	100,00

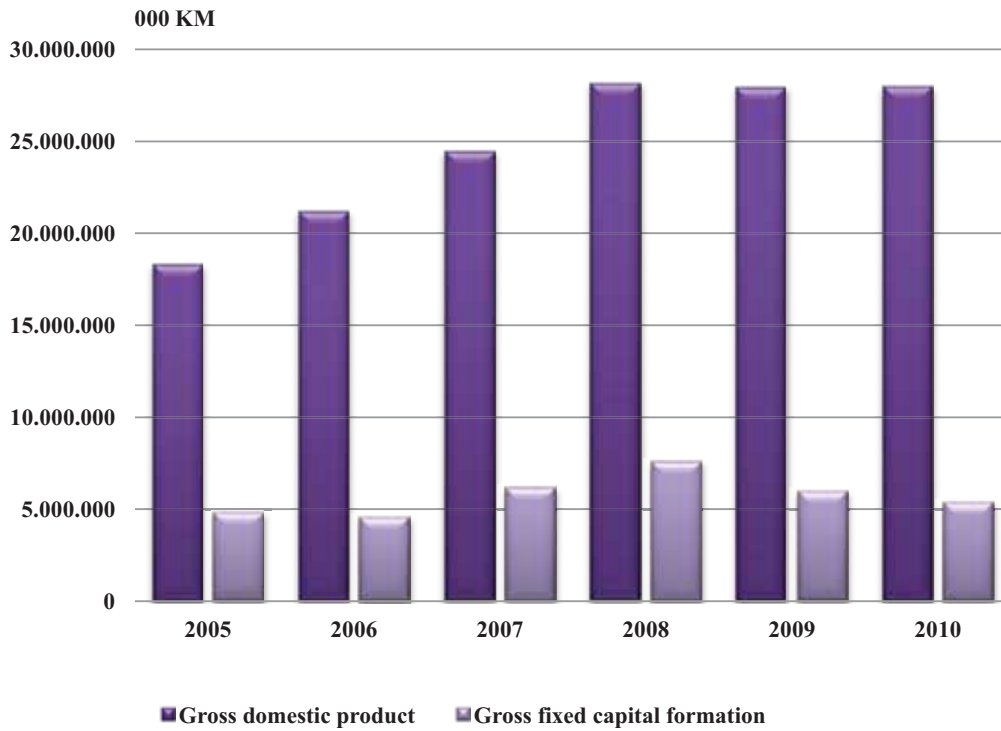
6.1 HOUSEHOLDS FINAL CONSUMPTION EXPENDITURE, NOMINAL INDICES
(previous year = 100)

Code	C O I C O P	2005	2006	2007	2008	2009	2010
01.00	Food and non-alcoholic beverages	100,00	109,24	110,39	114,75	97,92	97,38
02.00	Alcoholic beverages, tobacco and narcotics	100,00	107,21	102,03	103,84	104,55	106,08
03.00	Clothing and footwear	100,00	90,28	111,09	109,19	94,56	103,61
04.00	Housing, water, electricity, gas and other fuels	100,00	108,16	103,46	108,22	101,05	101,78
05.00	Furnishing, household equipment and routine household maintenance	100,00	105,31	116,49	104,53	85,23	98,84
06.00	Health	100,00	113,94	113,85	115,31	104,18	96,39
07.00	Transport	100,00	113,67	115,17	122,29	84,09	112,47
08.00	Communication	100,00	110,73	109,33	112,45	100,49	100,94
09.00	Recreation and culture	100,00	109,93	113,17	114,75	90,03	96,51
10.00	Education	100,00	118,93	116,07	112,61	102,29	101,00
11.00	Restaurants and hotels	100,00	110,72	111,00	100,69	92,13	95,77
12.00	Miscellaneous goods and services	100,00	115,67	114,99	116,09	100,51	103,89
	Net purchases abroad (minus)	100,00	97,20	114,77	89,46	91,20	92,55
	Households final consumption expenditure - national concept	100,00	109,38	110,23	112,84	96,27	100,91

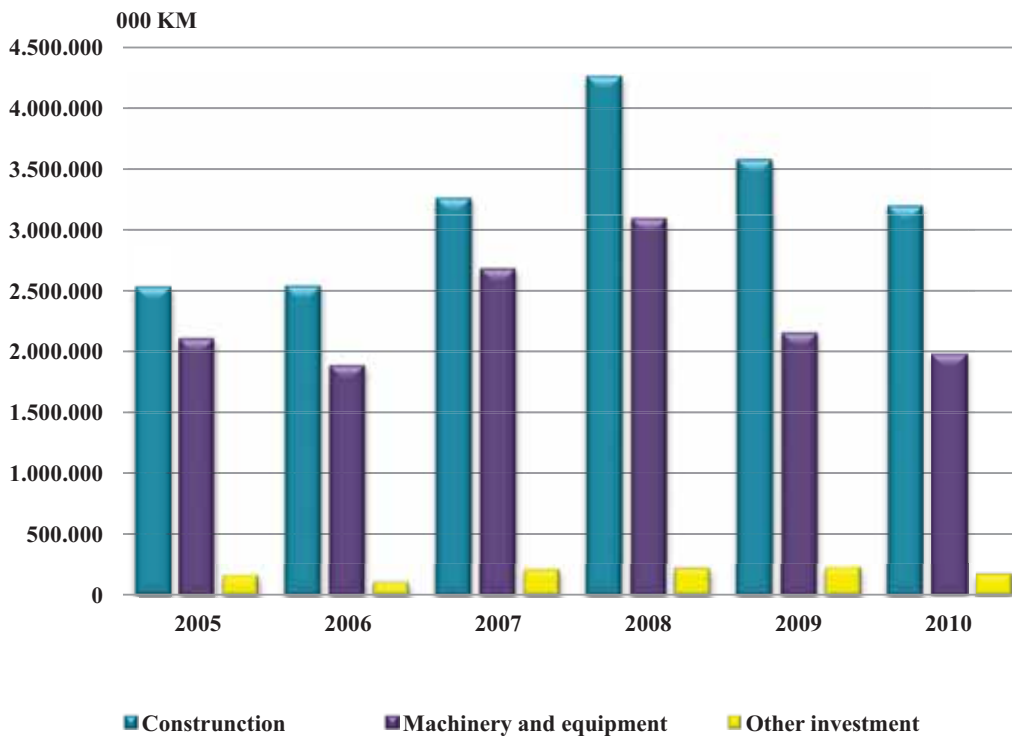
6.2 HOUSEHOLDS FINAL CONSUMPTION EXPENDITURE, REAL INDICES

Code	C O I C O P	2005	2006	2007	2008	2009	2010
01.00	Food and non-alcoholic beverages	100,00	102,36	101,27	102,99	98,37	97,64
02.00	Alcoholic beverages, tobacco and narcotics	100,00	107,19	101,32	102,52	95,86	88,33
03.00	Clothing and footwear	100,00	90,63	113,72	111,39	98,20	108,36
04.00	Housing, water, electricity, gas and other fuels	100,00	101,47	102,20	102,57	97,66	99,63
05.00	Furnishing, household equipment and routine household maintenance	100,00	104,83	115,42	102,63	84,43	98,60
06.00	Health	100,00	105,52	113,13	115,22	103,42	94,94
07.00	Transport	100,00	107,42	109,46	110,22	93,72	106,85
08.00	Communication	100,00	109,12	106,47	107,42	98,83	94,21
09.00	Recreation and culture	100,00	108,47	113,60	112,76	88,37	96,60
10.00	Education	100,00	116,09	110,70	108,69	101,70	98,79
11.00	Restaurants and hotels	100,00	106,52	105,31	94,94	88,06	94,54
12.00	Miscellaneous goods and services	100,00	110,38	113,91	112,00	100,27	103,11
	Net purchases abroad (minus)	100,00	94,44	113,09	85,52	92,01	90,59
	Households final consumption expenditure - national concept	100,00	104,45	105,91	106,00	96,11	98,95

Gross domestic product and gross fixed capital formation, current prices



Gross fixed capital formation - structure



7.1 GROSS FIXED CAPITAL FORMATION, CURRENT PRICES

	000 KM					
Purpose of investment	2005	2006	2007	2008	2009	2010
Machinery and equipment	2.108.477	1.888.648	2.681.630	3.093.452	2.154.956	1.982.420
Construction	2.524.061	2.537.749	3.259.472	4.259.350	3.575.186	3.195.920
Other investment	156.928	106.035	201.604	212.271	221.586	166.129
Gross fixed capital formation	4.789.466	4.532.432	6.142.706	7.565.073	5.951.728	5.344.469

7.2 GROSS FIXED CAPITAL FORMATION, CURRENT PRICES, STRUCTURE

	%					
Purpose of investment	2005	2006	2007	2008	2009	2010
Machinery and equipment	44,02	41,67	43,66	40,89	36,21	37,09
Construction	52,70	55,99	53,06	56,30	60,07	59,80
Other investment	3,28	2,34	3,28	2,81	3,72	3,11
Gross fixed capital formation	100,00	100,00	100,00	100,00	100,00	100,00

7.3 GROSS FIXED CAPITAL FORMATION, NOMINAL INDECES

(previous year =100)

Purpose of investment	2005	2006	2007	2008	2009	2010
Machinery and equipment	100,00	89,57	141,99	115,36	69,66	91,99
Construction	100,00	100,54	128,44	130,68	83,94	89,39
Other investment	100,00	67,57	190,13	105,29	104,39	74,97
Gross fixed capital formation	100,00	94,63	135,53	123,16	78,67	89,80

8.1 GROSS FIXED CAPITAL FORMATION, AT CONSTANT PRICES
(at prices of previous year)

	000 KM					
Purpose of investment	2005	2006	2007	2008	2009	2010
Machinery and equipment	2.108.477	1.788.493	2.540.641	3.008.610	2.082.888	1.972.807
Construction	2.524.061	2.436.883	3.070.687	3.926.791	3.566.514	3.157.822
Other investment	156.928	99.939	198.625	197.590	222.432	162.680
Gross fixed capital formation	4.789.466	4.325.315	5.809.953	7.132.991	5.871.834	5.293.309

8.2 GROSS FIXED CAPITAL FORMATION, AT CONSTANT PRICES, STRUCTURE

	%					
Purpose of investment	2005	2006	2007	2008	2009	2010
Machinery and equipment	44,02	41,35	43,73	42,18	35,47	37,27
Construction	52,70	56,34	52,85	55,05	60,74	59,66
Other investment	3,28	2,31	3,42	2,77	3,79	3,07
Gross fixed capital formation	100,00	100,00	100,00	100,00	100,00	100,00

8.3 GROSS FIXED CAPITAL FORMATION, REAL INDICES

Purpose of investment	2005	2006	2007	2008	2009	2010
Machinery and equipment	100,00	84,82	134,52	112,19	67,33	91,55
Construction	100,00	96,55	121,00	120,47	83,73	88,33
Other investment	100,00	63,68	187,32	98,01	104,79	73,42
Gross fixed capital formation	100,00	90,31	128,19	116,12	77,62	88,94