



FIRST RELEASE



You are required to specify a data source when allowed in your product or application.

YEAR IX

SARAJEVO, 25/02/2021

NUMBER 4

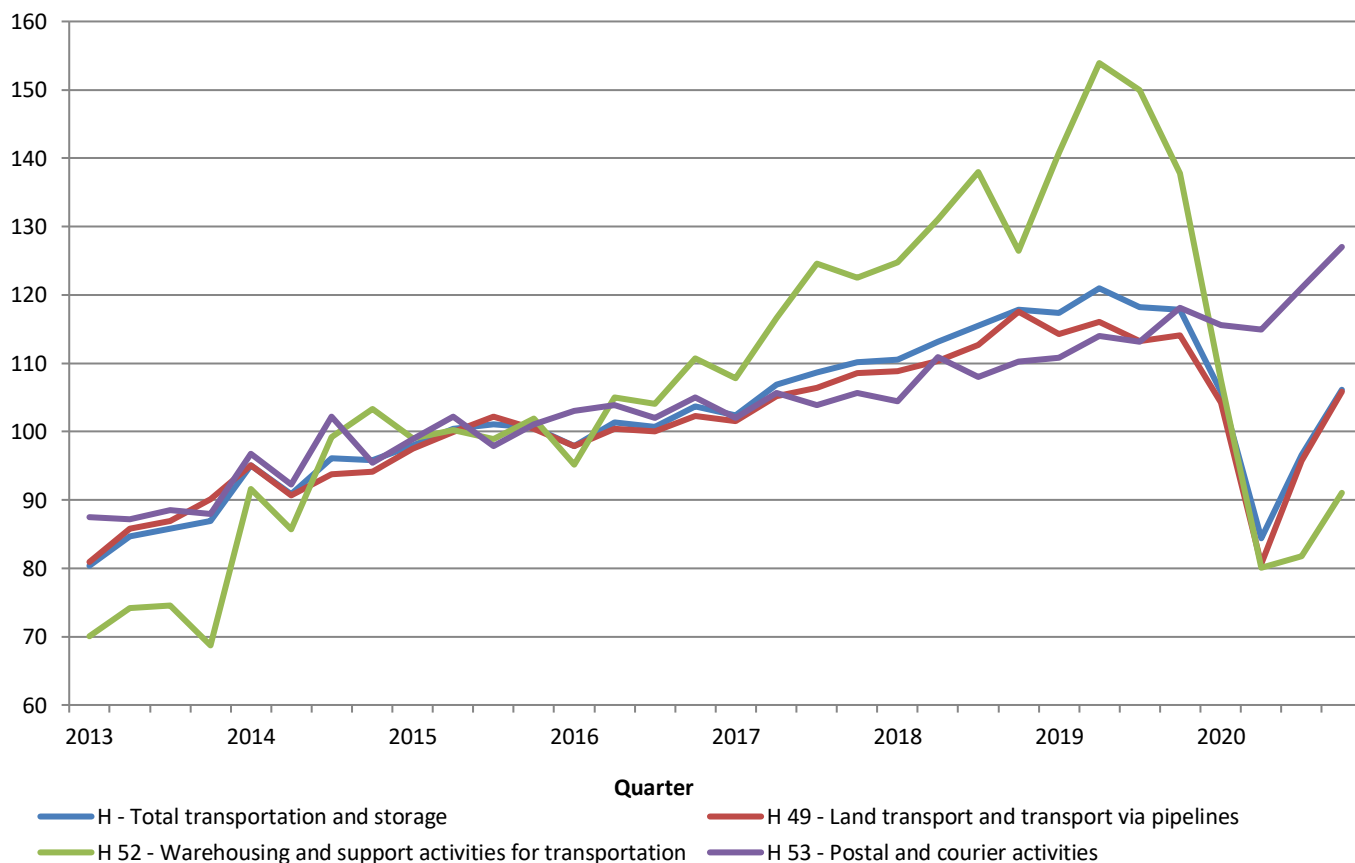
BUSINESS STATISTICS

TRANSPORTATION AND STORAGE TURNOVER INDICES IN BIH, IV QUARTER 2020.

Total seasonally adjusted transportation and storage turnover in BiH in the fourth quarter of 2020 increased by 9.9% compared with the third quarter 2020. The increase in turnover was recorded in divisions of Land transport and transport via pipelines by 10.6%, Warehousing and support activities for transportation by 11.4%, and Postal and courier activities by 4.9%.

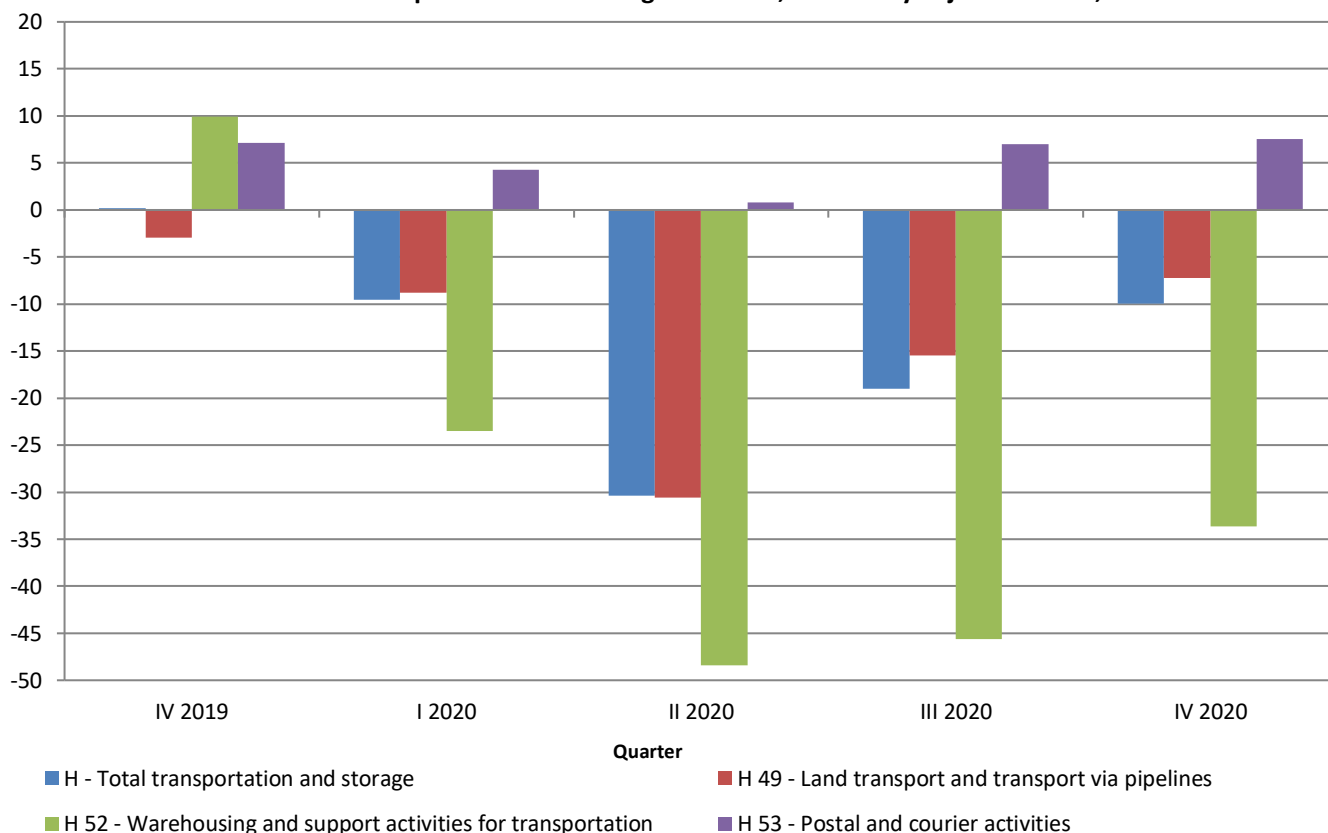
Total seasonally adjusted transportation and storage index in the fourth quarter of 2020 recorded a increase of 6.1% compared with the base year (2015). The increase of the turnover index was realized in the areas of postal and courier activities of 27.0% and land transport and pipeline transport of 5.9%, while in the area of warehousing and support activities in transport there was a decrease in turnover of 8.9% compared to on the base (2015) year.

Indices of transportation and storage turnover, seasonally adjusted series, BiH



The total transportation and storage turnover, working days adjusted data, in the fourth quarter of 2020 recorded a decrease of 9.9% compared to the same quarter of the previous year. The turnover increased in the Postal and courier activities by 7.6%, while the decrease in turnover was recorded in the Warehousing and support activities for transportation by 33.6% and in the Land transport and transport via pipelines by 7.2%.

Indices of transportation and storage turnover, seasonally adjusted series, BiH



In the structure of total transportation and storage turnover (gross, non-adjusted data) in the fourth quarter of 2020 the greatest share is realized in the Land transport and transport via pipelines (73.9%), followed by Postal and courier activities (13.6%), Warehousing and support activities for transportation (12.3%) and Air transport (0.2%).

Table 1: Transportation and storage turnover indices - gross (non-adjusted) series

Code KD BiH 2010	Activity- KD BiH 2010	growth rates			turnover indices 2015=100				
		IV 2020	IV 2020	IV 2020	IV 2019	I 2020	II 2020	III 2020	IV 2020
		III 2020	IV 2019	Ø2019	IV 2019	I 2020	II 2020	III 2020	IV 2020
H	Total transportation and storage	9.7	-9.9	-7.5	121.8	96.7	85.1	99.97	109.7
H 49	Land transport and transport via pipelines	9.9	-7.2	-4.8	117.2	95.0	82.5	99.0	108.8
H50	Water transport	-	-	-	-	-	-	-	-
H 51	Air transport	Z	Z	Z	Z	Z	Z	Z	Z
H 52	Warehousing and support activities for transportation	5.1	-33.6	-33.9	145.3	90.8	77.7	91.7	96.5
H 53	Postal and courier activities	13.0	7.6	16.5	123.6	116.5	111.9	117.6	132.9

**data for previous period are revised*

Table 2: Quarterly growth rates of other transportation and storage turnover calculated from value indices

Code KD BiH 2010	Activity- KD BiH 2010	IV 2019	I 2020	II 2020	III 2020	IV 2020
		III 2019	IV 2019	I 2020	II 2020	III 2020
H	Total transportation and storage	-0.3	-10.2	-20.2	14.4	9.9
H 49	Land transport and transport via pipelines	0.8	-8.6	-22.6	18.7	10.6
H50	Water transportation	-	-	-	-	-
H 51	Air transport	Z	Z	Z	Z	Z
H 52	Warehousing and support activities for transportation	-8.1	-22.0	-25.5	2.1	11.4
H 53	Postal and courier activities	4.4	-2.1	-0.5	5.3	4.9

**data for previous period are revised*

**podaci za prethodni period su revidirani*

Table 3: Annual growth rates of other transportation and storage turnover calculated from value indices

Code KD BiH 2010	Activity- KD BiH 2010	I 2020	II 2020	III 2020	IV 2020	I-IV 2020
		I 2019	II 2019	III 2019	IV 2019	I-IV 2019
H	Total transportation and storage	-9.5	-30.3	-19.0	-9.9	-17.5
H 49	Land transport and transport via pipelines	-8.8	-30.6	-15.5	-7.2	-15.8
H50	Water transportation	-	-	-	-	-
H 51	Air transport	Z	Z	Z	Z	Z
H 52	Warehousing and support activities for transportation	-23.5	-48.4	-45.6	-33.6	-38.9
H 53	Postal and courier activities	4.3	0.8	7.0	7.6	5.0

**working day adjusted data*

**data for previous period are revised*

Table 4: Quarterly value indices of transportation and storage turnover, 2015=100

Code KD BiH 2010	Activity- KD BiH 2010	2019	2020			
		IV	I	II	III	IV
H	Total transportation and storage	117.8	105.8	84.4	96.5	106.1
H 49	Land transport and transport via pipelines	114.1	104.2	80.6	95.7	105.9
H50	Water transportation	-	-	-	-	-
H 51	Air transport	Z	Z	Z	Z	Z
H 52	Warehousing and support activities for transportation	137.8	107.5	80.1	81.8	91.1
H 53	Postal and courier activities	118.1	115.6	115.0	121.0	127.0

**seasonally adjusted data*

**data for previous period are revised*

Appendix: Extract from Classification of Activities KD BiH 2010

Code KD BiH 2010	Activity- KD BiH 2010
H	TRANSPORTATION AND STORAGE
49	Land transport and transport via pipelines
49.1	Passenger rail transport, interurban
49.2	Freight rail transport
49.3	Other passenger land transport
49.4	Freight transport by road and removal services
49.5	Transport via pipeline
50	Water transport
50.1	Sea and coastal passenger water transport
50.2	Sea and coastal freight water transport
50.3	Inland passenger water transport
50.4	Inland freight water transport
51	Air transport
51.1	Passenger air transport
51.2	Freight air transport
52	Warehousing and support activities for transportation
52.1	Warehousing and storage
52.2	Support activities for transportation
53	Postal and courier activities
53.1	Postal activities under universal service obligation
53.2	Other postal and courier activities

METHODOLOGY NOTES

Aim of survey

Primary goal of transportation and storage turnover statistics is to provide timely information on change of level of realized turnover and other relevant indicators. Transportation and storage turnover index is one of the indicators of economic activity in the country, which helps government bodies, and private sector enterprises in the decision-making process. It is also applied for the estimation of service sector output, household consumption, as well as in the calculation of national accounts. Survey methodology is completely harmonized with the one prescribed by Council Regulation (EC) No.1165/98 concerning short-term statistics from the 1998 (Annex D) and its amendments (hereinafter EU STS regulation) and with Eurostat recommendations for this statistical area.

Coverage

The survey comprises business entities/legal units, which are, by the main activity, registered within transportation and storage activities (section H). For the purpose of the survey, Classification of Activities in Bosnia and Herzegovina - KD BiH 2010 was used, and it is fully compliant with the European Classification of Economic Activities - NACE Rev. 2. Survey covers the entire territory of Bosnia and Herzegovina. Entrepreneurs are not included.

Sample design

In conducting survey on transportation and storage turnover in BiH the combined method of full coverage and stratified random sampling is used. The sample is divided into strata according to class of financial data (financial report of the previous year) and the activity of business entity (49, 50, 51, 52, 53). As an additional stratification variable, the number of employees is used. The chosen sample for transportation and storage in 2020 is representative at the level of Bosnia and Herzegovina and at the level of the Federation of BiH, Republic of Srpska and District Brčko.

Data collection and processing

In conducting the survey, the three statistical institutions in BiH participate. The main observation variable is quarterly turnover of business entity, excluding VAT, which is in accordance with EU-STS regulation separately stated. Data collected from the reporting units, using the forms K KPS TRANS 01 (divisions 49, 50, 51, 52) and K KPS USL 01 (for division H53 Postal Activities) are the basis for the evaluation data for the total population. Aggregation of turnover at higher levels (division, section or special aggregates) of activity is carried out prior to the compilation of indices.

Series of quarterly turnover data for division H53, from 2010 to 2013, are obtained by the combination of data from administrative sources and other statistical surveys. In the recalculation of historical series of data, overlapping method was used. In parallel with regular quarterly survey on transportation and storage turnover, conducted from 2015, data for reference quarters of 2014 are collected for division H53.

Index compilation

The transport and storage turnover index in BiH is expressed in nominal values and is calculated in relation to the new base (2015) year, which is applied in the calculation of the index from the first quarter of 2018. EU Regulation (EC) No. 472/2008 prescribes the application of the base year from January 2018 in EU member states. The turnover index is expressed in current prices (the impact of price changes has not been eliminated).

Seasonal and working day adjustment of index

Statistical institutions in BiH, taking into account data dissemination in the EU, are publishing indices in the following forms:

- original (unadjusted) indices,
- seasonally adjusted indices – deseasoned indices (SA – seasonally adjusted) and
- calendar adjusted indices (WDA- working-day adjusted)

Since the seasonally and calendar adjusted indices are far more significant and representative for the users of statistical data, they are listed in tabular form.

Seasonal adjustment means that the data are adjusted for seasonal influences and calendar days. Quarterly indices and growth rates are, according to Eurostat's recommendations, presented and interpreted in seasonally adjusted form. Calendar adjustment implies that the data are adjusted for the impact of calendar and workdays. The data that are compared with the data from the same period of the previous year are presented and interpreted in the calendar-adjusted form of an index or growth rate. When these calendar effects significantly affect the observed time series, it is necessary to remove them.

Calendar and seasonal adjustments are performed in the JDemetra + application (version 2.2.1) using the TRAMO-SEATS method on the original quarterly data series in accordance with Eurostat guidelines. Due to the nature of the applied adjustment method, adding new observations may result in certain changes to an earlier series of already published seasonally and calendar-adjusted indices.

Data dissemination

Results of the survey are expressed in the form of indices and growth rates and since 2012 are published on a regular quarterly basis in the form of press releases on the website of the Agency for Statistics of BiH (www.bhas.ba). In the period from 2012 to 2017 results of the survey were published without division H53. In addition, in that period, seasonal and working day adjustment was not done. Since the first quarter of 2017 results of the survey are seasonally and calendar-adjusted and include division H53. The presentation and interpretation of the index is completely in line with those prescribed by EU-STS regulation allowing national and international users to compare the BiH transportation and storage index with indices of other countries.

Data revision

Regular press releases on transportation and storage turnover indices are published in the quarterly dynamics and contain preliminary data. Data revision implies that the data for the previous quarter (t-1) are revised in accordance with new information, and it is possible that the data published after revision differ from previously published, preliminary data. In the press release is clearly stated on which data are used so that users of statistical data can properly interpret them. For any change of the data and the reasons for doing that, users will be informed in an appropriate and transparent manner, in regular quarterly press releases and other publications for the public as well as on the website of the Agency for Statistics of BiH.

Definitions

Turnover is the total invoiced amount that a business entity invoice to third parties for goods sold or service provided during the reference period, and it corresponds to the market value. Includes costs associated with the sale, transferred to the customer, even if these amounts are stated separately on invoices. Value Added Tax (VAT) is excluded from the turnover, as well as other similar deductible taxes directly linked to turnover as well as all duties and taxes on the goods or services invoiced by the unit. Reduction in prices, rebates and discounts must be deducted. Price reductions, rebates and bonuses conceded later to clients, for example at the end of the year, are not taken into account. Income classified as other operating income, financial income and extraordinary income in company accounts is excluded from turnover.

Abbreviations

EU- European Union

Eurostat- Statistical Office of the European Communities

KD BiH 2010- Classification of activities of Bosnia and Herzegovina 2010

NACE Rev.2- European Classification of economic Activities

SBR- Statistical Business Register

STS – Short Term Business Statistics

z- data are not published due to confidentiality reasons

- no occurrence

Published by the Agency for Statistics of the Bosnia and Herzegovina, 71000 Sarajevo, Zelenih beretki 26

Phone: +387 (33) 911 911 | Telefax: +387 (33) 220 622

E-mail: bhas@bhas.gov.ba | Web site: www.bhas.gov.ba

Responsible persons:

Velimir Jukić, Assistant Director of Business Statistics

Vesna Čužić, Acting Director

Prepared by: Alen Bajramović



Please consider the environment before printing this document.