



SAOPĆENJE

FIRST RELEASE



Obavezni ste da prilikom dozvoljenih radnji, u svom proizvodu ili aplikaciji navedete izvor podataka.
You are required to specify a data source when allowed in your product or application.

GODINA/YEAR VIII

SARAJEVO, 30.10.2024.

BROJ/NUMBER 9

POSLOVNE STATISTIKE

BUSINESS STATISTICS

INDEKS PROMETA INDUSTRIJE, SEPTEMBAR 2024., PRVI REZULTATI¹

INDUSTRIAL TURNOVER INDEX, SEPTEMBER 2024, FIRST RESULTS

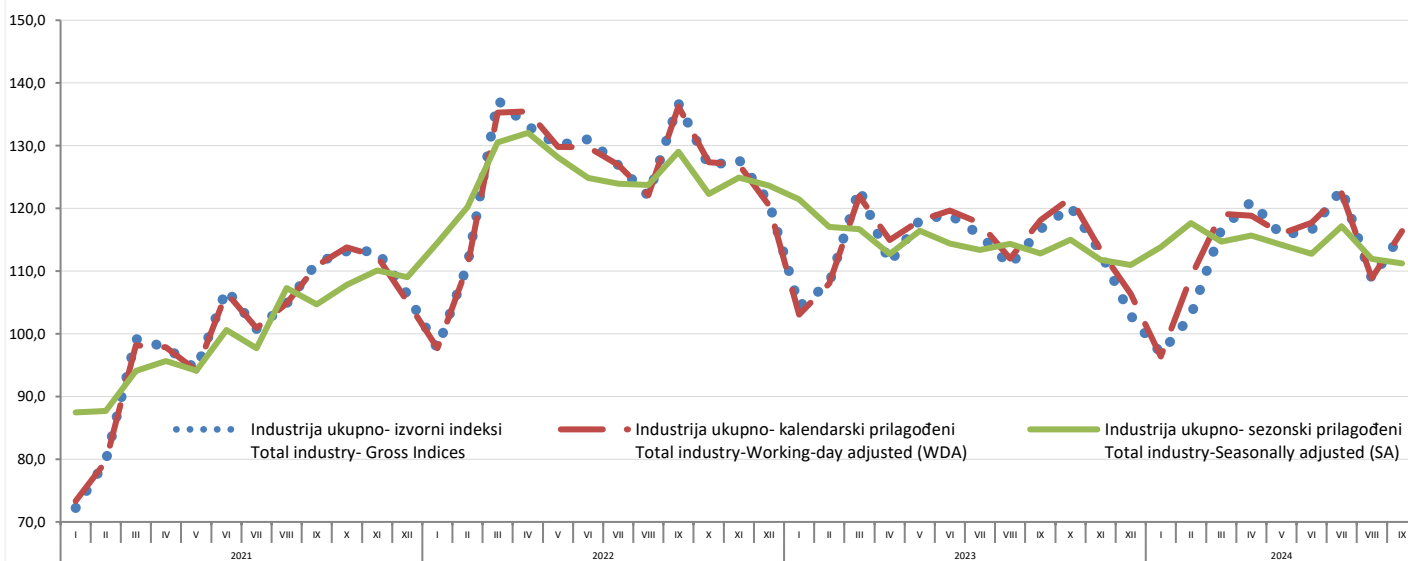
Ukupan² desezonirani promet industrije u Bosni i Hercegovini u septembru 2024. u poređenju sa augustom 2024. ostvario je pad od 0,6%. Ako uporedimo tržišta, u istom periodu na domaćem tržištu zabilježen je pad za 2,2% i na stranom tržištu zabilježen je rast od 0,9%.

The total² seasonally adjusted industrial turnover in the Bosnia and Herzegovina, in September 2024, as compared to August 2024, decreased by 0.6%. If compared by markets, then, in the same period, it decreased by 2.2% on the domestic market and increased by 0.9% on the non-domestic market.

U septembru 2024. u poređenju sa septembrom 2023. ukupan promet industrije, kalendarski prilagođen, u Bosni i Hercegovini bilježi pad za 1,4%. Ako uporedimo tržišta, u istom periodu na domaćem tržištu zabilježen je pad za 0,8% i na stranom tržištu pad za 2,1%.

In September 2024, as compared to September 2023, the total industrial turnover in the Bosnia and Herzegovina, working-day adjusted, decreased by 1.4%. If compared by markets, then, in the same period, it decreased by 0.8% on the domestic market and decreased by 2.1% on the non-domestic market.

Grafik 1. Vremenska serija industrija ukupno - izvorni, kalendarski i sezonski prilagođeni indeksi: septembar 2021 - septembar 2024 (2021=100)
Graph 1. Time series for total industry - Gross, Working-day and Seasonally Adjusted indices: September 2021 - September 2024 (2021=100)



¹ Prethodni rezultati postaju konačni danom objavljivanja saopćenja za naredni mjesec.
Preliminary results become final as of publishing press release for the next month.

² Indeks za Ukupni promet industrije je kompozitni indeks koji se izvodi iz indeksa prometa industrije ostvarenog na domaćem i stranom tržištu i njihovog učešća (strukture) u ukupnom prometu industrije u baznom periodu.
Total industrial turnover index is composite index derived from industrial turnover index on domestic and non-domestic market and their share (structure) in total industrial turnover in the base period.

MJESEČNO POREĐENJE PREMA GIG-u³
PROMET INDUSTRIJE (Desezonirani indeksi)

U septembru 2024. u poređenju sa augustom 2024. ukupan promet Energije veći je za 7,3%, promet Trajnih proizvoda za široku potrošnju veći je za 1,4%, promet Intermedijarnih proizvoda veći je za 0,8%, dok je promet Kapitalnih proizvoda manji je za 3,8%, i promet Netrajnih proizvoda za široku potrošnju manji je za 1,7%.

GODIŠNJE POREĐENJE NA NIVOU GIG-a 2009.
PROMET INDUSTRIJE (kalendarski prilagođeni indeksi)

U septembru 2024. u poređenju sa septembrom 2023. ukupan promet Netrajnih proizvoda za široku potrošnju veći je za 2,6%, dok je promet Intermedijarnih proizvoda manji je za 0,4%, promet Energije manji je za 1,8%, promet Kapitalnih proizvoda manji je za 8,5%, promet Trajnih proizvoda za široku potrošnju manji je za 9,5%.

MONTHLY COMPARISON, ACCORDING TO MIGs³
INDUSTRIAL TURNOVER (Seasonally adjusted indices)

In September 2024, as compared to August 2024, the total turnover of Energy increased by 7.3%, turnover of Consumer durables increased by 1.4%, turnover of Intermediate goods increased by 0.8%, while turnover of Capital goods decreased by 3.8%, and turnover of Consumer non-durables decreased by 1.7%.

ANNUAL COMPARISON, ACCORDING TO MIGs 2009.
INDUSTRIAL TURNOVER (working-day adjusted indices)

In September 2024, as compared to September 2023, the total turnover of Consumer non-durables increased by 2.6%, while turnover of Intermediate goods decreased by 0.4%, turnover of Energy decreased by 1.8%, turnover of Capital goods decreased by 8.5%, turnover of Consumer durables decreased by 9.5%.

1.1. PROMET INDUSTRIJE – MJESEČNE STOPE PROMJENA IZRAČUNATE IZ DESEZONIRANIH INDEKSA, SEPTEMBAR 2024.

INDUSTRIAL TURNOVER – MONTH-ON-MONTH GROWTH RATES CALCULATED ON BASIS OF SEASONALLY ADJUSTED INDICES, SEPTEMBER 2024

	IV 2024. III 2024.	V 2024. IV 2024.	VI 2024. V 2024.	VII 2024. VI 2024.	VIII 2024. VII 2024.	IX 2024. VIII 2024.	
Ukupno industrija	0.9	-1.3	-1.2	3.9	-4.4	-0.6	Total industry
Prema GIG-u 2009.							According to MIGs 2009,
AI Intermedijarni proizvodi	2.3	-1.3	-2.1	3.2	-3.7	0.8	AI Intermediate goods
AE Energija	-10.2	6.1	9.5	6.7	-23.7	7.3	AE Energy
BB Kapitalni proizvodi	2.5	-6.9	3.5	6.1	-4.5	-3.8	BB Capital goods
CD Trajni proizvodi za široku potrošnju	1.6	-4.0	-2.1	-1.0	-1.3	1.4	CD Consumer durables
CN Netrajni proizvodi za široku potrošnju	-0.9	1.0	-3.2	1.5	-0.3	-1.7	CN Consumer non-durables
Prema tržištima							According to markets
Prodaja na domaćem tržištu - Ukupno	3.5	-1.5	0.9	2.5	-4.0	-2.2	Domestic industrial turnover – Total
Prodaja na stranom tržištu - Ukupno	-1.6	-1.1	-3.2	5.2	-4.9	0.9	Non-domestic industrial turnover – Total

1.2. PROMET INDUSTRIJE – GODIŠNJE STOPE PROMJENA IZRAČUNATE IZ KALENDARSKI PRILAGOĐENIH INDEKSA, SEPTEMBAR 2024.

INDUSTRIAL TURNOVER – YEAR-ON-YEAR GROW RATES CALCULATED ON BASIS OF WORKING-DAY ADJUSTED INDICES, SEPTEMBER 2024

	<u>IV 2024.</u> IV 2023.	<u>V 2024.</u> V 2023.	<u>VI 2024.</u> VI 2023.	<u>VII 2024.</u> VII 2023.	<u>VIII 2024.</u> VIII 2023.	<u>IX 2024.</u> IX 2023.	<u>I - IX 2024.</u> I - IX 2023.	
Ukupno industrija	3.4	-1.8	-1.6	4.0	-2.8	-1.4	-0.8	Total industry
								According to MIGs 2009,
Prema GIG-u 2009,								
AI Intermedijarni proizvodi	4.9	-1.8	-1.9	1.8	-3.4	-0.4	-2.5	AI Intermediate goods
AE Energija	-31.9	-14.0	-7.2	19.0	-20.2	-1.8	-20.1	AE Energy
BB Kapitalni proizvodi	5.1	-12.7	-1.3	4.2	0.2	-8.5	0.3	BB Capital goods
CD Trajni proizvodi za široku potrošnju	-9.0	-14.5	-13.8	-10.7	-10.6	-9.5	-11.0	CD Consumer durables
CN Netrajni proizvodi za široku potrošnju	6.5	9.3	4.4	3.9	2.7	2.6	6.9	CN Consumer non-durables
								According to markets
Prema tržištima								
Prodaja na domaćem tržištu - Ukupno	7.5	1.5	0.3	5.0	-2.6	-0.8	1.6	Domestic industrial turnover - Total
Prodaja na stranom tržištu - Ukupno	-0.4	-4.7	-3.4	3.0	-2.9	-2.1	-2.9	Non-domestic industrial turnover - Total

³ Glavne industrijske grupe (GIG) / Main Industrial Groupings (MIGs)

1.3. PROMET INDUSTRIJE – IZVORNI (NEPRILAGOĐENI) INDEKSI UKUPNO I PREMA GIG-u, SEPTEMBAR 2024.

INDUSTRIAL TURNOVER – GROSS (UNADJUSTED) INDICES, TOTAL AND ACCORDING TO MIGs, SEPTEMBER 2024

	Struktura Structure	<u>IX 2024.</u> Ø 2023	<u>IX 2024.</u> IX 2023.	<u>I - IX 2024.</u> I - IX 2023.	
Ukupno industrija	100.00	101.5	98.8	98.9	Total industry
					According to MIGs 2009,
Prema GIG-u 2009,					
AI Intermedijarni proizvodi	50.6	103.4	100.0	97.6	AI Intermediate goods
AE Energija	6.6	87.1	95.3	85.4	AE Energy
BB Kapitalni proizvodi	12.9	98.2	91.4	99.6	BB Capital goods
CD Trajni proizvodi za široku potrošnju	4.8	88.8	90.8	89.5	CD Consumer durables
CN Netrajni proizvodi za široku potrošnju	25.1	104.9	102.5	106.5	CN Consumer non-durables
					According to markets
Prema tržištima					
Prodaja na domaćem tržište - UKUPNO	43.3	102.2	99.6	101.4	Domestic industrial turnover - TOTAL
Prodaja na strano tržište - UKUPNO	56,7	100.8	98.0	97.0	Non-domestic industrial turnover - TOTAL

METODOLOŠKA OBJAŠNENJA

Agencija za statistiku BiH u ovom saopćenju objavljuje indeks prometa industrije, prikazan na međumjesečnoj i međugodišnjoj lančanoj osnovi, Indeksi su izračunati na baznu godinu 2021. = 100 u skladu s Uredbom Vijeća EU-a br. 2019/2152 i Implementirajućim aktom br. 2020/1197 za kratkoročne poslovne statistike (Short-Term Business Statistics). Spomenutim uredbama EU-a propisana je obavezna primjena nove bazne godine 2021. za sve države članice pri objavljivanju i diseminaciji indeksa prometa industrije od izvještajnog mjeseca januara 2024.

Kratkoročni poslovni pokazatelj - indeks prometa industrije može se koristiti kao pokazatelji razvoja tržišta industrijskih proizvoda i usluga proizvedenih i prodatih unutar industrije.

Indeksima prometa industrije **na domaćem tržištu** mjeri se mjesečno kretanje industrijskog prometa/prodaje koji su ostvarila industrijska preduzeća/industrijske lokalne jedinice na teritoriju BiH, dok se indeksima prometa industrije **na stranom tržištu** mjeri kretanje industrijskog prometa/prodaje koji su ostvarila industrijska preduzeća/industrijske lokalne jedinice na stranom tržištu, tj, izvan teritorija BiH.

Agencija za statistiku BiH i entitetski zavodi za statistiku su uskladili prezentaciju i interpretaciju indeksa prometa industrije s onom koja je propisana EU uredbama o kratkoročnim poslovnim statistikama i preporukama Eurostata o publikovanju indeksa prometa industrije.

Stoga su svi rezultati indeksa prometa industrije (industrija ukupno, agregati po industrijskim djelatnostima i specijalni GIG agregati) u saopćenju tabelarno prezentovani u tri oblika: desezonirani pokazatelji, kalendarski prilagođeni pokazatelji i Izvorni indeksi prometa industrije.

Pravna i metodološka osnova

Mjesečno istraživanje industrije (M KPS IND - 1) sadrži tabelu u kojoj se bilježi promet na nivou izvještajne jedinice. Provodi se u entitetima i Brčko distriktu na osnovu Zakona o statistici BiH (Sl, Glasnik BiH br. 26/04 i 42/04), entitetskih zakona o statistici te Godišnjih planova rada sve tri statističke institucije u BiH.

Koncepti i definicije koji se primjenjuju u istraživanju M KPS IND-1 usklađeni su s konceptima i definicijama iz Priručnika EBS za kratkoročne poslovne statistike EU-a (EBS Manual, 2021.) i u skladu s Uredbom Vijeća EU-a br. 2019/2152 te Implementirajućim aktom br. 2020/1197 za kratkoročne poslovne statistike (Short-Term Business Statistics) o definicijama varijabla, popisu varijabla i učestalosti prikupljanja podataka.

NOTES ON METHODOLOGY

The Agency for statistics of BiH is issuing the industrial turnover index presented on a month-on-month and interannual chain basis, Indices are calculated on the base year 2021=100 in accordance with the EU Regulation no, 2019/2152 and Implementing Act no, 2020/1197 for short-term business statistics (STBS).

These EU regulations prescribe the implementation of the new base year 2021, which has been mandatory for all Member States in publishing and disseminating industrial turnover index since the reference month January 2024.

Short-term business indicators on industrial turnover index can be used to show the monthly market evolution of the products and services produced and sold within industry.

*Industrial turnover indices on **domestic market** serve to measure monthly movements in industrial turnover/production sold realised by industrial enterprises/industrial local units on the territory of the BiH, while industrial turnover indices on **non-domestic market** serve to measure monthly movements in turnover/production sold realised by industrial enterprises/industrial local units on the non-domestic market, that is, outside the territory of the BiH.*

Agency for Statistics of BiH and entity institutes for statistics harmonized the presentation and interpretation of the industrial turnover index to EU Regulations on Short-Term Statistics and Eurostat's Recommendations on publishing the industrial production index.

Therefore, all the results of the industrial turnover index (total industry, aggregates by industrial activities and special MIG aggregates) are presented in a press release tables in three forms: Seasonally adjusted indicators, Working-day adjusted indicators and Original (gross) turnover indices.

Legal and methodological framework

The Monthly Industrial Survey (IND-1/KPS/M form) comprises the table where data on turnover are recorded on reporting unit level. The survey has been conducted in the entities and Brcko District on the basis of the Law on statistics of Bosnia and Herzegovina (Official Gazette of BiH No, 26/04 and 42/04), statistical laws of the entities and annual Work plans of all three statistical institutions in Bosnia and Herzegovina.

Concepts and definitions used in the M KPS IND-1 Survey are harmonised with the concepts and definitions from the EBS Manual for Short-Term Business Statistics (EBS Manual, 2021) as well as in accordance with the EU Regulation no, 2019/2152 and Implementing Act no, 2020/1197 for short-term business statistics (STBS) on definitions of variables, list of variables and frequency of data compilation.

Za prikupljanje podataka, izračunavanje i objavljivanje indeksa industrijskog prometa koristi se Klasifikacija djelatnosti BiH 2010 (KD BiH 2010) koja je bazirana na EU NACE Rev.2.

Pokrivenost i obuhvat

Mjesečnim istraživanjem M KPS IND-1 obuhvaćena su sva preduzeća i njihovi dijelovi s 20 i više zaposlenih osoba koji se bave jednom ili više industrijskih djelatnosti prema definiciji pokrivenosti djelatnosti prema KD BiH 2010.

Indeks prometa industrije pokriva samo dva industrijska područja djelatnosti prema KD BiH 2010 i to područja B – Vađenje ruda i kamena i C - Prerađivačka industrija te njihove oblasti 05 – 33.

Prikupljanje podataka

Federalni zavod za statistiku FBiH (FZS FBiH), Republički zavod za statistiku RS (RZS RS) i Ekspozitura Agencije za statistiku BiH u Brčko distriktu (EBD) provode mjesečno istraživanje industrije na područjima njihove odgovornosti koristeći zajednički upitnik (M KPS IND-1) i usaglašeno uputstvo za popunjavanje. Statističke institucije vrše ulaznu kontrolu i editovanje ulaznih podataka koje koriste za računanje indeksa i dostavljaju podatke Agenciji. Agencija izračunava i objavljuje indekse za nivo BiH i za Brčko distrikt.

Rok dostavljanja prvih (preliminarnih) podataka Agenciji od strane entitetskih zavoda za statistiku i Ekspoziture Brčko distrikt je 25. u tekućem mjesecu za prethodni (referentni) mjesec. Rok za objavu preliminarnih rezultata je 30. u tekućem mjesecu za prethodni (referentni) mjesec. Prethodni rezultati postaju konačni danom objavljivanja saopćenja za naredni mjesec.

Izveštajni period

Izveštajni period je mjesec dana i poklapa se s kalendarskim mjesecom. Metoda prikupljanja podataka je papirni upitnik koji se dostavlja izvještajnim jedinicama putem pošte.

Definicije varijabli

Indeksi prometa industrije jesu lančani indeksi izračunani iz vrijednosnih podataka o prometu/prodaji industrije na nivou glavne djelatnosti industrijskih izvještajnih jedinica koju su utvrdili entiteti i Ekspozitura BD, Indeksi su izračunati iz agregiranih podataka o vrijednosti prometa/prodaje industrije u izvještajnome mjesecu.

Vrijednost prometa je fakturisana vrijednost koju je ostvarila izvještajna jedinica/lokalna jedinica po osnovu prodaje proizvedenih dobara i usluga u izvještajnom mjesecu i podudara se s tržišnom vrijednosti prodatih dobara i usluga isporučenih trećim licima na domaćem i stranom tržištu. Vrijednost uključuje sve druge troškove (transporta i pakovanja, itd,) te sve poreze na fakturisana dobra i usluge izvještajne jedinice, osim poreza na dodanu vrijednost (PDV-a), Isključeni su svi popusti i sniženja cijena te vrijednost vraćenih pakovanih proizvoda, osim gotovinskih popusta.

For data collecting, calculating and publishing the industrial turnover index, Classification Activities of BiH 2010 (KD BiH 2010) has been used (KD BiH 2010) which is based on EU NACE Rev.2.

Scope and coverage

The Monthly survey M KPS IND-1 covers enterprises and parts thereof employing 20 or more persons employed and performing one or several industrial activities by definitions of activity coverage of the KD BiH 2010.

Industrial turnover index covers only two industrial sections of the KD BiH 2010, that is, sections B - Mining and quarrying and C - Manufacturing, and their divisions 05 – 33.

Data collection

Institute for Statistics of Federation of BiH (FZS FBiH), Republika Srpska Institute for Statistics (RZS RS) and the Agency for Statistics of BiH Branch office in Brcko District (EBD) conduct monthly survey on industry in their competence areas using a common questionnaire (M KPS IND-1), as well as unified Instruction for filling in the questionnaire. Statistical institutes perform input control and editing of input data and use it to calculate the indices and submit data to the Agency. The Agency calculates and publishes indices for BiH and Brcko District.

The deadline for submitting the preliminary data to the Agency from the entity statistical institutions and Branch Office from Brcko District is 25th in the current month for the previous (reference) month. The deadline for publishing of preliminary results is 30th in the current month for the previous (reference) month. Preliminary results become final as of publishing press release for the next month.

Reference period

The reference period for data collection is one month and is identical to a calendar month. The data collection method used is paper questionnaire delivered to the reporting units by mail.

Definitions of variables

Industrial turnover indices are chain indices calculated according to value data of the industrial turnover/sales at the level of main activity of industrial reporting units defined by the entities and Branch Office in BD, Indices are calculated by aggregation of industrial turnover value data/sales in reporting month.

Turnover value is invoiced value realized by observation unit/local unit based on sales of produced goods and services in the reporting month and, and this corresponds to market sales of goods or services supplied to third parties on domestic and non-domestic market. Turnover also includes all other charges (transport, packaging, etc,) as well as all other taxes on goods and services invoiced by reporting units, except Value Added Tax (VAT), Reduction in prices, rebates and discounts as well as the value of returned packing are deducted, except cash discounts.

Prihodom od prodaje (prometa) proizvoda ili usluga trećim osobama koje su iz iste države, tj. rezidenti BiH, smatra se prodaja na **domaćem tržištu**. Prihodom od prodaje na **stranom tržištu** smatra se prodaja nerezidentima BiH, Utvrđuje se prema kriteriju prve destinacije proizvoda ili usluga te promjeni vlasništva (bez obzira na fizički prelazak ili neprelazak granice proizvoda ili usluga za koje je izdana faktura).

Metoda kalkulacije

Indeksi prometa industrije za različite nivoe agregiranja KD BiH 2010 izračunavaju se za indekse razreda, grana i više nivoe agregiranja ponderisanjem s učešćem u vrijednosti prometa (prodaje) industrije za utvrđene djelatnosti industrije KD BiH 2010 za svaki pojedinačni pokazatelj. Tako se izračunavaju indeksi za agregate GIG-a te indeksi za domaće i strano tržište. Ukupan indeks prometa se računa množenjem indeksa domaćeg i nedomaćeg tržišta sa njihovim pripadajućim ponderima (učešćem) prometa u ukupnoj vrijednosti prometa. Uredbom Vijeća EU-a br. 2019/2152 te Implementirajućim aktom br. 2020/1197 za kratkoročne poslovne statistike (Short-Term Business Statistics) propisana je primjena bazne 2021. godine.

Agregati glavnih industrijskih grupa (GIG-a)

Za izračunavanje indeksa za GIG agregate (EU MIGs-Regulativa br. 2019/2152 te Implementirajući akt br. 2020/1197 za kratkoročne poslovne statistike u vezi s definicijama Glavnih industrijskih grupa (GIG)) primijenjuju se nove definicije radi usklađivanja sa statističkim standardima EU. Obračunavanje agregata GIG-a za indekse prometa industrije izvršeno je grupisanjem grana ili oblasti KD BiH 2010 iz područja djelatnosti B i C (05,1 – 33,2) prema abecednim oznakama skraćenica na sljedeći način:

- AI Intermedijarni proizvodi: oblasti i grane KD BiH 2010.: 07 – 09, 10,6, 10,9, 13,1 – 13,3, 16, 17, 20,1 – 20,3, 20,5, 20,6, 22 – 24, 25,5 – 25,7, 25,9, 26,1, 26,8, 27,1 – 27,4 i 27,9
- AE Energija: KD BiH 2010 oblasti: 05, 06 i 19
- BB Kapitalni proizvodi: oblasti i grane KD BiH 2010: 25,1 – 25,4, 26,2, 26,3, 26,5, 26,6, 28, 29, 30,1 – 30,4, 32,5 i 33
- CD Trajni proizvodi za široku potrošnju: oblasti i grane KD BiH 2010: 26,4, 26,7, 27,5, 30,9, 31, 32,1 i 32,2
- CN Netrajni proizvodi za široku potrošnju: oblasti i grane KD BiH 2010: 10,1 – 10,5, 10,7, 10,8, 11, 12, 13,9, 14, 15, 18, 20,4, 21, 32,3, 32,4 i 32,9,

Struktura djelatnosti prema KD BiH 2010

Struktura industrijskih djelatnosti (struktura grana) za indeks prometa industrije BiH za prethodnu (baznu) godinu (period t-1) izračunata je iz vrijednosti prodaje (prometa) industrije prema organizacionom pristupu. Izračunata je na osnovu godišnjih statističkih rezultata Strukturno-poslovnog istraživanja za BiH (period t-2) te je ispravljena PRODCOM istraživanjem o industrijskoj

The income from sales (turnover) of products and services to third parties residing in the same country, that is, to residents of the BIH, is considered as sale on domestic market, while sales on non-domestic market is considered as sales to non-residents of the BIH. This is defined according to the criterion of the first destination of products or services and change of ownership (irrespective of whether the goods or services for which the invoice was issued actually crossed the border or not).

Calculation method

Indices of industrial turnover for the different levels of aggregation of KD BiH 2010 are calculated for indices on class, group levels and higher levels of aggregation by weighting with the share in value of turnover (sales) for defined industrial activities according to KD BiH 2010 in respect with each indicator. Indices for MIGs aggregates are calculated in the same way as well as indices for domestic and non-domestic market. The total turnover index is calculated by multiplying the indices of domestic and non-domestic market with their turnover shares (weights) in total turnover value, EU Regulation no, 2019/2152 and Implementing Act no, 2020/1197 for short-term business statistics (STBS) stipulates the use of base year 2021.

Main Industrial Groupings (MIGs) aggregates

To calculate the index for MIG aggregates (Commission Regulation (EC) no, 2019/2152 and Implementing Act no, 2020/1197 for short-term business statistics (STBS) to the definitions of Main Industrial Groupings (MIGs) new definitions are applied with aim of harmonization with the EU statistical standards. The calculation of the MIGs aggregates was done by grouping the groups or divisions of activities according to KD BiH 2010 within sections B and C (05,1 – 33,2) as follows, using alphabetic marks of abbreviations, in the following way:

- AI *Intermediate goods: the KD BIH 2010 divisions and groups: 07 – 09, 10,6, 10,9, 13,1 – 13,3, 16, 17, 20,1 – 20,3, 20,5, 20,6, 22 – 24, 25,5 – 25,7, 25,9, 26,1, 26,8, 27,1 – 27,4 and 27,9*
- AE *Energy: the KD BIH 2010 divisions: 05, 06 and 19*
- BB *Capital goods: the KD BIH 2010 divisions and groups: 25,1 – 25,4, 26,2, 26,3, 26,5, 26,6, 28, 29, 30,1 – 30,4, 32,5 and 33*
- CD *Consumer durables: the KD BIH 2010 divisions and groups: 26,4, 26,7, 27,5, 30,9, 31, 32,1 and 32,2*
- CN *Consumer non-durables: the KD BIH 2010 divisions and groups: 10,1 – 10,5, 10,7, 10,8, 11, 12, 13,9, 14, 15, 18, 20,4, 21, 32,3, 32,4 and 32,9,*

Weighting activities structure by KD BiH 2010

The structure of industrial activities (group level structure) for industrial turnover index of BiH has been calculated for the previous (base) year (t-1 period) on the basis of the value of turnover (sales) by prevailing activity principle. It was calculated on the basis of the annual statistical results of the Structural Business Survey (t-2 period) for the BIH and was further corrected by the results of the PRODCOM Survey on

proizvodnji (period t-2) i indeksima prometa industrije (period t-1). Za izračunavanje indeksa domaćega i stranog tržišta upotrebljava se struktura izračunata na osnovu PRODCOM istraživanja o industrijskoj proizvodnji, Struktura grana ažurira se na početku svake godine za obračunavanje indeksa tekuće godine.

Prezentacija serija indeksa

U skladu sa preporukama Eurostata, desezoniranje i kalendarsko prilagođavanje se vrši metodom TRAMO-SEATS u JDEMETRA+ okruženju na mjesečnoj seriji izvornih indeksa prometa industrije. Produžavanje serije indeksa dodavanjem novih mjesečnih indeksa za svaki idući mjesec može, zbog karakteristika primijenjene metode, prouzrokovati ispravke već objavljenih desezoniranih i kalendarski prilagođenih indeksa za nekoliko mjeseci unazad.

Desezonirani indeksi

Pod pojmom "desezonirani indeksi" podrazumijeva se da su podaci prilagođeni za sezonu i kalendarske dane. U skladu s Eurostatovim preporukama i Uredbom Vijeća (EZ-a) br. 2019/2152 te Implementirajućim akt br. 2020/1197 za kratkoročne poslovne statistike, podaci koji se upoređuju s podacima od prethodnog mjeseca (tzv. mjesečna uporedba prema Eurostatovoj terminologiji i praksi) prezentuju se u desezoniranom obliku indeksa prometa industrije ili iz njih izračunatih stopa rasta.

Kalendarski prilagođeni indeksi

Pod pojmom "kalendarski prilagođeni indeksi" podrazumijeva se da su podaci prilagođeni za kalendarske dane. U skladu s Eurostatovim preporukama i Uredbom Vijeća (EZ-a) br. 2019/2152 te Implementirajućim akt br. 2020/1197 za kratkoročne poslovne statistike, podaci koji se upoređuju s podacima iz istog mjeseca prethodne godine (tzv. godišnja uporedba prema Eurostatovoj terminologiji i praksi) prezentuju se u kalendarski prilagođenom obliku indeksa prometa industrije ili stopa rasta izračunanih iz tih indeksa.

Industrial Production (t-2 period) and by industrial turnover indices (t-1 period). For the calculation of domestic and non-domestic market indices, the structure calculated on the basis of the PRODCOM Survey on Industrial Production (t-2 period) is used. The group level structure is updated at the beginning of every year for the calculation of indices of a current year.

Indices series presentation

In accordance with the Eurostat's Recommendations, seasonal adjustment and working-day adjustment has been done by using the TRAMO-SEATS method in JDEMETRA+ environment on the monthly series of original industrial turnover indices. Extending indices series by adding new monthly indices for each month could, because of the applied method characteristics, cause subsequent corrections of already published seasonally and working-day adjusted indices for several months backwards.

Seasonally adjusted indices

The term seasonally adjusted indices indicate that data are adjusted for both seasonal and working-day effects. In line with the Eurostat's Recommendations and the Council Regulation No 2019/2152 and Implementing Act no, 2020/1197 for short-term business statistics (STBS), data that are compared to those of the previous month (the so-called monthly comparison – according to the Eurostat's terminology and practice) are presented in a seasonally adjusted form of industrial turnover indices or their growth rates.

Working-day adjusted indices

The term working day adjusted indices indicate that data are adjusted only for working-day effects. In line with the Eurostat's Recommendations and the Council Regulation No 2019/2152 and Implementing Act no, 2020/1197 for short-term business statistics (STBS), data that are compared to those of the same month of a previous year (the so-called annual comparison according to the Eurostat's terminology and practice) are presented in a working-day adjusted form of industrial turnover indices or its growth rates.

Publikuje Agencija za statistiku Bosne i Hercegovine, 71000 Sarajevo, Zelenih beretki 26
Published by the Agency for Statistics of the Bosnia and Herzegovina, 71000 Sarajevo, Zelenih beretki 26

Telefon/Phone: +387 (33) 911 911 | Telefaks/Telefax: +387 (33) 220 622
Elektronska pošta/E-mail: bhas@bhas.gov.ba | Internetska stranica/Web site: www.bhas.gov.ba

Odgovorne osobe/Responsible persons:

Velimir Jukić, pomoćnik direktorice za poslovne statistike
Velimir Jukić, Assistant Director of Business Statistics

Vesna Čužić, direktorica
Vesna Čužić, Director

Saopćenje priredili: Fahir Kanlić i Maria Ostojić
Prepared by: Fahir Kanlić and Maria Ostojić



 **Razmislite o očuvanju okoliša prije štampanja dokumenta.**
Please consider the environment before printing this document.