



# FIRST RELEASE



You are required to specify a data source when allowed in your product or application.

YEAR XV

SARAJEVO, 30/09/2024

NUMBER 2

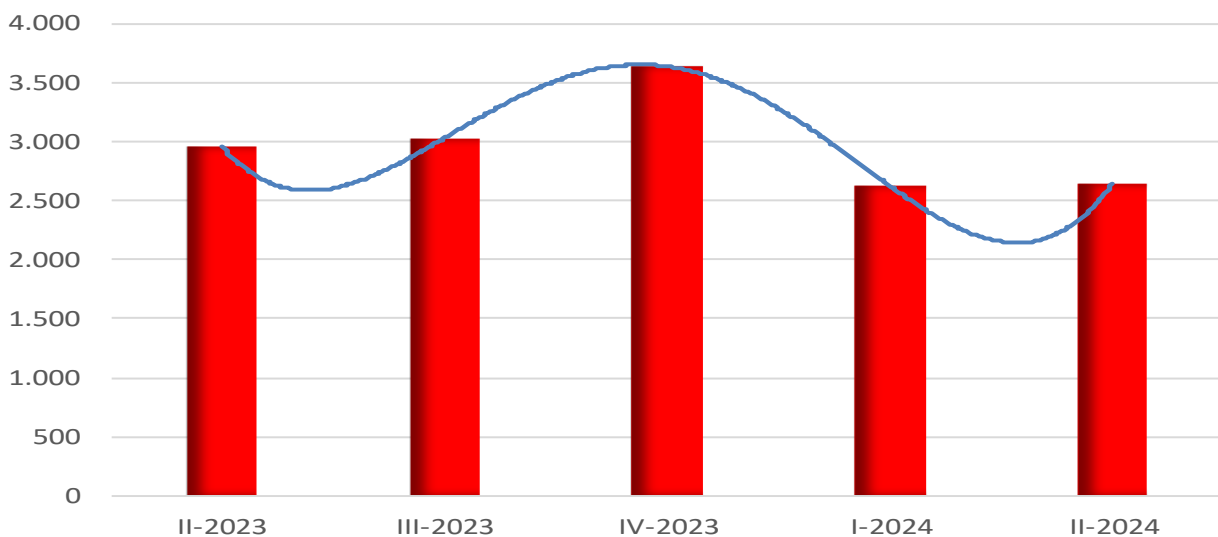
## TRANSPORT

### Railway transport, second quarter 2024.

In the second quarter of 2024, the number of passengers transported by railway increased by 5.9%, and the number of passenger-kilometres achieved increased by 8.2% compared to the same quarter of the previous year.

In the second quarter of 2024, the volume of goods transported by railway decreased by 10.4%, and the number of tonne-kilometres achieved was 10.9% lower compared to the same quarter of the previous year.

Graph 1: Transported goods in railway transport, 000t



**Table 1: Transport of goods**

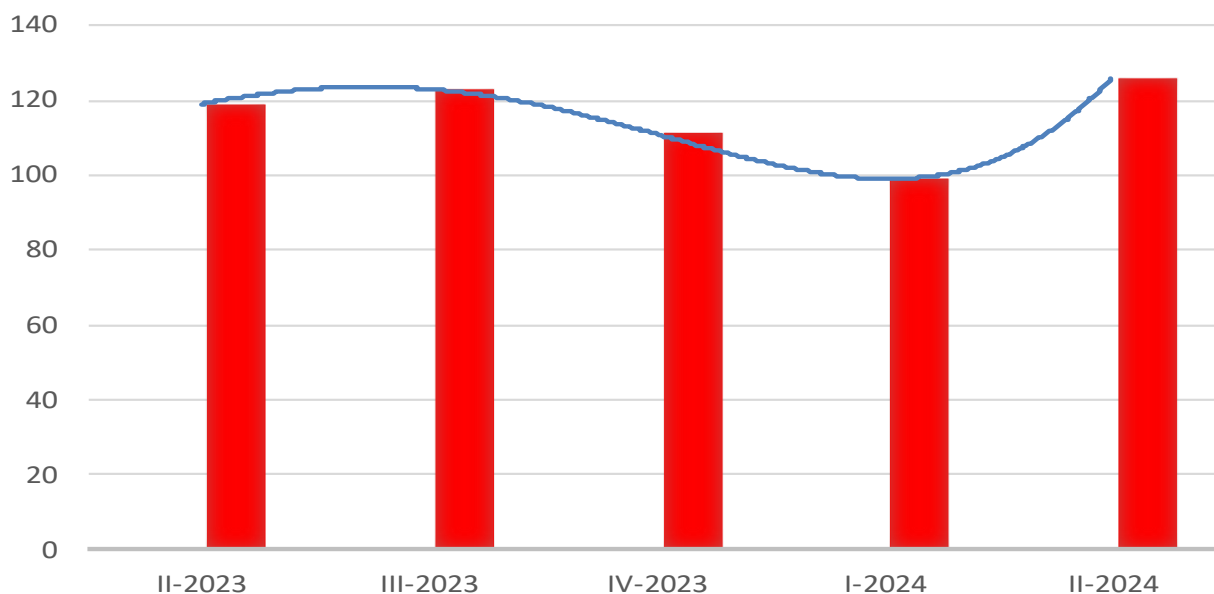
Volume of transport by transport indicators	II quarter 2023	III quarter 2023	IV quarter 2023	I quarter 2024	II quarter 2024
Tonnes of goods transported, 000t	2962	3036	3643	2627	2654
Tonne- kilometres, 000	322060	328291	379342	312058	286822

Indices by transport indicators	<u>III 2023</u> II 2023	<u>VI 2023</u> III 2023	<u>I 2024</u> IV 2023	<u>II 2024</u> I 2024	<u>II 2024</u> II 2023
Tonnes of goods transported	102,5	120,0	72,1	101,0	89,6
Tonne- kilometres	101,9	115,6	82,3	91,9	89,1

**Table 2: Transport of passengers**

Volume of transport by transport indicators	II quarter 2023	III quarter 2023	IV quarter 2023	I quarter 2024	II quarter 2024
Transported passengers, 000	119	123	111	99	126
Passenger- kilometres,000	9235	10459	7713	6985	9988

Indices by transport indicators	<u>III 2023</u> II 2023	<u>VI 2023</u> III 2023	<u>I 2024</u> IV 2023	<u>II 2024</u> I 2024	<u>II 2024</u> II 2023
Transported passengers	103,4	90,2	89,2	127,3	105,9
Passenger- kilometres	113,3	73,7	90,6	143,0	108,2

**Graph 2: Number of passengers carried in railway transport, 000**

## NOTES OF METHODOLOGY

Data on railway transport were obtained by processing monthly and quarterly statistical data from surveys conducted by the Statistical Offices at the level of entities. The reporting units for these surveys are enterprises and other business subjects engaged in domestic and international transport of passengers and goods.

## DEFINITIONS

Considered as transport is movement of passengers or cargo from one place (loading place) to another place (unloading place) and representing the operation of transport enterprises.

Domestic transport implies transport of passenger between places of loading and unloading within the borders of the country.

International transport implies transport of passengers between the place of loading in our country and the place of unloading abroad, or the other way round.

Transport of passengers include transported passengers into domestic and international transport.

Passenger kilometre is a unit of measure which refers to transport of one passenger at the distance of one kilometre.

Goods are any goods transported by railway transport means.

Goods transport is given in tons and ton kilometres, and it is the sum of all kilometres realized in domestic and international transport.

Tonne kilometre is a unit of measure which refers to transport of one tone of goods at the distance of one kilometre.

## STATISTICAL SIGNS

- No occurrence of event
- ... Data not available
- \* corrected data

## ABBREVIATIONS USED

km	kilometre
pkm	passenger kilometre
t	tonne
tkm	tonne- kilometre

Published by the Agency for Statistics of the Bosnia and Herzegovina, 71000 Sarajevo, Zelenih beretki 26

Phone: +387 (33) 911 911 | Telefax: +387 (33) 220 622  
E-mail: [bhas@bhas.gov.ba](mailto:bhas@bhas.gov.ba) | Web site: [www.bhas.gov.ba](http://www.bhas.gov.ba)

Responsible persons:

Alen Bajramović, Head of Department for Services Statistics  
Vesna Čužić, Director

Prepared by: Emina Mehanović



Please consider the environment before printing this document.